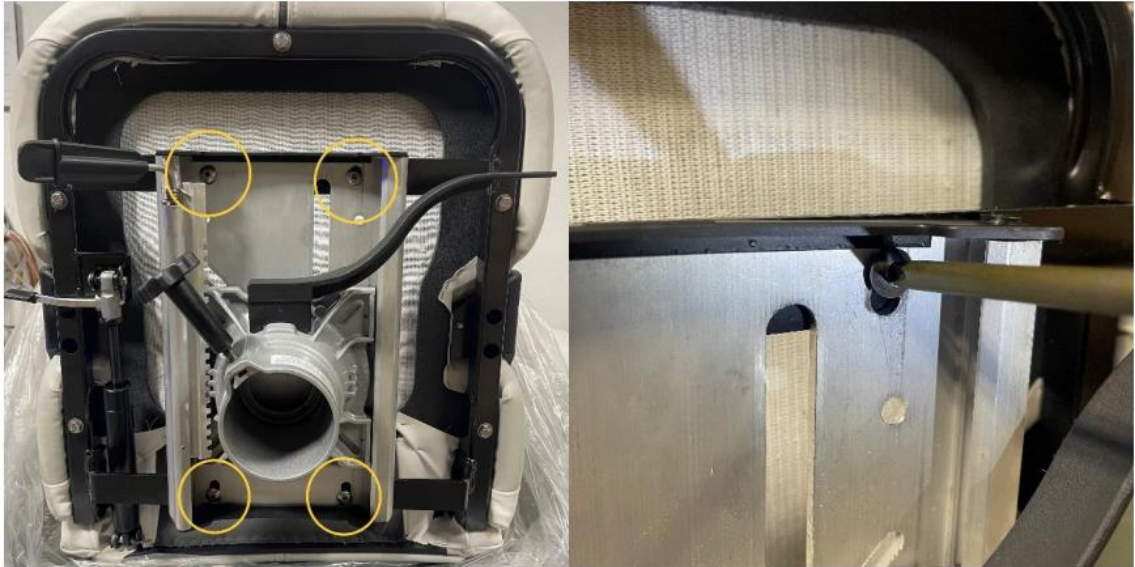


AVALON Marine® Infinity High Back Admiral and Midback Commander Helm Chairs Gas Spring Adjustment.

1. Lay the unit on its back to expose the bolts holding the slider and seat in place. Remove the (4) ¼"-20 X ¾ PH Truss MS SS Low Contour screws (017358) to detach the slider.



2. Once the slider has been detached, the gas spring should be easy to access for adjustment. **It is important** to have a protective rubber cover on the gas spring when adjusting. Failure to do so may cause debris to enter the gas spring and prevent it from working properly.

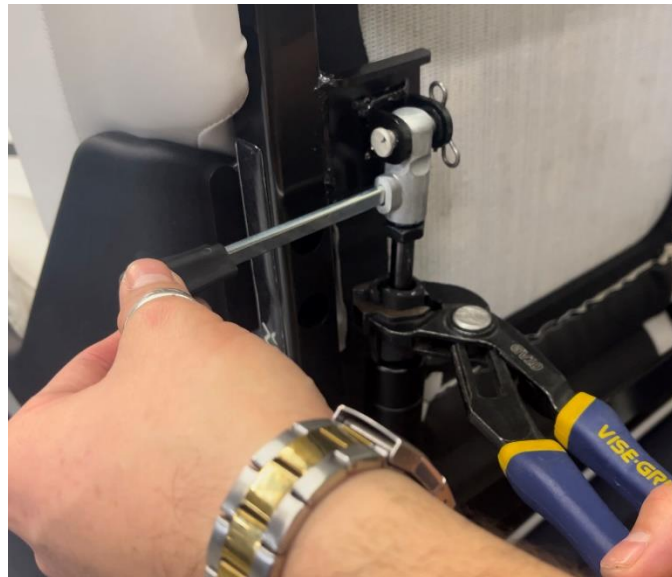


AVALON Marine® Infinity High Back Admiral and Midback Commander Helm Chairs Gas Spring Adjustment.

3. While you hold the gas spring in place with vice grips, loosen the nut that sits against the release head with a 17mm wrench as shown below.



4. By turning the cylinder, you can adjust the release lever as necessary until it is tight. Make sure to not overtighten it.



AVALON Marine® Infinity High Back Admiral and Midback Commander Helm Chairs Gas Spring Adjustment.

5. Apply [blue thread locker](#) on threads of the gas spring and tighten the nut against the release head while holding the gas spring in place with vice grips to prevent the lever from coming loose again.

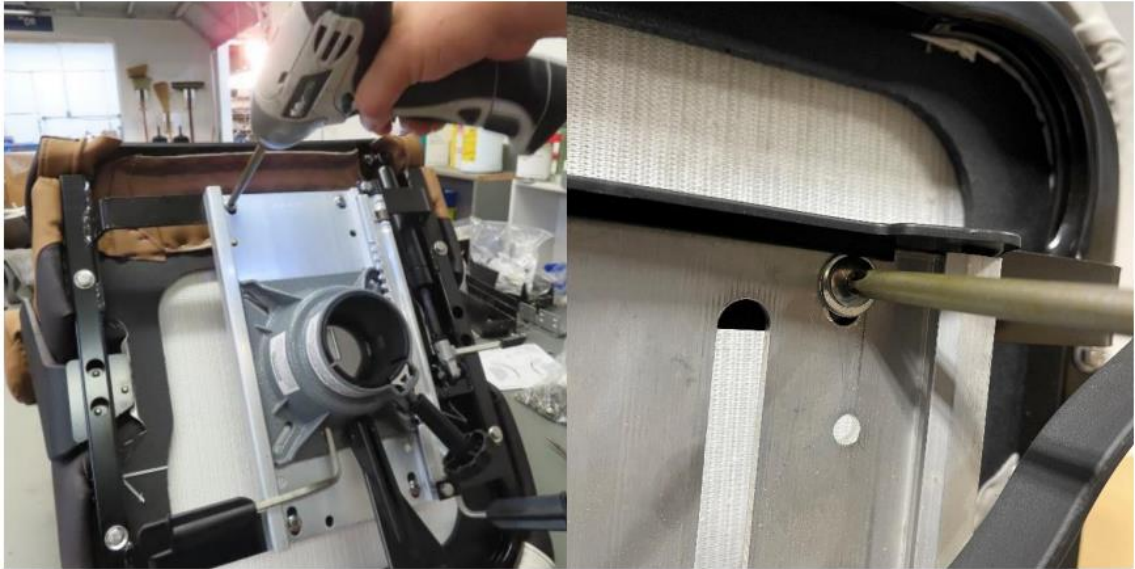


6. Test the chair to make sure the recline mechanism is working correctly before reinstallation of the slider.



AVALON Marine® Infinity High Back Admiral and Midback Commander Helm Chairs Gas Spring Adjustment.

7. Attach the slider back on the unit with the bolts and added washers as shown below.



8. Make sure all bolts and washers have been installed and all hardware is in place. Bottom of unit should look as shown below with standard seat and slider attached.

