

# Avalon

The Art of the Pontoon



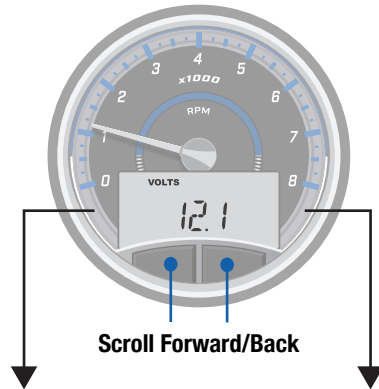
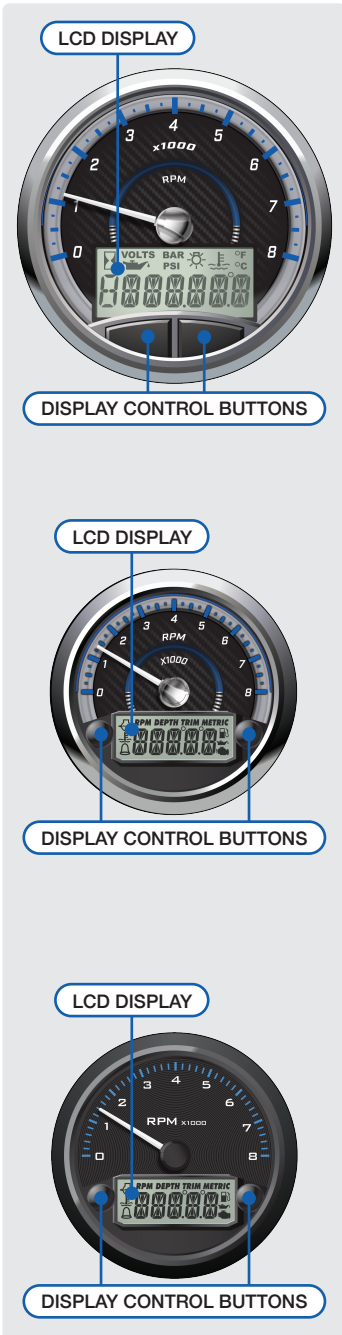
2023 GAUGES

---

USER GUIDE

3 & 5 INCH

# LCD DISPLAY SCREEN



## VOLTAGE



## TRIM LEVEL



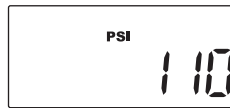
## COOLANT TEMP



## FUEL LEVEL



## OIL PRESSURE



## HEADING



## ENGINE HOURS



## DEPTH LEVEL

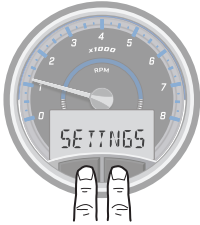


## SEA (LAKE) TEMP



# SETTINGS MAIN MENU

Press + Hold  
BOTH Buttons for  
Settings Main Menu



Scroll  
Forward/Back



Press +  
Hold to Select

## SYSTEM UNITS



## CALIBRATION MENU



## DIAGNOSTICS MENU



## ENGINE MENU



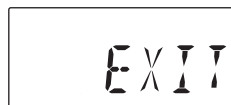
## CONFIGURATION MENU



## SOFTWARE VERSION



## EXIT MENU



Return to  
Main Screen



Scroll  
English  
/Metric

Press +  
Hold to  
Select

Software Version Number  
will flash and exit to  
Settings Main Menu

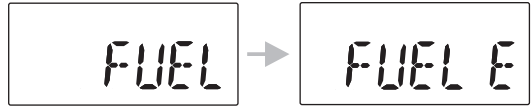
# CALIBRATION SETTINGS

FUEL and TRIM are Pre-Set to Factory Settings



Scroll Forward /Back

## FUEL CALIBRATION

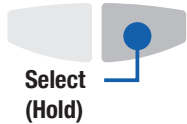


Calibrate (Up/Down)



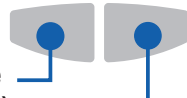
Press + Hold to Input and Scroll: EMPTY, HALF, FULL

## TRIM CALIBRATION



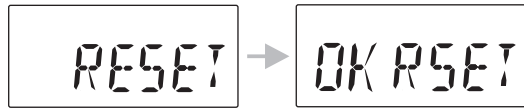
Select (Hold)

Calibrate (Up/Down)



Press + Hold to Input and Scroll: UP, DOWN

## FACTORY RESET



Press + Hold to Return FUEL and TRIM to Factory Settings

## EXIT MENU



Return to Settings Main Screen

# DIAGNOSTICS SETTINGS



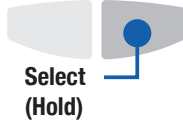
Scroll  
Forward  
/Back

CONTINUED  
NEXT PAGE

## VOLTAGE

VOLTS

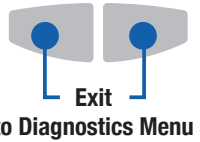
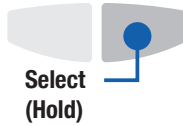
75.5



## FUEL LEVEL

FUEL

50



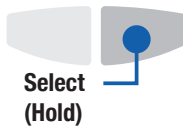
## COOLANT TEMP (NOT AVAILABLE ON THIS MODEL)

CTEMP

## TRIM LEVEL

TRIM

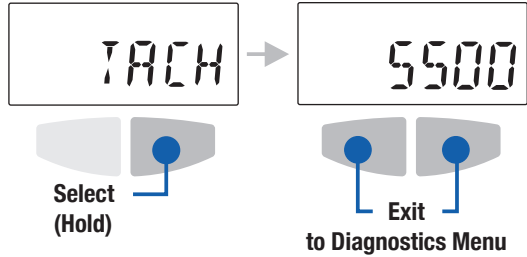
20



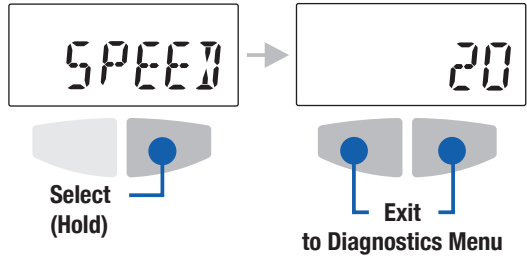
# DIAGNOSTICS SETTINGS (CONTINUED)

CONTINUED  
FROM PREVIOUS  
PAGE

## TACH (ENGINE RPM'S)



## SPEED



## CAN NETWORK CONNECTION



Displays Active or  
Inactive (NOCAN) message

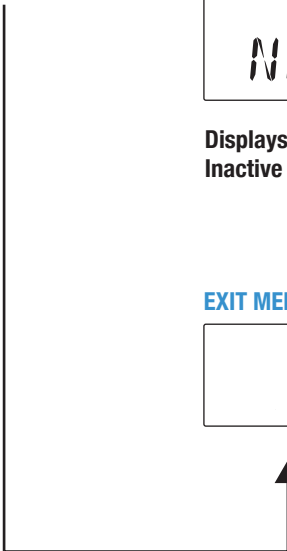
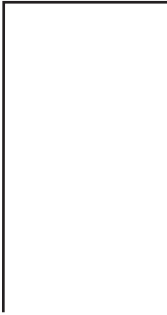
## EXIT MENU



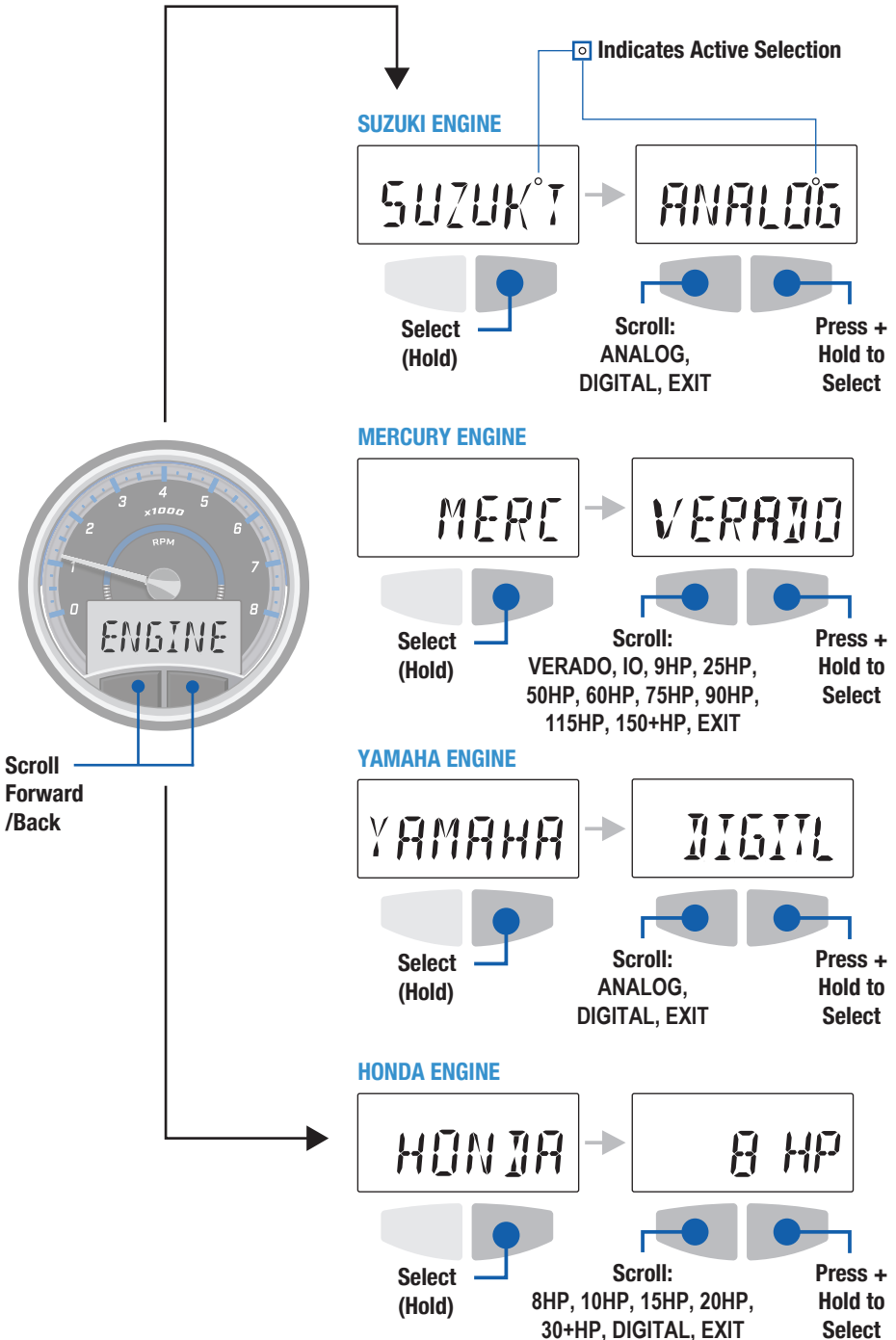
Return to  
Settings  
Main Screen



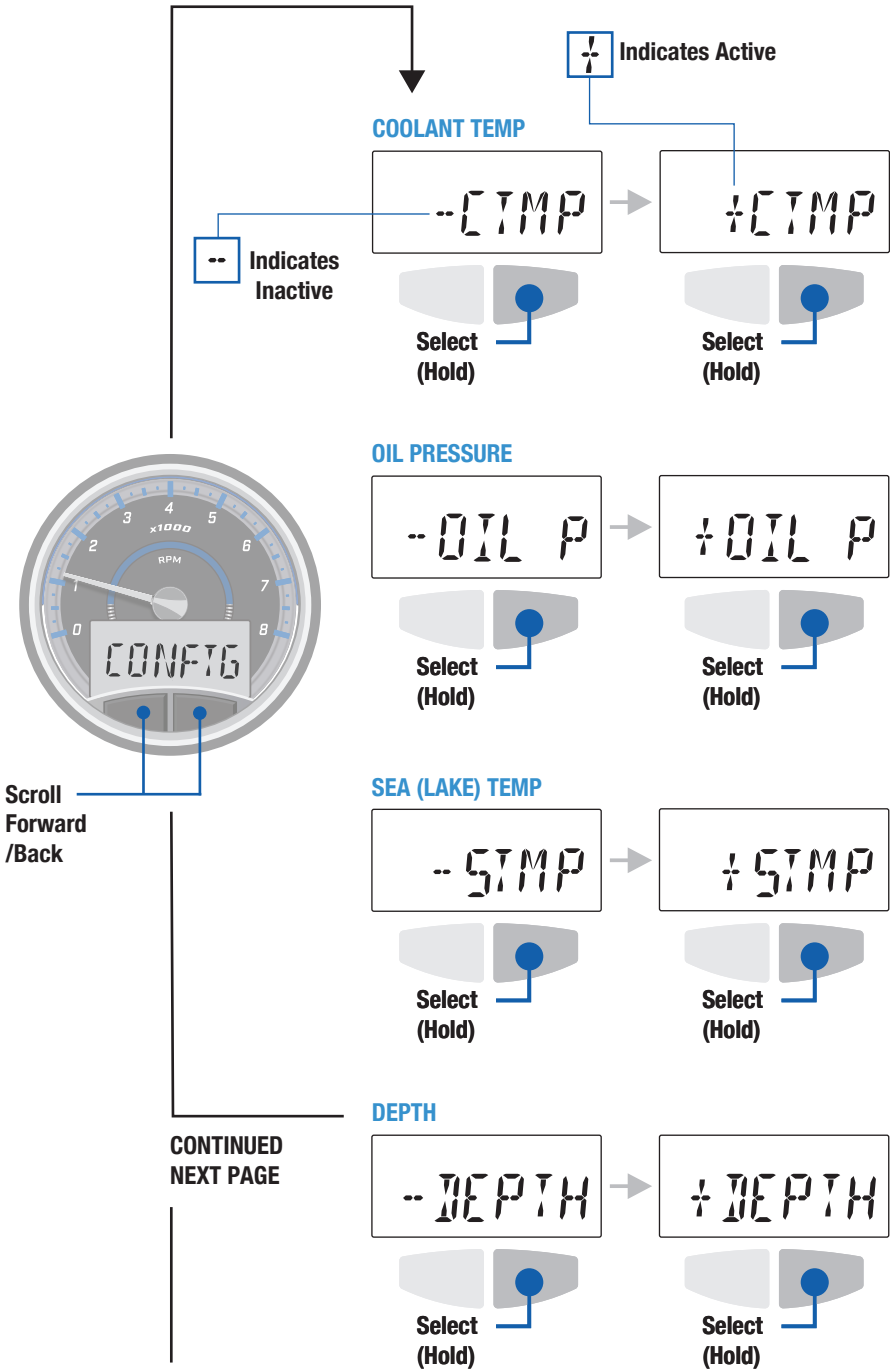
Scroll  
Forward  
/Back



# ENGINE SETTINGS



# CONFIGURATION SETTINGS

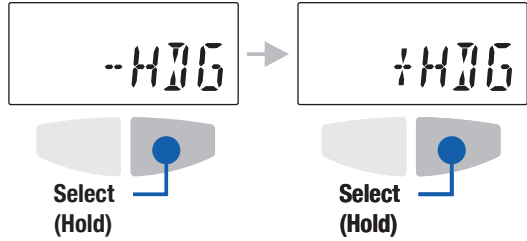




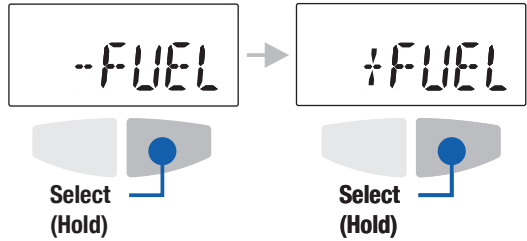
# CONFIGURATION SETTINGS (CONTINUED)

CONTINUED  
FROM PREVIOUS  
PAGE

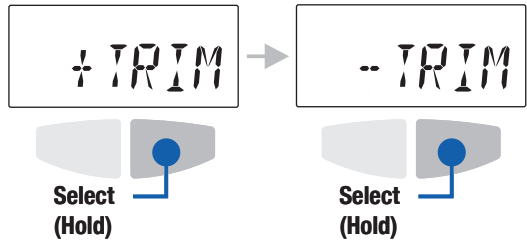
## HEADING



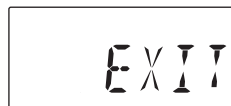
## FUEL



## TRIM



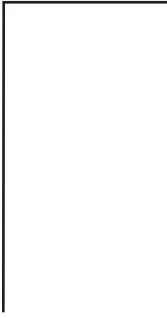
## EXIT MENU



Return to  
Settings  
Main Screen



Scroll  
Forward  
/Back



# TROUBLESHOOTING GUIDE

ISSUE	POSSIBLE CAUSE	SOLUTION
<b>MAIN GAUGE</b> Does Not Power Up	Ground is missing from gauge	Ensure <b>Battery Negative</b> is properly populated in <b>Pin 1</b> of main connector on the gauge
	Battery Power is missing from gauge	Ensure <b>12V</b> is present on <b>Pin 2</b> of main connector on the gauge when <b>Battery Switch</b> is turned on
	Ignition Power is missing from gauge	Ensure <b>12V</b> is present on <b>Pin 3</b> of main connector on the gauge when <b>Key Switch</b> is turned on
<b>SIMPLE GAUGE</b> Does Not Power Up	4 Pin Connector is not seated properly	Properly secure the <b>4 Pin Connector</b> to the <b>Simple Gauge</b> as well as the <b>Main Gauge</b>
	Ground is missing from gauge	Ensure <b>Pin 3</b> of the <b>4 Pin Connector</b> on the gauge has a good ground
	Battery Switch Power is missing from Viper 3, but Ignition is present	Ensure <b>12V</b> is present on <b>Pin 2</b> of main connector on the gauge when the <b>Main Gauge</b> is powered on
<b>TACH</b> is Not Reading Correctly	Incorrect Engine selected	Ensure <b>Proper Engine</b> is selected in <b>Settings Menu</b>
	Analog Tach signal is missing from main gauge	Ensure <b>Tach Signal</b> is present on <b>Pin 15</b> (5" Gauge) or <b>Pin 11</b> (3" Gauge) on the main gauge connector for <b>Analog Engines</b>
	Incorrect connection to Engine Data	Ensure proper connection to <b>Engine CAN</b> under helm and at the engine for <b>Digital Engines</b>
<b>TRIM</b> is Not Reading Correctly	Incorrect Engine selected	Ensure <b>Proper Engine</b> is selected in <b>Settings Menu</b>
	Incorrect Calibration	Reset all calibrations in <b>Settings Menu</b> to ensure incorrect calibration was not conducted on gauge
	Analog Trim Signal is missing from main gauge	Ensure <b>Tach Signal</b> is present on <b>Pin 11</b> (5" Gauge) or <b>Pin 9</b> (3" Gauge) on the main gauge connector for <b>Analog Engines</b>
	Honda Trim Signal is missing from main gauge	Ensure <b>Tach Signal</b> is present on <b>Pin 12</b> (5" Gauge) or <b>Pin 10</b> (3" Gauge) on the main gauge connector for <b>Honda Analog Engines</b>
	Incorrect connection to Engine Data	Ensure proper connection to <b>Engine CAN</b> under helm and at the engine for <b>Digital Engines</b>

# TROUBLESHOOTING GUIDE

ISSUE	POSSIBLE CAUSE	SOLUTION
<b>FUEL is Not Reading Correctly</b>	Incorrect Calibration	Reset all calibrations in <b>Settings Menu</b> to ensure incorrect calibration was not conducted on gauge
	Fuel Signal missing from main gauge	Ensure <b>Fuel Signal</b> is present on <b>Pin 8</b> on the main gauge connector
	Improper Resistance Values	Measure <b>Fuel Signal</b> input resistance value with respect to gauge ground. Fuel Signal should be between <b>22-240 ohms</b> into gauge
<b>No SPEED Present</b>	No power to GPS Module	Verify that there is <b>12VDC</b> and ground going to the <b>GPS Module</b>
	No CAN Connection	Check continuity of <b>CAN+</b> and <b>CAN-</b> connections from the <b>GPS Module</b> to the <b>Main Gauge</b>
	Missing Terminating Resistor/ Improper Resistance Values	Remove both connection at gauge and <b>GPS Module</b> and place ohm meter across <b>CAN High</b> and <b>CAN Low</b> . You should see between <b>60-120 ohms</b> . If open circuit then no termination is present
	No GPS Signal available	Ensure open visibility to sky away from structures

## SIMPLE GAUGE 4 PIN CONNECTOR

Pin #	Description	Notes
1	LIN	Communication Line
2	12V	+12 VDC
3	Ground	
4	Backlight	

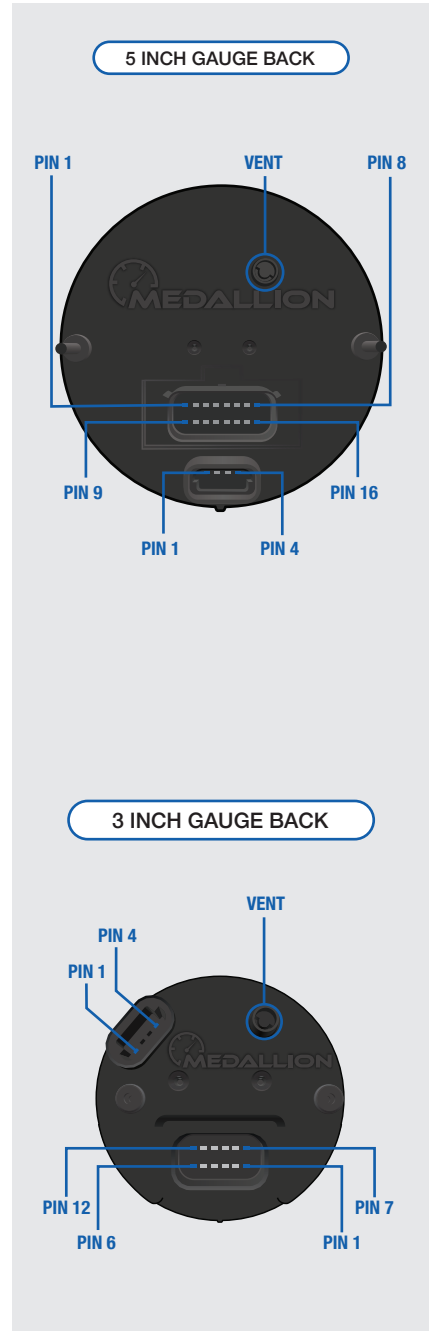
## GPS MODULE 8 PIN CONNECTOR

Pin #	Description	Notes
1	Ignition	+12 VDC
2	Ground	
3	CAN+	CAN+
4	CAN-	CAN-
5	NC	Not Used
6	NC	Not Used
7	NC	Not Used
8	NC	Not Used

# TROUBLESHOOTING GUIDE

## 5 INCH GAUGE 16 PIN CONNECTOR

Pin #	Description	Notes
1	Ground	
2	Battery	+12 VDC
3	Ignition	Switched 12 VDC
4	CAN 1 +	CAN+
5	CAN 1 -	CAN-
6	CAN Shield	Not Used
7	Backlight	0-12V
8	Analog 1	Fuel Level
9	Analog 2	Not Used
10	Analog 3	Not Used
11	Analog 4	Trim
12	Analog 5	Honda 5V Trim
13	Analog 6	Not Used
14	Analog 7	Not Used
15	Analog 8	Tach Input
16	Output 1	Not Used



## 3 INCH GAUGE 12 PIN CONNECTOR

Pin #	Description	Notes
1	Ground	
2	Battery	+12 VDC
3	Ignition	Switched 12 VDC
4	CAN 1 +	CAN+
5	CAN 1 -	CAN-
6	CAN Shield	Not Used
7	Backlight	0-12V
8	Analog 1	Fuel Level
9	Analog 2	Trim
10	Analog 3	Honda 5V Trim
11	Analog 4	Tach Input
12	Analog 5	Not Used

