



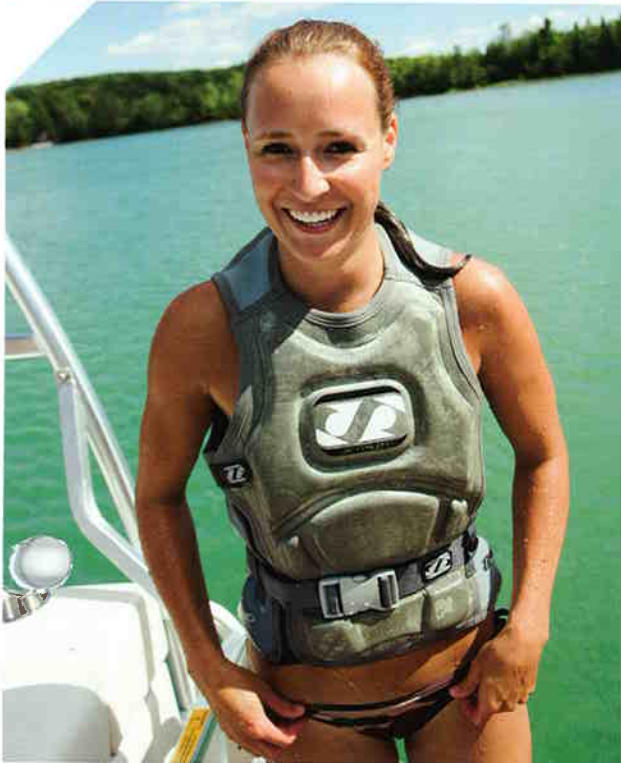
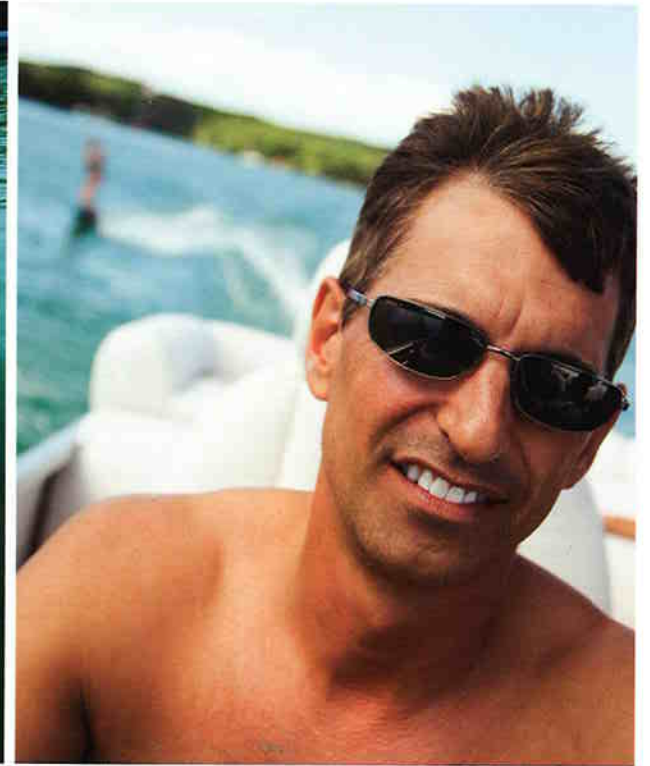
Memories come standard.

2007
Tahoe
PONTOONS



Make your own memories on a Tahoe Pontoon Boat.





Performance comes standard.

Tahoe's new performance options can turn your boat into a fast planing sport boat that's a blast to drive and perfect for pulling skiers, tubers and wakeboarders with ease.*

1. Add a center pontoon to add buoyancy and better weight capacities to your pontoon.
 2. Punch the throttle and unleash Tahoe's CTS/HPP advantage. CTS/HPP includes triple pontoons equipped with Tahoe's exclusive Extreme High performance lifting fin design.
 3. Add Power Assist Steering to give your boat even better handling and turning capability.
 4. Take it to the next level by equipping your craft with the Tahoe 5 x 7 High Performance Package. For O/B models it includes CTS/HPP, a 27" center pontoon, 42 gallon fuel tank in the center tube (exchange for standard tank), Aluminum underskin, an upgrade to Sea Star hydraulic steering, electric power assist steering, and a ski tow bar. Or choose any of the options individually for your own custom setup. I/O models are already equipped with a center pontoon, the 42 gallon center tank, Aluminum underskin, and the Sea Star hydraulic steering, so just add the high performance fins, upgrade to a 27" diameter center pontoon, and add power steering to go 5 x 7.
 5. Go I/O if you want a powerful smooth and impressive high performance setup. Add through hull exhaust equipped with silent choice so you can growl across the water or keep it quiet when just cruising. Power assist steering is recommended for V8 powered I/O models.
- Performance packages are available factory installed only.
 - High performance pontoons work best on 20' and larger models using 90hp and above.
 - Hydraulic steering is required for 115hp and above.

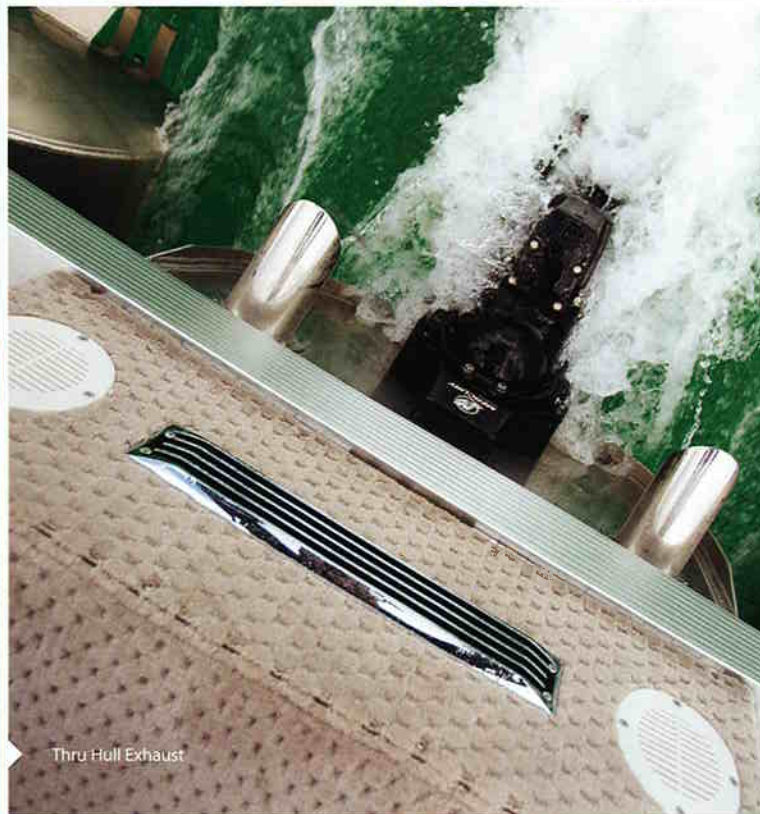
*When equipped with adequate HP.



Tahoe 5 x 7 High Performance Package



Power Assist Steering



Thru-Hull Exhaust

CTS Specs

(Center Tube System)

	Deck Length	Pontoon Length	Pontoon Diameter	Deck Width	Weight w/ Furniture	Max. Weight Capacity	Max. HP 25" Dia.	Max HP 23" Dia.	Max Engine w/ 5 x 7	Max No. Persons	Max Person Weight	
Classic Series	Grand Tahoe CTS	29'	28'	25"	8.5'	2902	3600	275	N/A	300	22	3020
		27'	26'	25"	8.5'	2627	3198	250	N/A	275	20	2720
		25'	24'	25"	8.5'	2374	2960	225	N/A	250	18	2440
	Sierra CTS	24'	24'	25"	8.5'	2374	2960	225	N/A	250	18	2540
		22'	22'	25"	8.5'	2235	2723	175	N/A	200	16	2340
		20'	20'	25"	8.5'	2070	2485	150	N/A	175	14	2140
	Aspen CTS	24'	24'	25"	8.5'	2374	2960	225	N/A	250	18	2540
		22'	22'	25"	8.5'	2235	2723	175	N/A	200	16	2340
		20'	20'	25"	8.5'	2070	2485	150	N/A	175	14	2140
	Sierra RC CTS	24'	24'	25"	8.5'	2472	2960	225	N/A	250	18	2540
		22'	22'	25"	8.5'	2328	2723	175	N/A	200	16	2340
	Aspen DC CTS	24'	24'	25"	8.5'	2413	2960	225	N/A	250	18	2540
	22'	22'	25"	8.5'	2272	2723	175	N/A	200	16	2340	
Classic Rear Fish CTS	24'	24'	25"	8.5'	2374	2960	225	N/A	250	18	2540	
	22'	22'	25"	8.5'	2235	2723	175	N/A	200	16	2340	
Classic RCRF CTS	24'	24'	25"	8.5'	2472	2960	225	N/A	250	18	2540	
SE Series	Vista CTS	24'	24'	23"	8'	2143	2850	200	150	225	16	2340
		22'	22'	23"	8'	2017	2650	175	125	200	14	2180
		20'	20'	23"	8'	1859	2305	150	115	175	11	1905
		18'	18'	23"	8'	1691	2150	135	90	150	10	1780
	Blue Ridge CTS	24'	24'	23"	8'	2143	2850	200	150	225	16	2340
		22'	22'	23"	8'	2017	2650	175	125	200	14	2180
		20'	20'	23"	8'	1859	2305	150	115	175	11	1905
		18'	18'	23"	8'	1691	2150	135	90	150	10	1780
	Vista RC CTS	24'	24'	25"	8.5'	2235	2960	225	N/A	250	18	2540
		22'	22'	25"	8.5'	2103	2723	175	N/A	200	16	2340
	Blue Ridge DC CTS	24'	24'	25"	8.5'	2180	2960	225	N/A	250	18	2540
		22'	22'	25"	8.5'	2051	2723	175	N/A	200	16	2340
	SE-V Rear Fish CTS	24'	24'	23"	8'	2143	2850	200	150	225	16	2340
		22'	22'	23"	8'	2017	2650	175	125	200	14	2180
	SE-V RCRF CTS	24'	24'	25"	8.5'	2235	2960	225	N/A	250	18	2540
	SE-B Fish CTS	24'	24'	23"	8'	2143	2850	200	150	225	16	2340
		22'	22'	23"	8'	2017	2650	175	125	200	14	2180
		20'	20'	23"	8'	1859	2305	150	115	175	11	1905
		18'	18'	23"	8'	1691	2150	135	90	150	10	1780
	Cascade CTS	24'	24'	23"	8'	2050	2850	150	135	150	16	2340
		22'	22'	23"	8'	1930	2650	135	115	135	14	2180
		20'	20'	23"	8'	1780	2305	115	100	115	11	1905
		18'	18'	23"	8'	1620	2150	100	90	100	10	1780
		16'	16'	23"	8'	1292	1880	75	60	75	9	1580
SE-C Fish CTS	24'	24'	23"	8'	2050	2850	150	135	150	16	2340	
	22'	22'	23"	8'	1930	2650	135	115	135	14	2180	
	20'	20'	23"	8'	1780	2305	115	100	115	11	1905	
	18'	18'	23"	8'	1620	2150	100	90	100	10	1780	
Sport CTS	16'	16'	22"	7'	1136	1775	N/A	50	N/A	8	1480	
	14'	14'	22"	7'	1112	1500	N/A	40	N/A	6	1260	

Quality comes standard.

A Worlds Strongest Nose Cone

The absolute strongest in the industry. The one-piece construction makes it virtually impossible to break off a splash fin. The double wrapped leading edge provides maximum impact protection. The entire cone is tapered and inserted in the tube for even more strength.



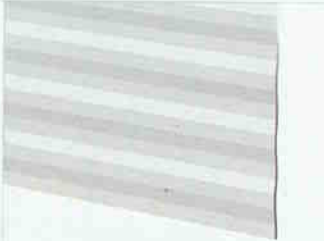
B Industry's Strongest Double Bolted Motor Pod

.190" thickness with integrated splash fins. 2" thick aluminum sheathed transom is fully welded. The entire pod is double bolted and supported by heavy-duty "C" channels.



C Quiet, Extra Thick Wall Skins

Heavy-duty wall skins feature the Silencer Strip™ on all edges for the quietest walls. Wall skins are strip locked into the horizontal and vertical supports, then braced. The result is the most durable, quiet wall available!



D Superior Quality Pontoon Tube

.080" thickness H5052 aircraft aluminum alloy. Multi-baffled near each weld for maximum strength and air lock. Hand-welded to rigid standards. Neatest welds in the industry. Available in optional 27" diameter.



E Heavy-Duty .190" Anodized Extruded 4" Rub Rail with Dock Bumper

All anodized for lasting beauty. The bumper and heavy construction provide outstanding protection.



Classic - Series Construction



Tahoe
AMERICA'S BEST
PONTON WARRANTY

WARRANTY DURATION

Lifetime Warranty*
5 Year Warranty*
1 Year Warranty*

ITEMS COVERED

PTP Flooring, Seat Frames, Transom, Pontoon Structure, Crossbeams
Bimini Top, Mooring Cover, Carpet, Seat Vinyl
All other components manufactured by Tahoe

* All warranties are subject to the specific terms, conditions, and limitations set forth in the warranty agreement. See owners manual for details.

F Heavy-Duty 10' Bimini Top

Find shade from the hot summer sun with a Deluxe Bimini Top. Includes a 5 year limited warranty.

G Finger Guards

Keep little fingers (and big fingers) out of danger.

Full Riser

All pontoons are connected to the frame with full risers inside and outside. Full risers provide continuous strength along the pontoon.



I Reflective Striping

Improves your visibility on the water for enhanced safety.

J Bow Eye

Reinforced stainless bow eye provides excellent strength for haul-out

K One Piece Captain's Helmstand

Take command of your vessel from behind a beautiful one piece helmstand.

L 4 Stainless Steel Cleats & Lifting Eye Assemblies

Durable hardware with class.

M Wall Spacers

Wall rails are raised to allow drainage while cleaning and ventilation while stored.

N Exclusive Side Keel Protection

Special welded keels protect against damage from impact.

O Stainless Steel Corner Castings

Beautiful and durable protection from expensive damage.

P 28oz. Diamond Textured Carpet

Plush carpet as durable as our pontoons. Includes a 5 year limited warranty.

Q Custom Colors

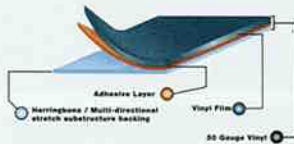
Tahoe models are available in many different color choices (Color options page 32).

R Engine Compartment Light

Shed a little light on the situation with this convenient feature.

S Exclusive Matrix 50 Vinyl

- 50 gauge vinyl with a 24% substructure is stronger, less likely to tear and will not puncture like traditional expanded.
- New Herringbone multi-directional stretch backing promotes quicker recovery.
- Greater stitch strength.



T GPS

New Garmin® Color In-Dash Combination GPS, Fishfinder and GPS Speedometer with map chip capability.



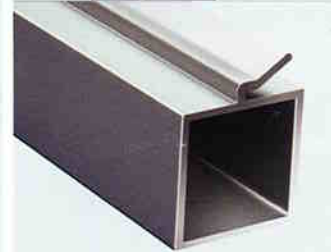
U Floor Matting Under Seat to Keep Gear Dry

Spending the day swimming and wakeboarding can track a lot of water on to the deck. Floor matting helps keep your stuff dry.



V Aluminum Seat Frames & Kick Panels

Clearly superior. Lifetime warranty. Aluminum seat frames won't rot like wood. Won't crack or hold water like plastic. Extra large compartments provide the largest under seat storage.



W Secure Grip™ Wall Railing

The best in the business! Ribbed 1.25" across and .090" thickness horizontal and vertical rails. Tahoe features more vertical support rails than any other. All rails are completely anodized for lasting beauty and corrosion prevention.



X The Best Crossbeam & Deck Construction

Tahoe pontoon boats feature the latest in heavy-duty hull construction. 3" high, extreme thickness "C" channel crossbeams are bolted to the full riser with heavy-duty stainless bolts, nuts, and washers. Then 3/4", pressure injected, lifetime guaranteed flooring is bolted to the crossbeams using superior grade stainless steel bolts secured permanently with stainless nylock lock nuts and washers.



Yamaha's T60 Four Stroke features a high gear ratio and unique Dual Thrust propeller designed to deliver up to twice the thrust of comparable two stroke outboards. Ask your dealer about Yamaha packages with your boat.



Tahoe
PONTONS



Grand Tahoe Classic

Grand Elite 29'

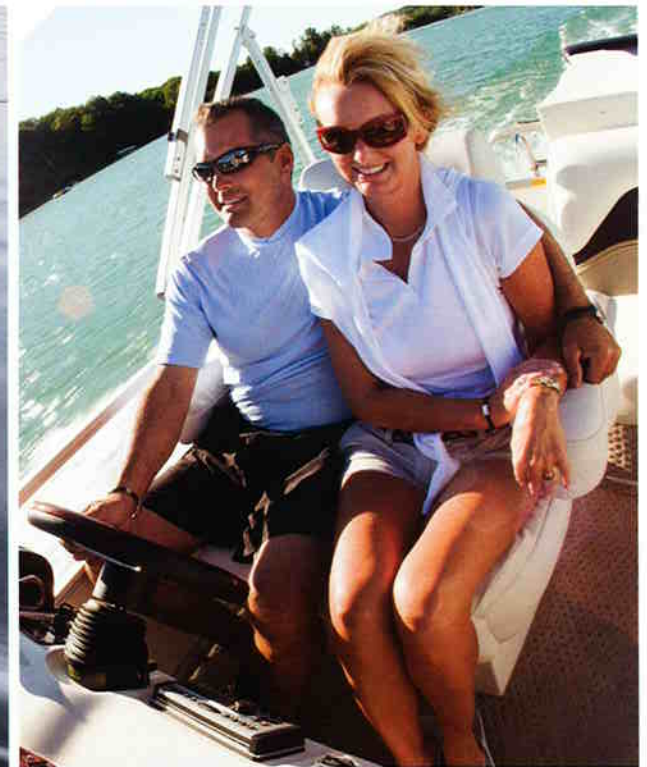
Let's start at the top.

You gravitate to the best. In fact, you insist on it. Because you've worked hard to achieve the finer things in life and you deserve them. Well, look no further than the Grand Tahoe as you consider your pontoon boat. It's the most regal, richly-appointed exquisite model of any fleet.





Grand Elite 27'



Grand Tahoe RE 25'



Specifications	25 ft.	27 ft.	29 ft.
Pontoon Length	24 ft.	26 ft.	28 ft.
Pontoon Diameter	25 in.	25 in.	25 in.
Deck Length	25 ft.	27 ft.	29 ft.
Deck Width	8.5 ft.	8.5 ft.	8.5 ft.
Weight with Furniture	2,174 lbs.	2,427 lbs.	3,300 lbs.
Max. Wt. Capacity	2,660 lbs.	2,898 lbs.	3,300 lbs.
Max. No. of Persons	16 2,140 lbs.	18 2,420 lbs.	20 2,720 lbs.
Max. Engine H.P.	135 H.P.	150 H.P.	175 H.P.



Sierra Classic

Sierra RE 24'

Beauty and the best.

You see the beauty with one glimpse of Sierra Classic's fluid design and impeccable furnishings. Yet all this refinement sits atop a bionic watercraft that is truly at the top-of-the-food-chain when it comes to pontoon construction. We build it beautifully strong so you can enjoy storybook summers for years to come.





Sierra Elite 22'



Sierra RE 20'



Specifications	20 ft.	22 ft.	24 ft.
Pontoon Length	20 ft.	22 ft.	24 ft.
Pontoon Diameter	25 in.	25 in.	25 in.
Deck Length	20 ft.	22 ft.	24 ft.
Deck Width	8 1/2 ft.	8 1/2 ft.	8 1/2 ft.
Weight with Furniture	1,870 lbs.	2,035 lbs.	2,174 lbs.
Max. Wt. Capacity	2,185 lbs.	2,423 lbs.	2,660 lbs.
Max. No. of Persons	12 1,840 lbs.	14 2,040 lbs.	16 2,240 lbs.
Max. Engine H.P.	100 H.P.	125 H.P.	135 H.P.



Aspen Classic

Aspen RE 20'

A sporty attitude, just like yours.

On one hand, the Aspen Classic is a luxury liner. It has Tahoe's finest construction, materials, furnishings and features. On the other hand, it's a playground. A party platform for watersports and amazing days in the sun. You and your family will love the plush layout and oversized bow deck. And if the Aspen gives you any attitude, all the better.





Aspen RE 20'



Aspen RE 24'



Aspen Elite 22'



Specifications	20 ft.	22 ft.	24 ft.
Pontoon Length	20 ft.	22 ft.	24 ft.
Pontoon Diameter	25 in.	25 in.	25 in.
Deck Length	20 ft.	22 ft.	24 ft.
Deck Width	8.5 ft.	8.5 ft.	8.5 ft.
Weight with Furniture	1,870 lbs.	2,035 lbs.	2,174 lbs.
Max. Wt. Capacity	2,185 lbs.	2,423 lbs.	2,660 lbs.
Max. No. of Persons	12 / 1,840 lbs.	14 / 2,040 lbs.	16 / 2,240 lbs.
Max. Engine H.P.	100 H.P.	125 H.P.	135 H.P.



Sierra RC

Sierra RC Elite 24'



Sierra RC Elite 22'

It just keeps getting better.

How do you take the amazing Sierra Classic and make it even better? For starters, you add two unbelievable reclining chairs in front. They provide comfort and style that's off the charts. Then you throw in a sleek bistro table for entertaining. Finally, drop the radial bow fence to reveal a picture-perfect view of the lake. Does it get any better?

Specifications	22 ft.	24 ft.
Pontoon Length	22 ft.	24 ft.
Pontoon Diameter	25 in.	25 in.
Deck Length	22 ft.	24 ft.
Deck Width	8.5 ft.	8.5 ft.
Weight with Furniture	2,128 lbs.	2,272 lbs.
Max. Wt. Capacity	2,423 lbs.	2,660 lbs.
Max. No. of Persons	14	16
Max. Engine H.P.	125 H.P.	135 H.P.





Tahoe
PONTONS



Aspen Elite DC 22'

Aspen Elite DC 24'

Aspen DC

Specifications

22 ft.

24 ft.

Pontoon Length	22 ft.	24 ft.
Pontoon Diameter	25 in.	25 in.
Deck Length	22 ft.	24 ft.
Deck Width	8.5 ft.	8.5 ft.
Weight with Furniture	2,072 lbs.	2,213 lbs.
Max. Wt. Capacity	2,423 lbs.	2,660 lbs.
Max. No. of Persons	14	16
Max. Engine H.P.	125 H.P.	135 H.P.

Friends, please take your seats.

Seating. It's what the Aspen DC is all about. With the addition of two luxury low back non-reclining captain's chairs at the bow, this pontoon boasts more seating options than most living rooms. Naturally, every perch is designed for soothing comfort. And if you're an angler, you'll love sitting up front to reel in a boatload of memories.

Tahoe
PONTONS



Classic RF 22'

Classic RF

It's easy to be all things to all people.

Cruising or casting, what'll it be? How about both! Inside, you'll find dual fishing chairs in back that swivel with rod holders and storage nearby. There's also a livewell, rod locker, tackle trays and a fishfinder with GPS. Up front it's all about relaxation with unbelievable seating for the whole gang and great storage for all your gear.

Specification

Pontoon Length
Pontoon Diameter
Deck Length
Deck Width
Weight with Furnit
Max. Wt. Capacity
Max. No. of Persons
Max. Engine H.P.





Classic RCRF 24'

Classic RCRF

Musical chairs.

Imagine yourself with a dozen of your closest friends. The lake is like glass as you pop your favorite CD into the stereo, grab a drink from the cooler and kick back in the best seat on board. Is it one of the front recliners? Perhaps the L-lounge. Or fishing from one of the stern chairs. Either way, they're all the best places to be on a summer day.

Specifications

24 ft.

Pontoon Length	24 ft.
Pontoon Diameter	25 in.
Deck Length	24 ft.
Deck Width	8.5 ft.
Weight with Furniture	2,272 lbs.
Max. Wt. Capacity	2,660 lbs.
Max. No. of Persons	16 / 2,240 lbs.
Max. Engine H.P.	135 H.P.

Tahoe
PONTONS



Vista

Vista Elite 24'

It defines being "carefree".

The dictionary defines "vista" as a distant view. When you spend a day on a Tahoe Vista, it's where your cares go: way off into the distance. And all that remains is total peace. When you consider how affordable this radius-styled boat is, your cares dissolve even further. So relax. Unwind. And enjoy the Vista.





Vista RE 22'



Vista PS 20'

Vista FRB 18'



Specifications	18 ft.	20 ft.	22 ft.	24 ft.
Pontoon Length	18 ft.	20 ft.	22 ft.	24 ft.
Pontoon Diameter	23 in.	23 in.	23 in.	23 in.
Deck Length	18 ft.	20 ft.	22 ft.	24 ft.
Deck Width	8 ft.	8 ft.	8 ft.	8 ft.
Weight with Furniture	1,491 lbs.	1,659 lbs.	1,817 lbs.	1,943 lbs.
Max. Wt. Capacity	1,850 lbs.	2,005 lbs.	2,350 lbs.	2,550 lbs.
Max. No. of Persons	8 1,480 lbs.	9 1,605 lbs.	12 1,880 lbs.	14 2,040 lbs.
Max. Engine H.P.	75 H.P.	90 H.P.	100 H.P.	115 H.P.

Tahoe
PONTONS



Blue Ridge SE

Blue Ridge RE 20'

You're about to read a best-seller.

Blue Ridge is our top-selling model. It's easy to understand why. In addition to stylish Tahoe construction, you get a beautiful helmstand, platinum gauges, CD stereo, lounge arms, a luxury captain's chair with slider, dock lights, aluminum seat frames, a ladder, bimini top, mooring cover and much more. And all at a happy-ending price.





Blue Ridge Elite 24'



Blue Ridge PS 22'

Blue Ridge FRB 18'



Specifications	18 ft.	20 ft.	22 ft.	24 ft.
Pontoon Length	18 ft.	20 ft.	22 ft.	24 ft.
Pontoon Diameter	23 in.	23 in.	23 in.	23 in.
Deck Length	18 ft.	20 ft.	22 ft.	24 ft.
Deck Width	8 ft.	8 ft.	8 ft.	8 ft.
Weight with Furniture	1,491 lbs.	1,659 lbs.	1,817 lbs.	1,943 lbs.
Max. Wt. Capacity	1,850 lbs.	2,005 lbs.	2,350 lbs.	2,550 lbs.
Max. No. of Persons	8 1,480 lbs.	9 1,605 lbs.	12 1,880 lbs.	14 2,040 lbs.
Max. Engine H.P.	75 H.P.	90 H.P.	100 H.P.	115 H.P.



Vista RC

Vista Elite RC 24

Vista RE RC 22'

Tip one back.

We're talking about the front reclining chairs, naturally. The photographs certainly show you how beautifully they're made. But to truly appreciate their comfort, go to your nearest Tahoe dealer and have a seat. Tip one back. You'll love them as much as you'll love the rest of the Vista RC.

Specifications	22 ft.	24 ft.
Pontoon Length	22 ft.	24 ft.
Pontoon Diameter	25 in.	25 in.
Deck Length	22 ft.	24 ft.
Deck Width	8.5 ft.	8.5 ft.
Weight with Furniture	1,903 lbs.	2,035 lbs.
Max. Wt. Capacity	2,423 lbs.	2,660 lbs.
Max. No. of Persons	14 2,040 lbs.	16 2,240 lbs.
Max. Engine H.P.	125 H.P.	135 H.P.

Optional Twin Bimini Tops



Blue Ridge Elite DC 24'

Blue Ridge Elite DC 22'



Blue Ridge DC

An instant hit.

Ever since we introduced this version of the popular Blue Ridge, people have been singing its praises. The plush front seats are as stylish as they are comfortable. And because they swivel 360°, they're ideal for fishing off the bow or for spinning around to socialize with friends. See one today and you'll be a Blue Ridge DC fan too.

Specifications

	22 ft.	24 ft.
Pontoon Length	22 ft.	24 ft.
Pontoon Diameter	25 in.	25 in.
Deck Length	22 ft.	24 ft.
Deck Width	8.5 ft.	8.5 ft.
Weight with Furniture	1,851 lbs.	1,980 lbs.
Max. Wt. Capacity	2,423 lbs.	2,660 lbs.
Max. No. of Persons	14 / 2,040 lbs.	16 / 2,240 lbs.
Max. Engine H.P.	125 H.P.	135 H.P.



SE-V RF

SE-V RF 22'

Fishing in Comfort.

Tahoe SE-V Models are Vista inspired modern style fishing pontoons with two rear fishing stations, full seating, lounge arms, CD player, Garmin® fishfinder, ladder built in docklights and mooring cover.



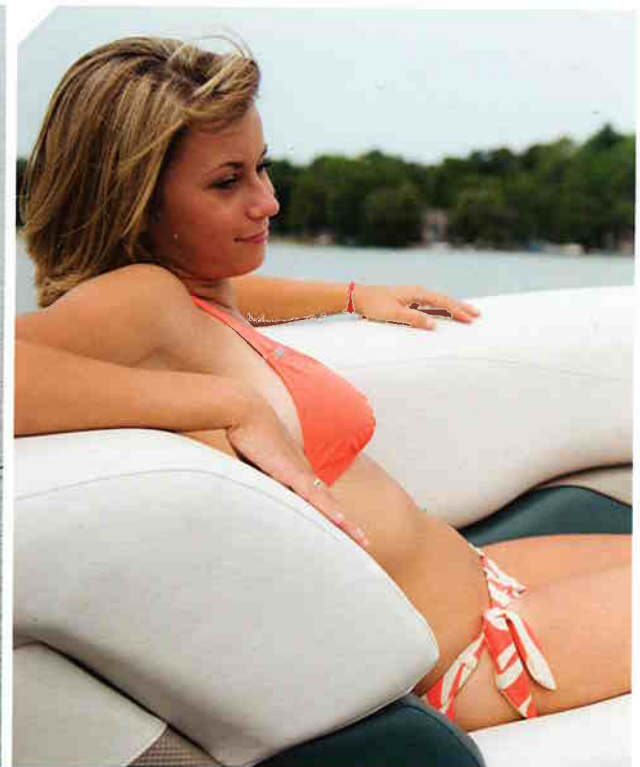
Specifications

	22 ft.	24 ft.
Pontoon Length	22 ft.	24 ft.
Pontoon Diameter	23 in.	23 in.
Deck Length	22 ft.	24 ft.
Deck Width	8 ft.	8 ft.
Weight with Furniture	1,817 lbs.	1,943 lbs.
Max. Wt. Capacity	2,350 lbs.	2,550 lbs.
Max. No. of Persons	12 / 1,880 lbs.	14 / 2,040 lbs.
Max. Engine H.P.	100 H.P.	115 H.P.



SE-V RCRF

SE-V RCRF 24'

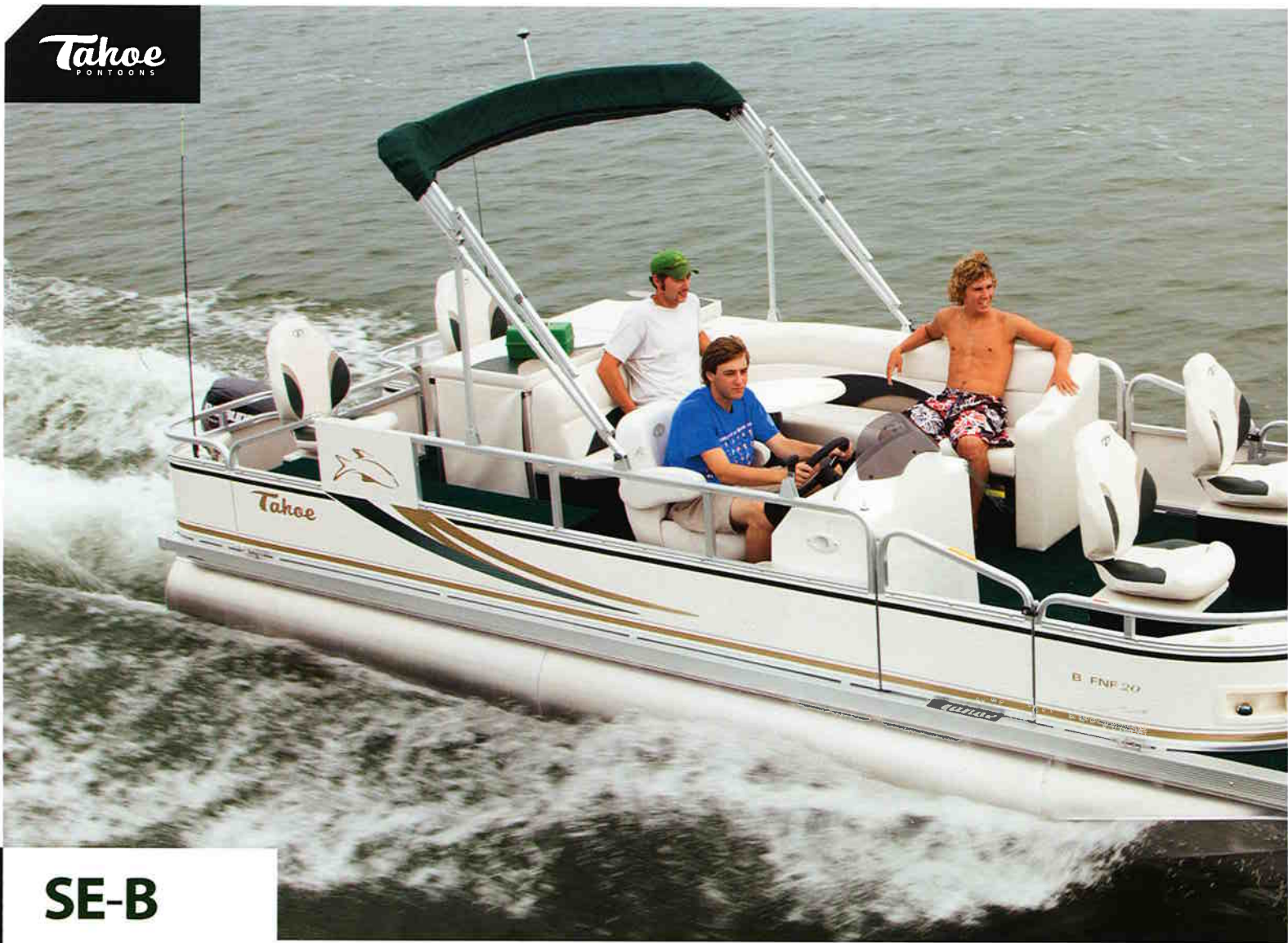


Specifications

24 ft.

Pontoon Length	24 ft.
Pontoon Diameter	25 in.
Deck Length	24 ft.
Deck Width	8.5 ft.
Weight with Furniture	2,035 lbs.
Max. Wt. Capacity	2,660 lbs.
Max. No. of Persons	16 2,240 lbs.
Max. Engine H.P.	135 H.P.

Tahoe
PONTONS



SE-B

Choose the layout that fits your family best.

We proudly offer five unique Tahoe SE-B configurations to match your fishing and boating needs. SE-B Fishing models come loaded with a Garmin® fish finder, one or two livewells, rod holders and mooring cover. Get the family together and vote for the one you like best.





SE-B RF 24'



SE-B FNC 22'
with Rear Entry Option

SE-B RFC 22'

SE-B PS Bow Fish 20'



Specifications

	18 ft.	20 ft.	22 ft.	24 ft.
Pontoon Length	18 ft.	20 ft.	22 ft.	24 ft.
Pontoon Diameter	23 in.	23 in.	23 in.	23 in.
Deck Length	18 ft.	20 ft.	22 ft.	24 ft.
Deck Width	8 ft.	8 ft.	8 ft.	8 ft.
Weight with Furniture	1,491 lbs.	1,659 lbs.	1,817 lbs.	1,943 lbs.
Max. Wt. Capacity	1,850 lbs.	2,005 lbs.	2,350 lbs.	2,550 lbs.
Max. No. of Persons	8 1,480 lbs.	9 1,605 lbs.	12 1,880 lbs.	14 2,040 lbs.
Max. Engine H.P.	75 H.P.	90 H.P.	100 H.P.	115 H.P.



Cascade RE 18'

Cascade

A full-sized cruiser with a compact price.

Don't let the surprising price fool you. The Cascade is a feature-packed pontoon that even comes standard with custom gauges and a CD stereo system!



Cascade FRB 16'



Cascade RE 22'



Cascade FS 20'



Specifications	16 ft.	18 ft.	20 ft.	22 ft.	24 ft.
Pontoon Length	16 ft.	18 ft.	20 ft.	22 ft.	24 ft.
Pontoon Diameter	23 in.	23 in.	23 in.	23 in.	23 in.
Deck Length	16 ft.	18 ft.	20 ft.	22 ft.	24 ft.
Deck Width	8 ft.	8 ft.	8 ft.	8 ft.	8 ft.
Weight with Furniture	1,092 lbs.	1,420 lbs.	1,580 lbs.	1,730 lbs.	1,850 lbs.
Max. Wt. Capacity	1,580 lbs.	1,850 lbs.	2,005 lbs.	2,350 lbs.	2,550 lbs.
Max. No. of Persons	7 / 1,280 lbs.	8 / 1,480 lbs.	9 / 1,605 lbs.	12 / 1,880 lbs.	14 / 2,040 lbs.
Max. Engine H.P.	50 H.P.	75 H.P.	90 H.P.	100 H.P.	115 H.P.

Tahoe
PONTOONS



SE-C FNF 22' with optional Rear Entry Gate & Ladder

SE-C FNF

Specifications 18 ft. 20 ft. 22 ft. 24 ft.

Pontoon Length	18 ft.	20 ft.	22 ft.	24 ft.
Pontoon Diameter	23 in.	23 in.	23 in.	23 in.
Deck Length	18 ft.	20 ft.	22 ft.	24 ft.
Deck Width	8 ft.	8 ft.	8 ft.	8 ft.
Weight with Furniture	1,420 lbs.	1,580 lbs.	1,730 lbs.	1,850 lbs.
Max. Wt. Capacity	1,850 lbs.	2,005 lbs.	2,350 lbs.	2,550 lbs.
Max. No. of Persons	8	9	12	14
Max. Engine H.P.	75 H.P.	90 H.P.	100 H.P.	115 H.P.



Tahoe
PONTOONS



Sport Fish 14'

Sport

Specifications 14 ft. 16 ft.

Pontoon Length	14 ft.	16 ft.
Pontoon Diameter	22 in.	22 in.
Deck Length	14 ft.	16 ft.
Deck Width	7 ft.	7 ft.
Weight with Furniture	912 lbs.	936 lbs.
Max. Wt. Capacity	1,200 lbs.	1,475 lbs.
Max. No. of Persons	4	6
Max. Engine H.P.	25 H.P.	40 H.P.



Sport Fam 16'

Features & Options

S | Standard O | Optional

Grand Tahoe
Sierra
Sierra RC
Aspen
Aspen DC
Classic RF
Classic RCRF
Vista
Vista RC
SE-V RF
SE-V RCRF
Blue Ridge
Blue Ridge DC
SE-B (FNF & FNC)
SE-B (RF & RFC)
SE-B (BF)
Cascade
SE-C FNF
Sport

Grand Tahoe
Sierra
Sierra RC
Aspen
Aspen DC
Classic RF
Classic RCRF
Vista
Vista RC
SE-V RF
SE-V RCRF
Blue Ridge
Blue Ridge DC
SE-B (FNF & FNC)
SE-B (RF & RFC)
SE-B (BF)
Cascade
SE-C FNF
Sport

Hull and Deck Features

25" Pontoons Upgrade (with full riser connectors)	S	S	S	S	S	S	S	S	O	S	O	S	O	S	O	O	O	O	O	O	
23" Pontoons
Full Risers	S	S	S	S	S	S	S	S	S	S	S	S	S	S	S	S	S	S	S	S	
HPP (High Performance Pontoons) available only with CTS	O	O	O	O	O	O	O	O	O	O	O	O	O	O	O	O	O	O	O	O	
CTS (Center Tube System)	O	O	O	O	O	O	O	O	O	O	O	O	O	O	O	O	O	O	O	O	
42 gal Fuel Tank for Center Pontoon Rough Water Package	O	O	O	O	O	O	O	O	O	O	O	O	O	O	O	O	O	O	O	O	
Side Keels	S	S	S	S	S	S	S	S	S	S	S	S	S	S	S	S	S	S	S	S	
3" Heavy Duty Bolted C-Channel Crossbeams	S	S	S	S	S	S	S	S	S	S	S	S	S	S	S	S	S	S	S	S	
Regular C-Channel Crossbeams - 16" OC	O	O	O	O	O	O	O	O	O	O	O	O	O	O	O	O	O	O	O	O	
Z-Bar Crossbeams	
5 x 7 High Performance Package	O	O	O	O	O	O	O	O	O	O	O	O	O	O	O	O	O	O	O	O	
3/4" PTP Flooring	S	S	S	S	S	S	S	S	S	S	S	S	S	S	S	S	S	S	S	S	
Aluminum Decking	O	O	O	O	O	O	O	O	O	O	O	O	O	O	O	O	O	O	O	O	
Aluminum Undersheeting	O	O	O	O	O	O	O	O	O	O	O	O	O	O	O	O	O	O	O	O	
8.5' wide - includes 28 oz Carpet & 10' Top, 25" Dia pontoons	S	S	S	S	S	S	S	S	S	S	S	S	S	S	S	S	S	S	S	S	

Cockpit Features

Radius Front Deck	S	O	O	O	O	O	O	O	O	O	O	O	O	O	O	O	O	O	O	O
2 High Power Stereo Speakers	S	S	S	S	S	S	S	S	S	S	S	S	S	S	S	S	S	S	S	S
4 High Power Stereo Speakers	S	S	S	S	S	S	S	S	S	S	S	S	S	S	S	S	S	S	S	S
4 Stainless Cleat and Lifting Eyes	O	O	O	O	O	O	O	O	O	O	O	O	O	O	O	O	O	O	O	O
4 Stainless Pop-Up Cleats	S	S	S	S	S	S	S	S	S	S	S	S	S	S	S	S	S	S	S	S
Additional 12v Plug near front	S	S	S	S	S	S	S	S	S	S	S	S	S	S	S	S	S	S	S	S
Electric Faucet & water jugs to convert to sink	S	O	O	O	O	O	O	O	O	O	O	O	O	O	O	O	O	O	O	O
Engraved Door Panels with Storage Net	S	S	S	S	S	S	S	S	S	S	S	S	S	S	S	S	S	S	S	S
Finger Guards in Doorways	S	S	S	S	S	S	S	S	S	S	S	S	S	S	S	S	S	S	S	S
Fire Extinguisher	S	S	S	S	S	S	S	S	S	S	S	S	S	S	S	S	S	S	S	S
Logo Non-Skid Strips for doorways	S	S	S	S	S	S	S	S	S	S	S	S	S	S	S	S	S	S	S	S
Mood Lighting	S	O	O	O	O	O	O	O	O	O	O	O	O	O	O	O	O	O	O	O
Portable Cooler	S	S	S	S	S	S	S	S	S	S	S	S	S	S	S	S	S	S	S	S
Portable Cup Holders
Portable Stainless Cup Holders	.	S	S	S	S	S	S	S	S	S	S	S	S	S	S	S	S	S	S	S
Hideaway Cup Holders	S
Stainless Steel Cup Holder on captain stand	S	S	S	S	S	S	S	S	S	S	S	S	S	S	S	S	S	S	S	S
Wine Rack Built-In	S	S	S	S	S	S	S	S	S	S	S	S	S	S	S	S	S	S	S	S
Trash Can Built-In	O	S	S	O	O	O	O	O	O	O	O	O	O	O	O	O	O	O	O	O

Side Door and Glove Box	S	S	S	S	S	S	S	S	S	S	S	S	S	S	S	S	S	S	S	S
Stainless Rail Mounted Gas Grill	O	O	O	O	O	O	O	O	O	O	O	O	O	O	O	O	O	O	O	O
20 oz Carpet - 5 Year Warranty
28 oz Designer Carpet - 5 Year Warranty	S	S	S	S	S	S	S	S	S	S	S	S	S	S	S	S	S	S	S	S
Snap-In-Carpet (upgrade to vinyl flooring also required)	O	O	O	O	O	O	O	O	O	O	O	O	O	O	O	O	O	O	O	O
Floor Matting for Seat Frames	S	S	S	S	S	S	S	S	S	S	S	S	S	S	S	S	S	S	S	S
Wall Spacers	S	S	S	S	S	S	S	S	S	S	S	S	S	S	S	S	S	S	S	S
.030 Wall Skin	S	S	S	S	S	S	S	S	S	S	S	S	S	S	S	S	S	S	S	S
Ribbed Wall Railing	S	S	S	S	S	S	S	S	S	S	S	S	S	S	S	S	S	S	S	S

Furniture Options

Aluminum Bench Frames	S	S	S	S	S	S	S	S	S	S	S	S	S	S	S	S	S	S	S	S
Ergonomic Table with Locking Pedestal	O	1	2	1	2	1	2	O	O	O	O	O	O	O	O	O	O	O	O	O
Ergonomic Table with Adjustable Height Pedestal	1	O	O	O	O	O	O	O	O	O	O	O	O	O	O	O	O	O	O	O
Oval Table w/Regular Pedestal	O	O	O	O	O	O	O	O	O	O	O	O	O	O	O	O	O	O	O	O
Adjustable Height Table Pedestal	S	O	O	O	O	O	O	1	2	1	2	1	2	1	1	1	1	1	1	1
Luxury High Back Reclining Admiral's Chair	S	S	S	O	S	S	O	S	O	S	O	S	O	S	O	S	O	S	O	S
Luxury Low Back Reclining Commander's Chair	.	.	.	S	S	.	.	O	.	O	.	O	.	O	.	O	.	O	.	O
Luxury Low Back Non-reclining Captain's Chair	S	.	S	.	S	.	S	.	S	.	S	.	S
2 Bow Luxury Low Back Reclining Commander's Chair
2 Bow Luxury Low Back Non-reclining Captain's Chair	.	.	.	S	.	.	.	S	.	S	.	S	.	S	.	S	.	S	.	S
Adjustable Height Seat Pedestal	S	O	O	O	O	O	O	O	O	O	O	O	O	O	O	O	O	O	O	O
Double-wide Luxury Reclining Admiral's Chair (8.5' wide only)	O	O	O	O	O	O	O	O	O	O	O	O	O	O	O	O	O	O	O	O
High Back Luxury Recliner Chair with Flip-up Bolster	O	O	O	O	O	O	O	O	O	O	O	O	O	O	O	O	O	O	O	O
Lounge Arms with storage	S	S	S	S	S	S	S	S	S	S	S	S	S	S	S	S	S	S	S	S
2 Bow Fishing Chairs on Front Deck
2 Bow Fishing Chairs (instead of bow benches)	.	O
2 Bow Fishing Chairs with Rod Holder
2 Stern Fishing Chairs with Rod Holder
HDPE Classic Captain Stand (with deep ice tray)	S	S	S	S	S	S	S	S	S	S	S	S	S	S	S	S	S	S	S	S
HDPE Deluxe SE Captain Stand (no sink)	O	O	O	O	O	O	O	O	O	O	O	O	O	O	O	O	O	O	O	O
HDPE SE Captain Stand (no sink)	O	O	O	O	O	O	O	O	O	O	O	O	O	O	O	O	O	O	O	O
Embroidered Logos in seating	S	S	S	S	S	S	S	S	S	S	S	S	S	S	S	S	S	S	S	S
Matrix 50 Vinyl (simulated leather)	S
Matrix 50 Vinyl	.	S	S	S	S	S	S	S	S	S	S	S	S	S	S	S	S	S	S	S

Option Gallery

- A Snap in Carpet
- B Bimini Top Transport Bracket (SE)
- C Inflatable Bow Bed
- D 1/2 Enclosure
- E Stainless Cup Holder
- F Aluminum Deck
- G Waterski / Wakeboard Tower
- H Power Assist Steering
- I Center Pontoon
- J New Style Mood Light Bar
- K Adjustable Height Table
- L Full Enclosure
- M Waterproof Stereo
- N Standard Ski Tow Bar
- O Doublewide Luxury Admiral Chair
- P Spotlight for Front Deck
- Q E Drive Electric Outboard Motor
- R Inboard / Outboard
- S High Back (Admiral's) Luxury Recliner with Flip-Up Bolster

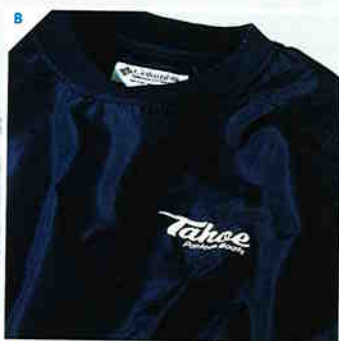


Color Options

	Main	Accent	Pipe Trim	Carpet SE	Carpet Classic
Hunter Green	[Color Swatch]	[Color Swatch]	[Color Swatch]	[Color Swatch]	[Color Swatch]
Sage	[Color Swatch]	[Color Swatch]	[Color Swatch]	[Color Swatch]	[Color Swatch]
Blue	[Color Swatch]	[Color Swatch]	[Color Swatch]	[Color Swatch]	[Color Swatch]
Eggplant	[Color Swatch]	[Color Swatch]	[Color Swatch]	[Color Swatch]	[Color Swatch]
Burgundy	[Color Swatch]	[Color Swatch]	[Color Swatch]	[Color Swatch]	[Color Swatch]
Yellow	[Color Swatch]	[Color Swatch]	[Color Swatch]	[Color Swatch]	[Color Swatch]
Topaz	[Color Swatch]	[Color Swatch]	[Color Swatch]	[Color Swatch]	[Color Swatch]
Red	[Color Swatch]	[Color Swatch]	[Color Swatch]	[Color Swatch]	[Color Swatch]
Black	[Color Swatch]	[Color Swatch]	[Color Swatch]	[Color Swatch]	[Color Swatch]
Kryptonite	[Color Swatch]	[Color Swatch]	[Color Swatch]	[Color Swatch]	[Color Swatch]
Blueonce	[Color Swatch]	[Color Swatch]	[Color Swatch]	[Color Swatch]	[Color Swatch]

Tahoe Merchandise

A	Perfect Pima Polo Shirt, Navy or White	\$30.00	#2300
B	Navy Blue Columbia Windbreaker	\$39.00	#5100
C	Jetstream 24 Can Cooler	\$32.00	#4100
D	Clubhouse Cap, Navy or White	\$15.00	#1500
E	Sandwich Bill Hat, Black & Tan	\$12.00	#1100
F	Tahoe Travel Mug	\$7.00	#3100
G	Stainless Steel Tumbler	\$12.00	#3300
H	Stainless Bottle & Can Opener	\$5.00	#6100
I	Waterproof Necktote	\$3.00	#7100



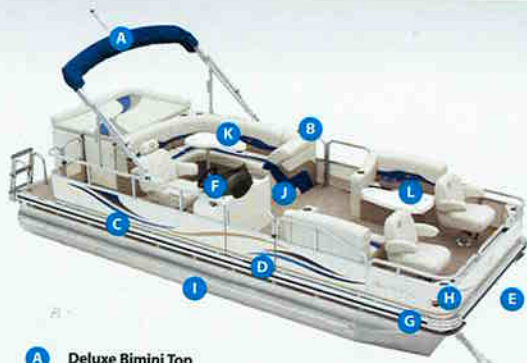
MAIL ORDERS & PAYMENT TO:

Tahoe Pontoon Mfg.
Pam Gross
3 Michigan Ave
Alma, MI 48801

Fax: (989) 463-8226

Include 6% Tax on order.
We accept check, Visa or Mastercard.

SE - Series Construction

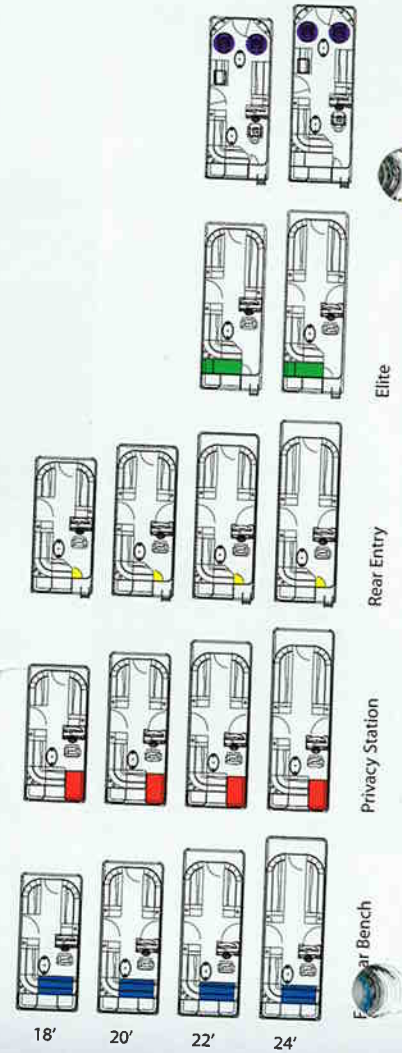
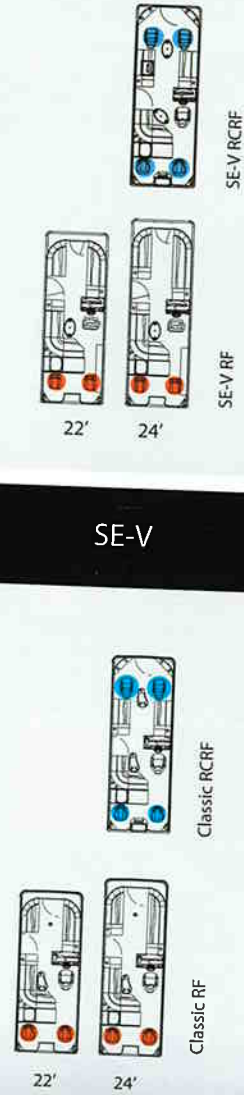
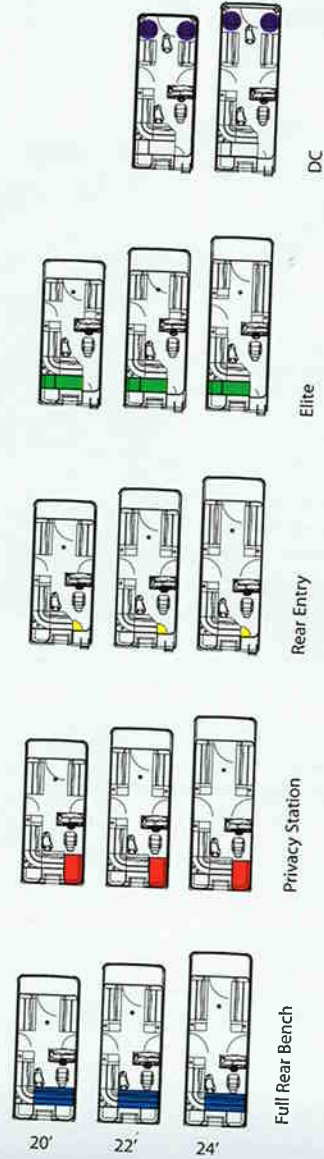
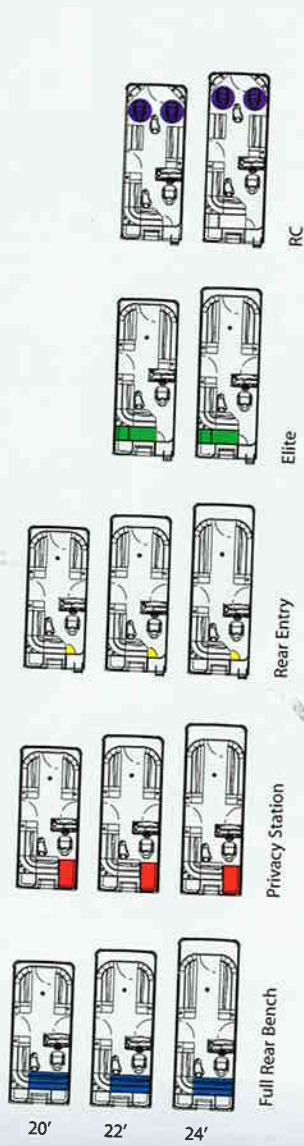
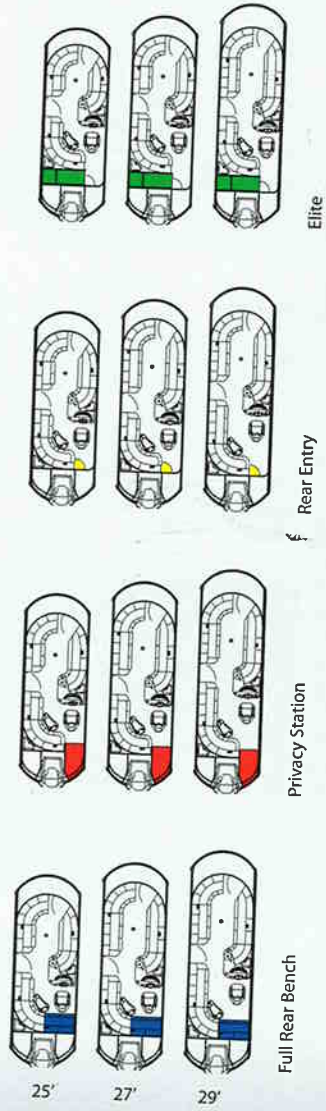


- A Deluxe Bimini Top**
Find shade from the hot summer sun with a Deluxe Bimini Top. Includes a 5 year limited warranty.
- B Finger Guards**
Keep little fingers (and big fingers) out of danger.
- C Full Riser (Except CSC, SE-C, Sport)**
Pontoon are connected to the frame with heavy-duty extruded risers bolted to the crossbeam with 3 / 8" SST bolts.
- D Reflective Striping**
Improves your visibility on the water for enhanced safety.
- E Bow Eye**
Reinforced stainless bow eye provides excellent strength for haul-out
- F One Piece Captain's Helmstand**
Command your vessel from behind a beautiful one piece helmstand.
- G 4 Stainless Steel Cleats & Lifting Eye Assemblies**
Durable hardware with class.
- H Wall Spacers**
Wall rails are raised to allow drainage and ventilation while stored.
- I Bottom Keel Protection**
Special welded keels protect against damage from impact.
- J 20oz. Diamond Textured Carpet**
Stylish carpet as durable as our pontoons. 5 year limited warranty.
- K Custom Colors (Page 32)**
Tahoe models are available in many different color choices.
- L Matrix - 50 Vinyl**
 - New! 50 gauge vinyl with a 24% substructure is stronger, less likely to tear and will not puncture like traditional expanded
 - New Herringbone multi-directional stretch backing promotes quicker recovery
 - Greater stitch strength



- 1 Worlds Strongest Nose Cone**
The absolute strongest in the industry. The one-piece construction makes it virtually impossible to break off a splash fin. The double wrapped leading edge provides maximum impact protection. The entire cone is tapered and inserted in the tube for even more strength.
- 2 Quiet, Extra Thick Wall Skins**
Heavy-duty wall skins feature the Silencer Strip™ on all edges for the quietest walls. Wall skins are strip-locked into the horizontal and vertical supports, then braced. The result is the most durable, quiet wall available!
- 3 Superior Quality Pontoon Tube**
.080" thickness H5052 aircraft aluminum alloy. Multi-baffled near each weld for maximum strength and air lock. Hand-welded to rigid standards. Neatest welds in the industry. Available in optional 25" diameter.
- 4 Heavy-Duty Rub Rail**
All anodized for lasting beauty. Bolted for maximum strength. Features new "L" ridge at the bottom for superior strength.
- 5 Wall Railing**
1.25" across and .090" thickness horizontal and vertical rails. Tahoe features more vertical support rails than any other. All rails are completely anodized for lasting beauty and corrosion resistance.
- 6 Motor Pod**
.125" thickness with double splash fins. 2" thick aluminum sheathed transom is fully welded. The entire pod is double bolted and supported by five heavy-duty crossbeams.
- 7 Aluminum Seat Frames & Kick**
Clearly superior. Lifetime warranty. Aluminum seat frames won't rot like wood. Won't crack or hold water like plastic. Extra large compartments provide the largest under seat storage.
- 8 U-Bar**
Exclusive Heavy Duty U-Bar is strategically placed at the very front of the deck for impact resistance.
- 9 Lifetime 3/4" Flooring**
The thickest and heaviest flooring used in the industry. This state-of-the-art, injection treated, marine flooring features a lifetime limited warranty.

Interior Diagrams



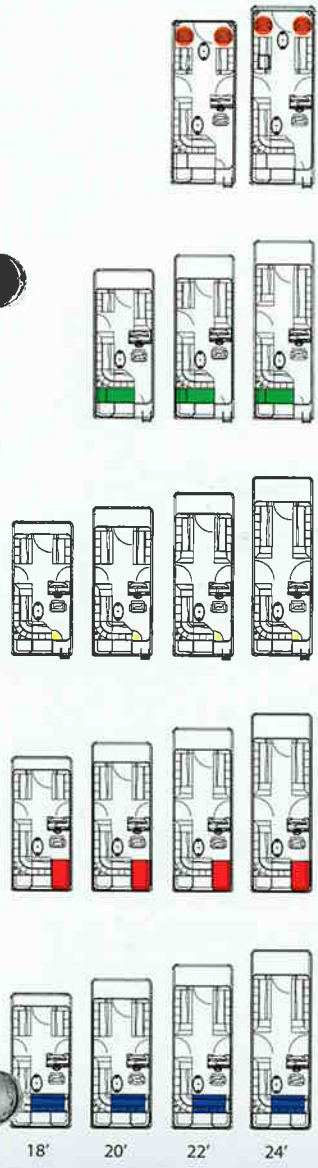
Grand Tahoe Classic

Sierra Classic

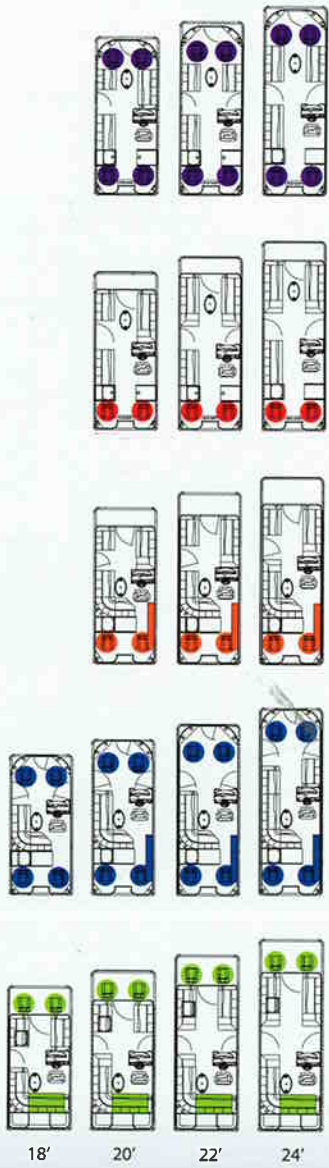
Aspen Classic

Classic Fish

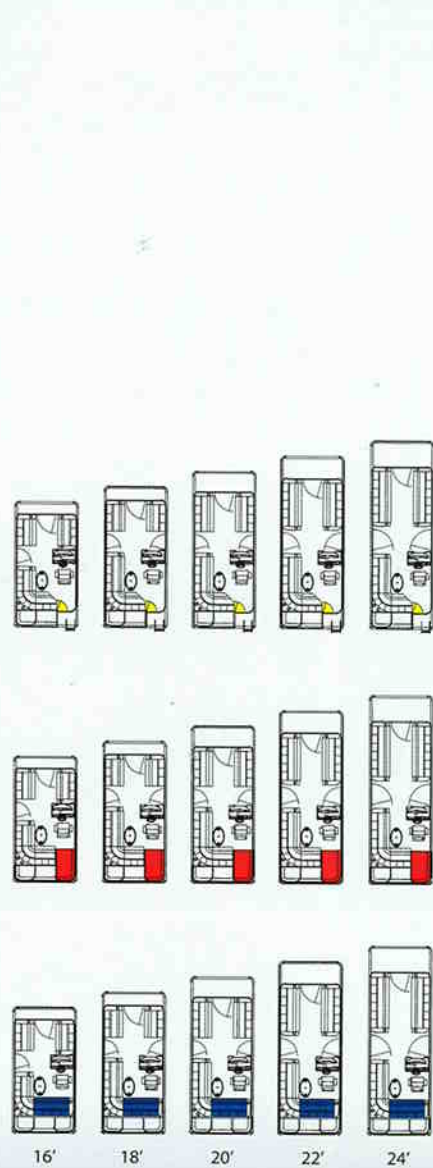
Vista SE



Blue Ridge SE



SE-B



Cascade SE



SE-C



Sport

2007 Tahoe PONTOONS

Tahoe Pontoons

903 Michigan Ave. • Alma, Michigan 48801

800.334.2913 (worldwide)

989.463.2112 • 989.463.8226 (fax)

www.tahoepontoons.com



**HONDA
MARINE**

MATRIX-50

Tahoe Pontoons is a member of the
National Marine Manufacturer's Association

Dimensions, capacities, ratings and additional specifications plus complete warranty and service information are available from your Tahoe dealer. Product illustrations and data within this catalog are based upon information available at the time of publication. Tahoe reserves the right to make changes without notice or obligation. Ask your local Tahoe dealer for the most current product specifications prior to purchase. Some of the equipment shown separately or on products illustrated in this catalog may be optional at extra cost. All Tahoe boats meet or exceed the standards established by the ABYC and USCG flotation, fuel systems, ventilation, electrical and safety.



Design and photography by Adventure Creative Group.
www.adventurecreative.com © 2007

