

Avalon

LUXURY PONTOON BOATS



THE **ART** OF THE
Pontoon



Master COLLECTION

Excalibur

Elite – Windshield	6
Quad Lounge – Windshield	7
Rear Electric Lounge – Windshield	8
Features, Specifications & Interiors	9

Ambassador

Elite – Windshield	10
Quad Lounge	11
Rear Electric Lounge	12
Rear J Lounge	13
Entertainer	14
Cruise Funship	15
Twin engine option	16
Features, Specifications & Interiors	17

Catalina Platinum

Cruise	18
Elite – Windshield	19
Rear Electric Lounge	20
Quad Lounge	21
Entertainer	22
Rear J Lounge	23
Cruise Funship, Entertainer Funship	24
Features, Specifications & Interiors	25

Signature COLLECTION

Catalina

Elite	26
Cruise	27
Quad Lounge	28
Rear Lounge	29
Entertainer	30
Rear J Lounge	31
Cruise Funship	32
Quad Fish	33
Rear Fish	34
Features, Specifications & Interiors	35

Avalon LSZ

Cruise	36
Cruise Rear Bench, Cruise II	37
Elite – Windshield	38
Entertainer	39
Quad Lounge	40
Rear Lounge	41
Quad Fish, Rear Fish	42
Features, Specifications & Interiors	43

Avalon GS

Cruise, Cruise II	44
Center Console Fish	45
Quad Fish, Rear Fish	46
Features, Specifications & Interiors	47

Boutique 7.5' & 8' Widths COLLECTION

Avalon LS 8' Wide

Cruise Rear Bench	48
Quad Lounge, Entertainer	49
Rear Fish, Bow Fish	50
Features, Specifications & Interiors	51

Venture 7.5' & 8' Wide

Fish N Cruise	52
Cruise	52-53
Quad Lounge	53
Cruise Rear Bench, Bow Fish	54
Rear Fish, Quad Fish	55
Features, Specifications & Interiors	56

Gallery of Features & Options

Performance & Watersports	57
Features & Options	58-63
Color Options	63

WARRANTY



LIFETIME LIMITED* TRANSFERABLE STRUCTURAL WARRANTY

For noncommercial use, single engine equipped boats
(5 Year limited* nontransferable structural warranty
for non-commercial use, TWIN ENGINE EQUIPPED BOATS)

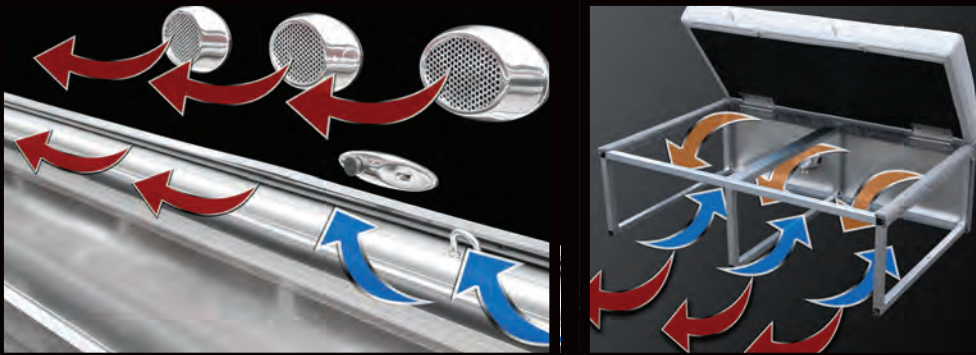
**INCLUDES - PONTOONS, CROSSBEAMS, SEAT FRAMES,
MOTOR MOUNTS, WOOD DECKING AND RAIL STRUCTURE!**

**5 YEAR LIMITED* TRANSFERABLE BOW TO STERN WARRANTY
ON ALL OTHER COMPONENTS ON YOUR BOAT**

*Warranty applies to 2018 model boats. See dealer for full warranty information including limitations and exclusions.

CONSTRUCTION

EXCLUSIVE HIGH-QUALITY FEATURES



You won't have to deal with mildew or fungus with Avalon's exclusive Flo Thru Ventilation™ Seating. Unlike plastic seating, our exclusive aluminum seat frames have external and internal air flow that dries out the seat compartments while moving and even when the boat is stored!



Our exclusive aluminum seat frames have 30 percent more storage than conventional plastic seat frames. Try putting all this in plastic seat storage!



D Rail anodized Bimini frame



Avalon's unique suspension seat cushions provide soft comfortable cushions that don't bottom out on a hard support surface.

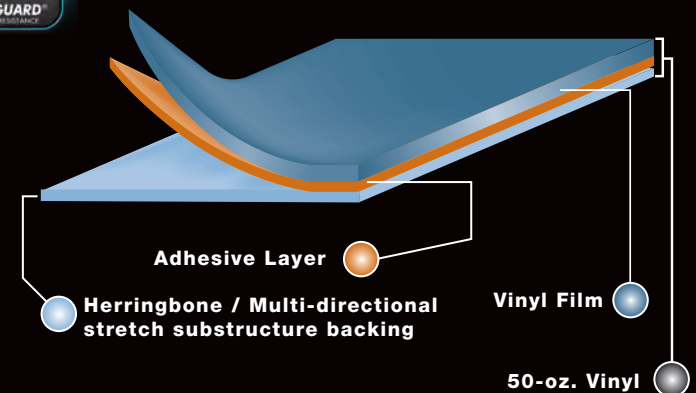


Heavy-duty, stylishly designed, seat frame cladding eliminates fabric covering and provides a vented, beautiful accent to Avalon's Deco designs.



Avalon's exclusive Matrix 50 heavy-duty 50 oz. marine seat covering with a 24 percent substructure is tested strongest against tears and punctures.

- New Herringbone multi-directional stretch backing promotes quicker recovery
- Greater stitch strength
- Permaguard stain protection

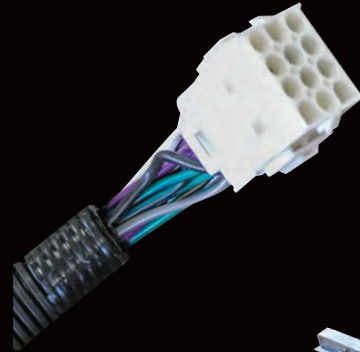




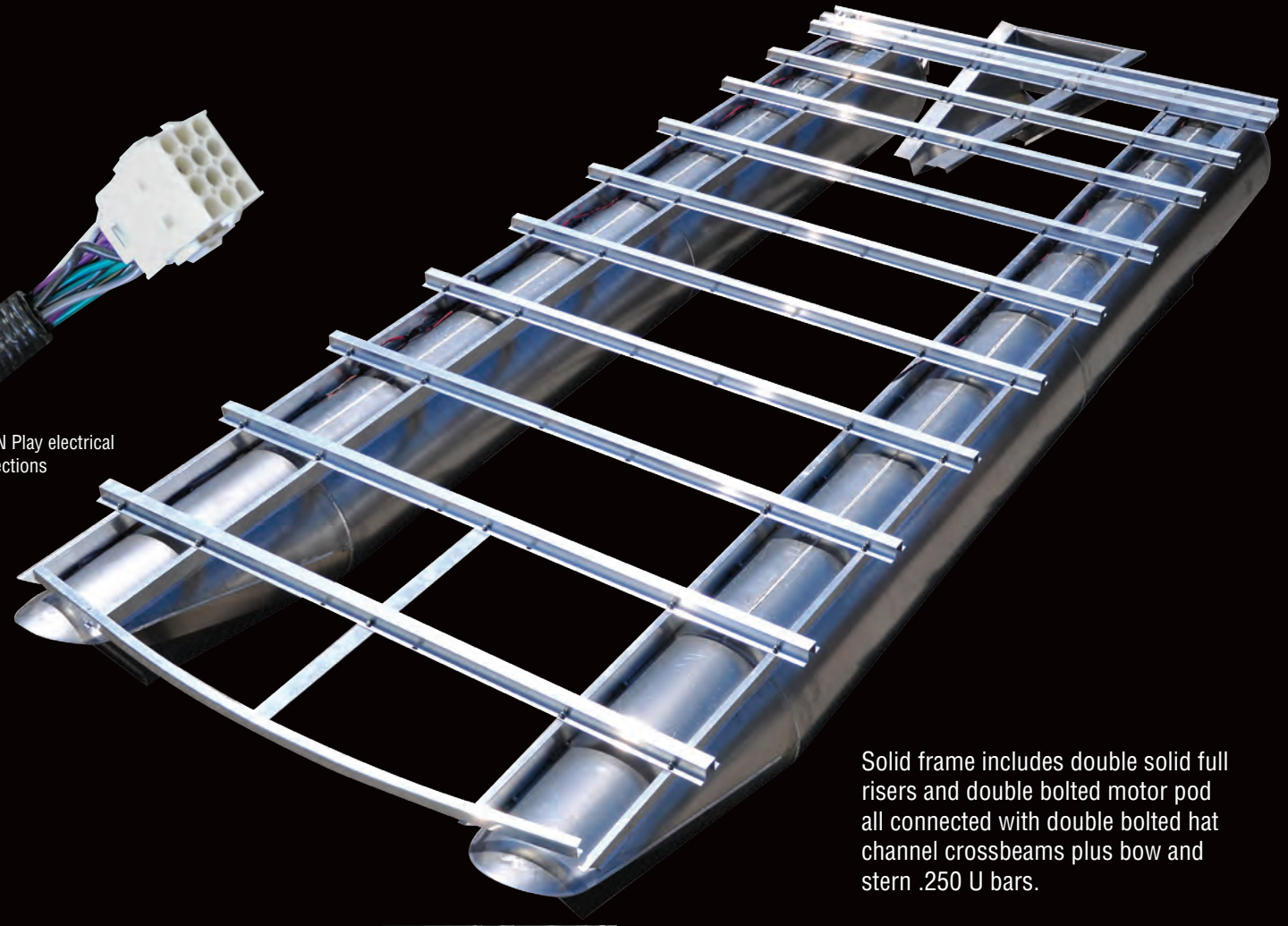
CONSTRUCTION



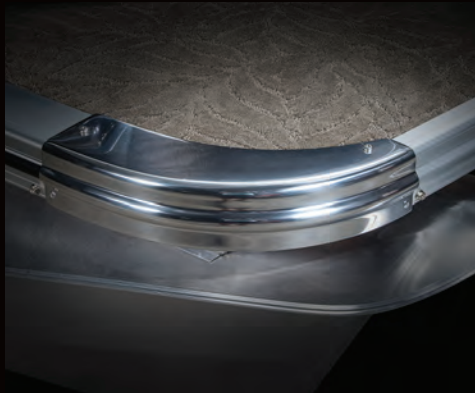
Heavy-duty rub rail with rubber bumper



Plug N Play electrical connections



Solid frame includes double solid full risers and double bolted motor pod all connected with double bolted hat channel crossbeams plus bow and stern .250 U bars.



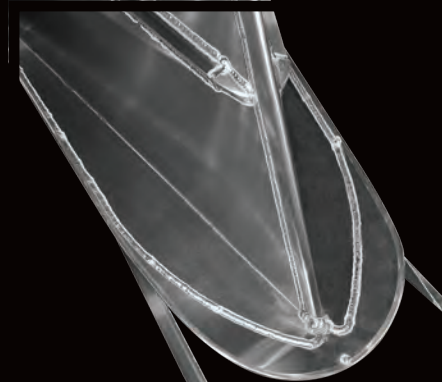
Heavy-duty deck corner protection



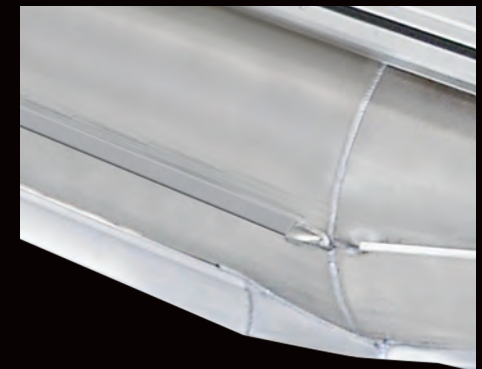
Strongest bow eye connected to 3 crossbeams



One-piece nose cone has heavy-duty double-wrapped, double-thickness .200 leading edge.



Integrated nose cone splash fins cannot be broken off! Fins have welded edge guard.



Exclusive side protector keel – protects pontoon from side impact at docks, provides a spray diversion and makes pontoon structure stronger.

EXCALIBUR

ELITE - WINDSHIELD

THE **ART**
OF THE *Pontoon*

EXCALIBUR EL-W 2785

Avalon

BOATS SHOWN MAY SHOW OPTIONAL EQUIPMENT.



QUAD LOUNGE - WINDSHIELD

EXCALIBUR MASTER COLLECTION

EXCALIBUR QL-W 2785



Avalon
LUXURY PONTOON BOATS

EXCALIBUR

REAR ELECTRIC LOUNGE - WINDSHIELD



EXCALIBUR RL-W 2785

THE **ART**
OF THE *Pontoon*



- Commander fiberglass helmstand with full windshield, upholstered automotive-style stitched dash and black Pearlwood dash panel
- Garmin 53CV color fish finder/depth finder/GPS
- Touchscreen dash with detailed information center, light controls and high-power stereo
- USB and auxiliary input
- (6) JL Premium sound speakers with chrome grill, LED speaker lights, lighted speaker rings and JL Audio 4-channel amp
- (2) – 12-volt power points
- Steering – SeaStar hydraulic tilt
- Burano steering wheel with black Pearlwood accents
- GX solid-welded aluminum painted walls with fore and aft fiberglass accents including integrated flow-through ventilation and built-in sport docklights
- Finished interior wall panels
- High-flex bold chrome logos
- SST rear gate with perforated metal panel and lift-n-lay latches, aluminum painted bow gates with lift-n-lay latches
- Rear stainless steel telescoping ladder
- Ski tow bar
- Battery dual smart switch system
- Quick-release fender holders with straps
- Courtesy light on helmstand
- RGB underwater lights
- RGB accent docklights built into walls
- RGB interior mood lighting and RGB under rubrail lighting
- RGB lighted cup holders
- USCG navigation lights
- Exclusive Matrix 50 soft touch seat vinyl
- Suspension seating
- Lounge arms with storage (based on floorplans)
- Waveglider triple 27" pontoon package with high-performance lifting fins and aluminum Waveshield
- Lifetime aluminum seat frames with flow-through ventilation
- Admiral high-back reclining driver's chair with self-leveling arms and color-matched accents
- Chair adjustment slider, front, back, rotate
- Adjustable height seat pedestal

EXCALIBUR	Length Class	Boat Length Overall	Deck Length	Pontoon Diameter	Width	Dry Weight	Max Weight Capacity	Max Persons Pounds	Max Number Persons	Max Engine HP
2785 X 3 27" WG	27	28' 6"	27'3"	27" x 3	8.5'	5,000	3,190	2,230	16	400

- Table – smoked glass rectangle table with wine glass cutouts and SST cup holders
- Trash can built into lounge arm
- Decorative bronze or pewter seat frame cladding
- Deco movable stainless cup holders armrest (2)
- Full deck covered with Infinity Brushstroke decorative vinyl flooring
- Seat frame floor matting
- Top Bimini with heavy-duty black aluminum D-frame, SST quick-release Bimini mounts and transport position brackets

- Full mooring cover – color-matched
- Keels side protector
- Heavy-duty deck corner impact protection – stainless steel
- Tapered front deck
- Extended rear deck
- Pontoon double full risers
- 3" Rub rail with black rubber insert
- (4) Stainless steel pull-up cleats
- Deck bolted with SST nut and bolts
- Fuel 58-gallon remote fill in center pontoon
- SST gas cap and vent

2785

EL-W



QL-W



RL-W



Avalon

LUXURY PONTOON BOATS

AMBASSADOR ELITE - WINDSHIELD



AMBASSADOR EL-W 2785

THE **ART**
OF THE *Pontoon*



QUAD LOUNGE

AMBASSADOR MASTER COLLECTION

AMBASSADOR QL 2785

Avalon
LUXURY PONTOON BOATS

AMBASSADOR

REAR ELECTRIC LOUNGE



AMBASSADOR RL 2785

THE **ART**
OF THE *Pontoon*



REAR J LOUNGE

AMBASSADOR MASTER COLLECTION

AMBASSADOR RJ 2785



Avalon
LUXURY PONTOON BOATS

AMBASSADOR ENTERTAINER

AMBASSADOR ENT 2785

THE ART OF THE *Pontoon*



CRUISE FUNSHIP

AMBASSADOR MASTER COLLECTION



AMBASSADOR CRFS 2785

Avalon
LUXURY PONTOON BOATS

AMBASSADOR TWIN ENGINE OPTION



THE **ART** OF THE *Pontoon*



STANDARD FEATURES

AMBASSADOR MASTER COLLECTION



- Admiral fiberglass helmstand with raised platform, upholstered automotive-style stitched dash, black Pearlwood analog dash panel includes SST refrigerator, sink with 2-gallon water reservoir, electric wine rack, SST drawer with Corian surface and glove box (27' except ELW, ENT)
- Commander fiberglass helmstand with raised platform, upholstered automotive-style stitched dash, black Pearlwood analog dash panel and glove box (all ENT and 25'-except ELW)
- Commander fiberglass helmstand with full windshield, upholstered automotive-style stitched dash and black Pearlwood analog dash panel (ELW)
- Tach, volt, fuel gauges
- GPS speedometer
- Garmin 53CV color fish finder/depth finder/GPS
- JL Audio Mediamaster MM50 stereo
- USB and auxiliary input
- (6) JL Premium sound speakers with chrome grill, LED speaker lights, lighted speaker rings and JL Audio 4-channel amp
- (2) – 12-volt power points
- Steering – SeaStar hydraulic tilt
- Burano steering wheel with black Pearlwood accents
- Deco ATI retro automotive-style solid-welded aluminum multi-level two-tone painted walls with SST grillwork, grab rail and SST lighted flow-through air vents
- Finished interior wall panels
- High-flex bold chrome logos
- SST front and rear gates with smoked glass panel and SST EZ lift latch
- Rail-mounted grill (ENT only)
- Rear stainless steel telescoping ladder
- Ski tow bar
- Battery dual smart switch system
- Quick-release fender holders with straps
- Courtesy light on helmstand
- LED accent docklights built into walls
- Interior mood lighting
- USCG navigation lights
- Adjustable height seat pedestal (EL-W only)
- Admiral high-back reclining driver's chair with self-leveling arms and color-matched accents

- Chair adjustment slider, front, back, rotate
- Table – smoked glass curved table with wine glass cutouts and SST cup holders (CRFS only)
- Table – smoked glass rectangle table with wine glass cutouts and SST cup holders
- Table – smoked glass round cocktail table with wine glass cutouts and SST cup holders (QL, RL and RJ only)
- Waveglider triple 27" pontoons with high-performance lifting fins and aluminum Waveshield
- Trash can built into lounge arm
- Exclusive Matrix 50 soft touch seat vinyl
- Suspension seating
- Lounge arms with storage (based on floorplans)
- Lifetime aluminum seat frames with flow-through ventilation
- Seat frame floor matting
- Decorative bronze or pewter seat frame cladding
- Deco movable cup holders with stainless cup holders (2)
- Lighted cup holders
- Full deck covered with Infinity Brushstroke decorative vinyl flooring
- Top Bimini with heavy-duty black aluminum D-frame, SST quick-release Bimini mounts and transport position brackets (except CRFS)
- Full mooring cover – color-matched
- Privacy station curtain and frame
- Keels side protector
- 25" transom (standard on CRFS only)
- Heavy-duty deck corner impact protection – stainless steel
- Tapered front deck
- Extended rear deck
- Pontoon double full risers
- 3" Rub rail with black rubber insert
- (4) Stainless steel pull-up cleats
- Bolted deck
- SST nonskid strips for entry gates
- Fuel 58-gallon remote fill in center pontoon
- SST gas cap and vent

AMBASSADOR	Length Class	Boat Length Overall	Deck Length	Pontoon Diameter	Width	Dry Weight	Max Weight Capacity	Max Persons Pounds	Max Number Persons	Max Engine HP
2585 X 3 27" WG	25	26' 6"	25' 3"	27" x 3	8.5'	4,600	2,900	1,950	14	300
2785 X 3 27" WG	27	28' 6"	27'3"	27" x 3	8.5'	5,000	3,190	2,230	16	400

ENT 2785		2785	2585
ENTBT Bar Table with Fish Chairs			
	EL-W		
ENTGB Galley			
	QL		
ENTPG Port Prep Center and Star Bench			
	RJ		
ENTSG Star Galley and Port Bench			
	RL		
ENTBB Port and Star Benches			
	CRFS		

Avalon
LUXURY PONTOON BOATS

CATALINA PLATINUM CRUISE

THE **ART**
OF THE *Pontoon*



CATALINA PLATINUM CR 2385



ELITE - WINDSHIELD

CATALINA PLATINUM MASTER COLLECTION

CATALINA PLATINUM EL-W 2585



CATALINA PLATINUM QL-W 2785

Avalon
LUXURY PONTOON BOATS



CATALINA PLATINUM

REAR ELECTRIC LOUNGE



CATALINA PLATINUM RL 2785

THE ART OF THE *Pontoon*



QUAD LOUNGE

CATALINA PLATINUM MASTER COLLECTION



CATALINA PLATINUM QL 2585

Avalon
LUXURY PONTOON BOATS

CATALINA PLATINUM ENTERTAINER

CATALINA PLATINUM ENT 2785



THE **ART**
OF THE *Pontoon*



REAR J LOUNGE

CATALINA PLATINUM MASTER COLLECTION



CATALINA PLATINUM RJ 2585

Avalon
LUXURY PONTOON BOATS

CATALINA PLATINUM

FUNSHIP CRUISE/ENTERTAINER



CATALINA PLATINUM ENTFS 2785

THE **ART** OF THE *Pontoon*



STANDARD FEATURES

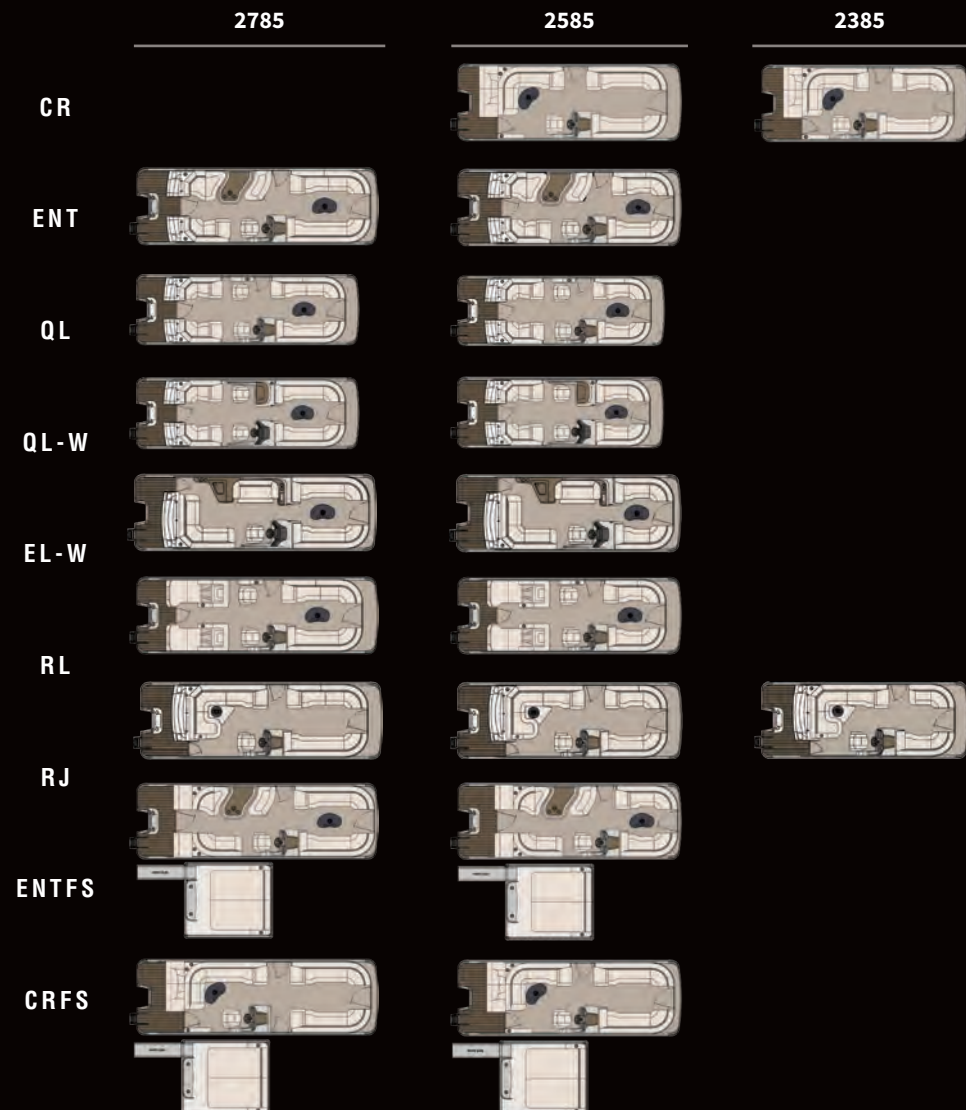
CATALINA PLATINUM MASTER COLLECTION

- Ensign II fiberglass helmstand with soft touch black recessed dash and Greywood accents
- Commander fiberglass helmstand with full windshield, upholstered automotive-style stitched dash and black Pearlwood dash panel (QL-W and EL-W only)
- Tach, volt, fuel gauges
- GPS speedometer
- Garmin Striker 5CV color fish finder/depth finder (except QL-W and EL-W)
- Garmin 53CV color fish finder/depth finder/GPS (QL-W and EL-W only)
- Infinity PRV315BT stereo
- USB and auxiliary input
- (4) Infinity stereo speakers INF622MB with chrome grill and lighted speaker rings (except CRFS and ENTFS)
- (6) Infinity stereo speakers INF622MB with chrome grill, lighted speaker rings and high-performance amp (CRFS and ENTFS only)
- 12-volt power point
- Steering – mechanical tilt (except QL-W, EL-W, CRFS and ENTFS)
- Steering – SeaStar hydraulic tilt (CRFS, ENTFS, QL-W and EL-W only)
- Burano steering wheel with black Pearlwood accents
- Removable windshield (except QL-W and EL-W)
- Deco 2 external multi-panel retro two-tone walls with lighted flow-through air vents
- Interior composite wall panels
- High-flex bold chrome logos
- Gate with SST EZ lift latch
- Rear stainless steel telescoping ladder
- Ski tow bar (CRFS, ENTFS, QL-W and EL-W only)
- Battery dual smart switch system (CRFS and ENTFS only)
- Quick-release fender holders with straps
- Courtesy light on helmstand
- LED accent docklights built into walls
- Interior mood lighting
- USCG navigation lights
- Adjustable height seat pedestal (QL-W and EL-W only)
- Admiral high-back reclining driver's chair with self-leveling arms and color-matched accents
- Chair adjustment slider, front, back, rotate
- Table – smoked glass curved table with wine glass cutouts and SST cup holders (except RJ)
- Table – smoked glass round cocktail table with wine glass cutouts and SST cup holders (RJ only)
- Trash can built into lounge arm (except RL)
- Privacy station curtain and frame (except QL-W and 23' RJ)
- Exclusive Matrix 50 soft touch seat vinyl
- Suspension seating
- Lounge arms with storage (based on floorplans)
- Better-than-teak rear deck with deco carpet on remainder
- Top Bimini with heavy-duty aluminum D-frame, SST quick-release Bimini mounts and transport position brackets (except CRFS and ENTFS)
- Lifetime aluminum seat frames with flow-through ventilation
- Seat frame floor matting
- Decorative bronze or pewter seat frame cladding

- Deco movable cup holders with stainless cup holders armrest (2)
- Lighted cup holders
- Full mooring cover – color-matched
- Waveglider triple 27" pontoons with high-performance lifting fins and aluminum Waveshield (CRFS and ENTFS only)
- Waveglider triple 25" pontoons with high-performance lifting fins and aluminum Waveshield (QL-W and EL-W only)
- Keels side protector
- 25" transom (CRFS and ENTFS only)
- Deck corner impact protection – polished aluminum
- Tapered front deck
- Extended rear deck
- Pontoon double full risers
- 3" Rub rail with black rubber insert
- (4) Stainless U-bolt and cleat combo
- Vinyl nonskid strips for entry gates
- Fuel 32-gallon capacity (CR only)
- Fuel 58-gallon remote fill in center pontoon (CRFS, ENTFS, QL-W and EL-W only)
- Fuel 29-gallon capacity remote fill transom mount (ENT, QL, RJ and RL only)
- SST gas cap and vent

CATALINA PLATINUM	Length Class	Boat Length Overall	Deck Length	Pontoon Diameter	Width	Dry Weight	Max Weight Capacity	Max Persons Pounds	Max Number Persons	Max Engine HP
2385 25"	23	23' 5"	23' 3"	25"	8.5'	2,150	2,150	1,540	11	125
2385 25" EP	23	23' 5"	23' 3"	25" x 3	8.5'	2,450	2,150	1,540	11	150
2385 25" SP	23	24' 6"	23' 3"	25" x 3	8.5'	2,900	2,560	1,600	12	200
2385 25" WG	23	24' 6"	23' 3"	25" x 3	8.5'	2,900	2,560	1,600	12	250
2585 25"	25	25' 5"	25' 3"	25"	8.5'	2,450	2,430	1,770	13	135
2585 25" EP	25	25' 5"	25' 3"	25" x 3	8.5'	2,650	2,650	1,770	13	150
2585 25" SP	25	26' 6"	25' 3"	25" x 3	8.5'	3,100	2,825	2,015	14	200
2585 25" WG	25	26' 6"	25' 3"	25" x 3	8.5'	3,100	2,825	2,015	14	250
2785 25"	27	27' 5"	27' 3"	25"	8.5'	2,650	2,675	2,015	14	150
2785 25" EP	27	27' 5"	27' 3"	25" x 3	8.5'	3,050	2,625	2,015	14	150
2785 25" SP	27	28' 6"	27' 3"	25" x 3	8.5'	3,300	3,120	2,310	16	200
2785 25" WG	27	28' 6"	27' 3"	25" x 3	8.5'	3,300	3,120	2,310	16	300

CP FUNSHIP	Length Class	Boat Length Overall	Deck Length	Pontoon Diameter	Width	Dry Weight	Max Weight Capacity	Max Persons Pounds	Max Number Persons	Max Engine HP
2585 27" WG	25	26' 6"	25' 3"	27" x 3	8.5'	4,200	3,070	2,000	14	250
2785 27" WG	27	28' 6"	27' 3"	27" x 3	8.5'	4,485	3,320	2,370	17	250



CATALINA ELITE

CATALINA EL 2585

THE **ART**
OF THE *Pontoon*



CRUISE

CATALINA SIGNATURE COLLECTION

CATALINA CR 2585



Avalon
LUXURY PONTOON BOATS

CATALINA

QUAD LOUNGE

CATALINA QL 2585

THE **ART**
OF THE *Pontoon*



REAR LOUNGE

CATALINA SIGNATURE COLLECTION

CATALINA RL 2585



Avalon

CATALINA



Avalon
LUXURY PONTOON BOATS

CATALINA ENTERTAINER



CATALINA ENT 2585



THE **ART** OF THE *Pontoon*

REAR J LOUNGE

CATALINA SIGNATURE COLLECTION



CATALINA RJ 2385

Avalon
LUXURY PONTOON BOATS

CATALINA CRUISE FUNSHIP



THE **ART**
OF THE *Pontoon*

CATALINA CRFS 2585



QUAD FISH

CATALINA SIGNATURE COLLECTION



CATALINA QF 2385



Avalon
LUXURY PONTOON BOATS

CATALINA REAR FISH

CATALINA RF 2385



CATALINA RF 2585



THE ART OF THE *Pontoon*
OF THE



STANDARD FEATURES

CATALINA MASTER COLLECTION

- Ensign II fiberglass helmstand with soft touch black recessed dash and Greywood accents
- Captain fiberglass helmstand with Greywood dash panel (QF and RF only)
- Tach, volt, fuel gauges
- GPS speedometer
- Garmin Striker 5CV color fish finder/depth finder (QF and RF only)
- Infinity PRV315BT stereo
- USB and auxiliary input
- (4) Infinity stereo speakers INF622MB with chrome grill
- 12-volt power point
- Steering – mechanical tilt (except CRFS)
- Steering – Baystar hydraulic tilt (CRFS only)
- Black soft-grip steering wheel with chrome spokes
- Bimini top with 1 1/4" square anodized aluminum frame, stainless steel quick-release Bimini mounts and transport position brackets
- Removable windshield
- Deco 3 external multi-panel retro walls
- Interior composite wall panels (except QF and RF)
- Mirror chrome logos
- Gate with SST EZ lift latch
- Rear stainless steel telescoping ladder
- Courtesy light on helmstand
- Exterior navigation/docklight combo
- USCG navigation lights
- Commander low-back reclining driver's chair with self-leveling arms
- Chair adjustment slider, front, back, rotate
- Greywood large kidney thermoform table (CR, CRFS, EL, QF, RF only)
- Greywood rectangle thermoform table (ENT, QL, RL only)

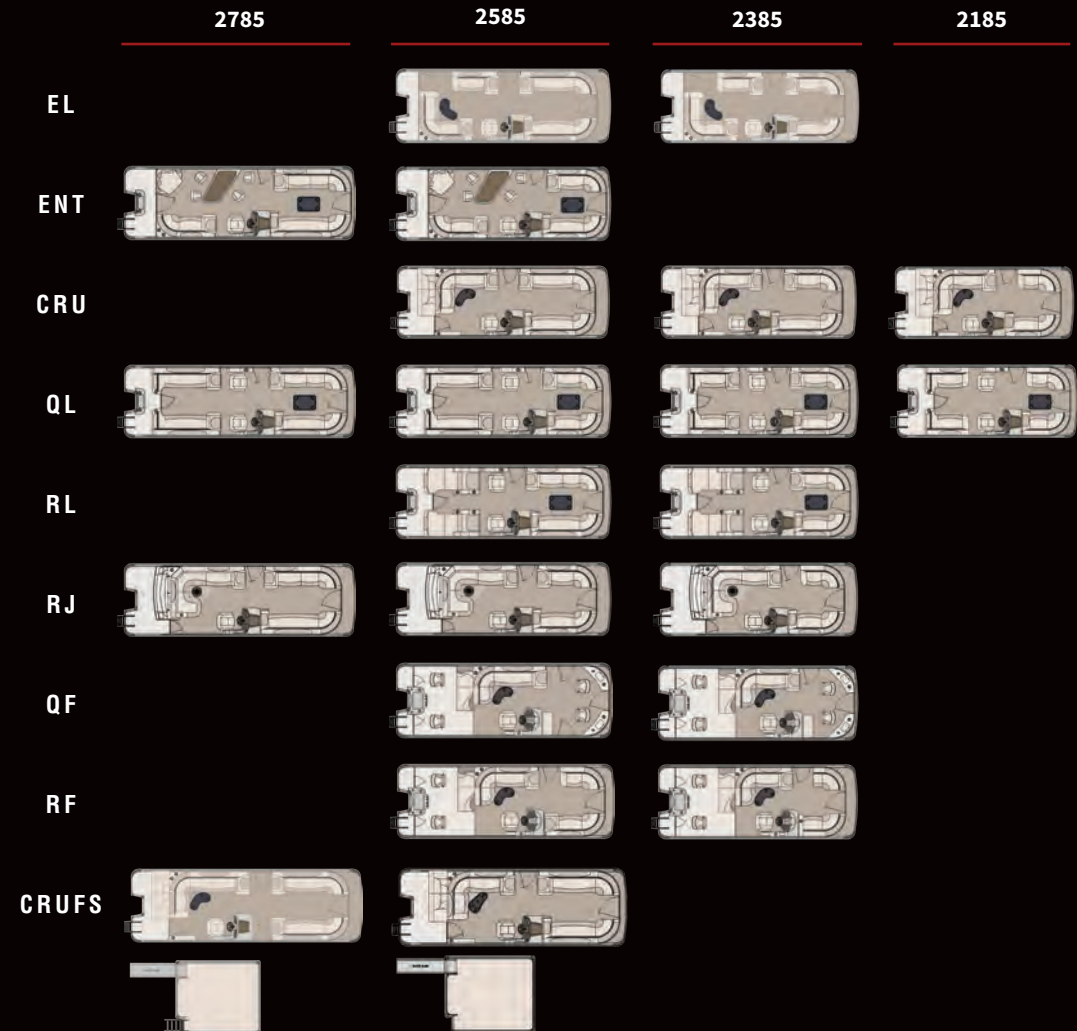
- Smoked glass round cocktail table with wine glass cutouts and SST cup holders (RJ only)
- Privacy station curtain and frame (n/a 21' QL and 23' RJ)
- Suspension seating
- Lounge arms with storage (based on floorplans)
- Lifetime aluminum seat frames with flow-through ventilation
- Decorative color-matched seat frame cladding

- Movable cup holders with stainless cup holders (2)
- Stainless steel cup holders
- Vinyl rear deck with deco carpet on remainder
- Livewell in front of Captain stand (QF only)
- Rear fishing center with rod holders and livewell (QF and RF only)
- Tackle trays with rear sink and access door (QF and RF only)
- 25" transom (standard on CRFS only)
- Deck corner impact protection – aluminum

- Tapered front deck
- Extended rear deck
- Pontoon double full risers
- 3" Rub rail with black rubber insert
- (4) Stainless U-bolt and cleat combo
- Vinyl nonskid strips for entry gates
- Fuel 32-gallon capacity (CR and CRFS only)
- Fuel 29-gallon capacity remote fill transom mount (except CR, CRFS)
- SST gas cap and vent
- (2) – 27" Pontoons (CRFS only – n/a any other model)

CATALINA	Length Class	Boat Length Overall	Deck Length	Pontoon Diameter	Width	Dry Weight	Max Weight Capacity	Max Persons Pounds	Max Number Persons	Max Engine HP
2185 25"	21	21' 5"	21' 3"	25"	8.5'	1,850	2,035	1,300	10	115
2185 25" EP	21	21' 5"	21' 3"	25" x 3	8.5'	2,040	2,035	1,300	10	115
2185 25" SP	21	22' 6"	21' 3"	25" x 3	8.5'	2,750	2,240	1,710	10	175
2185 25" WG	21	22' 6"	21' 3"	25" x 3	8.5'	2,750	2,240	1,710	10	175
2385 25"	23	23' 5"	23' 3"	25"	8.5'	2,150	2,150	1,540	11	125
2385 25" EP	23	23' 5"	23' 3"	25" x 3	8.5'	2,450	2,150	1,540	11	150
2385 25" SP	23	24' 6"	23' 3"	25" x 3	8.5'	2,900	2,560	1,600	12	200
2385 25" WG	23	24' 6"	23' 3"	25" x 3	8.5'	2,900	2,560	1,600	12	250
2585 25"	25	25' 5"	25' 3"	25"	8.5'	2,450	2,430	1,770	13	135
2585 25" EP	25	25' 5"	25' 3"	25" x 3	8.5'	2,650	2,650	1,770	13	150
2585 25" SP	25	26' 6"	25' 3"	25" x 3	8.5'	3,100	2,825	2,015	14	200
2585 25" WG	25	26' 6"	25' 3"	25" x 3	8.5'	3,100	2,825	2,015	14	250
2785 25"	27	27' 5"	27' 3"	25"	8.5'	2,650	2,675	2,015	14	150
2785 25" EP	27	27' 5"	27' 3"	25" x 3	8.5'	3,050	2,625	2,015	14	150
2785 25" SP	27	28' 6"	27' 3"	25" x 3	8.5'	3,300	3,120	2,310	15	200
2785 25" WG	27	28' 6"	27' 3"	25" x 3	8.5'	3,300	3,120	2,310	15	300

CATALINA FUNSHIP	Length Class	Boat Length Overall	Deck Length	Pontoon Diameter	Width	Dry Weight	Max Weight Capacity	Max Persons Pounds	Max Number Persons	Max Engine HP
2585 27"	25	25' 5"	25' 3"	27"	8.5'	3,300	2,590	1,665	11	150
2785 27"	27	27' 5"	27' 3"	27"	8.5'	3,500	2,730	1,805	12	150



AVALON LSZ CRUISE



AVALON LSZ CR 2285

THE **ART**
OF THE *Pontoon*



AVALON LSZ CRUISE REAR BENCH/CRUISE II

AVALON LSZ SIGNATURE COLLECTION



AVALON LSZ CRUISE II 2085



Avalon LUXURY PONTOON BOATS

AVALON LSZ CRB 2085

AVALON LSZ ELITE - WINDSHIELD



AVALON LSZ EL-W 2485



AVALON LSZ EL-W 2485



THE **ART**
OF THE *Pontoon*



ENTERTAINER

AVALON LSZ SIGNATURE COLLECTION



AVALON LSZ ENT 2485

Avalon
LUXURY PONTOON BOATS

AVALON LSZ QUAD LOUNGE



AVALON LSZ QL 2485

THE **ART**
OF THE *Pontoon*



REAR LOUNGE

AVALON LSZ SIGNATURE COLLECTION

AVALON LSZ RL 2485



Avalon
LUXURY PONTOON BOATS

AVALON LSZ QUAD FISH & REAR FISH

AVALON LSZ RF 2485

AVALON LSZ QF 2085

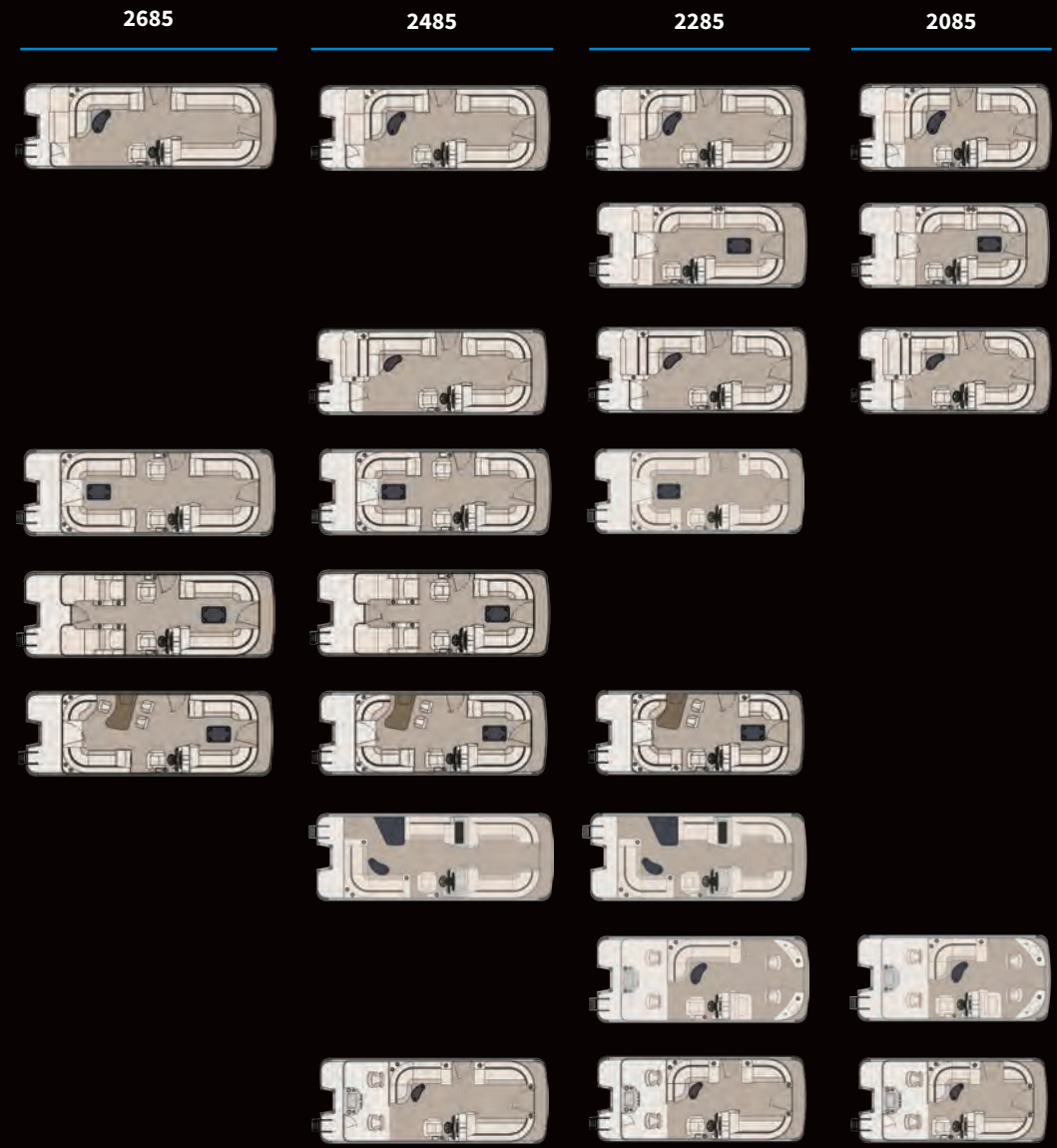
THE **ART** OF THE *Pontoon*

BOATS SHOWN MAY SHOW OPTIONAL EQUIPMENT.



STANDARD FEATURES

- Cadet fiberglass helmstand with Greywood dash panels (except EL-W)
- Cadet Rotocast helmstand with full windshield and Greywood dash panels (standard on EL-W only)
- Tach, volt, fuel gauges
- Infinity PRV250BT stereo
- (4) Stereo speakers MILSPK652BS silver
- 12-volt power point
- Steering – mechanical tilt
- Black soft-grip steering wheel
- Removable windshield (except EL-W)
- Deco 4 external multi-panel walls
- Flat graphic logos
- Gate with lift-n-lay latch
- Rear stainless steel telescoping ladder
- Courtesy light on helmstand
- USCG navigation lights
- Captain deluxe driver's chair with rotating arms
- Chair adjustment slider, front, back, rotate
- Greywood small kidney thermoform table (standard on CR, CRB, QF and RF)
- Greywood rectangle thermoform table (except CR, CRB, QF and RF)
- Exclusive Matrix 50 soft touch seat vinyl
- Suspension seating
- Lounge arms with storage (based on floorplans)
- Lifetime aluminum seat frames with flow-through ventilation
- Decorative color-matched seat frame cladding
- Stainless steel cup holders
- Vinyl rear deck with deco carpet on remainder
- Bimini top with 1 1/4" square anodized aluminum frame, stainless steel quick-release Bimini mounts and transport position brackets
- Livewell in front of Captain stand (QF only)
- Rear fishing center with rod holders and livewell (QF and RF only)
- Deck corner impact protection – aluminum
- Tapered front deck
- Extended rear deck
- Pontoon double full risers
- 3" Rub rail with black rubber insert
- (4) Stainless U-bolt and cleat combo
- Vinyl nonskid strips for entry gates
- Fuel 24-gallon capacity (CR only)
- Fuel 29-gallon capacity direct fill transom mount (except CR and EL-W)
- Fuel 38-gallon direct fill in center pontoon (EL-W only)
- SST gas cap and vent (CR only)



AVALON LSZ	Length Class	Boat Length Overall	Deck Length	Pontoon Diameter	Width	Dry Weight	Max Weight Capacity	Max Persons Pounds	Max Number Persons	Max Engine HP
2085 25"	20	19' 5"	19' 3"	25"	8.5'	1,650	1,750	1,225	9	90
2085 X 3 25" EP	20	19' 5"	19' 3"	25" x 3	8.5'	1,880	1,750	1,225	9	90
2085 X 3 25" SP	20	20' 6"	19' 3"	25" x 3	8.5'	1,950	2,100	1,440	10	115
2085 X 3 25" WG	20	20' 6"	19' 3"	25" x 3	8.5'	1,950	2,100	1,440	10	115
2285 25"	22	21' 5"	21' 3"	25"	8.5'	1,800	2,035	1,380	10	115
2285 X 3 25" EP	22	21' 5"	21' 3"	25" x 3	8.5'	2,030	2,035	1,380	10	115
2285 X 3 25" SP	22	22' 6"	21' 3"	25" x 3	8.5'	2,200	2,370	1,710	12	175
2285 X 3 25" WG	22	22' 6"	21' 3"	25" x 3	8.5'	2,200	2,370	1,710	12	175
2485 25"	24	23' 5"	23' 3"	25"	8.5'	2,050	2,260	1,600	11	125
2485 X 3 25" EP	24	23' 5"	23' 3"	25" x 3	8.5'	2,250	2,260	1,600	11	150
2485 X 3 25" SP	24	24' 6"	23' 3"	25" x 3	8.5'	2,800	2,580	1,780	12	200
2485 X 3 25" WG	24	24' 6"	23' 3"	25" x 3	8.5'	2,800	2,580	1,780	12	225
2685 25"	26	25' 5"	25' 3"	25"	8.5'	2,250	2,505	1,845	13	135
2685 X 3 25" EP	26	25' 5"	25' 3"	25" x 3	8.5'	2,470	2,505	1,845	13	150
2685 X 3 25" SP	26	26' 6"	25' 3"	25" x 3	8.5'	3,000	2,850	1,850	15	200
2685 X 3 25" WG	26	26' 6"	25' 3"	25" x 3	8.5'	3,000	2,850	1,850	15	250

Avalon
LUXURY PONTOON BOATS

AVALON GS

CRUISE/CRUISE II

AVALON GS CR 2385



AVALON GS CR II 2185



THE ART OF THE *Pontoon*
OF THE



AVALON GS CENTER CONSOLE FISH

AVALON GS SIGNATURE COLLECTION

AVALON GS CCF 2385



AVALON GS CCF 2585

Avalon
LUXURY PONTOON BOATS

AVALON GS

QUAD FISH & REAR FISH



AVALON GS QF 2185



AVALON GS RF 2385

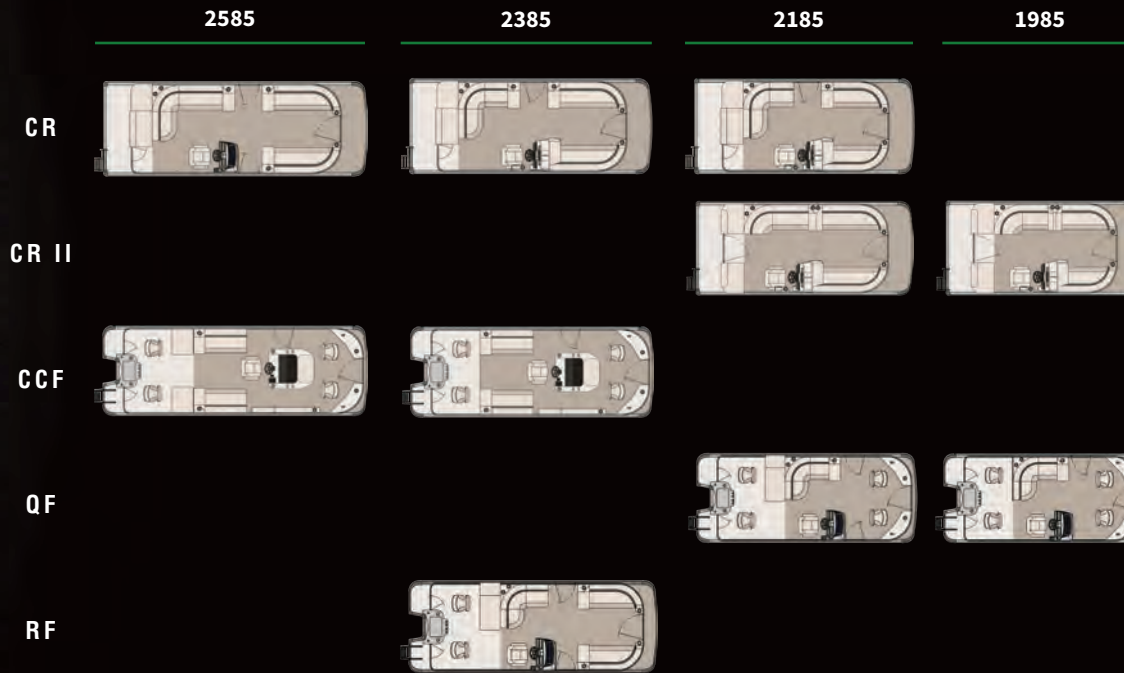


THE **ART** OF THE *Pontoon*



STANDARD FEATURES

AVALON GS SIGNATURE COLLECTION



- Cadet Rotocast helmstand with Greywood dash panels (except QF, RF, and 25' CR and CCF)
- Mate Rotocast helmstand with Greywood dash panel (standard on QF, RF and 25' CR only)
- Center console fiberglass helmstand with Greywood dash panels (CCF only)
- Tach, volt, fuel gauges
- Garmin Striker 5CV color fish finder/depth finder (standard on CCF only)
- Infinity PRV250BT stereo
- (2) Stereo speakers MILSPK652BS silver
- 12-volt power point
- Steering – Baystar hydraulic tilt (standard on CCF only)
- Steering – mechanical standard (no tilt) (except CCF)
- Viper steering wheel
- Traditional external lock stripped single panel walls
- Flat graphic logos
- Gate with SST reinforced twist latch
- Rear starboard stainless ladder (QF, RF and CCF only)
- Rear starboard aluminum ladder (except QF, RF and CCF)
- Courtesy light on helmstand
- USCG navigation lights
- Cadet fixed-back driver's chair
- Chair adjustment slider, front, back, rotate
- Exclusive Matrix 50 soft touch seat vinyl
- Suspension seating
- Lounge arms with storage (based on floorplans)
- Lifetime aluminum seat frames with flow-through ventilation
- Decorative color-matched seat frame cladding
- Stainless steel cup holders
- Vinyl rear deck with deco carpet on remainder
- Rod box (standard on CCF only)
- Tackle trays with rear sink and access door (standard on CCF only)
- Bimini top with 1 1/4" square anodized aluminum frame, stainless steel quick-release Bimini mounts and transport position brackets
- 25" Express tube with high-performance lifting fins and aluminum Waveshield (standard on CCF only)
- Deck corner impact protection – aluminum
- Extended rear deck (QF, RF and CCF only)
- Tapered front deck
- Pontoon double full risers
- 3" Rub rail with black rubber insert
- (4) Stainless U-bolt and cleat combo
- Vinyl nonskid strips for entry gates
- Fuel 29-gallon capacity direct fill transom mount

AVALON GS	Length Class	Boat Length Overall	Deck Length	Pontoon Diameter	Width	Dry Weight	Max Weight Capacity	Max Persons Pounds	Max Number Persons	Max Engine HP
1985 23"	19	19' 5"	19' 3"	23"	8.5'	1,650	1,610	1,050	8	75
1985 25" EP	19	19' 5"	19' 3"	25" X 3	8.5'	1,880	1,750	1,225	9	90
1985 25" SP	19	20' 6"	19' 3"	25" X 3	8.5'	1,950	2,100	1,440	10	115
1985 25" WG	19	20' 6"	19' 3"	25" X 3	8.5'	1,950	2,100	1,440	10	115
2185 25"	21	21' 5"	21' 3"	25"	8.5'	1,850	2,035	1,300	10	115
2185 25" EP	21	21' 5"	21' 3"	25" x 3	8.5'	2,040	2,035	1,300	10	115
2185 25" SP	21	22' 6"	21' 3"	25" x 3	8.5'	2,750	2,240	1,710	10	175
2185 25" WG	21	22' 6"	21' 3"	25" x 3	8.5'	2,750	2,240	1,710	10	175
2385 25"	23	23' 5"	23' 3"	25"	8.5'	2,150	2,150	1,540	11	125
2385 25" EP	23	23' 5"	23' 3"	25" x 3	8.5'	2,450	2,150	1,540	11	150
2385 25" SP	23	24' 6"	23' 3"	25" x 3	8.5'	2,900	2,560	1,600	12	200
2385 25" WG	23	24' 6"	23' 3"	25" x 3	8.5'	2,900	2,560	1,600	12	250
2585 25"	25	25' 5"	25' 3"	25"	8.5'	2,450	2,430	1,770	13	135
2585 25" EP	25	25' 5"	25' 3"	25" x 3	8.5'	2,650	2,650	1,770	13	150
2585 25" SP	25	26' 6"	25' 3"	25" x 3	8.5'	3,100	2,825	2,015	14	200
2585 25" WG	25	26' 6"	25' 3"	25" x 3	8.5'	3,100	2,825	2,015	14	250

Avalon
LUXURY PONTOON BOATS

AVALON LS

CRUISE REAR BENCH



AVALON LS CRB 2080



AVALON LS CRB 2480



THE **ART** OF THE *Pontoon*



AVALON LS QUAD LOUNGE/ENTERTAINER

AVALON LS BOUTIQUE COLLECTION 8' WIDTH

AVALON LS QL 2480



AVALON LS ENT 2480



Avalon
LUXURY PONTOON BOATS

AVALON LS

REAR FISH/BOW FISH

AVALON LS RF 2080



AVALON LS BF 1880



THE **ART** OF THE *Pontoon*



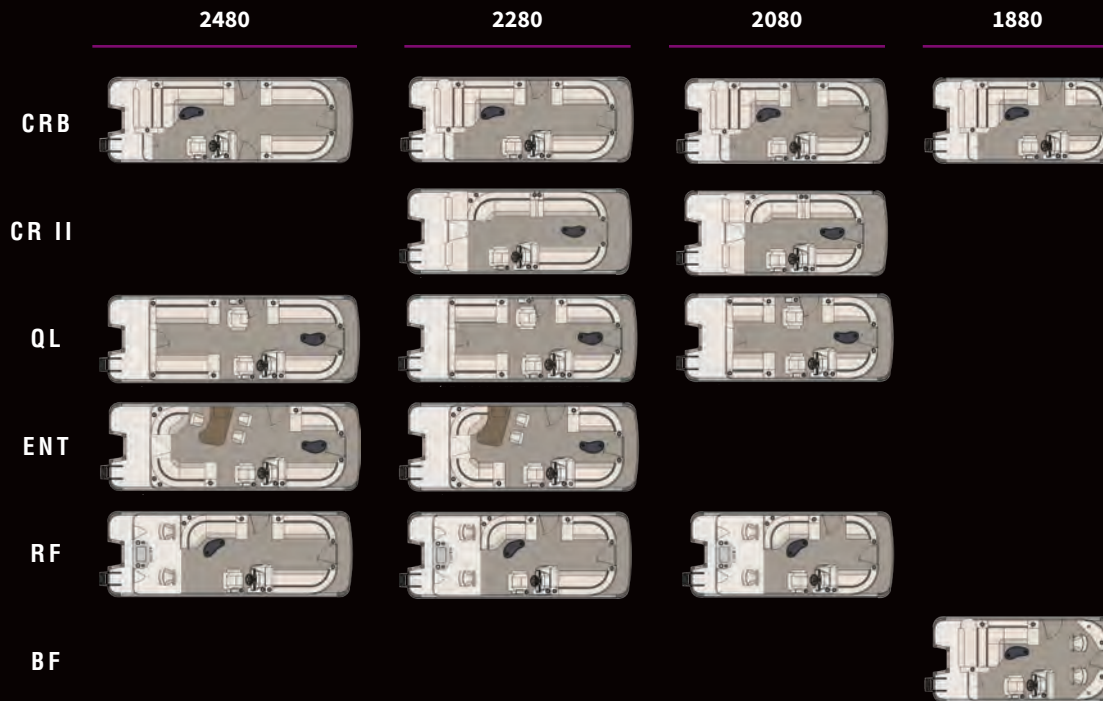
STANDARD FEATURES

AVALON LS BOUTIQUE COLLECTION
8' WIDTH

AVALON LS	Length Class	Boat Length Overall	Deck Length	Pontoon Diameter	Width	Dry Weight	Max Weight Capacity	Max Persons Pounds	Max Number Persons	Max Engine HP
1880	18	17' 5"	17' 3"	23"	8'	1,350	1,350	950	6	50
1880 X 3 23" SP	18	18' 6"	17' 3"	23" x 3	8'	1,600	1,650	1,100	8	75
1880 X 3 23" WG	18	18' 6"	17' 3"	23" x 3	8'	1,600	1,650	1,100	8	75
2080 23"	20	19' 5"	19' 3"	23"	8'	1,600	1,575	1,050	7	75
2080 X 3 23" SP	20	20' 6"	19' 3"	23" x 3	8'	1,875	1,850	1,290	9	100
2080 X 3 23" WG	20	20' 6"	19' 3"	23" x 3	8'	1,875	1,850	1,290	9	100
2280 23"	22	21' 5"	21' 3"	23"	8'	1,750	1,805	1,250	9	90
2280 X 3 23" SP	22	22' 6"	21' 3"	23" x 3	8'	2,150	2,080	1,400	10	115
2280 X 3 23" WG	22	22' 6"	21' 3"	23" x 3	8'	2,150	2,080	1,400	10	115
2480 23"	24	23' 5"	23' 3"	23"	8'	2,000	2,000	1,450	10	90
2480 X 3 23" SP	24	24' 6"	23' 3"	23" x 3	8'	2,300	2,390	1,400	10	115
2480 X 3 23" WG	24	24' 6"	23' 3"	23" x 3	8'	2,300	2,390	1,400	10	200
2680 23"	26	25' 5"	25' 3"	23"	8'	2,250	2,505	1,845	13	115
2680 X 3 23" SP	26	26' 6"	25' 3"	23" x 3	8'	3,000	2,850	2,040	15	150
2680 X 3 23" WG	26	26' 6"	25' 3"	23" x 3	8'	3,000	2,850	2,040	15	250

- Cadet II fiberglass helmstand with Greywood dash panels
- Tach, volt, fuel gauges
- 12-volt power point
- Infinity PRV250BT stereo
- (4) Stereo speakers MILSPK652BS silver
- Steering – mechanical standard (no tilt)
- Viper steering wheel
- Removable windshield
- Traditional external lock stripped single panel walls
- Flat graphic logos
- Gate with SST reinforced twist latch
- Rear stainless steel telescoping ladder
- Courtesy light on helmstand
- USCG navigation lights
- Cadet fixed-back driver's chair
- Chair adjustment slider, front, back, rotate

- Greywood small kidney thermoform table
- Livewell in bench (standard on BF only)
- Exclusive Matrix 50 soft touch seat vinyl
- Suspension seating
- Lounge arms with storage (based on floorplans)
- Lifetime aluminum seat frames with flow-through ventilation
- Decorative color-matched seat frame cladding
- Stainless steel cup holders
- Vinyl rear deck with deco carpet on remainder
- Rear fishing center with rod holders and livewell (QF and RF only)
- Bimini top with 1 1/4" square anodized aluminum frame, stainless steel quick-release Bimini mounts and transport position brackets
- Double-bolted hat channel crossbeams
- Deck corner impact protection – aluminum
- Tapered front deck
- Extended rear deck
- Pontoon double full risers
- 3" Rub rails with built-in bumper
- (4) Stainless U-bolt and cleat combo



Avalon
LUXURY PONTOON BOATS

VENTURE

CRUISE / FISH N CRUISE / QUAD LOUNGE

VENTURE FNC 2080

VENTURE CR 2080

THE **ART**
OF THE *Pontoon*



VENTURE QL 1875



VENTURE CR 1875



Avalon
LUXURY PONTOON BOATS

VENTURE

CRUISE REAR BENCH/BOW FISH



VENTURE CRB 1475



VENTURE BF 1680



THE **ART** OF THE *Pontoon*



REAR FISH/QUAD FISH

VENTURE BOUTIQUE
COLLECTION
7.5' & 8' WIDTHS



VENTURE RF 1875



VENTURE QF 1675

Avalon
LUXURY PONTOON BOATS

VENTURE

STANDARD FEATURES



- Cadet II fiberglass helmstand with Greywood dash panels
- Tach, volt, fuel gauges
- Removable windshield
- Infinity PRV250BT stereo
- (4) Stereo speakers MILSPK652BS silver
- 12-volt power point
- Steering – mechanical standard (no tilt)
- Viper steering wheel
- Heritage external lock stripped single panel 90° walls
- Flat graphic logos
- Gate with SST reinforced twist latch
- Rear starboard aluminum ladder
- Courtesy light on helmstand
- USCG navigation lights
- Cadet fixed-back driver's chair
- Chair adjustment slider, front, back, rotate
- Greywood small kidney thermoform table
- Livewell in bench (BF and CRB only)
- Rear fishing center with rod holders and livewell (FNC, QF, RF)
- Exclusive Matrix 50 soft touch seat vinyl
- Suspension seating
- Lifetime aluminum seat frames with flow-through ventilation
- Decorative color-matched seat frame cladding
- Stainless steel cup holders
- Vinyl rear deck with deco carpet on remainder
- Bimini top with 1 1/4" square anodized aluminum frame, stainless steel quick-release Bimini mounts and transport position brackets
- Pontoon double full risers
- Deck corner impact protection – aluminum
- 3" Rub rails with built-in bumper
- (4) Stainless U-bolt and cleat combo
- Tapered front deck
- Lounge arms with storage (except 14')
- 7.5' Wide (14', 16', 18')
- 8' Wide (20')

VENTURE	Length Class	Boat Length Overall	Deck Length	Pontoon Diameter	Width	Dry Weight	Max Weight Capacity	Max Persons Pounds	Max Number Persons	Max Engine HP
1475	14	15' 5"	14'	23"	7.5'	1,150	1,170	800	5	40
1475 X 3 23" CP	14	16' 6"	14'	23" x 3	7.5'	1,400	1,360	840	6	60
1675	16	17' 5"	16'	23"	7.5'	1,350	1,350	950	6	50
1675 X 3 23" CP	16	18' 6"	16'	23" x 3	7.5'	1,600	1,650	1,100	8	75
1875	18	19' 5"	18'	23"	7.5'	1,600	1,575	1,050	7	75
1875 X 3 23" CP	18	20' 6"	18'	23" x 3	7.5'	1,875	1,850	1,290	9	90
2080 23"	20	21' 5"	20'	23"	8'	1,750	1,805	1,250	9	90
2080 X 3 23" CP	20	22' 6"	20'	23" x 3	8'	2,150	2,080	1,400	10	115



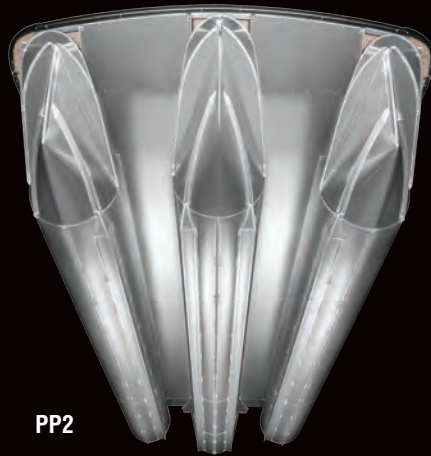
PERFORMANCE & WATERSPORTS



PP1

25" EXPRESS PONTOON PACKAGE

Recommended for those desiring a 115 HP OR LESS equipped boat with increased wave and weight handling as well as improved speed. Includes only two fins on the center pontoon, standard motor pod, wave shield and Baystar hydraulic steering (does not include a ski tow bar).



PP2

25" SPORT PERFORMANCE PONTOON PACKAGE

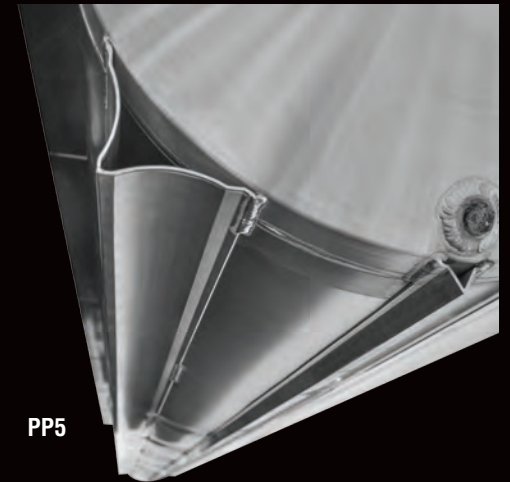
Recommended for those desiring an economical 150 HP - 200 HP equipped boat with very good weight and wave handling as well as very good performance. Includes integrated motor pod, 38-gallon transom direct fill fuel tank, 4 lifting fins, wave shield and SeaStar hydraulic steering (does not include a ski tow bar). MAXIMUM HP RATING IS 200 HP.



PP3

25" OR 27" WAVEGLIDER PACKAGE

Recommended for those desiring maximum weight and wave handling, maximum speed and performance, maximum HP and maximum performance features. Includes integrated motor pod, 58-gallon built-in fuel tank, 6 lifting fins, wave shield, ski tow bar and SeaStar hydraulic steering.



PP5

			EXCALIBUR	AMBASSADOR	CATALINA PLATINUM	CATALINA	LSZ	GS	LS	VENTURE
WATERSPORTS	GX arch	WS1	0	•	•	•	•	•	•	•
	Decosport arch	WS2	•	0	0	0	0	0	•	•
	Decosport tower	WS3	•	0	0	0	0	0	•	•
	Wakeboard tower	WS4	•	0	0	0	0	0	0	0
	Ski tow bar	WS5	S	S	W FS	0	W	0	0	0
	In-floor storage for triple pontoons	WS6	0	0	0	0	0	0	•	•
PONTOON PACKAGES	25" Express pontoon package	PP1	•	•	0+<	0+	0	CCF	0	0
	25" Sport performance pontoon package	PP2	•	•	0+<	0	0 W	0	0	0
	25" Waveglider package	PP3	•	•	0 W	0+	0	0	0	0
	27" Waveglider package	PP3	S	S	0 FS	0	0	0	•	•
	Twin engine package	PP4	0	0	0	•	•	•	•	•
	HPP lifting fins	PP5	S	S	W/FS	FS	0 W	CCF	0	0
	25" transom	-	0	0 FS	0 FS	0 FS	0	0	0	•

0 = Option
 S = Standard
 • = Not an option
 W = Standard on windshield models
 < = Except windshield

* = Varies depending on floor plan
 F = Fish models only
 CCF = Standard on CCF Fish model only
 FS = Option - But standard on Funship models
 + = Except Funship



PP4



WS1



WS2



WS3



WS4



WS5



WS6

FEATURES & OPTIONS

		EXCALIBUR	AMBASSADOR	CATALINA PLATINUM	CATALINA	LSZ	GS	LS	VENTURE
HELMSTANDS	Admiral with refrigerator, sink, electric wine rack analog dash	H1	•	27'	0	0	•	•	•
	Commander	H2	•	25&E	0	0	•	•	•
	Commander W	H3	S	W	W	•	•	•	•
	Captain	H4	•	•	•	F	0	0	0
	Ensign 2	H5	•	•	S	S	•	•	•
	Cadet fiberglass	H6	•	•	•	•	S	0	•
	Cadet Roto	H7	•	•	•	•	•	S	0
	Cadet 2 fiberglass	H8	•	•	•	•	0	0	S
	Cadet Roto W	H9	•	•	•	•	W	•	•
	Mate Roto	H10	•	•	•	•	•	•	++
	Center console fiberglass	H11	•	•	•	•	•	CC	•
ELECTRONICS	Touch screen dash and stereo for Admiral and Commander	EL1	S	0	#	#	•	•	•
	Analog dash	EL2	0	S	S	S	S	S	S
	USB/Aux. inputs	EL3	S	S	S	S	0	0	0
	JL Mediamaster 50BT Stereo with JL 4-channel amp	EL4	S	S	0	0	0	0	0
	Infinity 300 Series Bluetooth stereo	EL5	0	0	S	S	0	0	0
	Infinity 200 Series Bluetooth stereo	EL6	•	•	•	•	S	S	S
	Premium JL lighted speakers	EL7	6	6	0	0	0	0	0
	Deluxe Infinity speaker	EL8	•	•	4**	4	0	0	0
	Standard Millenia speaker	EL9	•	•	•	•	4	2	4
	JL Premium sound system with sub and amp	EL10	0	0	0	0	0	0	0
	High-performance sound system with sub and amp	EL11	•	•	0	0	0	0	0
	GPS Garmin 53CV in dash	EL12	S	S	W	0	•	•	0
	GPS Garmin 43CV Gimble mount	EL13	•	•	•	•	0	0	0
	Fishfinder Garmin 5CV in dash	EL14	•	•	S	F	0*	CCM	0
	Fishfinder Garmin 4CV Gimble mount	EL15	•	•	•	0	0	0	•
LIGHTING	Interior mood lights	L1	S	S	S	0	0	0	0
	Lighted speaker rings	EL8	S	S	S	0	0	0	0
	RGB Multi-color lighting system	L2	S	•	•	•	•	•	•
	LED accent chrome docklights built in	L3	•	S	S	0	0	0	•
	LED accent black docklights built in	L4	•	0	0	0	0	0	•
	Lighted wall mount black air vents	L4	•	0	0	0	•	•	•
	Docklight/navigation light combo external	L5	•	•	•	S	0	0	•
	Under rub rail lights	L6	S	0	0	0	0	0	0
	Rear underwater lights	L7	0	0	0	0	0	0	0
Blue Ice package	L8	•	•	•	•	0	0	0	
HELM CHAIRS	Admiral	CH 1	S	S	S	0	0	0	•
	King	CH 2	0	0	0	0	0	0	•
	Commander	CH 3	•	•	•	S	0	0	0
	Captain	CH 4	•	•	•	•	S	0	0
	Cadet Chair	CH 5	•	•	•	•	•	S	S
	Adjustable height helm chair pedestal	CH 6	S	OW	OW	0	0	0	0
TOPS	D-rail anodized Bimini frame	TP1	0	0	S	•	•	•	•
	D-rail blackout Bimini Frame	TP2	S	S	0	•	•	•	•
	Square anodized Bimini frame	TP3	•	•	•	S+	S	S	S
	Square blackout Bimini frame	TP4	•	•	•	0+	0	0	0
	Bow Bimini	TP5	0	0	0	0	0	0	•
	Bimini for Funship roof	TP6	•	FS	FS	FS	•	•	•
	Electric rear Bimini	TP7	0	0+	0+	0+	0	0	•

0 = Option
 S = Standard
 • = Not an option
 W = Standard on windshield models

0* = Optional on windshield only
 OW = Option but standard on windshield model
 CCM = Option ONLY on center console and Mate helms
 # = Requires upgrade to Commander or Admiral stand

++ = GS - 25' Cruise, QF and RF only
 ** = 6 on Funship, EL-W and QL-W
 + = Except Funship
 F = Fish models only





FEATURES & OPTIONS



FEATURES & OPTIONS

		EXCALIBUR	AMBASSADOR	CATALINA PLATINUM	CATALINA	LSZ	GS	LS	VENTURE
TABLES	Rectangular smoked glass table	T1	S*	S*	0	0	0	0	0
	Curved smoked glass table	T2	S*	S*	S*	0	0	0	0
	Round smoked glass table	T3	0	0	0	0	0	0	0
	Cocktail smoked glass table	T4	S*	S*	S*	S*	0	0	0
	Small kidney Greywood table	T5	•	•	•	•	S*	0	S
	Large kidney Greywood table	T6	•	•	•	S*	0	0	0
	Large rectangle Greywood table	T7	•	•	•	S*	S*	0	0
FURNISHINGS	Movable cupholder - Deco	FN1	S	S	S	0	0	0	0
	Movable cupholder - SST cups	FN2	•	•	•	S	0	0	0
	Lighted cup holders - fixed	FN3	S	S	S	0	0	0	0
	Filler bench for front gate	FN4	0	0	0	0	0	•	•
	Ottoman cooler	FN5	0	0	0	0	0	0	•
	Floor matting under bench	FN6	S	S	S	0	0	0	0
	Privacy curtain (various locations)	FN7	S	S	S	S	0	0	0
	SST vent covers for seat cladding	FN8	S	S	S	0	0	0	0
	Deco cladding	FN9	S	S	S	•	•	•	•
	Decorative seat cladding	FN10	•	•	•	S	S	S	S
	Trash can under lounge arm	FN11	S*	S*	S*	0*	0*	•	•
VINYL FLOORING	Infinity Brushstroke classic Beige	VF1	S	S	0	0	0	0	0
	Infinity Brushstroke classic Silver	VF2	S	S	0	0	0	0	0
	Teak-style UV classic Woodgrain	VF3	0	0	0	0	0	0	0
	Teak-style UV classic Silver	VF4	0	0	0	0	0	0	0
	Teak-style Soft BTT Woodgrain	VF5	0	0	R	0	0	0	0
	Teak-style soft BTT Silver	VF6	0	0	R	0	0	0	0
	Compass Luna soft woven Beige	VF7	0	0	0	0	0	0	0
	Compass Luna soft woven Silver	VF8	0	0	0	0	0	0	0
	ATD classic	VF9	0	0	0	0	0	0	0
	Traditional classic Taupe	VF10	0	0	0	R	R	R	R
	Traditional classic Gray	VF11	0	0	0	R	R	R	R
CARPET	Deco carpet floor with vinyl rear deck	CP1	•	•	S	S	S	S	S
	Snap-in carpet for vinyl floor	CP2	0	0	0	0	0	0	0
	Snap-in carpet runner for vinyl floor	CP3	0	0	0	0	0	0	0
CANVAS	Mooring cover	CV1	S	S	S	0	0	•	•
	Playpen cover	CV2	•	•	•	•	•	0	0
	Seat covers	CV3	0	0	0	0	0	0	0
	Full camper enclosure	CV4	0*	0*	0*	0*	0*	0*	•
	1/2 camper enclosure	CV5	0	0	0	0	0	0	0*
ENTERTAINER	Stationary lighted Bistro table with booth seating	E1	•	E*	E	•	•	•	•
	Bar with built-in cooler and bar stools	E2	•	E*	E	•	•	•	•
	Stationary bar table	E3	•	•	•	•	E	•	•
	Starboard full galley with refrigerator and sink	E4	•	E*	•	•	•	•	•
	Port rear prep center	E5	•	E*	•	•	•	•	•
	Port rear storage cabinet	E6	•	•	•	E	•	•	•
	Port rear prep center with refrigerator and sink	E7	ELW	ELW	ELW	•	•	•	•
	Port rear prep center with sink and cooler	E8	•	•	•	•	ELW	•	•
WALLS	ATI walls	W1	S	S	•	•	•	•	•
	Composite interior wall covers	W2	S	S	S	S	•	•	•
	Blackout wall railings	W3	•	•	0	0	0	0	0

0 = Option
S = Standard

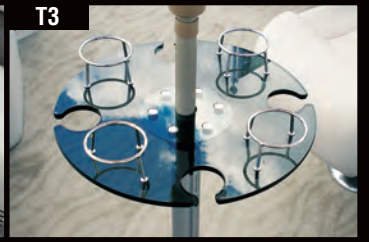
• = Not an option
* = Varies depending on floor plan



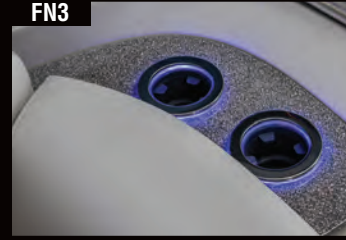
T1



T2



T3



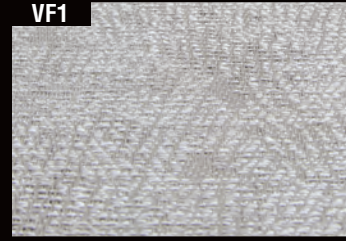
FN3



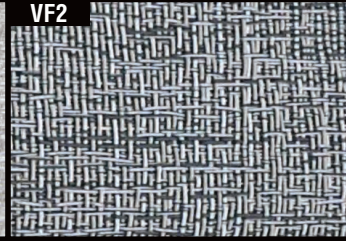
FN4



FN5



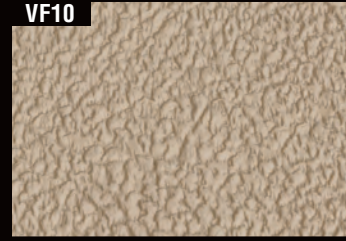
VF1



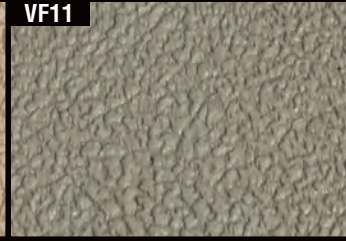
VF2



VF3



VF10



VF11



CP1



CV5



E1



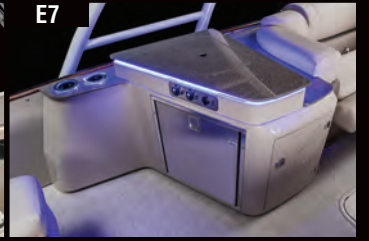
E2



E5



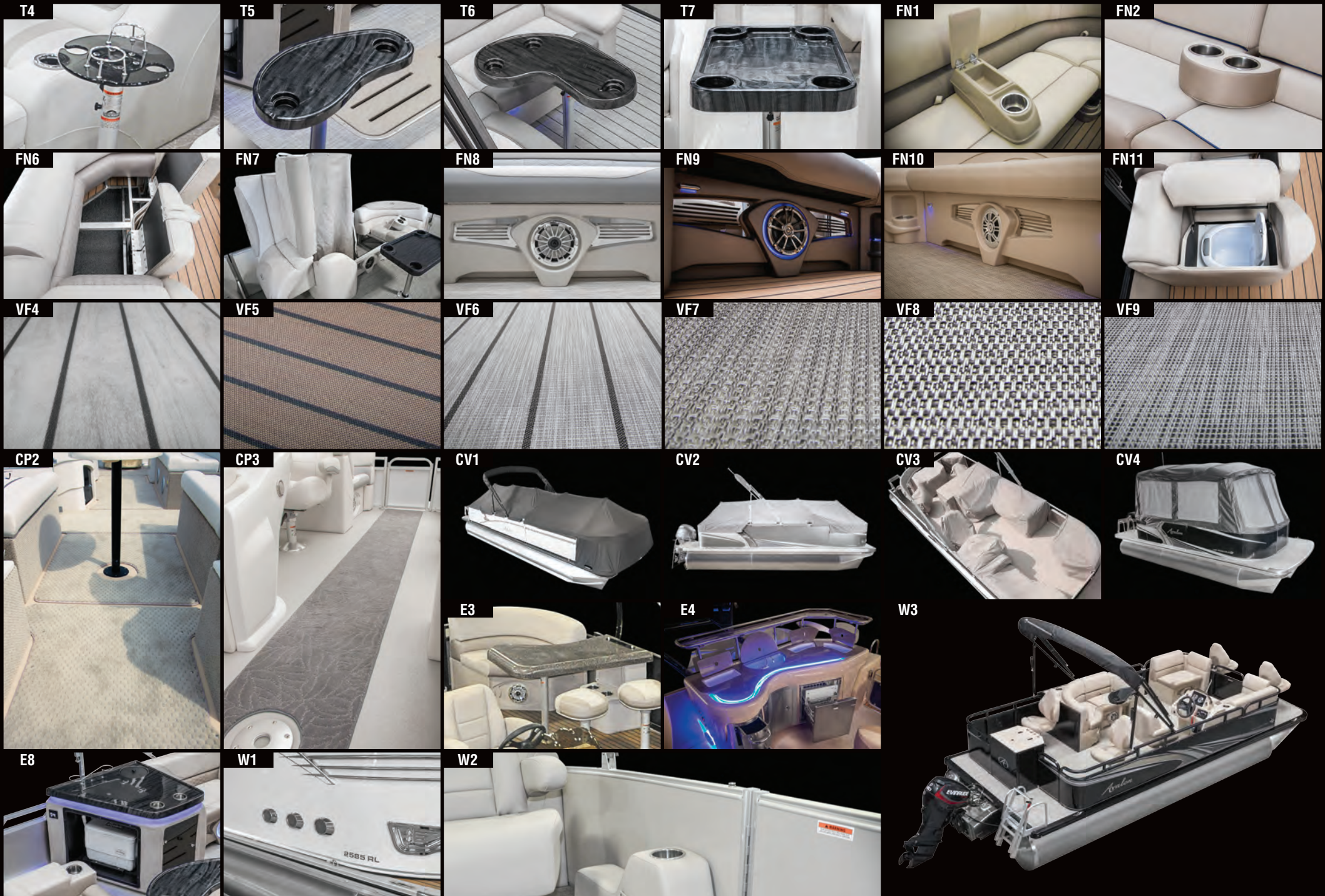
E6



E7



FEATURES & OPTIONS

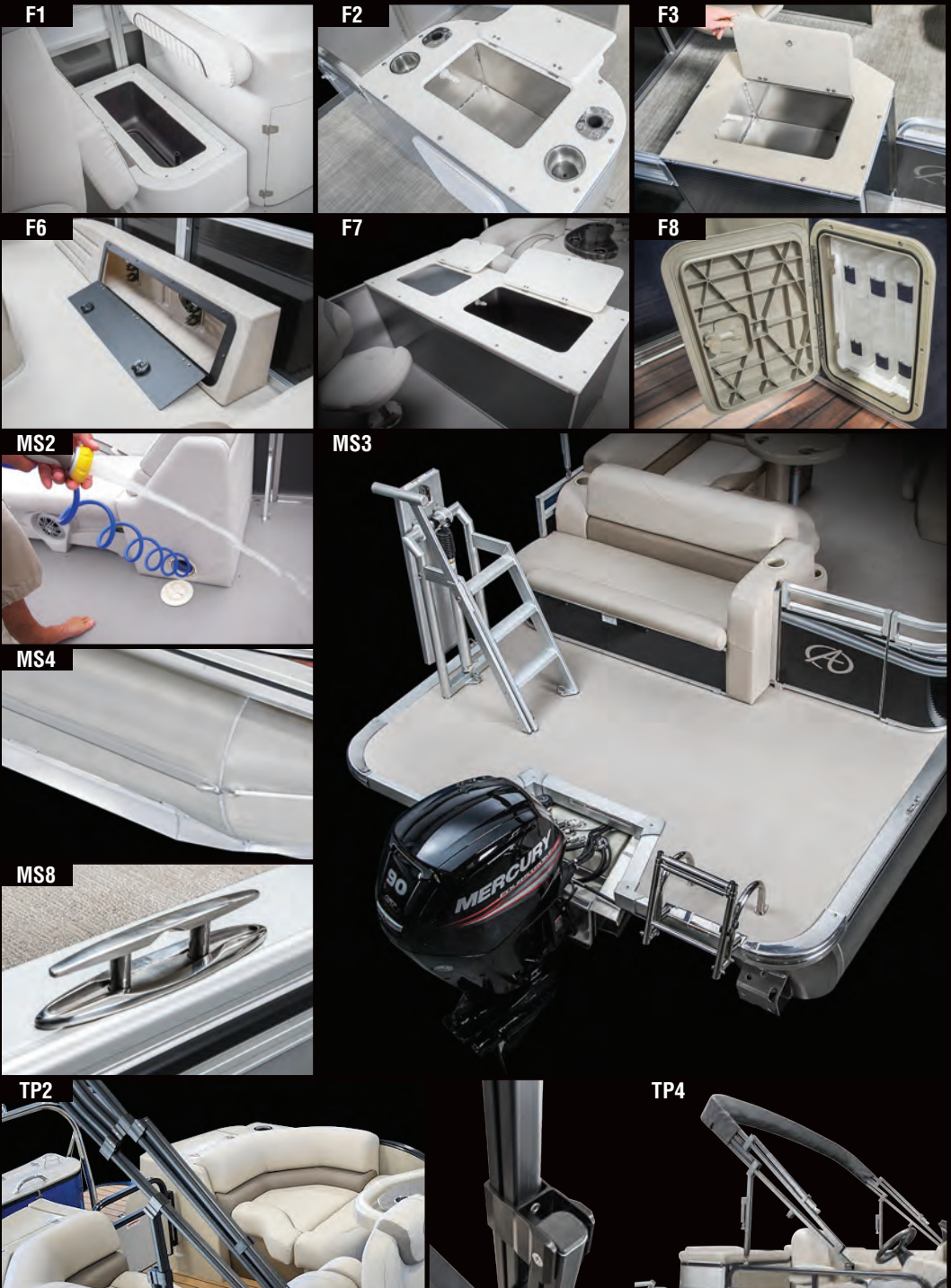


FEATURES & OPTIONS

			EXCALIBUR	AMBASSADOR	CATALINA PLATINUM	CATALINA	LSZ	GS	LS	VENTURE
FISHING	Helmstand livewell	F1	•	•	•	QF	QF	CCF	•	•
	Large rear fishing center with livewell	F2	•	•	•	F	F	F	•	•
	Small rear fishing center with livewell	F3	•	•	•	•	•	•	F	F
	Livewell under bench	F4	0	0	0	0	0	0	BF	BF
	Sink with external water supply	F5	•	•	•	F	•	CCF	•	•
	Rod box	F6	•	•	•	0 F	0 F	CCF	0 F	•
	Extra large livewell/livewell combo	F7	•	•	•	0 F	•	0 F	•	•
	Tackle trays built-in	F8	•	•	•	F	•	CCF	•	•
MISC	Gas grill	MS1	0	0	0	0	0	0	0	0
	Wash down kit	MS2	0	0	0	0	0	0	0	0
	Extended rear patio deck	MS3	•	•	0*	0*	0*	•	0*	0*
	Side protector keels	MS4	S	S	S	0	0	0	0	0
	Solid bottom keels	MS5	0	0	0	0	0	0	0	0
	Ladder SST telescoping	MS6	S	S	S	S	S	• F	S	•
	Ladder aluminum anodized 4-step	MS7	•	•	•	•	•	S*	•	S
	Pull-up cleat	MS8	S	S	S	0	0	0	0	0
STEERING	Baystar hydraulic below 150 HP	-	•	•	•	0	FS	0	CCF	0
	SeaStar hydraulic 150 HP +	-	S	S	FS W	0	0 W	0	0	0
	Steering electric power assist	-	0	0	0	0	0	0	0	0
	Burano steering wheel	ST1	S	S	S	0	0	0	0	0
BLACKOUT	LED accent black docklights built in	L4	•	0	0	0	0	0	0	•
	Lighted wall mount black air vents	L4	•	0	0	0	•	•	•	•
	D-rail blackout Bimini frame	TP2	S	S+	0+	•	•	•	•	•
	Square blackout Bimini frame	TP4	•	•	•	0+	0	0	0	0
	Blackout wall railings	W3	•	•	0	0	0	0	0	0
	Blackout rubrail and corners	W3	0	0	0	0	0	0	0	0

0 = Option
 S = Standard
 • = Not an option
 W = Option - But standard on windshield model

F = Fish models
 FS = Option - But standard on FUNSHIP models
 + = Except Funship
 * = Varies depending on floor plan





WALL COLORS (ALL MODELS)

Frost White	Black	Burgundy	Blue	Electric Blue
Champagne	Red	Silver Metallic	White	Charcoal Metallic

PRIMARY SEAT COLORS

White	Buckskin	Silver

SEAT ACCENT COLORS

Neutra	Black	Cordovan	Indigo
Sterling	Electric Blue	Red	

THE CERTIFIED ADVANTAGE

NMMA[®]
CERTIFIED ✓
 using **ABYC** standards



A proud supporter of the
Travis Mills Foundation
 foundation@travismills.org

"Never give up. Never quit."

The NMMA-Certified label on an Avalon pontoon boat lets you know it was built to meet, and often exceed, the industry's strictest quality and safety standards for critical components such as electrical systems, powering, flotation, fuel systems and navigation lights. Certified boats must also pass rigorous annual inspections from independent third-party inspectors. According to U.S. Coast Guard statistics, NMMA-Certified boats have been shown to be safer than noncertified boats.



Avalon's exclusive MATRIX 50 heavy-duty 50-gauge marine seat coverings with a 24% substructure are tested strongest against tears, punctures and stains.



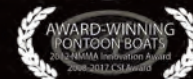
www.facebook.com/AvalonPontoons

Avalon

PONTOONS[®]

903 Michigan Avenue, Alma, Michigan 48801
 Toll Free: 800.334.2913 • 989.463.2112 • Fax: 989.463.8226

www.avalonpontoons.com



Avalon's superior innovation and customer satisfaction is recognized by the NMMA CSI AWARD for 2008 through 2017 and the Marine Industry 2012 Innovation Award!

Dimensions, capacities, ratings and additional specifications plus complete warranty and service information are available from your Avalon dealer. Product illustrations and data within this catalog are based upon information available at the time of publication. Avalon reserves the right to make changes without notice or obligation. Ask your local Avalon dealer for the most current product specifications prior to purchase. Some of the equipment shown separately or on products illustrated in this catalog may be optional at extra cost. All Avalon boats meet or exceed the standards established by the ABYC and USCG flotation, fuel systems, ventilation, electrical and safety.