



*Avalon*  
LUXURY PONTOON BOATS

2022 CATALOG | THE ART OF THE PONTOON

# ADVENTURE |

Avalon is the only manufacturer who truly puts their products to the ultimate test! The Atlantic Ocean, the Pacific Ocean, the Gulf of Mexico, the Caribbean Sea, Lake Superior, Lake Michigan, the Mississippi... *need we say more?*



Baltimore to Key West - 2004



Key West to the Dry Tortugas - 2009



Los Angeles to Catalina Island to San Diego - 2014



Tampa to Cuba - 2017



Retracing the final voyage of the Edmund Fitzgerald on Lake Superior - 2018



Chicago to Mackinac Island - 2005



Ft. Lauderdale to Bimini Bahamas - 2006

Enjoy the details of all these great adventures at [www.avalonpontoon.com](http://www.avalonpontoon.com)



# MORE THAN JUST A GREAT BOAT

- 2020 NMMA Innovation Award winner
- 2019 Michigan Manufacturer of the Year
- The only pontoon manufacturer to take multiple endurance trips across some of the most challenging waterways in the world
- The FIRST ever pontoon boat to pace an offshore powerboat race. 2785 Excalibur ELW powered by Twin Mercury 450's - Official Pace Boat of Roar Offshore Powerboat Races, October 2019 and October 2021
- The first winner of the NMMA Innovation award for an aluminum pontoon boat
- A perennial winner of the NMMA CSI Award
- One of the few privately owned pontoon boat manufacturers that knows and respects our customers and dealers
- One of the largest vertically integrated boat manufacturing facilities in the world



OFFICIAL PACE BOAT

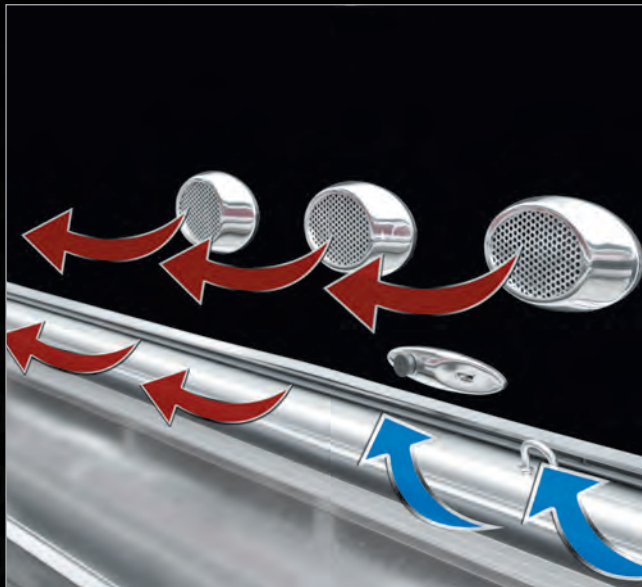


excellence  
AWARDS

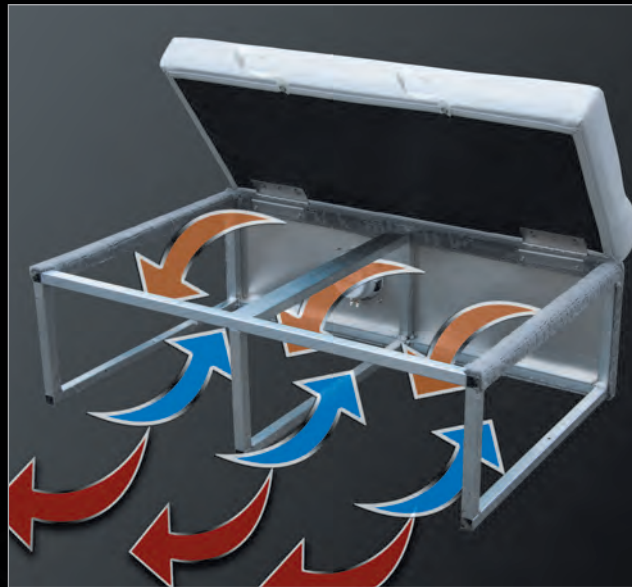




# CONSTRUCTION | Exclusive High-Quality Features



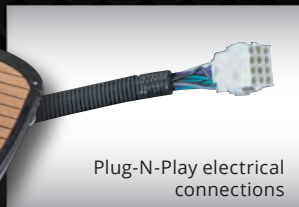
You won't have to deal with mildew or fungus with Avalon's exclusive Flo Thru Ventilation™ Seating. Unlike plastic seating, our exclusive aluminum seat frames have external and internal air flow that dries out the seat compartments while moving and even when the boat is stored!



Our exclusive aluminum seat frames have 30 percent more storage than conventional plastic seat frames. Try putting all this in plastic seat storage!



Easy to clean, beautiful external wall.



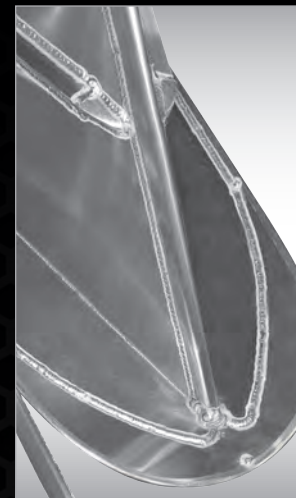
Plug-N-Play electrical connections



Exclusive side protector keel – protects pontoon from side impact at docks, provides a spray diversion and makes pontoon structure stronger.



One-piece nose cone has heavy-duty double-wrapped, double-thickness .200 leading edge.



Integrated nose cone splash fins cannot be broken off! Fins have welded edge guard.



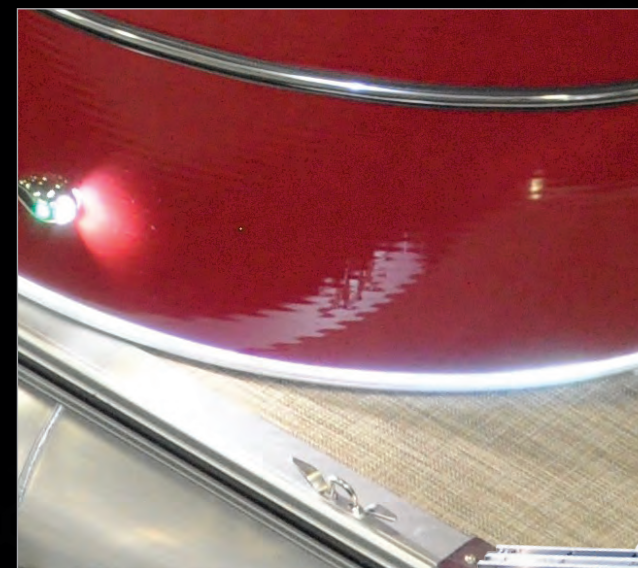
Avalon's unique suspension seat cushions provide soft comfortable cushions that don't bottom out on a hard support surface

Docklights built into walls are protected from impact and are not a trip hazard! Nose cone tips covered by deck are less prone to damage and are less dangerous than exposed.

**AVALON'S EXCLUSIVE MATRIX 50  
HEAVY-DUTY MARINE SEAT COVERINGS  
ARE TESTED STRONGEST AGAINST  
TEARS, PUNCTURES AND STAINS.**



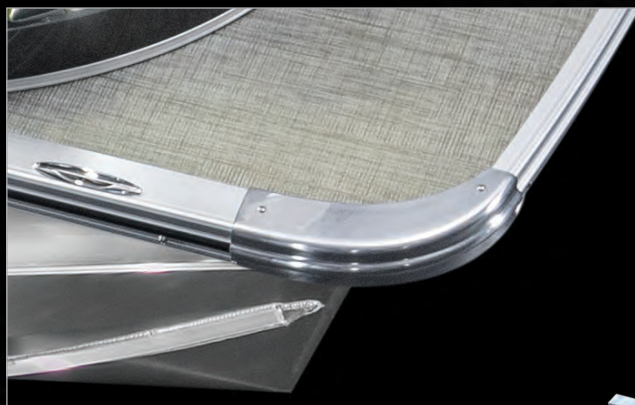
Heavy-duty rub rail with rubber bumper.



Reflective wall stripe makes boat easier to see at night.



Heavy-duty, stylishly designed, seat frame cladding eliminates fabric covering and provides a vented, beautiful accent to Avalon's Deco designs



Heavy-duty deck corner protection.

Solid frame includes double solid full risers and double bolted motor pod all connected with double bolted hat channel crossbeams plus bow and stern .250 U bars.



**VERTICALLY INTEGRATED  
90% of Boat is Made In-house**





LIFETIME LIMITED\*  
TRANSFERABLE STRUCTURAL WARRANTY

For non-commercial use, single engine equipped boats

**LIFETIME WARRANTY INCLUDES: Pontoons, crossbeams, seat frames,  
motor mounts, wood decking, and rail structure**

10 Year Limited\* Transferable bow to stern warranty on  
all other components on your boat

*\* Warranty applies to 2022 model boats. See dealer for full warranty information  
including limitations and exclusions.*



# A WORK OF ART FOR EVERY BUDGET TABLE OF CONTENTS

## RENAISSANCE COLLECTION

**Waketoon** ..... 1-2

## MASTER COLLECTION

### Excalibur

Elite Windshield & Elite Windshield Port Chair ..... 3  
Electric Rear Lounge Windshield ..... 4  
Quad Lounge - Windshield ..... 5

### Catalina Platinum

Versatile Rear Bench ..... 7  
Electric Versatile Rear Bench Windshield ..... 8  
Quad Lounge ..... 9  
Quad Lounge Windshield ..... 10  
Cruise ..... 11  
Cruise Funship ..... 12  
Entertainer ..... 13  
Entertainer Funship ..... 14  
Rear J Lounge ..... 15  
Elite Windshield ..... 16  
Electric Rear Lounge ..... 17

## SIGNATURE COLLECTION

### Catalina

Elite ..... 19  
Entertainer ..... 20  
Cruise Funship ..... 21  
Cruise, Rear Lounge ..... 22  
Quad Lounge ..... 23  
Rear J Lounge ..... 24  
Versatile Rear Bench ..... 25  
Versatile Rear Lounge ..... 26  
Quad Fish, Rear Fish ..... 27

### LSZ

Cruise ..... 29  
Cruise Rear Bench ..... 30  
Cruise II ..... 31  
Quad Lounge ..... 32  
Rear Lounge ..... 33  
Entertainer ..... 34  
Versatile Rear Lounge ..... 35  
Versatile Rear Bench ..... 36  
Versatile Rear Bench Windshield ..... 37  
Elite, Elite Windshield ..... 38  
Rear Fish ..... 39

### GS

Cruise ..... 41  
Cruise II ..... 42  
Quad Lounge ..... 43  
Elite Windshield ..... 44  
Center Console Fish ..... 45  
Quad Fish ..... 46  
Rear Fish ..... 47

## BOUTIQUE COLLECTION

### Venture

Cruise ..... 49  
Cruise Rear Bench ..... 50  
Quad Lounge ..... 51  
Fish-N-Cruise ..... 52  
Cruise Bow Fish ..... 53  
Bow Fish ..... 54  
Quad Fish, Rear Fish ..... 55

### VLS

Quad Lounge ..... 57

### VTX

Cruise ..... 58  
Quad Fish ..... 59

## GALLERY OF FEATURES & OPTIONS

Features & Options ..... 61 - 68  
Performance & Watersports ..... 69  
Twin Engine Option ..... 70  
Color Options ..... 71 - 72

*More models may be available. Please review line drawings for all available models.*



# WAKETOON

RENAISSANCE COLLECTION

Waketoon







# STANDARD FEATURES & SPECIFICATIONS

## HELMSTAND/ELECTRONICS

- Dual Commander fiberglass helmstands with full windshield, upholstered automotive-stitched trim, & touch-screen dash panel with detailed information center, USB charging ports & light controls
- (2) 12-Volt power points
- Garmin 743XSV GPS
- Premium sound package: Fusion RA-770 radio, (6) Fusion SG RGB-lighted speakers & grills, Fusion 6-channel amp, Fusion D mono block digital amp, 10" Fusion Subwoofer, USB audio input & charge
- Steering - SeaStar hydraulic tilt
- Mazzo steering wheel with black pearlwood
- Courtesy light on helmstand
- Battery dual smart switch system

## INTERIOR

- Admiral high back reclining driver's chair with flip-up bolster self-leveling arms & color-matched accents
- Adjustable height seat pedestal on captain's chair
- Chair adjustment slider, front, back, rotate
- Interior composite wall panels
- Full Riptide vinyl flooring
- RGB lighted cup holders & mood lighting
- USB charging port
- Trash can built into lounge arm
- Lifetime aluminum seat frames with flow-through ventilation
- Seat frame floor matting
- Exclusive Matrix 50 ultrafine touch primary seat vinyl
- Deluxe seat frame cladding with SST vents
- (2) moveable cupholders
- Suspension seating

## FUEL

- 64 gallon remote fill center tube
- SST gas cap & vent

## BUILT-IN POWER

- Mercury 350HP 6.2L V-8 I/O

## WATERSPORTS FEATURES

- Touchscreen automatic & manual wake controls: adjustable electric actuators to press Waveshaper fins, multiple adjustment angles for precise wave definition preferences & ability to preset mph to user specifications
- Xtreme electric sport tower with RGB tower lights & bimini top
- Ski tow bar on sundeck
- Rear view surf camera
- Integrated rear swim platform

## EXTERIOR

- Deco 2 external smooth multi-panel retro two-tone walls
- USCG navigation lights
- RGB Deco built-in docklights
- RGB rubrail lights
- RGB rear underwater lights
- Hi-flex bold chrome logos
- Gates with lift-n-lay hinges & SST EZ lift latch
- Rear stainless steel telescoping ladder
- Quick-release fender holders with straps
- Full color-matched mooring cover

## HULL

- Patented Wakesurf triple pontoon hull with an integrated rocker & shape along with contoured wake plates to enable desirable water flow
- In-floor ski storage
- Aluminum waveshield
- Side keels
- 3" rub rail with black rubber insert
- Deck corner impact protection - polished aluminum
- Tapered front deck
- Extended rear deck
- Pontoon double full risers
- (4) stainless steel pull-up cleats



2385

WT



WAKETOON	Length Class	Boat Length Overall	Width	Dry Weight	Max Weight	Max Persons Pounds	Max Number Persons	Max Engine HP
2385 X 3 WT	23'	23'9"	8.5'	3142	2815	1415	10	350



# EXCALIBUR | Elite Windshield & Elite Windshield Port Chair



2785 ELW (Boat as Shown with Many Aftermarket Accessories)

# EXCALIBUR | Electric Rear Lounge Windshield



2785 RLW



THE ART OF THE PONTOON | WWW.AVALONPONTOONS.COM

# EXCALIBUR | Quad Lounge Windshield

MASTER COLLECTION

Excalibur



2585 QLW



2785 ELW (Boat as Shown with Many Aftermarket Accessories)





# STANDARD FEATURES & SPECIFICATIONS

## HELMSTAND/ELECTRONICS

- Dual Commander fiberglass helmstands with full windshield, upholstered automotive-stitched trim, & touch-screen dash panel with detailed information center, USB charging ports & light controls
- (2) 12-Volt power points
- Garmin 743XSV GPS
- Excalibur GT sound package: Fusion RA-770 radio, (6) Fusion SG RGB-lighted speakers & grills, Fusion 6-channel amp, USB audio input & charge
- Steering - SeaStar hydraulic tilt
- Mazzo steering wheel with black pearlwood
- Courtesy light on helmstand

## INTERIOR

- Admiral high back reclining driver's chair with self-leveling arms & color-matched accents
- Adjustable height seat pedestal on captain's chair
- Chair adjustment slider, front, back, rotate
- Interior composite wall panels
- Full Teak vinyl flooring
- RGB lighted cup holders & mood lighting
- Large rectangle greywood heavy duty thermoform table with large cup holders, recessed tray & phone storage
- USB charging port
- Trash can built into lounge arm (where possible)
- Lifetime aluminum seat frames with flow through ventilation
- Seat frame floor matting
- Exclusive Matrix 50 ultrafine touch primary seat vinyl
- Deluxe seat frame cladding with SST vents
- (2) moveable cupholders
- Suspension seating
- Privacy station curtain & frame (RLW only)
- Battery dual smart switch system

## EXTERIOR

- GX solid welded aluminum painted walls with fore & aft fiberglass accents
- Bimini top with heavy duty aluminum D-frame, SST quick release bimini mounts & transport brackets
- USCG navigation lights
- RGB exterior EGT docklights
- RGB rubrail lights
- RGB rear underwater lights
- Hi-flex bold black logos
- Heavy duty gates with logo panel
- Rear stainless steel telescoping ladder
- Quick-release fender holders with straps
- Full color-matched mooring cover
- Ski tow bar

## HULL

- Waveglider triple 27" pontoons w/high performance lifting fins, ski tow bar & aluminum waveshield
- Side keels
- 3" black rub rail with black rubber insert
- Deck corner impact protection - black
- Tapered front deck
- Extended rear deck
- Pontoon double full risers
- (4) stainless steel pull-up cleats
- Bolted deck

## FUEL

- 58 gallon remote fill center tube tank
- SST gas cap & vent

## 2785

## 2585

ELW



QLW



RLW



ELWPC



EXACLIBUR	Length Class	Boat Length Overall	Deck Length	Pontoon Diameter	Width	Dry Weight	Max Weight Capacity	Max Persons Pounds	Max Number Persons	Max Engine HP
2585 X 3 27" WG	25	26'6"	25'3"	27" x 3	8.5'	4600	2900	1950	14	400
2785 x 3 27" WG	27	28'6"	27'3"	27" x 3	8.5'	5000	3160	2345	16	450



# CATALINA PLATINUM | Versatile Rear Bench



# CATALINA PLATINUM | Electric Versatile Rear Bench Windshield



2785 EVRBW (Shown with Optional EX Tower)



# CATALINA PLATINUM | Quad Lounge



2585 QL



2585 QLW

Boats shown may show optional equipment.



CATALINA PLATINUM | Quad Lounge Windshield



2585 QLW (Shown with Optional EX Tower)



# CATALINA PLATINUM | Cruise



2385 CR

Boats shown may show optional equipment.

# CATALINA PLATINUM | Cruise Funship



2585 & 2785 CR FS (Shown with Optional Deco Uprights)



THE ART OF THE PONTOON | [WWW.AVALONPONTOONS.COM](http://WWW.AVALONPONTOONS.COM)

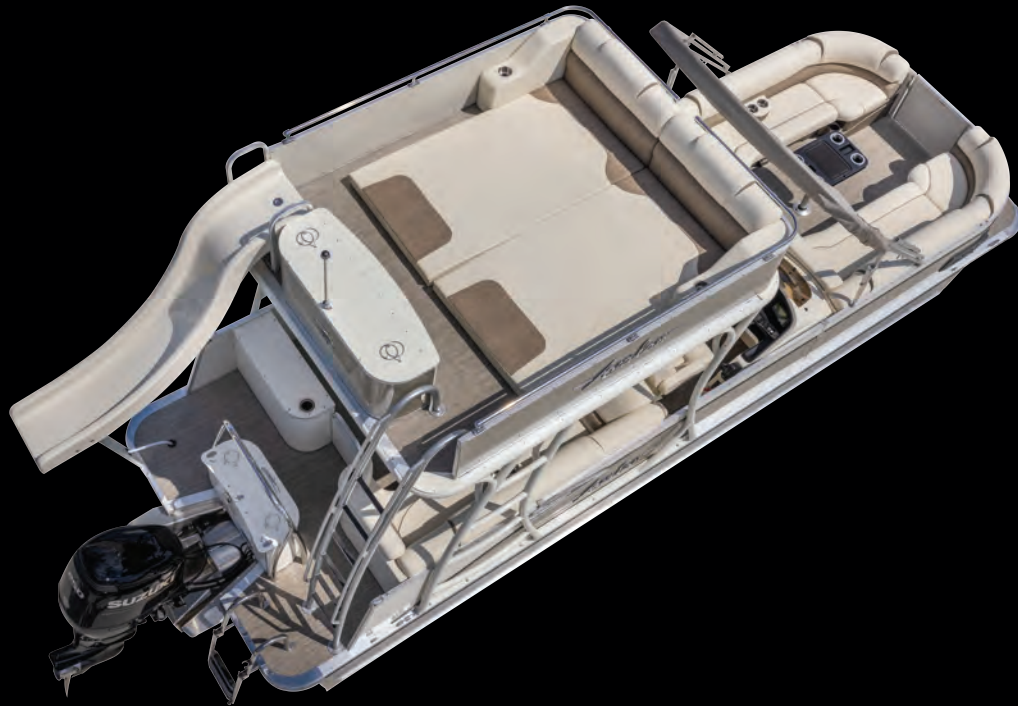
# CATALINA PLATINUM | Entertainer



2585 ENT

Boats shown may show optional equipment.

CATALINA PLATINUM | Entertainer Funship



2785 ENT FS (Shown with Optional Deco Uprights)



# CATALINA PLATINUM | Rear J Lounge



CATALINA PLATINUM | Elite Windshield



2585 ELW (Shown with Optional Deco Sport Arch)



2585 ELW (Shown with Optional Deco Sport Arch)

# CATALINA PLATINUM | Electric Rear Lounge



2585 RL (Shown with Optional Deco Sport Tower)







# STANDARD FEATURES & SPECIFICATIONS

## HELMSTAND/ELECTRONICS

- Ensign II fiberglass helmstand with soft touch designer dash panel with USB charging ports & removeable windshield
- Dual Commander fiberglass helmstands with full windshield, upholstered automotive-stitched trim, analog dash panel & glove box (ELW/EVRBW only)
- Tach, Volt, Fuel Gauges
- GPS speedometer
- 12-Volt power point
- Garmin 73CV GPS
- Gold Plus sound package: Fusion RA 670 radio, (6) Fusion XS blue-lighted speakers & grills, Fusion 5-channel amp, USB audio input & charge
- Steering – mechanical tilt (except CRFS ELW/ENTFS/EVRBW)
- Steering - SeaStar hydraulic tilt (CRFS ELW/ENTFS/EVRBW)
- Mazzo steering wheel with black pearlwood
- Courtesy light on helmstand

## INTERIOR

- Admiral high back reclining driver's chair with self-leveling arms & color matched accents
- Adjustable height seat pedestal on captain's chair
- Chair adjustment slider, front, back, rotate
- Interior composite wall panels
- Full Riptide vinyl flooring
- Blue lighted cup holders & mood lighting

- Greywood heavy duty thermoform table with large cup holders, recessed tray & phone storage (large kidney or rectangle)
- USB charging port
- Trash can built into lounge arm (where possible)
- Lifetime aluminum seat frames with flow-through ventilation
- Seat frame floor matting
- Exclusive Matrix 50 ultrafine touch primary seat vinyl
- Deluxe seat frame cladding with SST vent
- (2) moveable cupholders
- Suspension seating
- Lounge arms with storage (based on floorplans)
- Privacy station curtain & frame (N/A on 23' RJ)
- Vinyl non-skid strips for entry gates
- Battery dual smart switch system (CRFS/ENTFS only)

## EXTERIOR

- Deco 2 external smooth multi-panel retro two-tone walls
- Bimini top with heavy duty aluminum D-frame, SST quick release bimini mounts & transport brackets (except CRFS/ENTFS)
- USCG navigation lights
- Deco built-in docklights
- Hi-flex bold chrome logos
- Gates with lift-n-lay hinges & SST EZ lift latch

- Rear stainless steel telescoping ladder
- Quick-release fender holders w/straps
- Full color-matched mooring cover

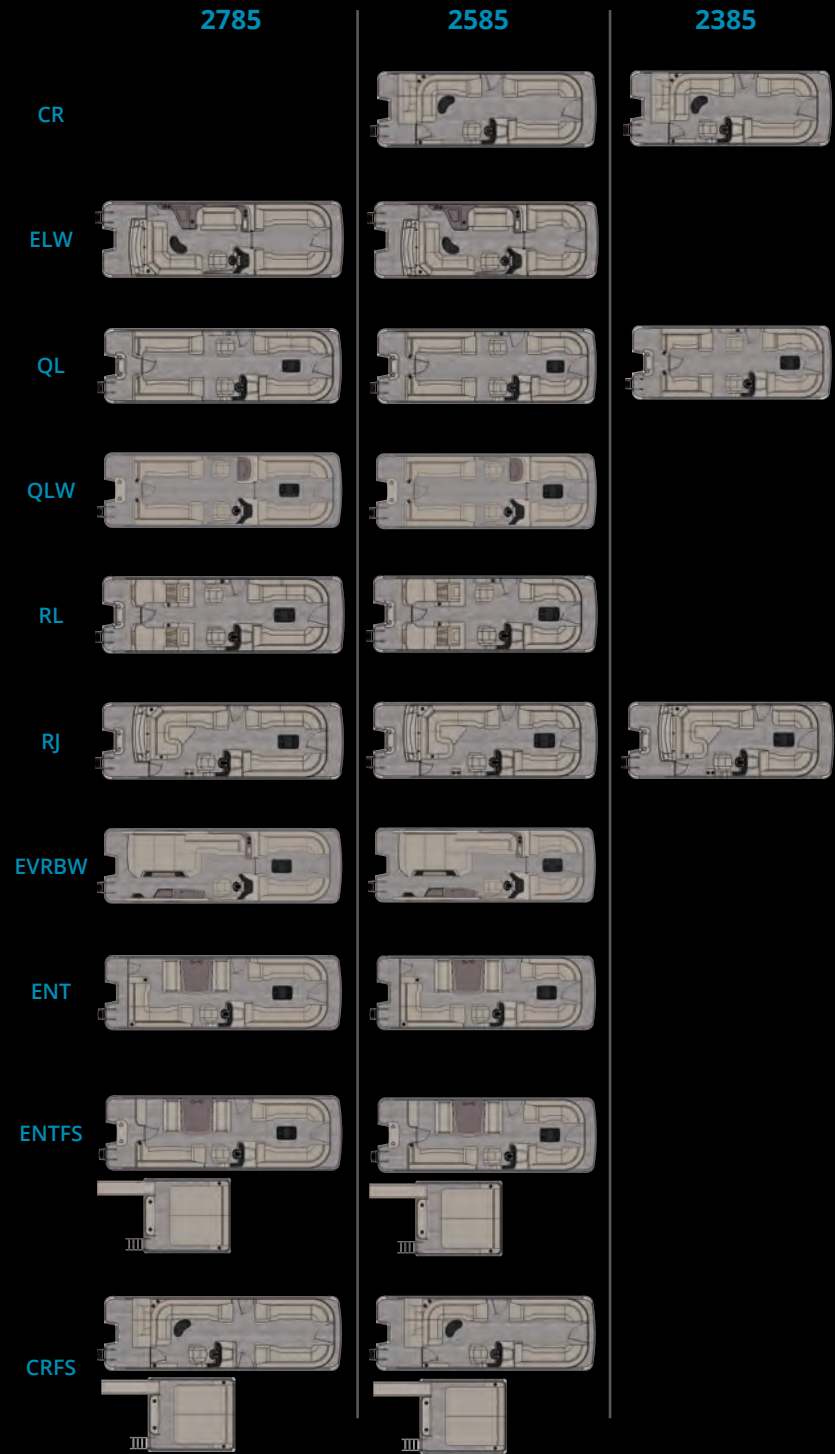
## HULL

- (2) 25" diameter pontoons (except CRFS/ELW/ENTFS/EVRBW)
- Waveglider triple 25" pontoons with high performance lifting fins, ski tow bar & aluminum waveshield (ELW/EVRBW only)
- Waveglider triple 27" pontoons with high performance lifting fins, ski tow bar & aluminum waveshield (CRFS/ENTFS only)
- Side keels
- 3" rub rail with black rubber insert
- Deck corner impact protection, polished aluminum
- Tapered front deck
- Extended rear deck
- Pontoon double full risers
- (4) stainless steel pull-up cleats
- 25" transom (CRFS/ENTFS only)

## FUEL

- 25 gallon remote fill transom tank (except CRFS/ELW/ENTFS/EVRBW)
- 32 gallon remote fill tank under sundeck (CR only)
- 58 gallon remote fill center tube tank (CRFS/ELW/ENTFS/EVRBW)
- SST gas cap & vent

CATALINA PLATINUM	Length Class	Boat Length Overall	Deck Length	Pontoon Diameter	Width	Dry Weight	Max Weight Capacity	Max Persons Pounds	Max Number Persons	Max Engine HP
2385 25"	23	23' 5"	23' 3"	25"	8.5'	2150	2150	1540	11	140
2385 X 3 25" SP	23	24' 6"	23' 3"	25" X 3	8.5'	2800	2582	1768	12	200
2385 X 3 25" WG	23	24' 6"	23' 3"	25" X 3	8.5'	2900	2560	1600	12	250
2385 X 3 27" WG	23	24' 6"	23' 3"	27" X 3	8.5'	3050	2980	1890	13	300
2585 25"	25	25' 5"	25' 3"	25"	8.5'	2450	2430	1770	13	140
2585 X 3 25" SP	25	26' 6"	25' 3"	25" X 3	8.5'	3000	2875	2060	14	200
2585 X 3 25" WG	25	26' 6"	25' 3"	25" X 3	8.5'	3100	2825	2015	14	275
2585 X 3 27" WG	25	26' 6"	25' 3"	27" X 3	8.5'	3200	3270	2460	17	400
2785 25"	27	27' 5"	27' 3"	25"	8.5'	2650	2675	2015	14	150
2785 X 25" SP	27	28' 6"	27' 3"	25" X 3	8.5'	3125	3200	2390	17	200
2785 X 25" WG	27	28' 6"	27' 3"	25" X 3	8.5'	3300	3120	2310	16	300
2785 X 27" WG	27	28' 6"	27' 3"	27" X 3	8.5'	3400	3575	2760	19	450
CATALINA PLATINUM FUNSHIP	Length Class	Boat Length Overall	Deck Length	Pontoon Diameter	Width	Dry Weight	Max Weight Capacity	Max Persons Pounds	Max Number Persons	Max Engine HP
2585 X 3 27" WG	25	26' 6"	25' 3"	27" X 3	8.5'	4200	3070	2000	14	250
2785 X 3 27" WG	27	28' 6"	27' 3"	27" X 3	8.5'	4485	3320	2370	17	250



# CATALINA | Elite



2385 EL



2385 EL

Boats shown may show optional equipment.

# CATALINA | Entertainer



2585 ENT



2585 ENT

# CATALINA | Cruise Funship

SIGNATURE COLLECTION

Catalina



2585 CRFS

Boats shown may show optional equipment.

# CATALINA | Cruise & Rear Lounge



2585 CRFS



2385 CR



2585 RL



# CATALINA | Quad Lounge



2385 QL (Shown with Optional Blackout Package & Deco Docklights)



2585 QL



Boats shown may show optional equipment.

# CATALINA | Rear J Lounge



2585 RJ



# CATALINA | Versatile Rear Bench



2385 VRB (Shown with Optional EX Tower & Gated Aft)

Boats shown may show optional equipment.



# CATALINA | Versatile Rear Lounge



2585 VRL (Shown with Optional Deco Docklights & Deco Sport Arch)



# CATALINA | Quad Fish & Rear Fish



2385 QF (Shown with Optional Fishing Chairs Upgrade)



2385 RF (Shown with Optional Fishing Chairs Upgrade)





# STANDARD FEATURES & SPECIFICATIONS

## HELMSTAND/ELECTRONICS

- Ensign II fiberglass helmstand with soft touch designer dash panel with USB charging ports
- Tach, Volt, Fuel Gauges
- GPS speedometer
- 12-Volt power point
- Gold sound package: Fusion RA-670 radio, (4) Fusion XS speakers & grills
- Gold Plus sound package (VRB/VRL): Fusion RA-670 radio, (6) Fusion XS speakers & grills, Fusion 5-channel amp, USB audio input & charge
- Steering – mechanical tilt (except CRFS)
- Steering - BayStar hydraulic tilt (CRFS only)
- Black soft-grip steering wheel with chrome spokes
- Removeable windshield
- Courtesy light on helmstand

## INTERIOR

- Commander low back reclining driver's chair with self-leveling arms
- Chair adjustment slider, front, back, rotate
- Interior composite wall panels (except QF/RF)
- Full Riptide vinyl flooring
- Stainless steel cup holders
- Greywood heavy duty thermoform table with large cup holders, recessed tray & phone storage (large kidney or rectangle)
- USB charging port

- Lifetime aluminum seat frames with flow-through ventilation
- Plush designer furnishings using Matrix 50 primary seat vinyl
- Deluxe seat frame cladding
- 2 moveable cupholders
- Suspension seating
- Lounge arms with storage (based on floorplans)
- Privacy station curtain & frame (N/A on 21' QL & 23' RJ)
- Vinyl non-skid strips for entry gates

## EXTERIOR

- Deco 3 external smooth retro monochromatic walls
- Bimini top with 1 1/4" square anodized aluminum
- frame, SST quick release bimini mounts & transport brackets (except CRFS)
- USCG navigation lights
- Exterior nav/docklight combo
- Hi-flex chrome logos
- Gates with lift-n-lay hinges & SST EZ lift latch
- Rear stainless steel telescoping ladder

## HULL

- (2) 25" diameter pontoons (except CRFS)
- (2) 27" diameter pontoons with lifting fins (CRFS only)
- 3" rub rail with black rubber insert

- Deck corner impact protection – polished aluminum
- Tapered front deck
- Extended rear deck
- Pontoon double full risers
- (4) stainless U-bolt & cleat combo
- 25" transom (CRFS only)

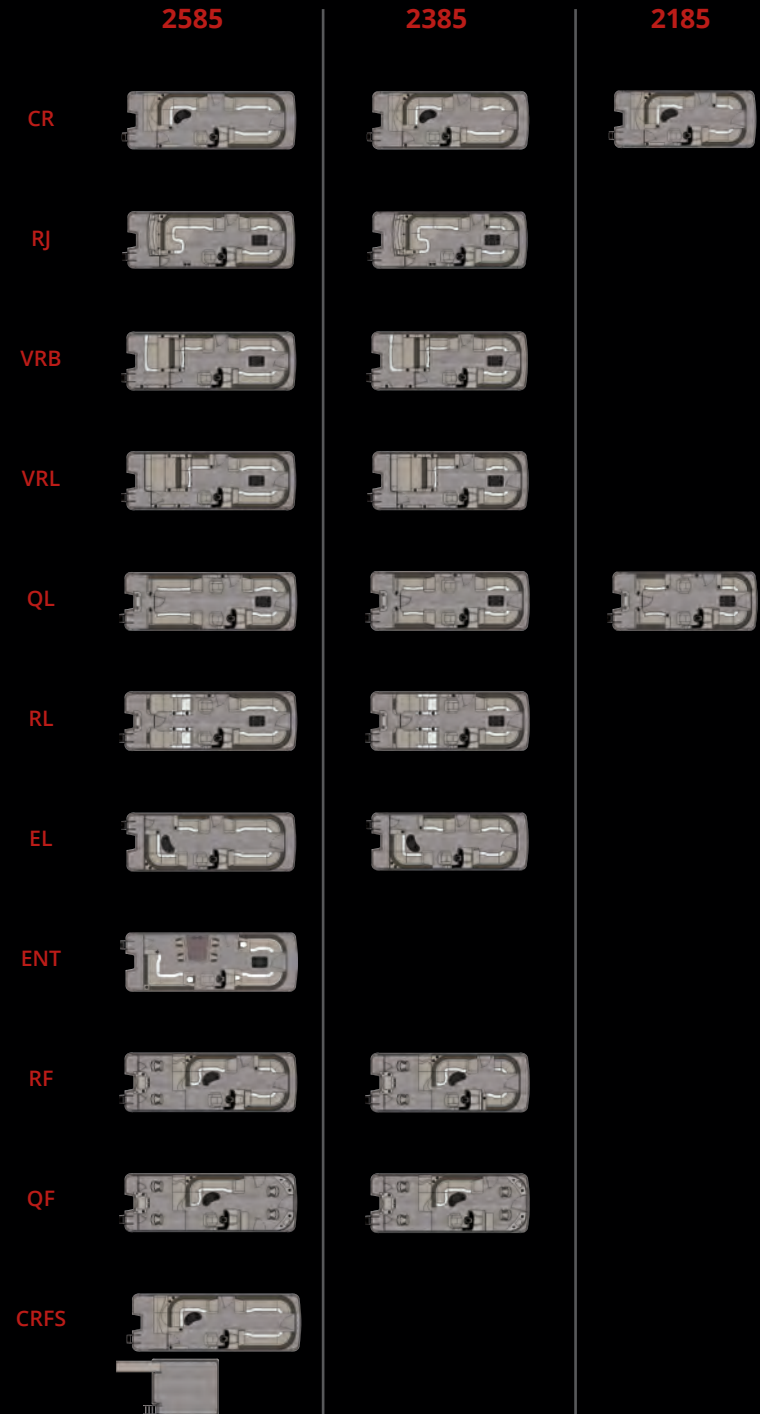
## FUEL

- 25 gallon remote fill transom tank (except CR/CRFS)
- 32 gallon remote fill tank under sundeck with SST gas cap & vent (CR & CRFS only)

## FISHING

- Garmin Striker 5CV color fishfinder depth finder (QF/RF)
- Livewell in front of helmstand (QF only)
- Rear fishing center with 2 fishing chairs, rod holder, & livewell (QF/RF)
- Tackle trays with rear sink & access door (QF/RF)

CATALINA	Length Class	Boat Length Overall	Deck Length	Pontoon Diameter	Width	Dry Weight	Max Weight Capacity	Max Persons Pounds	Max Number Persons	Max Engine HP
2185 25"	21	21' 5"	21' 3"	25"	8.5'	1850	2035	1300	10	115
2185 X 3 25" SP	21	22' 6"	21' 3"	25" X 3	8.5'	2750	2240	1300	10	175
2185 X 3 25" WG	21	22' 6"	21' 3"	25" X 3	8.5'	2750	2240	1300	10	175
2385 25"	23	23' 5"	23' 3"	25"	8.5'	2150	2150	1540	11	140
2385 X 3 25" SP	23	24' 6"	23' 3"	25" X 3	8.5'	2800	2582	1768	12	200
2385 X 3 25" WG	23	24' 6"	23' 3"	25" X 3	8.5'	2900	2560	1600	12	250
2385 X 3 27" WG	23	24' 6"	23' 3"	27" X 3	8.5'	3050	2980	1890	13	300
2585 25"	25	25' 5"	25' 3"	25"	8.5'	2450	2430	1770	13	140
2585 X 3 25" SP	25	26' 6"	25' 3"	25" X 3	8.5'	3000	2875	2060	14	200
2585 X 3 25" WG	25	26' 6"	25' 3"	25" X 3	8.5'	3100	2825	2015	14	275
2585 X 3 27" WG	25	26' 6"	25' 3"	27" X 3	8.5'	3200	3270	2460	17	400
CATALINA FUNSHIP	Length Class	Boat Length Overall	Deck Length	Pontoon Diameter	Width	Dry Weight	Max Weight Capacity	Max Persons Pounds	Max Number Persons	Max Engine HP
2585 27"	25	25' 5"	25' 3"	27"	8.5'	3300	2590	1830	12	150



# LSZ | Cruise



2085 CR



2285 CR



2485 CRB (Shown with Optional Deco Sport Arch, Lillipad Diving Board & Patio Pad)



2485 CRB



# LSZ | Cruise II



2285 CR II



(Shown with Optional Smart 80 Touchscreen)

# LSZ | Quad Lounge



2485 QL (Shown with Optional 4000 Series Furniture)



2685 QL



(Shown with Optional Full Camper Enclosure)

# LSZ | Rear Lounge







2485 ENT (Shown with Optional Sport Highback Recliner)



# LSZ | Versatile Rear Lounge



2485 VRL (Shown with Optional Deco Sport Arch)



2485 VRL

LSZ | Versatile Rear Bench



2685 VRB



# LSZ | Versatile Rear Bench Windshield



2485 VRBW



2485 VRBW



2485 VRBW (Shown with Optional Deco Sport Arch)

LSZ | Elite & Elite Windshield



2485 EL



2285 ELW



2285 ELW



# LSZ | Rear Fish



2485 RF (Shown with Optional Fishing Chair Upgrade)





# STANDARD FEATURES & SPECIFICATIONS

## HELMSTAND/ELECTRONICS

- Crew roto helmstand with large dash & side storage
- Dual Cadet roto helmstands with full windshield & greywood dash panels (Standard On ELW/VRBW Only)
- Tach, Volt, Fuel Gauges
- 12-Volt power point
- Silver sound package: Fusion RA-210 radio, (4) Fusion EL speakers & grills
- Silver Plus sound package (VRB/VRL/VRBW): Fusion RA-210 radio, (6) Fusion EL speakers & grills, Fusion 4-channel amp, USB audio input & charge
- Steering – mechanical tilt
- Steering – SeaStar hydraulic tilt (ELW/VRBW only)
- Black soft-grip steering wheel
- Removeable windshield (except ELW/VRBW)
- Courtesy light on helmstand

## INTERIOR

- Sport low back driver's chair with arms
- Chair adjustment slider, front, back, rotate
- Full Riptide vinyl flooring
- Stainless steel cup holders
- Greywood heavy duty thermoform table with large cup holders, recessed tray & phone storage (large kidney or rectangle)
- 20-quart insulated cooler (ELW only)
- USB charging port
- Lifetime aluminum seat frames with flow-through ventilation

- Custom designed furnishings using Matrix 50 primary seat vinyl
- Deluxe seat frame cladding
- Suspension seating
- Lounge arms with storage (based on floorplans)
- Vinyl non-skid strips for entry gates

## EXTERIOR

- Deco 4 external multi panel smooth walls
- Bimini top with 1¼" square anodized aluminum frame, SST quick release bimini mounts & transport brackets
- USCG navigation lights
- Mirrored chrome logos
- Gates with lift-n-lay hinges
- Rear stainless steel telescoping ladder

## HULL

- (2) 25" diameter pontoons
- Sport performance pkg 25" – MAX 200HP (ELW/VRBW only)
- 3" rub rail with black rubber insert
- Deck corner impact protection – aluminum
- Tapered front deck
- Extended rear deck
- Pontoon double full risers
- (4) stainless U-bolt & cleat combo

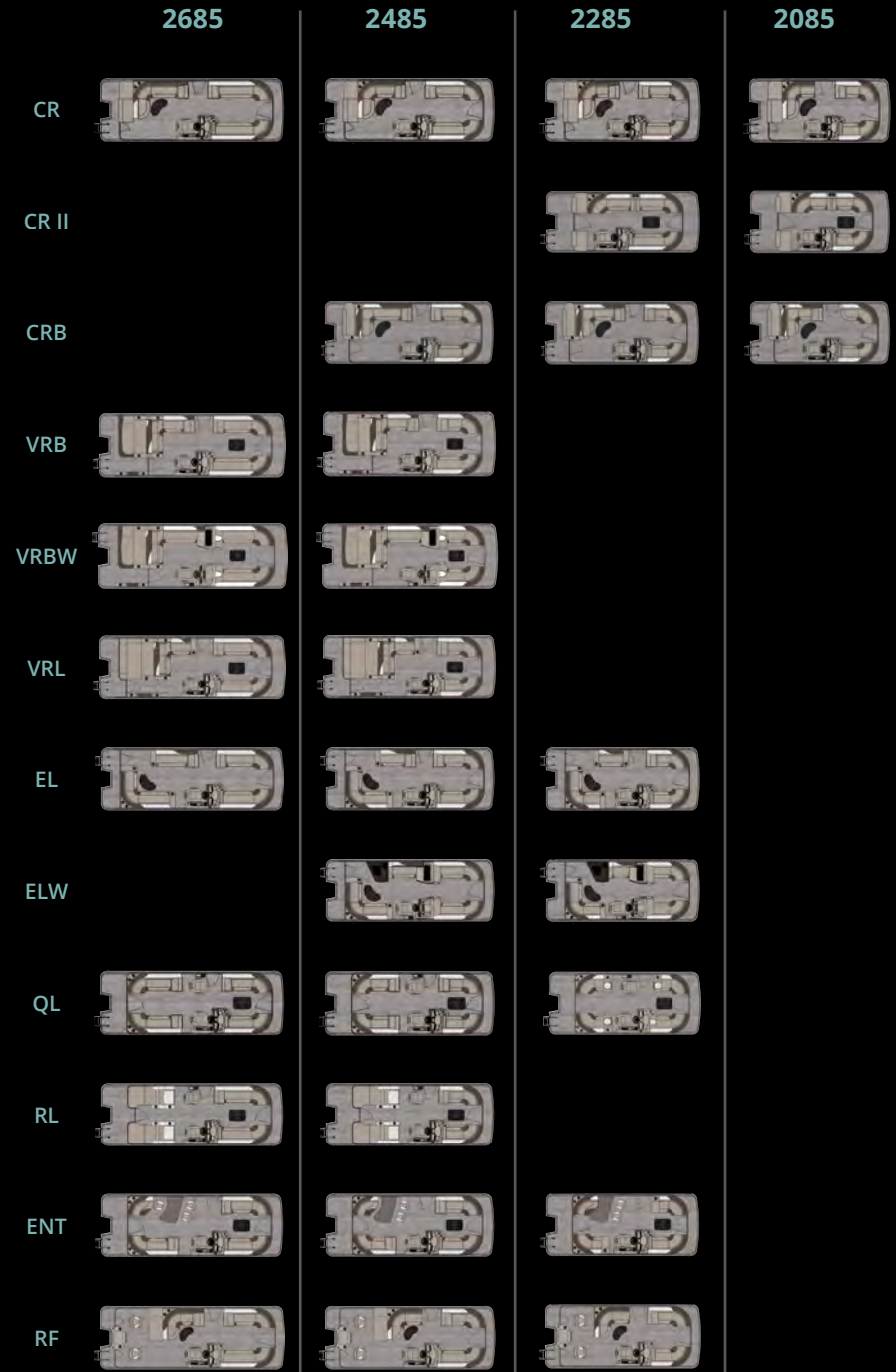
## FUEL

- 25 gallon direct fill transom tank
- 24 gallon remote fill tank under sundeck with SST gas cap & vent (CR)
- 38 gallon direct fill tank in center pontoon (ELW/VRBW)

## REAR FISH

- Rear fishing center with 2 fishing chairs, rod holders & livewell

LSZ	Length Class	Boat Length Overall	Deck Length	Pontoon Diameter	Width	Dry Weight	Max Weight Capacity	Max Persons Pounds	Max Number Persons	Max Engine HP
2085 25"	20	19' 5"	19' 3"	25"	8.5'	1650	1835	1475	10	90
2085 X 3 25" SP	20	20' 6"	19' 3"	25" X 3	8.5'	1950	2100	1440	10	115
2085 X 3 25" WG	20	20' 6"	19' 3"	25" X 3	8.5'	1950	2100	1440	10	115
2285 25"	22	21' 5"	21' 3"	25"	8.5'	1800	2035	1380	10	115
2285 X 3 25" SP	22	22' 6"	21' 3"	25" X 3	8.5'	2200	2370	1710	12	175
2285 X 3 25" WG	22	22' 6"	21' 3"	25" X 3	8.5'	2200	2370	1710	12	175
2285 X 3 27" WG	22	22' 6"	21' 3"	27" X 3	8.5'	2400	2700	2020	14	175
2485 25"	24	23' 5"	23' 3"	25"	8.5'	2050	2260	1600	11	140
2485 X 3 25" SP	24	24' 6"	23' 3"	25" X 3	8.5'	2800	2582	1768	12	200
2485 X 3 25" WG	24	24' 6"	23' 3"	25" X 3	8.5'	2800	2580	1780	12	250
2485 X 3 27" WG	24	24' 6"	23' 3"	27" X 3	8.5'	2950	2915	2255	16	300
2685 25"	26	25' 5"	25' 3"	25"	8.5'	2250	2550	2020	14	140
2685 X 3 25" SP	26	26' 6"	25' 3"	25" X 3	8.5'	3000	2877	2063	14	200
2685 X 3 25" WG	26	26' 6"	25' 3"	25" X 3	8.5'	3000	2875	2060	14	275
2685 X 3 27" WG	26	26' 6"	25' 3"	27" X 3	8.5'	3100	3305	2495	18	400





2185 CR





1985 CR II



# GS | Quad Lounge



2385 QL

Boats shown may show optional equipment.



2585 ELW



# GS | Center Console Fish



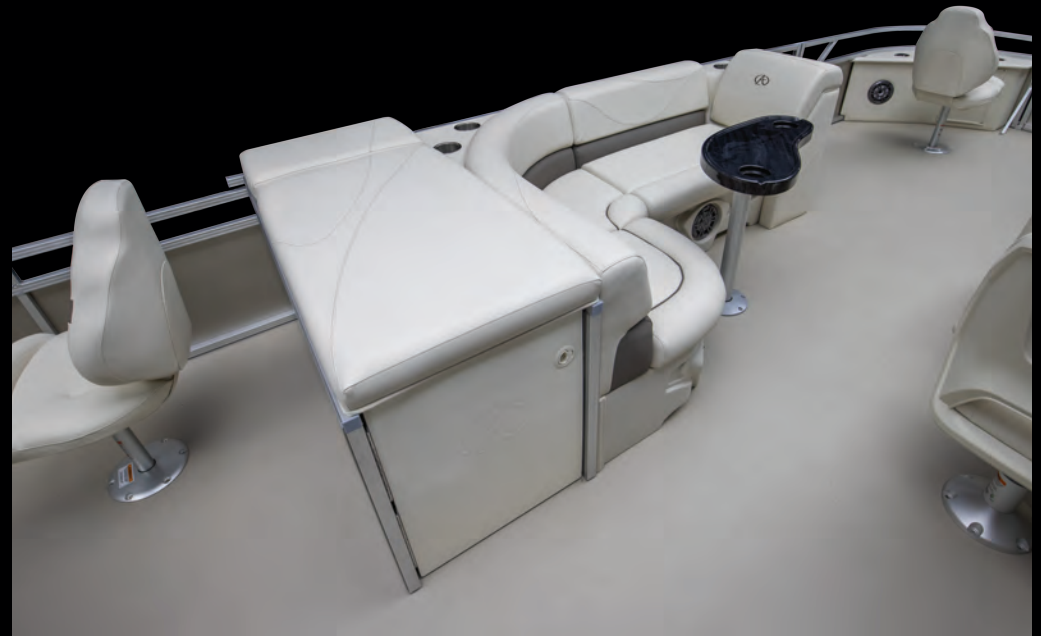
2385 CCF (Shown with Optional Main Chair & Fishing Chairs Upgrade)



GS | Quad Fish



2185 QF



GS | Rear Fish



2385 RF



2385 RF

Boats shown may show optional equipment.



# STANDARD FEATURES & SPECIFICATIONS

## HELMSTAND/ELECTRONICS

- Cadet II Roto Helmstand (except ELW)
- Dual Cadet Roto helmstands with twin windscreens (ELW)
- Tach, Volt, Fuel Gauges
- 12-Volt power point
- Bronze Lite sound package: Fusion RA-60 radio, (2) Fusion EL speakers & grills
- Mechanical steering (no tilt) (except CCF)
- SeaStar hydraulic tilt steering (CCF only)
- Viper steering wheel
- Removeable windshield (except ELW)
- Courtesy light on helmstand

## INTERIOR

- Sport low back driver's chair
- Chair adjustment slider, front, back, rotate
- Full Riptide vinyl flooring
- Stainless steel cup holders
- USB charging port
- Lifetime aluminum seat frames with flow-through ventilation
- Custom designed furnishings using Matrix 50 primary seat vinyl
- Color-matched seat frame cladding
- Suspension seating
- Lounge arms with storage (based on floorplans)
- Vinyl non-skid strips for entry gates

## EXTERIOR

- .040 Heritage external smooth wall panels
- Bimini top with 1¼" square anodized aluminum frame, SST quick release bimini mounts & transport brackets
- USCG navigation lights
- Flat graphic logos
- Gates with lift-n-lay hinges
- Rear telescoping stainless steel ladder (CCF/QF/RF only)
- Rear aluminum ladder (except QF/RF/CCF)

## HULL

- (2) 25" diameter pontoons
- Sport performance package (CCF only)
- 3" rub rail with black rubber insert
- Deck corner impact protection – aluminum
- Tapered front deck
- Extended rear deck (CCF/QF/RF only)
- Pontoon double full risers
- (4) stainless U-bolt & cleat combo

## FUEL

- 25 gallon direct fill transom tank
- 38 gallon direct fill tank in center pontoon (CCF only)

## FISHING

- Garmin Striker 5CV color fishfinder depth finder (CCF only)
- Rear fishing center with rod holders & livewell (CCF/QF/RF only)
- Rod box (CCF only)
- Tackle trays with rear sink & access door (CCF only)



GS	Length Class	Boat Length Overall	Deck Length	Pontoon Diameter	Width	Dry Weight	Max Weight Capacity	Max Persons Pounds	Max Number Persons	Max Engine HP
1985 25"	19	19' 5"	19' 3"	25"	8.5'	1700	1790	1265	10	90
1985 X 3 25" SP	19	20' 6"	19' 3"	25" X 3	8.5'	2050	2155	2255	10	115
1985 X 3 25" WG	19	20' 6"	19' 3"	25" X 3	8.5'	2050	2155	2255	10	115
2185 25"	21	21' 5"	21' 3"	25"	8.5'	1850	2035	1300	10	115
2185 X 3 25" SP	21	22' 6"	21' 3"	25" X 3	8.5'	2750	2240	1300	10	175
2185 X 3 25" WG	21	22' 6"	21' 3"	25" X 3	8.5'	2750	2240	1300	10	175
2385 25"	23	23' 5"	23' 3"	25"	8.5'	2150	2150	1540	11	140
2385 X 3 25" SP	23	24' 6"	23' 3"	25" X 3	8.5'	2800	2582	1768	12	200
2385 X 3 25" WG	23	24' 6"	23' 3"	25" X 3	8.5'	2900	2560	1600	12	250
2385 X 3 27" WG	23	24' 6"	23' 3"	27" X 3	8.5'	3050	2980	1890	13	300
2585 25"	25	25' 5"	25' 3"	25"	8.5'	2450	2430	1770	13	140
2585 X 3 25" SP	25	26' 6"	25' 3"	25" X 3	8.5'	3000	2877	2063	14	200
2585 X 3 25" WG	25	26' 6"	25' 3"	25" X 3	8.5'	3100	2825	2015	14	275
2585 X 3 27" WG	25	26' 6"	25' 3"	27" X 3	8.5'	3200	3270	2460	17	400



# VENTURE | Cruise



1880 CR



1880 CR





# VENTURE | Cruise Rear Bench



2280 CRB (Shown with Optional 2000 Series Furniture)



2280 CRB (Shown with Optional Blackout Package)



# VENTURE | Quad Lounge



2080 QL (Shown with Sandbar Option & Two Rear Commander Chairs)



2280 QL

Boats shown may show optional equipment.

# VENTURE | Fish-N-Cruise





1875 CRBF

VENTURE | Bow Fish



1475 BF



# VENTURE | Quad Fish & Rear Fish



1880 QF



1880 RF





# STANDARD FEATURES & SPECIFICATIONS

## HELMSTAND/ELECTRONICS

- Cadet II Roto Helmstand
- Tach, Volt, Fuel Gauges
- 12-Volt power point
- Bronze sound package: Fusion RA-60 radio, (4) Fusion EL speakers & grills
- Viper steering wheel
- Removeable windshield (except ELW)
- Courtesy light on helmstand

## INTERIOR

- Sport low back driver's chair
- Chair adjustment slider, front, back, rotate
- Full Riptide vinyl flooring
- Stainless steel cup holders
- Greywood small kidney thermoform table
- USB charging port
- Lifetime aluminum seat frames with flow-through ventilation
- Custom designed furnishings using Matrix 50 primary seat vinyl
- Color-matched seat frame cladding
- Suspension seating
- Lounge arms with storage (based on floorplans)
- Vinyl non-skid strips for entry gates

## EXTERIOR

- .040 Heritage external smooth wall panels
- Bimini top with 1¼" square anodized aluminum frame, SST quick release bimini mounts & transport brackets
- USCG navigation lights
- Flat graphic logos
- Gates with lift-n-lay hinges
- Rear aluminum ladder

## HULL

- (2) 23" diameter pontoons
- 3" rub rail with black rubber insert
- Deck corner impact protection - aluminum
- Tapered front deck
- Pontoon double full risers
- (4) stainless U-bolt & cleat combo

## FUEL SYSTEM OPTIONAL

## FISHING

- Livewell in bench (BF & CRBF only)
- Rear fishing center with rod holders & livewell (FNC, QF & RF only)



VENTURE	Length Class	Boat Length Overall	Deck Length	Pontoon Diameter	Width	Dry Weight	Max Weight Capacity	Max Persons Pounds	Max Number Persons	Max Engine HP
1475	14	15' 5"	14'	23"	7.5'	1150	1170	800	5	40
1475 X 3 25" SP	14	16' 6"	14'	25" X 3	7.5'	1250	1600	1040	7	60
1675	16	17' 5"	16'	23"	7.5'	1350	1350	950	6	50
1675 X 3 25" SP	16	18' 6"	16'	25" X 3	7.5'	1700	1860	1300	9	90
1875	18	19' 5"	18'	23"	7.5'	1600	1575	1050	7	75
1875 X 3 25" SP	18	20' 6"	18'	25" X 3	7.5'	1950	2100	1440	10	115
2080	20	21' 5"	20'	23"	8'	1750	1805	1250	9	90
2080 X 3 25" SP	20	22' 6"	20'	25" X 3	8'	2200	2370	1710	12	175
2280	22	23' 5"	22'	23"	8'	2000	2000	1450	10	100
2280 X 3 25" SP	22	24' 6"	22'	25" X 3	8'	2800	2582	1768	12	200
2280 X 3 25" WG	22	24' 6"	22'	25" X 3	8'	2800	2580	1780	12	250



# VLS | Quad Lounge



2080 QL (Shown with Optional Platinum Edition Upgrade)





1880 CR

# VTX | Quad Fish

BOUTIQUE COLLECTION



1880 QF

VTX



# STANDARD FEATURES & SPECIFICATIONS

## HELMSTAND/ELECTRONICS

- Cadet II Roto Helmstand
- Tach, Volt, Fuel Gauges
- 12-Volt power point
- Bronze sound package: Fusion RA-60 radio, (4) Fusion EL speakers & grills
- Mechanical Tilt Steering
- Viper steering wheel
- Removeable windshield
- Courtesy light on helmstand

## INTERIOR

- Sport low back driver's chair
- Chair adjustment slider, front, back, rotate
- Full Riptide vinyl flooring
- Stainless steel cup holders
- Greywood small kidney thermoform table
- USB charging port
- Lifetime aluminum seat frames with flow-through ventilation
- Custom designed furnishings using Matrix 50 primary seat vinyl (choose bucksin, conch shell, graphite, silver or white)
- Color-matched seat frame cladding
- Suspension seating
- Lounge arms with storage (based on floorplans)
- Vinyl non-skid strips for entry gates
- Small built-in trash can (where possible)

## EXTERIOR

- .040 Heritage external smooth wall panels
- Bimini top with 1½" square anodized aluminum frame, SST quick release bimini mounts & transport brackets
- USCG navigation lights
- Flat graphic logos
- Gates with lift-n-lay hinges
- Rear aluminum ladder
- Playpen cover

## HULL

- (2) 25" diameter pontoons
- 3" rub rail with black rubber insert
- Deck corner impact protection - aluminum
- Tapered front deck
- Pontoon double full risers
- (4) stainless U-bolt & cleat combo

## FUEL

- 25 gallon direct fill transom tank

## HELMSTAND/ELECTRONICS

- Cadet II Roto Helmstand
- Tach, Volt, Fuel Gauges
- 12-Volt power point
- Bronze sound package: Fusion RA-60 radio, (4) Fusion EL speakers & grills
- Mechanical Tilt Steering
- Viper steering wheel
- Removable windshield
- Courtesy light on helmstand

## INTERIOR

- Sport low back driver's chair
- Chair adjustment slider, front, back, rotate
- Full Riptide vinyl flooring
- Stainless steel cup holders
- Greywood small kidney thermoform table
- USB charging port
- Lifetime aluminum seat frames with flow-through ventilation
- Custom designed furnishings using Matrix 50 primary seat vinyl (choose bucksin, conch shell, graphite, silver or white)
- Color-matched seat frame cladding
- Suspension seating
- Lounge arms with storage (based on floorplans)
- Vinyl non-skid strips for entry gates
- Small built-in trash can (where possible)

## EXTERIOR

- .040 Heritage external smooth wall panels
- Bimini top with 1½" square anodized aluminum frame, SST quick release bimini mounts & transport brackets
- USCG navigation lights
- Flat graphic logos
- Gates with lift-n-lay hinges
- Rear aluminum ladder
- Playpen cover

## HULL

- (2) 25" diameter pontoons
- 3" rub rail with black rubber insert
- Deck corner impact protection - aluminum
- Tapered front deck
- Pontoon double full risers
- (4) stainless U-bolt & cleat combo

## FUEL

- 25 gallon direct fill transom tank

## QUAD FISH

- Rear fishing center with rod holders & livewell
- (4) fishing chairs

## VLS

2280



2080



1880



VLS	Length Class	Boat Length Overall	Deck Length	Pontoon Diameter	Width	Dry Weight	Max Weight Capacity	Max Persons Pounds	Max Number Persons	Max Engine HP
1880 25"	18	19' 5"	18'	25"	8'	1650	1835	1475	10	90
2080 25"	20	21' 5"	20'	25"	8'	1800	2035	1380	10	115
2280 25"	22	23' 5"	22'	25"	8'	2050	2260	1600	11	140

## VTX

1880



1680



VTX	Length Class	Boat Length Overall	Deck Length	Pontoon Diameter	Width	Dry Weight	Max Weight Capacity	Max Persons Pounds	Max Number Persons	Max Engine HP
1680 25"	16	17' 5"	16'	25"	8'	1425	1580	1050	7	60
1880 25"	18	19' 5"	18'	25"	8'	1650	1835	1475	10	90





# GALLERY OF FEATURES & OPTIONS

			WAKETOON	EXCALIBUR	CATALINA PLATINUM	CATALINA	LSZ	GS	VENTURE	VLS	VTX
HELMSTANDS	Commander - Analog	H1	*	*	W	O	*	*	*	*	*
	Commander - Smart80	H2	*	*	O	O	*	*	*	*	*
	Commander - Medallion Touchscreen	H3	S	S	O	O	*	*	*	*	*
	Ensign 2	H4	*	*	S	S	*	*	*	*	*
	Ensign 2 - Smart 80 Touchscreen	H5	*	*	O	O	*	*	*	*	*
	Crew - Fiberglass	H6	*	*	*	*	O	*	*	*	*
	Crew - Roto	H7	*	*	*	*	S	*	*	*	*
	Crew - Smart 80 Touchscreen	H8	*	*	*	*	O	*	*	*	*
	Cadet 2 - Fiberglass	H9	*	*	*	*	*	O	O	O	O
	Cadet 2 - Roto	H10	*	*	*	*	*	S	S	S	S
	Cadet - Windshield	H11	*	*	*	*	W	W	S	S	S
	Center Console	H12	*	*	*	*	*	CF	*	*	*
FURNISHINGS	5000 Series Ultrafine	F3	S	S	S	*	*	*	*	*	*
	5000 Series Ultrafine DETAIL	F4	S	S	S	*	*	*	*	*	*
	4000 Series	F5	*	*	*	S	O	*	*	*	*
	4000 Series DETAIL	F6	*	*	*	S	O	*	*	*	*
	2000 Series	F7	*	*	*	*	S	O	O	*	*
	2000 Series DETAIL	F8	*	*	*	*	S	O	O	*	*
	1000 Series	F9	*	*	*	*	*	S	S	S	S
	1000 Series DETAIL	F10	*	*	*	*	*	S	S	S	S

S = Standard    O = Option    \* = Not Available    W = Standard on Windshield Model    CF = Center Console Fish Only





H3



H4



H5



H6



H9



H10



H11



H12



F5



F6



F7



F8





# GALLERY OF FEATURES & OPTIONS

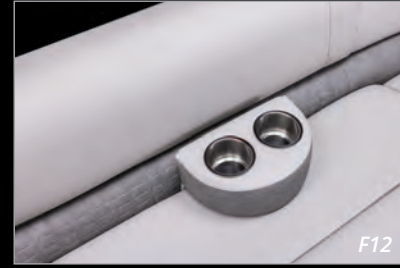
			WAKETOON	EXCALIBUR	CATALINA PLATINUM	CATALINA	LSZ	GS	VENTURE	VLS	VTX
FURNISHING FEATURES	Moveable Cup Holder - SST Cups	F12	S	S	S	S	O	O	O	.	.
	Bow Filler Bench	F13	.	O	O	O	O	.	.	.	.
	Ottoman Cooler	F14	.	O	O	O	O	O	O	.	.
	Floor Matting Under Bench	F16	S	S	S	O	O	O	O	.	.
	Deco Seat Cladding - BRONZE	F17	S	S	S	S	S	O	O	.	.
	Deco Seat Cladding - COGNAC	F17.1	O	O	O	O	O	O	O	.	.
	Deco Seat Cladding - PEWTER	F17.2	O	O	O	O	O	O	O	.	.
	CONCH SHELL Color Matched Seat Cladding	F18	O	O	O	O	O	O	O	O	O
	SILVER color Matched Seat Cladding	F18.1	O	O	O	O	O	O	O	O	O
	WHITE Color Matched Seat Cladding	F18.2	O	O	O	O	O	S	S	S	S
	BUCKSKIN Color Matched Seat Cladding	F18.3	O	O	O	O	O	O	O	O	O
SST Vent Covers for Seat Cladding	F19	S	S	S	O	O	O	O	.	.	
Privacy Curtain & Frame (Location Varies)	F20	.	SF	SF	SF	O*	O*	O*	O*	O*	
Trash Can Built in	F21	S	S	SF	SF	O*	.	.	.	.	
ENTERTAINMENT	Booth Bar w/Flip Back Seats, Cooler, Phone Chargers, & Trash Can	F25	.	.	SE	O	.	.	.	.	.
	Bar with Stools, Cooler, Phone Chargers, Trash Can	F25.1	.	.	.	SE	.	.	.	.	.
	Oversize Stationary Table	F25.2	.	.	.	.	SE	.	.	.	.
	Port Rear Fiberglass Prep Center w/Refrigerator & Sink	F25.3	.	ELW	ELW	.	.	.	.	.	.
	Port Rear Prep Center w/Built In Cooler & Sink	F25.4	.	.	.	.	ELW	.	.	.	.
Wash Down Kit	F26	.	O	O	O	O	O	O	.	.	
TABLES	Large Heavy Duty Curved Greywood Table	F27	.	O	SF	SF	SF	O	O	.	.
	Large Heavy Duty Rectangle Greywood Table	F28	.	S	SF	SF	SF	O	O	.	.
	Small Greywood Curved Table	F29	.	.	.	.	.	O	S	S	S
CHAIRS	Admiral Recliner with Flip Up Bolster	C1	S	O	O	O	O	O	O	.	.
	Admiral Recliner with Slide & Swivel with Color Accents	C2	.	S	S	.	.	.	.	.	.
	Admiral Recliner with Slide & Swivel	C2.1	.	.	.	O	O	O	O	.	.
	Sport High Back with Arms	C3	.	.	.	O	O	O	O	.	.
	Commander Recliner	C4	.	.	.	S	O	O	O	O	O
	Sport Low Back with Arms	C5	.	.	.	.	S	O	O	.	.
	Sport Low back	C6	.	.	.	.	.	S	S	S	S
	Fishing	C7	.	.	.	F	F	F	F	.	F
	Adjustable Height Pedestal	C10	S	S	S	O	O	O	O	.	.
	FINISH OPTIONS	VRB Rear Railing & Chain Across Entry	W4	.	.	S	O	O	.	.	.
Composite Interior Wall Covers		W7	S	S	S	S	.	.	.	.	.
Blackout Package Walls, Rubrail, Corners, & Top Frame		P8	O	S	O	O	O	O	O	.	.

S = Standard  
O = Option

. = Not Available  
SF = Standard Depending on Floorplan

F = Standard on Fish Models Only  
SE = Standard on Entertainer

ELW = Elite Windshield  
O\* = Option Depending on Floorplan



F12



F13



F18



F18.1



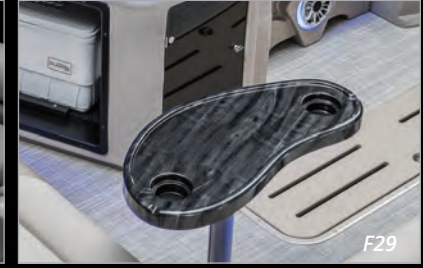
F21



F25



F28



F29



C5



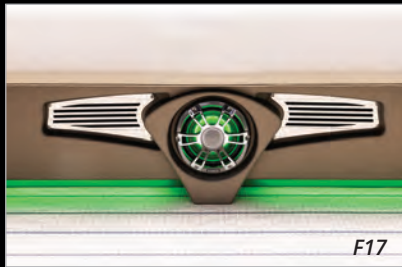
C6



F14



F16



F17



F17.1



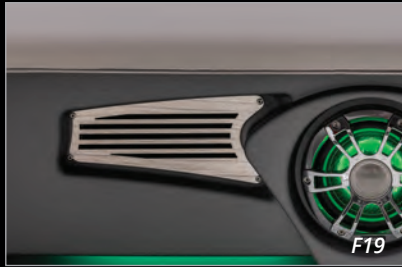
F17.2



F18.2



F18.3



F19



F20



F27



F25.1



F25.2



F25.3



F25.4



F26



C1



C2



C2.1



C3



C4



C7



W4



W7



P8





# GALLERY OF FEATURES & OPTIONS

		WAKETOON	EXCALIBUR	CATALINA PLATINUM	CATALINA	LSZ	GS	VENTURE	VLS	VTX
<b>ELECTRONICS</b>	<b>PREMIUM Sound Package:</b> Fusion RA-770 Radio, (6) CL-655 Lighted Speakers, 6-Channel Amp, Fusion D Mono Block Digital Amp, 10" Subwoofer, USB Audio Input and Charge	E1	S	O	O	O	O	O	O	O
	<b>EXGT Sound Package:</b> Medallion Touch screen stereo (6) CL-655 Lighted RGB Speakers & Grills, Fusion 6-Channel Amp, USB Audio Input and Charge	E1.5	*	S	*	*	*	*	*	*
	Arch & Tower Cannister speakers for Premium Sound System - Black	E2	O	O	O	O	O	O	O	O
	Arch & Tower Cannister speakers for Premium Sound System - White	E2.5	O	O	O	O	O	O	O	O
	<b>High Performance Sound Package:</b> Fusion RA-670 receiver, (6) blue lighted XS speakers, 5-channel amp, 10" subwoofer & USB audio input and charge	E3	*	*	O	O	O	O	O	O
	High Performance Arch & Tower Canister Speakers for High Performance Sound System	E4	*	*	O	O	O	O	O	O
	<b>Gold Plus sound Package:</b> Fusion RA-670 Radio, (6) Fusion XS LED Lighted blue Speakers & Grills, Fusion 5-Channel Amp, USB Audio Input and Charge	E5	*	*	S	OV	*	*	*	*
	<b>Gold Sound Package:</b> Fusion RA-670 Radio, (4) Fusion XS Speakers, (4) Fusion XS Speaker Grills, USB Audio Input and Charge	E6	*	*	*	S	*	*	*	*
	<b>Silver Plus Sound Package:</b> (6) Fusion EL Speakers & Grills, Fusion 4-Channel Amp, Fusion RA-210 Radio, USB Audio Input and Charge	E7	*	*	*	*	OV	*	*	*
	<b>Silver Sound Package:</b> Fusion RA-210 Radio (4) Fusion EL Speakers (4) Fusion EL Speaker Grills, USB Audio Input and Charge	E8	*	*	*	*	S	*	*	*
	<b>Bronze Plus Sound Package:</b> Fusion RA-55 stereo, (6) EL speakers, 4-channel amp	E9	*	*	*	*	*	O	O	*
	<b>Bronze Sound Package:</b> Fusion RA-55 Radio, (4) Fusion EL Speakers, (4) Fusion EL Speaker Grills	E10	*	*	*	*	*	O	S	S
	<b>Bronze Lite Sound Package:</b> Fusion RA-55 Radio, (2) Fusion EL Speakers, (2) Fusion EL Speaker Grills	E10.5	*	*	*	*	*	S	*	*
	USB/AUX Combined Input	E12	S	S	S	S	S	*	*	*
	Dual USB charging port on dash	E17	S	S	S	S	O	O	O	O
	USB charging Ports (Located in Furniture)	E17.5	S	S	S	S	S	S	S	S
	Garmin 743 XSV	E18	S	S	O	O	O	*	*	*
Garmin 73 CV GPS	E21	*	*	S	O	O	O	O	O	
Garmin 5CV Fish/Depth	E22	*	*	*	F	O	O	O	O	
Vee Three Depth Gauge	E23	*	*	*	O	O	O	O	O	
<b>LIGHTING</b>	RGB Interior & Exterior Light Package	L1	S	S	O	O	O	O	O	O
	RGB Interior Light Package	L2	*	*	O	O	O	O	O	O
	Blue Ice Interior Light Package	L3	*	*	S	O	O	O	O	O
	Blue Interior Mood Lights	L5	*	*	S	O	O	O	O	O
	Blue Under Rubrail Lights	L6	*	*	O	O	O	O	O	O
	Rear Underwater Lights	L7	*	S	O	O	O	O	O	O
	Lighted Chrome Air Vents	L8	*	*	O	O	*	*	*	*
	Lighted Blackout Air Vents	L9	*	*	*	O	*	*	*	*
	Blue lighted cup holders - entire boat	L10	*	S	S	O	O	O	O	O
	EGT Docklights	L11	*	S	*	*	*	*	*	*
	Deco Built In Docklights	L12	S	*	S	O	*	*	*	*
	LED Accent Built In Chrome Docklights	L13	*	*	*	O	O	O	O	O
	LED Accent Built In Blackout Docklights	L14	*	*	*	O	O	O	O	O
	90° Chrome Built In Docklights	L15	*	*	*	*	*	*	O	O
Black 90° Chrome Built In Docklights	L16	*	*	*	*	*	*	O	O	
Chrome Wall Mount Nav/Dock Light	L17	*	*	*	S	O	O	O	O	

S = Standard      \* = Not Available      F = Standard on Fish Models Only  
 O = Option      OV = Option but Standard on VRL & VRB Floorplans      QF = Quad Fish



E1



E2



E8



E9



E18



E21



L5



L6



L12



L13





E2.5



E3



E5



E6



E7



E10



E10.5



E12



E17



E17.5



E22



E23



L1



L2



L3



L7



L8



L9



L10



L11



L14



L15



L16



L17





# GALLERY OF FEATURES & OPTIONS

			WAKETOON	EXCALIBUR	CATALINA PLATINUM	CATALINA	LSZ	GS	VENTURE	VLS	VTX
TOPS	Bimini Top - Electric (Rear Only)	B9	*	O	OXF	OXF	O	O	*	*	*
	Bimini Top - Blackout 1-1/4" Square Anodized Frame	B10	*	*	*	OXF	O	O	O	*	*
	Bimini Top - 1-1/4" Square Anodized Frame	B10.5	*	*	*	SXF	S	S	S	S	S
	Bimini Top - D-Rail Anodized Frame	B11	*	*	SXF	*	*	*	*	*	*
	Bimini Top - D-Rail Blackout Frame	B11.5	*	S	OXF	*	*	*	*	*	*
	Bow Mount Bimini Top (Matches Rear Frame)	B12	*	O	O	O	O	O*	O*	*	*
	Bimini Top for Funship Roof	B13	*	*	OFS	OFS	*	*	*	*	*
	Deco Uprights for Funship Roof	B14	*	*	OFS	*	*	*	*	*	*
CANVAS	Full Camper Enclosure	B15	*	*	O	O	O	O	*	*	*
	Half Camper Enclosure	B16	*	*	O	O	O	O	*	*	*
	Seat Covers	B17	O	O	O	O	O	O	O	*	*
	Full Mooring Cover	B18	S	S	S	O	O	O	*	*	*
	Funship Upper Deck Mooring Cover	B19	*	*	S	OFS	*	*	*	*	*
	Playpen Cover	B20	*	*	*	*	*	*	O	S	S
FISHING	Livewell Under Bench	M1	*	O	O	O	O	O	CRBF	*	*
	Extra Large Livewell/Baitwell Combo (eliminates star gate on GS)	M2	*	*	*	OF	OF	OF	*	*	*
	Rod Box	M3	*	*	*	OF	OF	CF, OF	*	*	*
	Helmstand Livewell	M4	*	*	*	QF	*	*	*	*	QF
	Large Rear Fishing Center w/Livewell	M5	*	*	*	F	F	F	*	*	*
	Small Rear Fishing Center w/Livewell	M6	*	*	*	*	*	*	SF	*	QF
	Baitwell Under Bench	M7	*	*	*	*	*	*	BF	*	*
	Built In Tackle Trays	M8	*	*	*	F	*	CF	*	*	*
	Sink w/External Water Supply	M9	*	*	*	F	*	CF	*	*	*
STEERING	Mazzo Wheel	S1	S	S	S	O	O	O	O	*	*
	Black soft Grip with Chrome Spokes Wheel	S2	*	*	*	S	O	O	O	O	O
	Black Soft Grip Wheel	S3	*	*	*	*	S	O	O	*	*
	Viper Wheel	S4	*	*	*	*	*	S	S	S	S
	Seastar Hydraulic	S6	S	S	O, #	O	O	O	O	*	*
	Baystar Hydraulic	S7	*	*	O	FS	O	O	O	O	O
	MISC.	Pull Up SST Cleats	D1	S	S	S	O	O	O	O	*
Extended Rear Patio Pad		D4	*	O	O	O	O	O	O	*	*
Sandbar Rear Deck		D5	*	*	O*	O*	O*	O*	O*	*	*
Diving Board Lollipop		D9	*	O	O	O	O	O	O	*	*
Ladder SST Telescoping		D10	S	S	S	S	S	F	*	*	*
Ladder Aluminum Anodized 4 Step		D10.5	*	*	*	*	*	S	S	S	S
Ski Tow Bar Universal		D14	S	S	O, #	O	O	O	O	O	O

S = Standard  
 O = Option  
 \* = Not Available  
 CF = Center Console Fish Only  
 # = Standard Equipment on Triple Pontoon Models  
 FS = Standard on Funship Model

SF = Standard Depending on Floorplan  
 F = Standard on Fish Models Only  
 OF = Option on Fish Models Only  
 OFS = Option on Funship Only  
 SXF = Standard Except Funship  
 OXF = Option Except Funship

QF = Quad Fish  
 O\* = Option Depending on Floorplan  
 CRBF = Standard on CRBF Only  
 BF = Standard on BF Only



B9



B10



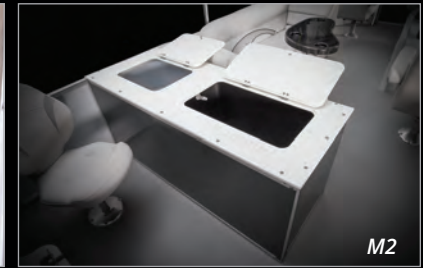
B14



B15



M1



M2



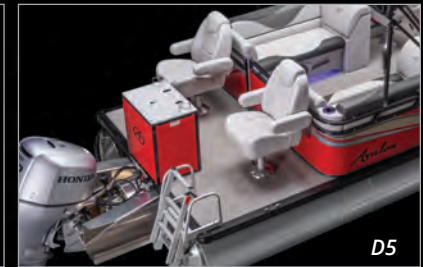
M8



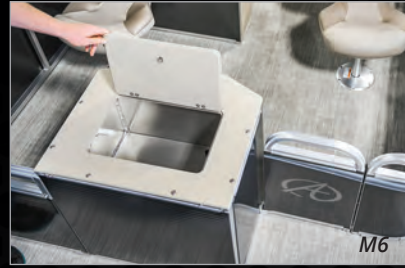
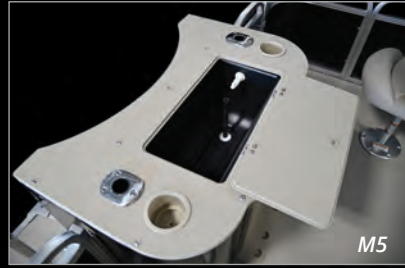
M9



D4



D5





# GALLERY OF FEATURES & OPTIONS | Performance & Watersports



T1

## 25" OR 27" WAVEGLIDER PACKAGE

Recommended for those desiring maximum weight and wave handling, maximum speed and performance, maximum HP and maximum performance features. Includes integrated motor pod, 58-gallon built-in fuel tank, 6 lifting fins, wave shield, ski tow bar and SeaStar hydraulic steering.



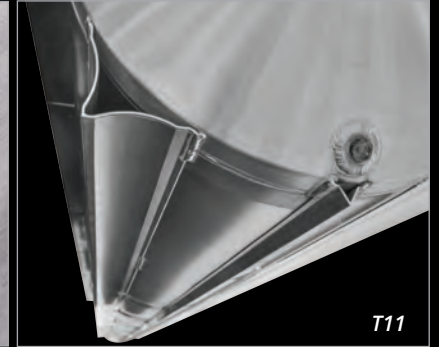
T2

## 25" SPORT PERFORMANCE PONTOON PACKAGE

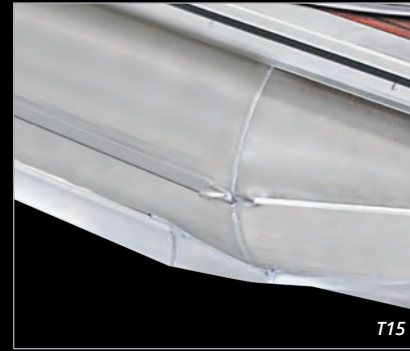
Recommended for those desiring an economical 150HP - 200 HP equipped boat with very good weight and wave handling as well as very good performance. Includes integrated motor pod, 38-gallon transom direct fill fuel tank, 4 lifting fins, wave shield and SeaStar hydraulic steering (does not include a ski tow bar). **MAXIMUM HP RATING IS 200 HP.**



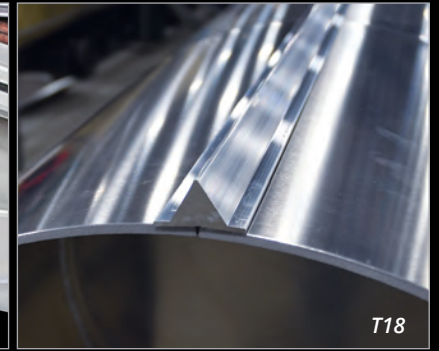
T10



T11



T15



T18

			WAKETOON	EXCALIBUR	CATALINA PLATINUM	CATALINA	LSZ	GS	VENTURE	VLS	VTX
WATER SPORTS	GX TOWER - Power Hinged	B1	•	○	•	•	•	•	•	•	•
	GX TOWER - Half Enclosure - Clear	B2	•	○	•	•	•	•	•	•	•
	GX TOWER - 2nd Bimini Top	B3	•	○	•	•	•	•	•	•	•
	EXTREME TOWER - Power hinged	B4	S	•	•	•	•	•	•	•	•
	EXTREME TOWER - Wakeboard Racks	B5	○	•	•	•	•	•	•	•	•
	DECO SPORT ARCH - 2.5" Round Frame - Stationary	B6	•	○	O*	O*	O*	O*	•	•	•
	DECO SPORT TOWER - 2.5" Round Frame - Hinged Collapsible	B7	•	○	O*	O*	O*	O*	•	•	•
	EX TOWER - Power Hinged	B8	•	•	O*	O*	O*	O*	•	•	•
PERFORMANCE PACKAGES	27" Waveglider Package	T1	•	S	FS	○	○	○	•	•	•
	25" Waveglider Package	T1	•	•	O, W	○	○	○	O*	•	•
	25" Sport Performance Pontoon Package	T2	•	•	○	○	O, W	○	O*	•	•
	25" Transom		•	•	•	•	•	•	•	•	•
	In Floor Ski Storage	T10	S	•	•	•	•	•	•	•	•
	HPP Lifting Fins	T11	•	S	W, FS	•	•	•	•	•	•
	Side Protector Keel	T15	S	S	S	•	•	•	•	•	•
	Solid Bottom Keels	T18	○	•	•	•	•	•	•	•	•

S = Standard  
○ = Option

• = Not Available  
W = Standard on Windshield Model

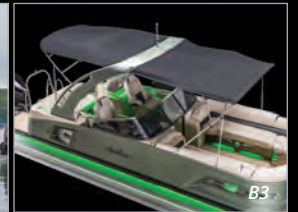
O\* = Option Depending on Floorplan  
FS = Standard on Funship Model



B1



B2



B3



B4



B5



B6



B7



B8



## AMAZING SPEED, THE SMOOTHEST RIDE, & TWIN ENGINE DEPENDABILITY

### Available on:

- Excalibur – All floor plans (Twin 450 requires Mercury Joystick controls)
- Catalina Platinum 2585 & 2785 ENT, QL, QLW, RL, RJ, VRB, EVRBW & ELW (Requires 27" Waveglider)
- Catalina 2585 & 2785 ENT, QL, RL, RJ, EL, VRB & VRL (Requires 27" Waveglider)

### Includes:

- Twin Motor Mounts with Dual Pre Rig Controls
- Center Tube Step with Built in Ladder
- 4 Waveglider Lifting Fins for Maximum Twin Engine Turning
- 100 gallon fuel tank
- 5 Year Structural Warranty

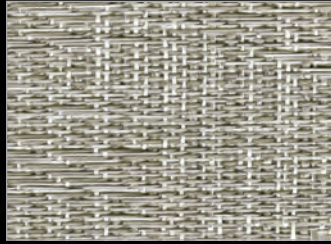
TWIN ENGINE CAPACITIES	Max Weight Capacity	Max Persons Pounds	Max Number Persons	Max Engine HP
2785 x 3 27" WG Twin	3190	1350	10	900
2785 x 3 27" WG Twin (RL, VRB, VRL)	3190	1350	10	700
2585 x 3 27" WG Twin	3150	1300	9	800
2585 x 3 27" WG Twin (RL, VRB, VRL)	3150	1300	9	600



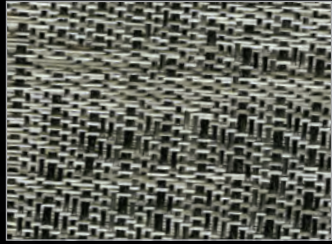


GALLERY OF FEATURES & OPTIONS | Colors

FLOORING



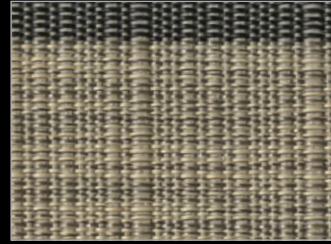
*Silverwood*



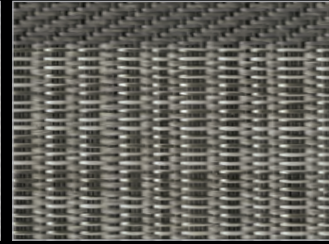
*Boardwalk*



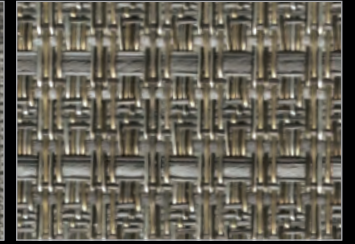
*Driftwood*



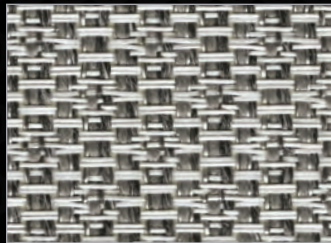
*Natural Teak*



*Slate Teak*



*Luna Sand*



*Luna Pearl*



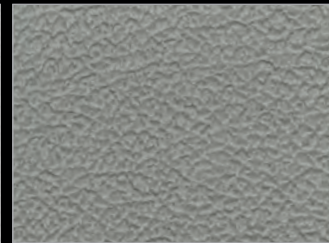
*Riptide Dune*



*Riptide Shadow*

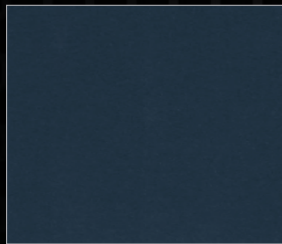


*Taupe*

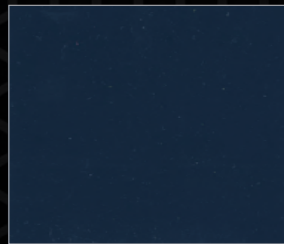


*Gray*

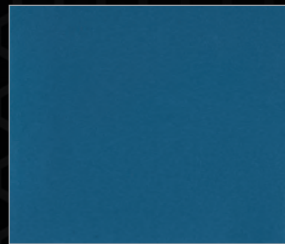
WALL COLORS (ALL MODELS)



*Steel Blue*



*Blue*



*Caribbean Blue*



*Black*



*Charcoal*



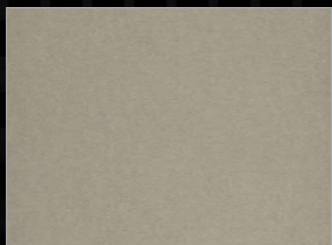
*Silver*



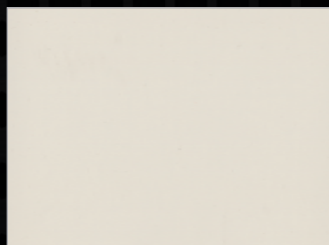
*Sage Metallic*



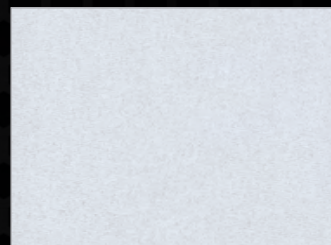
*Bronze*



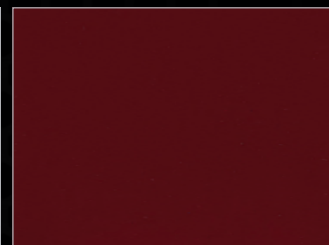
*Champagne*



*White*



*White Flake*



*Burgundy*



*Red*

PRIMARY VINYL



*Graphite*

*Silver*

*Buckskin*

*Conch Shell*

*White*

*Cognac  
(Base 2 Vinyl Only)*

ULTRAFINE PRIMARY VINYL



*Ultrafine Graphite*

*Ultrafine Silver*

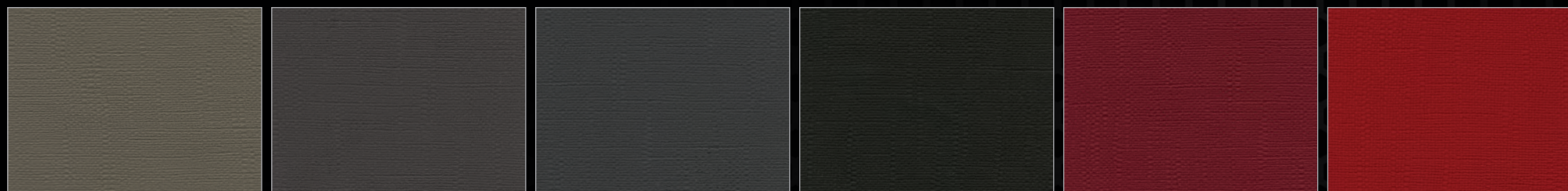
*Ultrafine Buckskin*

*Ultrafine Conch Shell*

*Ultrafine White*

*Ultrafine Cognac  
(Base 2 Vinyl Only)*

ACCENT VINYL



*Neutra*

*Topsail*

*Charcoal*

*Black*

*Burgundy*

*Red*



*Oak Barrel*

*Saddle*

*Stone*

*Indigo*

*Caribbean Blue*





The NMMA-Certified label on an Avalon pontoon boat lets you know it was built to meet, and often exceed, the industry's strictest quality and safety standards for critical components, such as electrical systems, powering, flotation, fuel systems, and navigation lights. Certified boats must also pass rigorous annual inspections from independent third-party inspectors. According to U.S. Coast Guard statistics, NMMA-Certified boats have been shown to be safer than non-certified boats.

*Avalon*  
LUXURY PONTOON BOATS



A proud supporter of the  
**Travis Mills Foundation**  
foundation@travismills.org  
"Never give up. Never quit."



Like us on  
**Facebook**

[www.facebook.com/AvalonPontoons](http://www.facebook.com/AvalonPontoons)



Avalon's exclusive MATRIX 50 heavy-duty marine seat coverings are tested strongest against tears, punctures, and stains.

OFFICIAL AVALON MERCHANDISE  
[www.attoonshop.com](http://www.attoonshop.com)

PURE MICHIGAN®



903 Michigan Avenue, Alma, Michigan 48801  
Toll Free: 800.334.2913 | 989.463.2112 | Fax: 989.463.8226  
[www.avalonpontoons.com](http://www.avalonpontoons.com)

Dimensions, capacities, ratings, and additional specifications plus complete warranty and service information are available from your Avalon dealer. Product illustrations and data within this catalog are based upon information available at the time of publication. Avalon reserves the right to make changes without notice or obligation. Ask your local Avalon dealer for the most current product specifications prior to purchase. Some of the equipment shown separately or on products illustrated in this catalog may be optional at extra cost. All Avalon boats meet or exceed the standards established by the ABYC and USCG flotation, fuel systems, ventilation, electrical, and safety.



Avalon's superior innovation and customer satisfaction is recognized by the NMMA CSI AWARD for 2008 through 2021 and the Marine Industry 2012 and 2020 Innovation Awards!