

Avalon

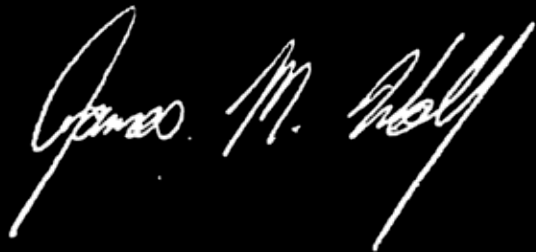
50 YEARS *Avalon* 2023

I am extremely proud to be at the helm of this incredible company as we celebrate our 50th year of building great boats! Our dedication to excellence has propelled us from a very humble beginning to what we have become today. As I have always said, we don't strive to be the biggest, we simply strive to be the best. Avalon has always been years ahead of its time, playing an outsized role in pioneering innovations that ultimately produce incredible boats for our amazing customers.

Our company has always been blessed with a strong team of highly dedicated and motivated individuals – many of whom have spent most of their careers with us. Our success is their achievement for which we, the owners, are grateful. I thank every one of our team members, dealers and supply partners for your resilience, commitment, and incredible talent!

Although much has changed over the years, some things remain the same and will never change. Avalon is still a family owned and operated business with an extremely strong foundation. Our vertical integration manufacturing strategy means that we produce most of our components in-house instead of outsourcing production to others. We highly value the personal nature of our business relationships and the trust that our customers place in us.

So, as we embark on the next phase of our journey, we will work hard at continuing to honor these principles that have led to our success. We look forward to continuing our relationships with you and remain committed to providing all our customers with the innovative products you demand as well as the excellent service and support that you deserve.



JAMES WOLF | CEO









THE ART OF THE PONTOON
TABLE OF CONTENTS

Waketoon 1-4

Excalibur 5-8

- Elite Windshield
- Elite Windshield Port Chair
- Quad Lounge Windshield

Excalibur LTD 9-12

- Elite Windshield
- Elite Windshield Port Chair
- Quad Lounge Windshield

Catalina 13-26

- Cruise
- Rear J Lounge
- Elite
- Elite Windshield
- Versatile Rear Bench
- Versatile Rear Bench Windshield
- Versatile Rear Lounge
- Rear Lounge
- Quad Lounge
- Quad Lounge Windshield
- Entertainer
- Entertainer Funship
- Cruise Funship
- Quad Fish
- Rear Fish

LSZ 27-40

- Cruise
- Cruise II
- Cruise Rear Bench
- Quad Lounge
- Entertainer
- Elite
- Elite Windshield
- Versatile Rear Bench
- Versatile Rear Bench Windshield
- Versatile Rear Lounge
- Rear Lounge
- Rear Fish

Venture 85 41-46

- Cruise
- Cruise II
- Quad Lounge
- Quad Fish
- Rear Fish
- Center Console Fish
- Elite Windshield

Venture 47-54

- Cruise
- Cruise II
- Quad Lounge
- Cruise Bow Fish
- Bow Fish
- Fish N Cruise
- Rear Fish
- Quad Fish

VLS/VTX 55-58

- Quad Lounge
- Cruise
- Quad Fish

GALLERY OF FEATURES & OPTIONS

Features & Options 59-66
 Twin Engine Option 67
 Performance & Watersports 68
 Color Options 71-72

More models may be available. Please review line drawings for all available models.



WAKETOON



Boats shown may show optional equipment.



WAKETON



Boats shown may show optional equipment.



STANDARD FEATURES & SPECIFICATIONS

HELMSTAND/ELECTRONICS

- Dual Commander fiberglass helmstands with full windshield, upholstered automotive-stitched trim, & touch-screen dash panel with detailed information center, USB charging ports & light controls
- (2) 12-Volt power points
- Garmin 743XSV GPS
- Premium sound package: Fusion RA-770 radio, (6) Fusion SG RGB-lighted speakers & grills, Fusion 6-channel amp, Fusion D mono block digital amp, 10" Fusion Subwoofer, USB audio input & charge
- Steering - SeaStar hydraulic tilt
- Superior steering wheel
- Courtesy light on helmstand
- Battery dual smart switch system

INTERIOR

- Sport High Back reclining driver's chair with flip-up bolster & color-matched accents
- Chair adjustment slider, front, back, rotate
- Interior composite wall panels
- Full Riptide vinyl flooring
- RGB lighted cup holders & mood lighting
- USB charging port
- Trash can built into lounge arm
- Lifetime aluminum seat frames with flow-through ventilation
- Seat frame floor matting
- Ultrafine touch seat vinyl
- Deluxe seat frame cladding with SST vents
- (2) moveable cupholders
- Suspension seating

FUEL

- 64 gallon remote fill center tube
- SST gas cap & vent

BUILT-IN POWER

- Mercury 350HP 6.2L V-8 I/O

WATERSPORTS FEATURES

- Touchscreen automatic & manual wake controls: adjustable electric actuators to press Waveshaper fins, multiple adjustment angles for precise wave definition preferences & ability to preset mph to user specifications
- Xtreme electric sport tower with RGB tower lights, bimini top & wakeboard racks
- Ski tow bar
- Rear view surf camera
- Integrated rear swim platform

EXTERIOR

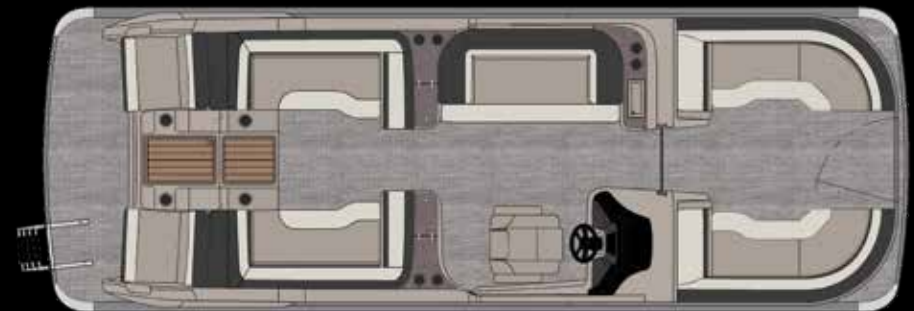
- Deco 2 external smooth multi-panel retro two-tone walls
- USCG navigation lights
- RGB deco built-in docklights
- RGB rubrail lights
- RGB rear underwater lights
- Hi-flex bold chrome logos
- Gates with lift-n-lay hinges & SST EZ lift latch
- Premium stainless steel telescoping ladder
- Quick-release fender holders with straps
- Full color-matched mooring cover

HULL

- Patented Wakesurf triple pontoon hull with an integrated rocker & shape along with contoured wake plates to enable desirable water flow
- In-floor ski storage
- Aluminum waveshield
- 3" rub rail with black vinyl insert
- Deck corner impact protection - polished aluminum
- Tapered front deck
- Extended rear deck
- Pontoon double full risers
- (4) stainless steel pull-up cleats
- 200 gallon center tube ballast tank

2385

WT



WAKETOON	Length Class	Boat Length Overall	Width	Dry Weight	Max Weight Capacity	Max Persons Pounds	Max Number Persons	Max Engine HP
2385 X 3 WT	23	23' 9"	8.5'	4200	2500	1470	10	350



EXCALIBUR



*2785 ELW (Boat shown with many aftermarket accessories)
Boats shown may show optional equipment.*



2585 ELW



2585 ELW (Excalibur LTD Model), 2785 QL



EXCALIBUR

Excalibur



2785 ELW
Boats shown may show optional equipment.



STANDARD FEATURES & SPECIFICATIONS

HELMSTAND/ELECTRONICS

- Dual Commander fiberglass helmstands with full windshield, upholstered automotive-stitched trim, & touch-screen dash panel with detailed information center, USB charging ports & light controls
- (2) 12-Volt power points
- Garmin 743XSV GPS
- Premium sound package: Fusion RA-770 radio, (8) Fusion SG RGB-lighted speakers & grills, Fusion 8-channel amp, Fusion D mono block digital amp, 10" Fusion Subwoofer, USB audio input & charge
- Steering - SeaStar hydraulic tilt
- Michigan steering wheel
- Courtesy light on helmstand

INTERIOR

- Admiral reclining high back chair with color-matched accents
- Chair adjustment slider, front, back, rotate
- Interior composite wall panels
- Full Teak vinyl flooring
- RGB lighted cup holders & mood lighting
- Large rectangle greywood heavy duty thermoform table with large cup holders, recessed tray & phone storage
- USB charging port
- Trash can built into lounge arm
- Lifetime aluminum seat frames with flow-through ventilation
- Seat frame floor matting
- Ultrafine touch seat vinyl
- Deluxe seat frame cladding with SST vents
- (2) moveable cupholders
- Suspension seating
- Battery dual smart switch system

EXTERIOR

- GX solid welded aluminum painted walls with fore & aft fiberglass accents
- GX tower with bimini top
- USCG navigation lights
- RGB exterior EGT docklights
- RGB rubrail lights
- RGB rear underwater lights
- Hi-flex bold black logos
- Heavy duty gates with logo panel
- Premium stainless telescoping ladder
- Quick-release fender holders with straps
- Full color-matched mooring cover
- Ski tow bar

HULL

- Waveglider triple 27" pontoons w/high performance lifting fins & aluminum waveshield
- Side keels
- 3" black rub rail with black vinyl insert
- Deck corner impact protection - black
- Tapered front deck
- Extended rear deck
- Pontoon double full risers
- (4) stainless steel pull-up cleats
- Bolted deck

FUEL

- 58 gallon remote fill center tube tank
- SST gas cap & vent

2585

2785

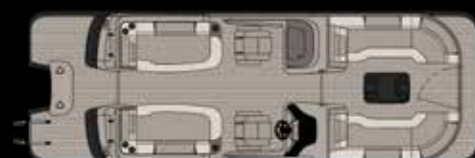
ELW



ELW-PC



QLW



EXCALIBUR	Length Class	Boat Length Overall	Deck Length	Pontoon Diameter	Width	Dry Weight	Max Weight Capacity	Max Persons Pounds	Max Number Persons	Max Engine HP
2585 X 3 27" WG	25	26' 6"	25' 3"	27" X 3	8.5'	4600	2900	1950	14	400
2785 X 27" WG	27	28' 6"	27' 3"	27" X 3	8.5'	5000	3160	2345	16	450
TWIN ENGINE CAPACITIES DRY WEIGHT						Max Weight Capacity	Max Persons Pounds	Max Number Persons	Max Engine HP	
2585 x 3 27" WG Twin						2965	1130	9	800	
2785 x 3 27" WG Twin						3615	1580	10	900	



EXCALIBUR LTD



2585 QLW
Boats shown may show optional equipment.



2585 ELW



2585 QLW



EXCALIBUR LTD



2585 ELW



Boats shown may show optional equipment.



STANDARD FEATURES & SPECIFICATIONS

HELMSTAND/ELECTRONICS

- Dual Commander fiberglass helmstands with full windshield, upholstered automotive-stitched trim, & touch-screen dash panel with detailed information center, USB charging ports & light controls
- (2) 12-Volt power points
- Garmin 743XSV GPS
- Premium sound package: Fusion RA-770 radio, (8) Fusion SG RGB-lighted speakers & grills, Fusion 8-channel amp, Fusion D mono block digital amp, 10" Fusion Subwoofer, USB audio input & charge
- Steering - SeaStar hydraulic tilt
- Michigan steering wheel
- Courtesy light on helmstand

INTERIOR

- Admiral reclining high back chair with color-matched accents
- Chair adjustment slider, front, back, rotate
- Interior composite wall panels
- Full Teak vinyl flooring
- RGB lighted cup holders & mood lighting
- Large rectangle greywood heavy duty thermoform table with large cup holders, recessed tray & phone storage
- USB charging port
- Trash can built into lounge arm
- Lifetime aluminum seat frames with flow-through ventilation
- Seat frame floor matting
- Ultrafine touch seat vinyl
- Deluxe seat frame cladding with SST vents
- (2) moveable cupholders
- Suspension seating
- Battery dual smart switch system

EXTERIOR

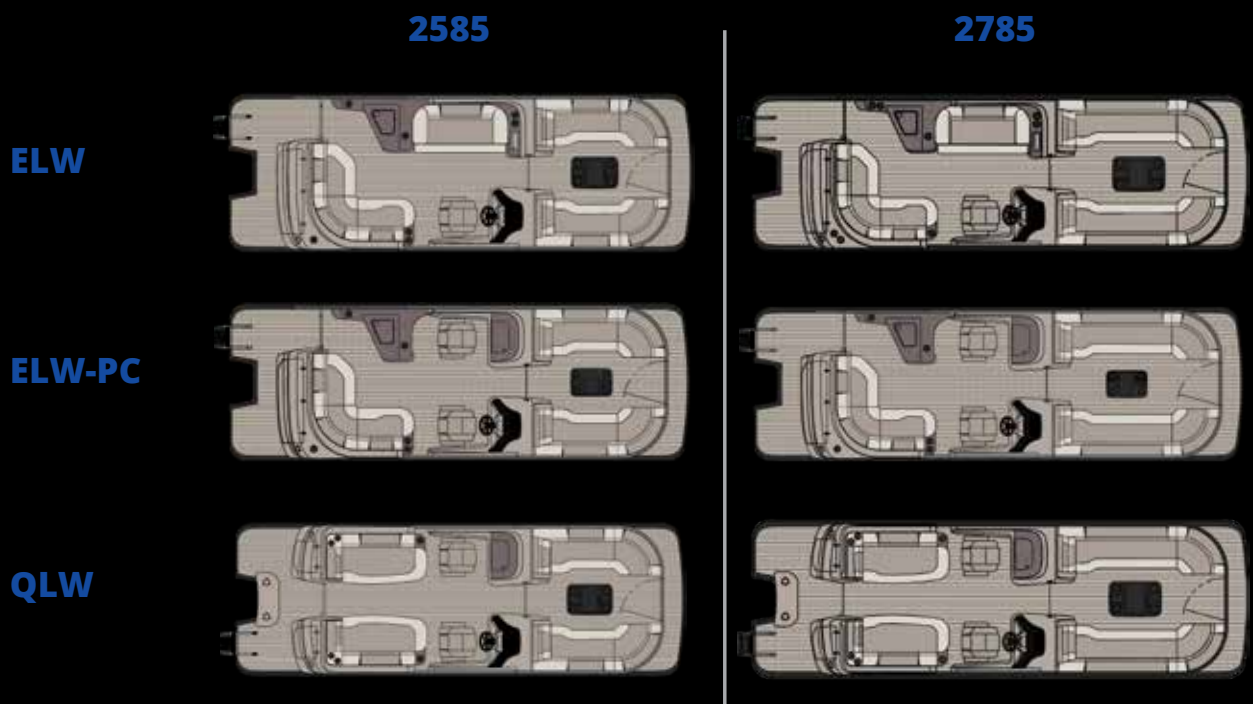
- Deco 2 external smooth retro walls
- GX tower with bimini top
- USCG navigation lights
- RGB exterior deco docklights
- RGB rubrail lights
- RGB rear underwater lights
- Hi-flex bold black logos
- Premium stainless telescoping ladder
- Quick-release fender holders with straps
- Full color-matched mooring cover
- Ski tow bar

HULL

- Waveglider triple 27" pontoons w/high performance lifting fins & aluminum waveshield
- Side keels
- 3" black rub rail with black vinyl insert
- Deck corner impact protection - black
- Tapered front deck
- Extended rear deck
- Pontoon double full risers
- (4) stainless steel pull-up cleats
- Bolted deck

FUEL

- 58 gallon remote fill center tube tank
- SST gas cap & vent



EXCALIBUR LTD	Length Class	Boat Length Overall	Deck Length	Pontoon Diameter	Width	Dry Weight	Max Weight Capacity	Max Persons Pounds	Max Number Persons	Max Engine HP
2585 X 3 27" WG	25	26' 6"	25' 3"	27" X 3	8.5'	4600	2900	1950	14	400
2785 X 27" WG	27	28' 6"	27' 3"	27" X 3	8.5'	5000	3160	2345	16	450
TWIN ENGINE CAPACITIES DRY WEIGHT						Max Weight Capacity	Max Persons Pounds	Max Number Persons	Max Engine HP	
2585 x 3 27" WG Twin						2965	1130	9	800	
2785 x 3 27" WG Twin						3615	1580	10	900	



CATALINA



2585 VRBW
Boats shown may show optional equipment.



2585 VRL (Shown with optional EX Tower)



THE ART OF THE PONTOON | WWW.AVALONPONTOONS.COM

CATALINA



2585 VRB



2385 VRB (Shown with optional SST railing)
Boats shown may show optional equipment.



2585 VRB (Shown with optional SST Railing & EX Tower)



CATALINA



2585 ELW (Shown with optional Deco Sport Arch)
Boats shown may show optional equipment.



2385 CRU (Shown with optional Deco Sport Arch)



2585 CRUFS

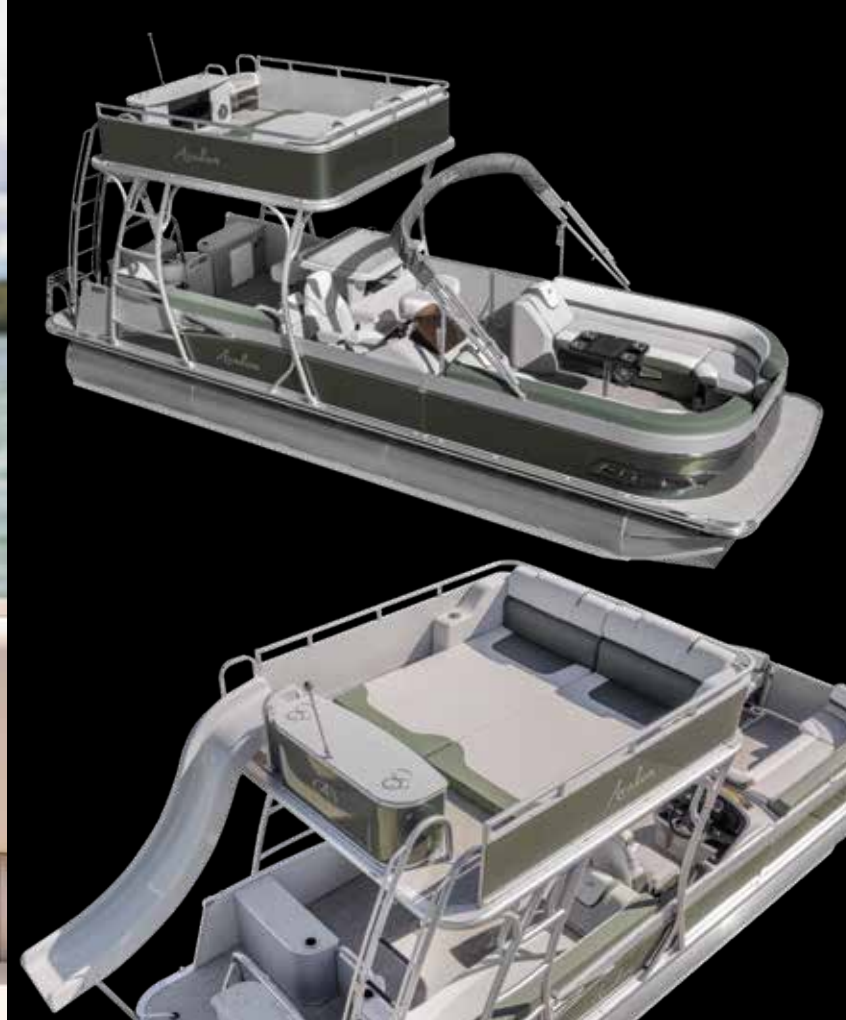


CATALINA



2785 ENT (Shown with optional booth seating)
Boats shown may show optional equipment.





Catalina



2785 ENTFT Shown with optional Deco Uprights & upper deck furniture



THE ART OF THE PONTOON | WWW.AVALONPONTOONS.COM

CATALINA



2585 RL (Shown with optional Deco Tower)



2385 RJ
Boats shown may show optional equipment.





2585 QL (Shown with optional Blackout Package)



2585 QLW (Shown with optional EX Tower)



CATALINA



2585 QF (Shown with optional fish chair upgrade)



2385 RF (Shown with optional fish chair upgrade)



Boats shown may show optional equipment.



CATALINA

HELMSTAND/ELECTRONICS

- Ensign II fiberglass helmstand with soft touch designer dash panel with USB charging ports (except ELW/QLW/VRBW)
- Dual Commander fiberglass helmstands with full windshield, upholstered automotive-stitched trim, & touch-screen dash panel with detailed information center, USB charging ports & light controls (ELW/QLW/VRBW)
- Tach, Volt, Fuel Gauges
- GPS speedometer
- 12-Volt power point
- Gold sound package: Fusion RA-670 radio, (4) Fusion XS speakers & grills
- Gold Plus sound package (ELW/QLW/VRB/VRBW/VRL): Fusion RA-670 radio, (6) Fusion XS speakers & grills, Fusion 6-channel amp, USB audio input & charge
- Steering - mechanical tilt (except CRFS & ENTFS)
- Steering - BayStar hydraulic tilt (CRFS & ENTFS only)
- Steering - SeaStar hydraulic tilt (ELW/QLW/VRBW Only)
- Huron steering wheel
- Removeable windshield
- Courtesy light on helmstand

INTERIOR

- Commander's mid back reclining driver's chair with & color-matched accents
- Chair adjustment slider, front, back, rotate
- Interior composite wall panels (except QF/RF)
- Full Riptide vinyl flooring
- Stainless steel cup holders
- Greywood heavy duty thermoform table with large cup holders, recessed tray & phone storage (large kidney or rectangle)
- USB charging port
- Lifetime aluminum seat frames with flow-through ventilation
- Sonora seat vinyl
- Deluxe seat frame cladding
- 2 moveable cupholders
- Suspension seating
- Lounge arms with storage (based on floorplans)
- Privacy station curtain & frame (N/A on QLW, VRBW & Optional on QF/RF)
- Vinyl non-skid strips for entry gates

EXTERIOR

- Deco 3 external smooth retro monochromatic walls
- Bimini top with 1¼" square anodized aluminum frame, SST quick release bimini mounts & transport brackets (except CRFS & ENTFS)
- USCG navigation lights
- Exterior nav/docklight combo
- Hi-flex chrome logos
- Gates with lift-n-lay hinges & SST EZ lift latch
- Premium stainless telescoping ladder

HULL

- (2) 25" diameter pontoons
- (2) 27" diameter pontoons with lifting fins (CRFS & ENTFS only)
- Waveglider triple 25 pontoons with high performance lifting fins & aluminum waveshield (ELW/QLW/VRBW only)
- 3" rub rail with black vinyl insert
- Deck corner impact protection - polished aluminum
- Tapered front deck
- Extended rear deck
- Pontoon double full risers
- (4) stainless U-bolt & cleat combo
- 25" transom (CRFS & ENTFS only)

FUEL

- 25 gallon remote fill transom tank (except CR/CRFS/ELW/QLW/VRBW)
- 32 gallon remote fill tank under sundeck with SST gas cap & vent (CR & CRFS only)
- 58 Gallon Remote Fill Center Tube Tank (ELW QLW/VRBW only)

FISHING

- Garmin Striker 5CV color fishfinder/depth finder (QF/RF)
- Garmin 73CV GPS (ELW/QLW/VRBW only)
- Livewell in front of helmstand (QF only)
- Rear fishing center with 2 fishing chairs, rod holders & livewell (QF/RF)
- Tackle trays with rear sink & access door (QF/RF)

CATALINA	Length Class	Boat Length Overall	Deck Length	Pontoon Diameter	Width	Dry Weight	Max Weight Capacity	Max Persons Pounds	Max Number Persons	Max Engine HP
2385 25"	23	23' 5"	23' 3"	25"	8.5'	2150	2150	1540	11	140
2385 X 3 25" SP	23	24' 6"	23' 3"	25" X 3	8.5'	2800	2582	1768	12	200
2385 X 3 25" WG	23	24' 6"	23' 3"	25" X 3	8.5'	2900	2560	1600	12	250
2385 X 3 27" WG	23	24' 6"	23' 3"	27" X 3	8.5'	3050	2980	1890	13	300
2585 25"	25	25' 5"	25' 3"	25"	8.5'	2450	2430	1770	13	140
2585 X 3 25" SP	25	26' 6"	25' 3"	25" X 3	8.5'	3000	2877	2063	14	200
2585 X 3 25" WG	25	26' 6"	25' 3"	25" X 3	8.5'	3100	2825	2015	14	300
2585 X 3 27" WG	25	26' 6"	25' 3"	27" X 3	8.5'	3200	3270	2460	17	400
2785 25"	27	27' 5"	27' 3"	25"	8.5'	2650	2675	2015	14	150
2785 X 25" SP	27	28' 6"	27' 3"	25" X 3	8.5'	3125	3200	2390	17	200
2785 X 25" WG	27	28' 6"	27' 3"	25" X 3	8.5'	3300	3120	2310	16	300
2785 X 27" WG	27	28' 6"	27' 3"	27" X 3	8.5'	3400	3575	2760	19	450
CATALINA FUNSHIP										
2585 27"	25	25' 5"	25' 3"	27"	8.5'	3300	2590	1830	12	150
2585 X 3 27" WG	25	25' 5"	25' 3"	27" X 3	8.5'	4200	3070	2000	14	250
2785 X 3 27" WG	27	28' 6"	27' 3"	27" X 3	8.5'	4485	3320	2370	17	250
TWIN ENGINE CAPACITIES DRY WEIGHT						Max Weight Capacity	Max Persons Pounds	Max Number Persons	Max Engine HP	
2585 x 3 27" WG Twin (RL, VRB, VRL)						2965	1130	9	600	
2785 x 3 27" WG Twin (RL, VRB, VRL)						3615	1580	10	700	
2585 x 3 27" WG Twin						2965	1130	9	800	
2785 x 3 27" WG Twin						3615	1580	10	900	



2385 VRL
Boats shown may show optional equipment.



2385 VRBW



2385 VRB



THE ART OF THE PONTOON | WWW.AVALONPONTOONS.COM

LSZ



2185 CRB (Shown with optional Deco Sport Arch)
Boats shown may show optional equipment.



LSZ



2185 CR II



Boats shown may show optional



LSZ



2585 QL (Shown with optional full enclosure)
Boats shown may show optional equipment.



2585 QL (Shown with optional double bimini)



LSZ



2385 RF
(Shown with optional fish chair upgrade)
Boats shown may show optional equipment.



LSZ



2185 EL (Shown with optional Smart 80 touch screen)



Boats shown may show optional equipment.



HELMSTAND/ELECTRONICS

- Crew roto helmstand with large dash & side storage
- Dual Cadet roto helmstands with full windshield & greywood dash panels (ELW/VRBW only)
- Tach, Volt, Fuel Gauges
- GPS Speedometer
- 12-Volt power point
- Silver sound package: Fusion RA-210 radio, (4) Fusion EL speakers & grills
- Silver Plus sound package (VRB/VRBW/VRL): Fusion RA-210 radio, (6) Fusion EL speakers & grills, Fusion 4-channel amp, USB audio input & charge
- Steering – mechanical tilt
- Steering – SeaStar hydraulic tilt (ELW/VRBW only)
- Ontario steering wheel
- Removeable windshield (except ELW/VRBW)
- Courtesy light on helmstand

INTERIOR

- Sport low back driver's chair with arms
- Chair adjustment slider, front, back, rotate
- Full Riptide vinyl flooring
- Stainless steel cup holders
- Greywood heavy duty thermoform table with large cup holders, recessed tray & phone storage (large kidney or rectangle)
- 20-quart insulated cooler (ELW only)
- USB charging port
- Lifetime aluminum seat frames with flow-through ventilation
- Sonora seat vinyl
- Deluxe seat frame cladding
- Suspension seating
- Lounge arms with storage (based on floorplans)
- Vinyl non-skid strips for entry gates

EXTERIOR

- Deco 4 external multi panel smooth walls
- Bimini top with 1¼" square anodized aluminum frame, SST quick release bimini mounts & transport brackets
- USCG navigation lights
- Mirrored chrome logos
- Gates with lift-n-lay hinges
- Stainless steel telescoping ladder

HULL

- (2) 25" diameter pontoons
- Sport performance pkg 25" MAX 200HP (ELW/VRBW only)
- 3" rub rail with black vinyl insert
- Deck corner impact protection – aluminum
- Tapered front deck
- Extended rear deck
- Pontoon double full risers
- (4) stainless U-bolt & cleat combo

FUEL

- 25 gallon direct fill transom tank
- 38 gallon direct fill tank in center pontoon (ELW/VRBW)

REAR FISH

- Rear fishing center with 2 fishing chairs, rod holders & livewell



1985 CR

LSZ	Length Class	Boat Length Overall	Deck Length	Pontoon Diameter	Width	Dry Weight	Max Weight Capacity	Max Persons Pounds	Max Number Persons	Max Engine HP
1985 25"	19	19' 5"	19' 3"	25"	8.5'	1650	1835	1475	10	90
1985 X 3 25" SP	19	20' 6"	19' 3"	25" X 3	8.5'	1950	2100	1440	10	115
1985 X 3 25" WG	19	20' 6"	19' 3"	25" X 3	8.5'	1950	2100	1440	10	115
2185 25"	21	21' 5"	21' 3"	25"	8.5'	1800	2035	1380	10	115
2185 X 3 25" SP	21	22' 6"	21' 3"	25" X 3	8.5'	2200	2370	1710	12	175
2185 X 3 25" WG	21	22' 6"	21' 3"	25" X 3	8.5'	2200	2370	1710	12	175
2185 X 3 27" WG	21	22' 6"	21' 3"	27" X 3	8.5'	2400	2700	2020	14	175
2385 25"	23	23' 5"	23' 3"	25"	8.5'	2050	2260	1600	11	140
2385 X 3 25" SP	23	24' 6"	23' 3"	25" X 3	8.5'	2800	2582	1768	12	200
2385 X 3 25" WG	23	24' 6"	23' 3"	25" X 3	8.5'	2800	2580	1780	12	250
2385 X 3 27" WG	23	24' 6"	23' 3"	27" X 3	8.5'	2950	2915	2255	13	300
2585 25"	25	25' 5"	25' 3"	25"	8.5'	2250	2550	2020	14	140
2585 X 3 25" SP	25	26' 6"	25' 3"	25" X 3	8.5'	3000	2877	2063	14	200
2585 X 3 25" WG	25	26' 6"	25' 3"	25" X 3	8.5'	3000	2875	2060	14	300
2585 X 3 27" WG	25	26' 6"	25' 3"	27" X 3	8.5'	3100	3305	2495	17	400

Boats shown may show optional equipment.



STANDARD FEATURES & SPECIFICATIONS

1985

2185

2385

2585

CR11



CRB



CR



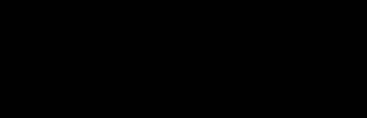
QL



ENT



RF



ELW



EL



VRB



VRL



VRBW



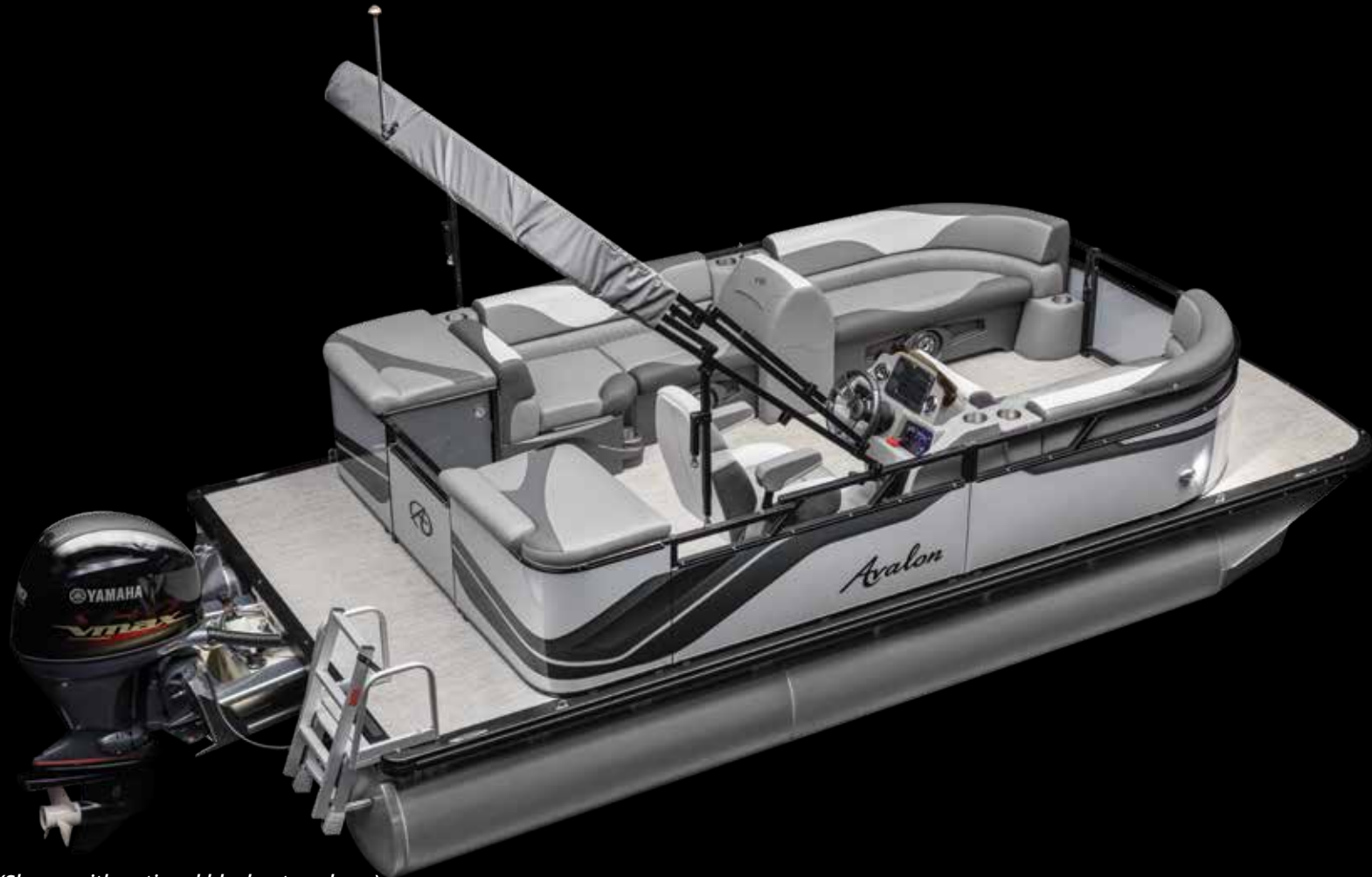
RL



VENTURE 85



2385 ELW
Boats shown may show optional equipment.



2185 CR11 (Shown with optional blackout package)



VENTURE 85



2185 RF



Boats shown may show optional equipment.



2585 CCF



2385 QF



2385 ELW



VENTURE 85

HELMSTAND/ELECTRONICS

- Cadet II Roto Helmstand (except ELW)
- Dual Cadet Roto helmstands with twin windscreens (ELW)
- Tach, Volt, Fuel Gauges
- 12-Volt power point
- Bronze sound package: Fusion RA-60 radio, (4) Fusion EL speakers & grills
- Mechanical steering (no tilt) (except CCF)
- SeaStar hydraulic tilt steering (CCF only)
- Erie steering wheel
- Removeable windshield (except ELW)
- Courtesy light on helmstand

INTERIOR

- Sport low back driver's chair
- Chair adjustment slider, front, back, rotate
- Full Riptide vinyl flooring
- Stainless steel cup holders
- Greywood small kidney thermoform table
- USB charging port
- Lifetime aluminum seat frames with flow-through ventilation
- Sonora seat vinyl
- Color-matched seat frame cladding
- Suspension seating
- Lounge arms with storage (based on floorplans)
- Vinyl non-skid strips for entry gates

EXTERIOR

- .040 Heritage external smooth wall panels
- Bimini top with 1 1/4" square anodized aluminum frame, SST quick release bimini mounts & transport brackets
- USCG navigation lights
- Flat graphic logos
- Gates with lift-n-lay hinges
- Stainless steel telescoping ladder (CCF/QF/RF only)
- Aluminum ladder (except QF/RF/CCF)

HULL

- (2) 25" diameter pontoons
- Sport performance package (CCF only)
- 3" rub rail with black vinyl insert
- Deck corner impact protection - aluminum
- Tapered front deck
- Extended rear deck (CCF/QF/RF only)
- Pontoon double full risers
- (4) stainless U-bolt & cleat combo

FUEL

- 25 gallon direct fill transom tank
- 38 gallon direct fill tank in center pontoon (CCF only)

FISHING

- Garmin Striker 5CV color fishfinder/depth finder (CCF only)
- Rear fishing center with rod holders & livewell (CCF/QF/RF only)
- Rod box (CCF only)
- Tackle trays with rear sink & access door (CCF only)

VENTURE 85	Length Class	Boat Length Overall	Deck Length	Pontoon Diameter	Width	Dry Weight	Max Weight Capacity	Max Persons Pounds	Max Number Persons	Max Engine HP
1985 25"	19	19' 5"	19' 3"	25"	8.5'	1650	1835	1475	10	90
1985 X 3 25" SP	19	20' 6"	19' 3"	25" X 3	8.5'	1950	2116	1493	10	115
1985 X 3 25" WG	19	20' 6"	19' 3"	25" X 3	8.5'	1950	2100	1440	10	115
2185 25"	21	21' 5"	21' 3"	25"	8.5'	1800	2035	1380	10	115
2185 X 3 25" SP	21	22' 6"	21' 3"	25" X 3	8.5'	2200	2370	1710	12	175
2185 X 3 25" WG	21	22' 6"	21' 3"	25" X 3	8.5'	2200	2370	1710	12	175
2385 25"	23	23' 5"	23' 3"	25"	8.5'	2050	2260	1600	11	140
2385 X 3 25" SP	23	24' 6"	23' 3"	25" X 3	8.5'	2800	2582	1768	12	200
2385 X 3 25" WG	23	24' 6"	23' 3"	25" X 3	8.5'	2800	2580	1780	12	250
2385 X 3 27" WG	23	24' 6"	23' 3"	27" X 3	8.5'	2950	2915	2255	13	300
2585 25"	25	25' 5"	25' 3"	25"	8.5'	2250	2550	2020	14	140
2585 X 3 25" SP	25	26' 6"	25' 3"	25" X 3	8.5'	3000	2877	2063	14	200
2585 X 3 25" WG	25	26' 6"	25' 3"	25" X 3	8.5'	3000	2875	2060	14	300
2585 X 3 27" WG	25	26' 6"	25' 3"	27" X 3	8.5'	3100	3305	2495	17	400



Boats shown may show optional equipment.



STANDARD FEATURES & SPECIFICATIONS

1985

2185

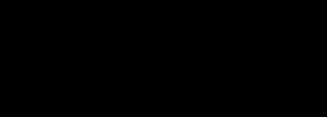
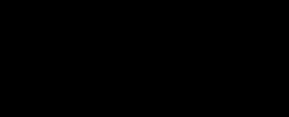
2385

2585

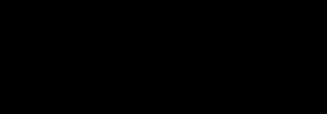
CR



CR II



QF



RF



CCF



ELW



QL



VENTURE



2380 QL
Boats shown may show optional equipment.



2380 QL



1980 CRB
THE ART OF THE PONTOON | WWW.AVALONPONTOONS.COM

VENTURE



1775 CRU
Boats shown may show optional equipment.



2180 CRBF



1775 CRU



VENTURE



1975 RF

Boats shown may show optional equipment.



VENTURE

HELMSTAND/ELECTRONICS

- Cadet II Roto Helmstand
- Tach, Volt, Fuel Gauges
- 12-Volt power point
- Bronze sound package: Fusion RA-60 radio, (4) Fusion EL speakers & grills
- Mechanical steering (no tilt)
- Erie steering wheel
- Removeable windshield
- Courtesy light on helmstand

INTERIOR

- Sport low back driver's chair
- Chair adjustment slider, front, back, rotate
- Full Riptide vinyl flooring
- Stainless steel cup holders
- Greywood small kidney thermoform table
- USB charging port
- Lifetime aluminum seat frames with flow-through ventilation
- Sonora seat vinyl
- Color-matched seat frame cladding
- Suspension seating
- Lounge arms with storage (based on floorplans)
- Vinyl non-skid strips for entry gates

EXTERIOR

- .040 Heritage external smooth wall panels
- Bimini top with 1¼" square anodized aluminum frame, SST quick release bimini mounts & transport brackets
- USCG navigation lights
- Flat graphic logos
- Gates with lift-n-lay hinges
- Aluminum ladder

HULL

- (2) 23" diameter pontoons
- 3" rub rail with black vinyl insert
- Deck corner impact protection - aluminum
- Tapered front deck
- Pontoon double full risers
- (4) stainless U-bolt & cleat combo

FUEL

- 15 gallon direct fill transom tank (15', 17' & 19')
- 25 gallon direct fill transom tank (21' & 23')

FISHING

- Livewell in bench (BF & CRBF only)
- Rear fishing center with rod holders & livewell (FNC, QF & RF only)

VENTURE	Length Class	Boat Length Overall	Deck Length	Pontoon Diameter	Width	Dry Weight	Max Weight Capacity	Max Persons Pounds	Max Number Persons	Max Engine HP
1575	15	15' 5"	14'	23"	7.5'	1150	11700	800	5	40
1575 X 3 25" SP	15	16' 6"	14'	25" X 3	7.5'	1250	1600	1040	7	60
1775	17	17' 6"	16'	23"	7.5'	1350	1350	950	6	50
1775 X 3 25" SP	17	18' 6"	16'	25" X 3	7.5'	1700	1860	1300	9	90
1975	19	19' 5"	18'	23"	7.5'	1600	1575	1050	7	75
1975 X 3 25" SP	19	20' 6"	18'	25" X 3	7.5'	1950	2116	1493	10	115
2180	21	21' 5"	20'	23"	8'	1750	1805	1250	9	90
2180 X 3 25" SP	21	22' 6"	20'	25" X 3	8'	2200	2370	1710	12	175
2380	22	23' 5"	22'	23"	8'	2000	2000	1450	10	100
2380 X 3 25" SP	23	24' 6"	22'	25" X 3	8'	2800	2582	1768	12	200
2380 X 3 25" WG	23	24' 6"	22'	25" X 3	8'	2800	2580	1780	12	250



Boats shown may show optional equipment.



STANDARD FEATURES & SPECIFICATIONS

	1575	1775	1975	2180	2380
CR					
BF					
CR BF					
CRB					
FNC					
RF					
QF					
QL					



VLS / VTX



2180 QL
Boats shown may show optional equipment.



1980 QF



THE ART OF THE PONTOON | WWW.AVALONPONTOONS.COM

VLS / VTX

HELMSTAND/ELECTRONICS

- Cadet II Roto Helmstand
- Tach, Volt, Fuel Gauges
- 12-Volt power point
- Bronze sound package: Fusion RA-60 radio, (4) Fusion EL speakers & grills
- Mechanical Tilt Steering
- Black soft-grip steering wheel
- Removeable windshield
- Courtesy light on helmstand

INTERIOR

- Sport low back driver's chair
- Chair adjustment slider, front, back, rotate
- Full Riptide vinyl flooring
- Stainless steel cup holders
- Greywood small kidney thermoform table
- USB charging port
- Lifetime aluminum seat frames with flow-through ventilation
- Sonora seat vinyl (choose buckskin, cognac, graphite, silver or white)
- Color-matched seat frame cladding
- Suspension seating
- Lounge arms with storage (based on floorplans)
- Vinyl non-skid strips for entry gates
- Small built-in trash can (where possible)

EXTERIOR

- .040 Heritage external smooth wall panels
- Bimini top with 1¼" square anodized aluminum frame, SST quick release bimini mounts & transport brackets
- USCG navigation lights
- Flat graphic logos
- Gates with lift-n-lay hinges
- Aluminum ladder
- Playpen cover

HULL

- (2) 25" diameter pontoons
- 3" rub rail with black vinyl insert
- Deck corner impact protection - aluminum
- Tapered front deck
- Pontoon double full risers
- (4) stainless U-bolt & cleat combo

FUEL

- 25 gallon direct fill transom tank

QUAD FISH

- Rear fishing center with rod holders & livewell
- (4) fishing chairs



Boats shown may show optional equipment.



STANDARD FEATURES & SPECIFICATIONS



VLS	Length Class	Boat Length Overall	Deck Length	Pontoon Diameter	Width	Dry Weight	Max Weight Capacity	Max Persons Pounds	Max Number Persons	Max Engine HP
1980 25"	19	19' 5"	18'	25"	8'	1650	1835	1475	10	90
2180 25"	21	21' 5"	20'	25"	8'	1800	2035	1380	10	115
2380 25"	23	23' 5"	22'	25"	8'	2050	2260	1600	11	140



VTX	Length Class	Boat Length Overall	Deck Length	Pontoon Diameter	Width	Dry Weight	Max Weight Capacity	Max Persons Pounds	Max Number Persons	Max Engine HP
1780 25"	17	17' 5"	16'	25"	8'	1425	1580	1050	7	60
1980 25"	19	19' 5"	18'	25"	8'	1650	1835	1475	10	90





GALLERY OF FEATURES & OPTIONS

			WAKETOON	EXCALIBUR	EXCALIBUR LTD	CATALINA	LSZ	VENTURE 85	VENTURE	VLS	VTX
HELMSTANDS	Commander - Analog	H1	•	•	•	W	•	•	•	•	•
	Commander - Smart80	H2	•	•	•	O	•	•	•	•	•
	Commander - Medallion Touchscreen	H3	S	S	S	O	•	•	•	•	•
	Ensign 2	H4	•	•	•	S	•	•	•	•	•
	Ensign 2 - Smart 80 Touchscreen	H5	•	•	•	O	•	•	•	•	•
	Crew - Fiberglass	H6	•	•	•	•	O	•	•	•	•
	Crew - Roto	H7	•	•	•	•	S	•	•	•	•
	Crew - Smart 80 Touchscreen	H8	•	•	•	•	O	•	•	•	•
	Cadet - Windshield	H9	•	•	•	•	W	W	•	•	•
	Cadet - Fiberglass	H10	•	•	•	•	•	O	O	•	•
	Cadet 2 - Roto	H11	•	•	•	•	•	S	S	S	S
	Center Console	H12	•	•	•	•	•	CF	•	•	•
STEERING	Superior Steering Wheel	S1	S	O	O	O	O	O	O	•	•
	Michigan Steering Wheel	S2	•	S	S	O	O	O	O	•	•
	Huron Steering Wheel	S3	•	•	•	S	O	O	O	•	•
	Ontario Steering Wheel	S4	•	•	•	O	S	O	O	•	•
	Erie Steering Wheel	S5	•	•	•	•	•	S	S	O	O
	Black Soft Grip Wheel	S6	•	•	•	•	•	•	•	S	S
	Seastar Hydraulic	S8	S	S	S	O, W	O, W	O, CF	O	•	•
	Baystar Hydraulic	S9	•	•	•	FS	O	O	O	O	O
CHAIRS	Admiral Recliner with Flip Up Bolster	C1	•	O	O	O	O	O	O	•	•
	Admiral Recliner	C2	•	S	S	O	O	O	O	•	•
	Sport High Back with Flip Up Bolster	C3	S	•	•	O	O	O	O	•	•
	Sport High Back with Arms	C4	•	•	•	O	O	O	O	•	•
	Commander Mid Back Recliner	C5	•	•	•	S	O	O	O	O	O
	Sport Low Back with Arms	C6	•	•	•	•	S	O	O	•	•
	Sport Low back	C7	•	•	•	•	•	S	S	S	S
	Fishing	C9	•	•	•	F	F	F	F	•	F
TABLES	Large Heavy Duty Curved Greywood Table	F24	•	O	O	SF	SF	O	O	•	•
	Large Heavy Duty Rectangle Greywood Table	F25	•	S	S	SF	SF	O	O	•	•
	Small Greywood Curved Table	F26	•	•	•	•	•	S	S	S	S
FURNISHINGS	6000 Series Ultrafine	F2.1	•	S	S	•	•	•	•	•	•
	5000 Series Ultrafine	F3	•	•	•	O	•	•	•	•	•
	4000 Series	F5	S	•	•	S	O	•	•	•	•
	2000 Series	F7	•	•	•	•	S	O	O	•	•
	1500 Series	F7.1	•	•	•	•	•	S	S	•	•
	1000 Series	F7.2	•	•	•	•	•	•	•	S	S

S = Standard

F = Standard on Fish Models Only

O = Option

SF = Standard Depending on Floorplan

• = Not Available

FS = Standard on Funship Models

W = Standard on Windshield Model

CF = Center Console Fish Only

Boats shown may show optional equipment.



H1



H2



H3



H4



H5



H6



H7



H8



H9



H10



H11



H12



S1



S2



S3



S4



S5



S6



C1



C2



C3



C4



C5



C6



C7



C9



F24



F25



F26



F2.1



F3



F5



F7



F7.1



F7.2





GALLERY OF FEATURES & OPTIONS

			WAKETOON	EXCALIBUR	EXCALIBUR LTD	CATALINA	LSZ	VENTURE 85	VENTURE	VLS	VTX
LIGHTING	RGB Interior & Exterior Light Package	L1	S	S	S	O	O	O	O	•	•
	RGB Interior Light Package	L2	•	•	•	O	O	O	O	•	•
	Blue Ice Interior Light Package	L3	•	•	•	O	O	O	O	•	•
	Blue Interior Mood Lights	L5	•	•	•	O	O	O	O	O	O
	Blue Under Rubrail Lights	L6	•	•	•	O	O	O	O	•	•
	Rear Underwater Lights	L7	•	S	S	O	O	O	O	•	•
	Lighted Chrome Air Vents	L8	•	•	•	O	•	•	•	•	•
	Lighted Blackout Air Vents	L9	•	•	•	O	•	•	•	•	•
	Blue lighted cup holders - entire boat	L10	•	S	S	O	O	O	O	•	•
	EGT Docklights	L10.9	•	S	S	•	•	•	•	•	•
	Deco Built In Docklights	L11	S	•	•	O	•	•	•	•	•
	LED Accent Built In Chrome Docklights	L12	•	•	•	O	O	O	•	•	•
	LED Accent Built In Blackout Docklights	L13	•	•	•	O	O	O	•	•	•
	Chrome 90° Built In Docklights	L14	•	•	•	•	•	•	O	•	O
	Black 90° Built In Docklights	L15	•	•	•	•	•	•	O	•	•
	Chrome Wall Mount Nav/Dock Light	L16	•	•	•	S	O	O	•	O	•
TOPS	Bimini Top - Electric (Rear Only)	B8	•	•	•	OXF	O	O	•	•	•
	Bimini Top - Blackout 1-1/4" Square Anodized Frame	B9	•	•	•	OXF	O	O	O	•	•
	Bimini Top - 1-1/4" Square Anodized Frame	B9.1	•	•	•	SXF	S	S	S	S	S
	Bow Mount Bimini Top (Matches Rear Frame)	B10	•	•	•	O	O	O*	O*	•	•
	Bimini Top for Funship Roof	B13	•	•	•	OFS	•	•	•	•	•
	Deco Uprights for Funship Roof	B14	•	•	•	OFS	•	•	•	•	•
ENTERTAINMENT	Booth Bar w/Flip Back Seats, Cooler, Phone Chargers, & Trash Can	F22	•	•	•	O	•	•	•	•	•
	Bar with Stools, Cooler, Phone Chargers, Trash Can	F22.1	•	•	•	SE	•	•	•	•	•
	Oversize Stationary Table	F22.2	•	•	•	•	SE	•	•	•	•
	Port Rear Fiberglass Prep Center w/Refrigerator & Sink	F22.3	•	ELW	ELW	ELW	•	•	•	•	•
	Port Rear Prep Center w/Built In Cooler & Sink	F22.4	•	•	•	•	ELW	•	•	•	•
	Wash Down Kit	F23	•	O	O	O	O	O	O	•	•
FINISH OPTIONS	VRB Rear Railing & Chain Across Entry	W4	•	•	•	O	O	•	•	•	•
	Composite Interior Wall Covers	W7	S	S	S	SEF	•	•	•	•	•
	Blackout Package Walls, Rubrail, Corners, & Top Frame	P8	O	S	S	O	O	O	O	•	•

S = Standard
O = Option
SXF = Standard Except Funship

• = Not Available
SEF = Standard Except on Fish

OXF = Option Except Funship
SE = Standard on Entertainer

ELW = Elite Windshield
O* = Option Depending on Floorplan

Boats shown may show optional equipment.



L1



L2



L3



L5



L6



L7



L8



L9



L10



L10.9



L11



L12



L13



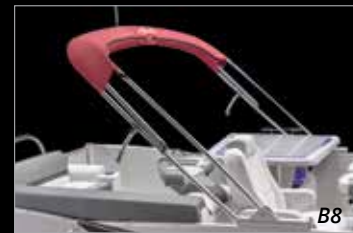
L14



L15



L16



B8



B9



B9.1



B10



B13



B14



F22



F22.1



F22.2



F22.3



F22.4



F23



W4



W7



P8



GALLERY OF FEATURES & OPTIONS

		WAKETOON	EXCALIBUR	EXCALIBUR LTD	CATALINA	LSZ	VENTURE 85	VENTURE	VLS	VTX	
FURNISHING FEATURES	Moveable Cup Holder - SST Cups	F10	S	S	S	S	O	O	O	•	•
	Bow Filler Bench	F11	•	O	O	O	O	•	•	•	•
	Ottoman Cooler	F12	•	O	O	O	O	O	•	•	
	Floor Matting Under Bench	F14	S	S	S	O	O	O	•	•	
	Deco Seat Cladding - BRONZE	F15	S	S	S	S	S	O	O	•	•
	Deco Seat Cladding - COGNAC	F15.1	O	O	O	O	O	O	O	•	•
	Deco Seat Cladding - CHARCOAL	F15.2	O	O	O	O	O	O	O	•	•
	SILVER Color-matched Seat Cladding	F15.3	O	O	O	O	O	O	O	O	O
	CREAM WHITE Color-matched Seat Cladding	F15.4	O	O	O	O	O	S	S	S	S
	BUCKSKIN Color-matched Seat Cladding	F15.5	O	O	O	O	O	O	O	O	O
	SST Vent Covers for Seat Cladding	F16	S	S	S	O	O	O	O	•	•
	Privacy Curtain & Frame (Location Varies)	F17	•	•	•	SF	O*	O*	O*	O*	O*
	Trash Can Built in	F18	S	S	S	O*	O*	•	•	•	•
	PREMIUM Sound Package: Fusion RA-770 Radio, (6) 6.5" SG Lighted Speakers, 6-Channel Amp, Fusion D Mono Block Digital Amp, 10" Subwoofer, USB Audio Input and Charge	E1	S	S	S	O	O	O	O	•	•
	PREMIUM XL Sound Package: Fusion RA-770 Radio, (6) 7.7" SG Lighted Speakers, (2) 6.5" SG Lighted Speakers in tower, 8-Channel Amp, Fusion D Mono Block Digital Amp, 10" Subwoofer, USB Audio Input and Charge	E2	O	O	O	•	•	•	•	•	•
	Arch & Tower Canister speakers for Premium Sound System - Black	E3	O	O	O	O	O	O	•	•	•
	Arch & Tower Canister speakers for Premium Sound System - White	E3.1	O	O	O	O	O	O	•	•	•
	High Performance Sound Package: Fusion RA-670 receiver, (6) blue lighted XS speakers, 6-channel amp, 10" subwoofer & USB audio input and charge	E4	•	•	•	O	O	O	O	•	•
	High Performance Arch & Tower Canister Speakers for High Performance Sound System.	E5	•	•	•	O	O	O	O	•	•
	Gold Plus sound Package: Fusion RA-670 Radio, (6) Fusion XS LED Lighted blue Speakers & Grills, Fusion 6-Channel Amp, USB Audio Input and Charge	E6	•	•	•	OV, W	•	•	•	•	•
	Gold Sound Package: Fusion RA-670 Radio, (4) Fusion XS Speakers, (4) Fusion XS Speaker Grills. USB Audio Input and Charge	E7	•	•	•	S	•	•	•	•	•
	Silver Plus Sound Package: (6) Fusion EL Speakers & Grills, Fusion 4-Channel Amp, Fusion RA-210 Radio, USB Audio Input and Charge	E8	•	•	•	•	OV	•	•	•	•
	Silver Sound Package: Fusion RA-210 Radio (4) Fusion EL Speakers (4) Fusion EL Speaker Grills, USB Audio Input and Charge	E9	•	•	•	•	S	•	•	•	•
	Bronze Plus Sound Package: Fusion RA-55 stereo, (6) EL speakers, 4-channel amp	E10	•	•	•	•	•	O	O	•	•
	Bronze Sound Package: Fusion RA-55 Radio, (4) Fusion EL Speakers, (4) Fusion EL Speaker Grills	E11	•	•	•	•	•	S	S	S	S
	USB/AUX Combined Input	E14	S	S	S	S	S	•	•	•	•
	Dual USB charging port on dash	E19	S	S	S	S	O	O	O	•	•
	USB charging Ports (Located in Furniture)	E19.1	S	S	S	S	S	S	S	S	S
	Garmin 743 XSV	E20	S	S	S	O	O	•	•	•	•
	Garmin 73 CV GPS	E23	•	•	•	W	O	O	O	•	•
	Garmin 5CV Fish/Depth	E24	•	•	•	F	O	O	O	O	O
	Vee Three Depth Gauge	E25	•	•	•	O	O	O	O	•	•

S = Standard
O = Option

• = Not Available
OV = Option but Standard on VRL & VRB Floorplans

F = Standard on Fish Models Only
SF = Standard Depending on Floorplan

W = Standard on Windshield Models
O* = Option Depending on Floorplan

Boats shown may show optional equipment.



F10



F11



F12



F14



F15



F15.1



F15.2



F15.3



F15.4



F15.5



F16



F17



F18



E1



E2



E3



E3.1



E4



E5



E6



E7



E8



E9



E10



E11



E14



E19



E19.1



E20



E23



E24



E25





GALLERY OF FEATURES & OPTIONS

			WAKETOON	EXCALIBUR	EXCALIBUR LTD	CATALINA	LSZ	VENTURE 85	VENTURE	VLS	VTX
PERFORMANCE PACKAGES	27" Waveglider Package	T1	•	S	S	O	O	O	•	•	•
	25" Waveglider Package	T1	•	•	•	O, W	O	O	O*	•	•
	25" Sport Performance Pontoon Package	T2	•	•	•	O	O, W	O	O*	•	•
	25" Transom	D15	•	•	•	FS	•	•	•	•	•
	In Floor Ski Storage	T10	S	•	•	•	•	•	•	•	•
	HPP Lifting Fins	T11	•	S	S	W, FS	•	•	•	•	•
	Side Protector Keel	T15	S	S	S	•	•	•	•	•	•
	Solid Bottom Keels	T18	•	•	•	•	•	•	•	•	•
WATER SPORTS	GX TOWER - Power Hinged	B1	•	S	S	•	•	•	•	•	•
	GX TOWER - Half Enclosure - Clear	B2	•	O	O	•	•	•	•	•	•
	GX TOWER - 2nd Bimini Top	B3	•	O	O	•	•	•	•	•	•
	EXTREME TOWER - Power hinged	B4	S	•	•	•	•	•	•	•	•
	EXTREME TOWER - Wakeboard Racks	B4.1	S	•	•	•	•	•	•	•	•
	DECO SPORT ARCH - 2.5" Round Frame - Stationary	B5	•	•	•	O*	O*	O*	•	•	•
	DECO SPORT TOWER - 2.5" Round Frame - Hinged Collapsible	B6	•	•	•	O*	O*	O*	•	•	•
	EX TOWER - Power Hinged	B7	•	•	•	O*	•	•	•	•	•
FISHING	Livewell Under Bench	M1	•	O	O	O	O	O	CRBF	•	•
	Extra Large Livewell/Baitwell Combo	M2	•	•	•	OF	OF	OF	•	•	•
	Rod Box	M3	•	•	•	OF	OF	CF, OF	•	•	•
	Helmstand Livewell	M4	•	•	•	QF	•	•	•	•	QF
	Large Rear Fishing Center w/Livewell	M5	•	•	•	F	F	F	•	•	•
	Small Rear Fishing Center w/Livewell	M6	•	•	•	•	•	•	SF	•	QF
	Baitwell Under Bench	M7	•	•	•	•	•	•	BF	•	•
	Built In Tackle Trays	M8	•	•	•	F	•	CF	•	•	•
	Sink w/External Water Supply	M9	•	•	•	F	•	CF	•	•	•
CANVAS	Full Camper Enclosure	B15	•	•	•	O	O	O	•	•	•
	Half Camper Enclosure	B16	•	•	•	O	O	O	•	•	•
	Seat Covers	B17	O	O	O	O	O	O	O	•	•
	Full Mooring Cover	B18	S	S	S	O	O	O	•	•	•
	Funship Upper Deck Mooring Cover	B19	•	•	•	OFS	•	•	•	•	•
	Playpen Cover	B20	•	•	•	•	•	•	O	S	S
MISC.	Pull Up SST Cleats	D1	S	S	S	O	O	O	O	•	•
	Extended Rear Patio Pad	D4	•	O	O	O	O	O	O	•	•
	Sandbar Rear Deck	D5	•	•	•	O*	O*	O*	O*	•	•
	Diving Board Lillipad	D9	•	O	O	O	O	O	O	•	•
	Premium Widestep SST Ladder	D10	S	S	S	S	•	•	•	•	•
	Ladder SST Telescoping	D10.1	•	•	•	•	S	F	•	•	•
	Ladder Aluminum Anodized 4 Step	D10.5	•	•	•	•	•	S	S	S	S
	Ski Tow Bar Universal	D14	S	S	S	O, W	O	O	O	O	O

S = Standard

O = Option

• = Not Available

CF = Center Console Fish Only

= Standard Equipment on Triple Pontoon Models

SF = Standard Depending on Floorplan

F = Standard on Fish Models Only

OF = Option on Fish Models Only

OFS = Option on Funship Only

W = Standard on Windshield Models

QF = Quad Fish

O* = Option Depending on Floorplan

CRBF = Standard on CRBF Only

BF = Standard on BF Only

FS = Standard on Funship Model

Boats shown may show optional equipment.



T10



T11



T15



T18



B1



B2



B3



B4



B4.1



B5



B6



B7



M1



M2



M3



M4



M5



M6



M7



M8



M9



B15



B16



B17



B18



B19



B20



D1



D4



D5



D9



D10



D10.1



D10.5



D14



HIGH PERFORMANCE OPTIONS



AMAZING SPEED, THE SMOOTHEST RIDE, & TWIN ENGINE DEPENDABILITY

Available on:

- Excalibur & Excalibur LTD – All floor plans (Twin 450 requires Mercury Joystick controls)
- Catalina 2585 & 2785 EL, ELW, ENT, QL, QLW, RJ, RL, VRB, VRBW, & VRL (Requires 27" Waveglider)

Includes:

- Twin Motor Mounts with Dual Pre Rig Controls
- Center Tube Step with Built in Ladder
- 4 Waveglider Lifting Fins for Maximum Twin Engine Turning
- 100 gallon fuel tank
- 5 Year Structural Warranty
- Rough Water Package



25" SPORT PERFORMANCE PACKAGE

Recommended for those desiring an economical 150HP - 200 HP equipped boat with very good weight and wave handling as well as very good performance. Includes integrated motor pod, 38-gallon transom direct fill fuel tank, 4 lifting fins, wave shield and SeaStar hydraulic steering (does not include a ski tow bar). **MAXIMUM HP RATING IS 200 HP.**



25" OR 27" WAVEGLIDER PACKAGE

This ultimate performance package allows you to achieve higher horsepower, and unrivaled performance. Recommend for those desiring maximum wave handling, speed and performance. Includes integrated motor pod, 58-gallon built-in fuel tank, 6 lifting fins, wave shield, ski tow bar and SeaStar hydraulic steering.

Boats shown may show optional equipment.



MORE THAN JUST A GREAT BOAT

- 2020 NMMA Innovation Award winner
- 2019 Michigan Manufacturer of the Year
- The only pontoon manufacturer to take multiple endurance trips across some of the most challenging waterways in the world
- The FIRST ever pontoon boat to pace an offshore powerboat race. 2785 Excalibur ELW powered by Twin Mercury 450's - Official Pace Boat of Roar Offshore Powerboat Races, October 2019 and October 2021
- The first winner of the NMMA Innovation award for an aluminum pontoon boat
- A perennial winner of the NMMA CSI Award
- One of the few privately owned pontoon boat manufacturers that knows and respects our customers and dealers
- One of the largest vertically integrated boat manufacturing facilities in the world

excellence
AWARDS



OFFICIAL PACE BOAT





GALLERY OF FEATURES & OPTIONS | Section Content

AVALON'S EXCLUSIVE HEAVY-DUTY MARINE SEAT COVERINGS ARE TESTED STRONGEST AGAINST TEARS, PUNCTURES AND STAINS.



You won't have to deal with mildew or fungus with Avalon's exclusive Flo Thru Ventilation™ Seating. Unlike plastic seating, our exclusive aluminum seat frames have external and internal air flow that dries out the seat compartments while moving and even when the boat is stored!



Avalon's unique suspension seat cushions provide soft comfortable cushions that don't bottom out on a hard support surface



Heavy-duty deck corner protection. Solid frame includes double solid full risers and double bolted motor pod all connected with double bolted hat channel crossbeams plus bow and stern .250 U bars.



Heavy-duty, stylishly designed, seat frame cladding eliminates fabric covering and provides a vented, beautiful accent to Avalon's Deco designs



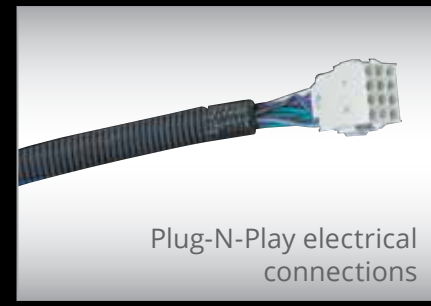
Our exclusive aluminum seat frames have 30 percent more storage than conventional plastic seat frames. Try putting all this in plastic seat storage!



Heavy-duty rub rail with vinyl bumper.



Reflective wall stripe makes boat easier to see at night.



Plug-N-Play electrical connections



Exclusive side protector keel - protects pontoon from side impact at docks, provides a spray diversion and makes pontoon structure stronger.



One-piece nose cone has heavy-duty double-wrapped, double-thickness .200 leading edge. Integrated nose cone splash fins cannot be broken off! Fins have welded edge guard.

**VERTICALLY INTEGRATED
90% of Boat is Made In-house**



Boats shown may show optional equipment.

Docklights built into walls are protected from impact and are not a trip hazard! Nose cone tips covered by deck are less prone to damage and are less dangerous than exposed.



Easy to clean, beautiful external wall.



LIFETIME LIMITED*
TRANSFERABLE STRUCTURAL WARRANTY

For non-commercial use, single engine equipped boats

**LIFETIME WARRANTY INCLUDES: Pontoons, crossbeams, seat frames,
motor mounts, wood decking, and rail structure**

10 Year Limited* Transferable bow to stern warranty on
all other components on your boat

** Warranty applies to 2023 model boats. See dealer for full warranty information
including limitations and exclusions.*



GALLERY OF FEATURES & OPTIONS

FLOORING



Silverwood



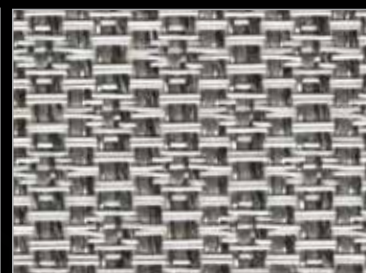
Boardwalk



Driftwood



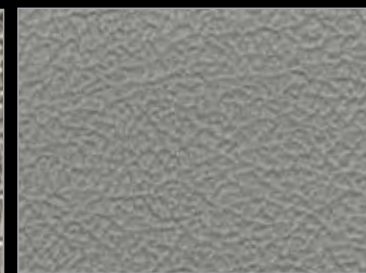
Slate Teak



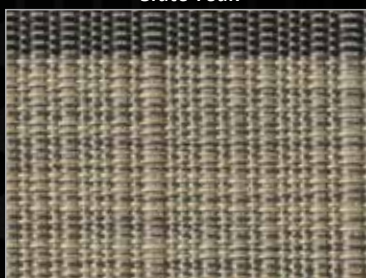
Luna Pearl



Riptide Shadow



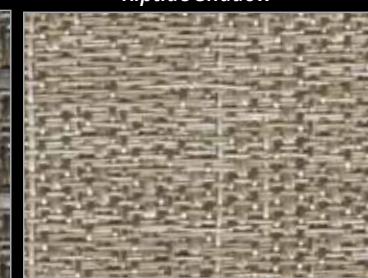
Gray



Natural Teak



Luna Sand

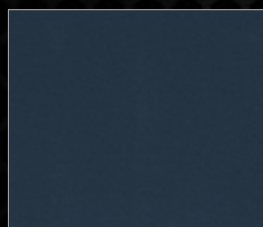


Riptide Dune

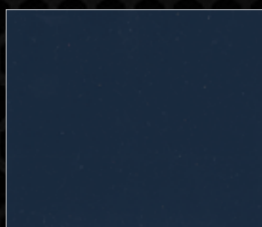


Taupe

WALL COLORS (ALL MODELS)



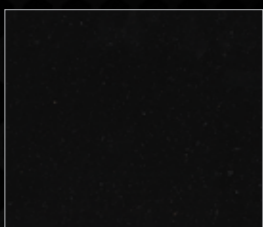
Steel Blue



Blue



Caribbean Blue



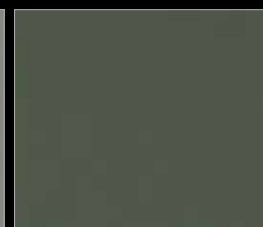
Black



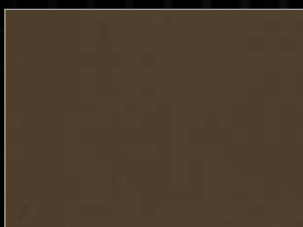
Charcoal



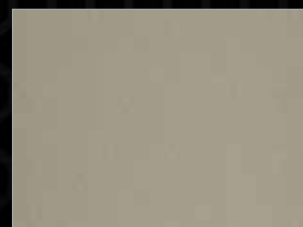
Silver



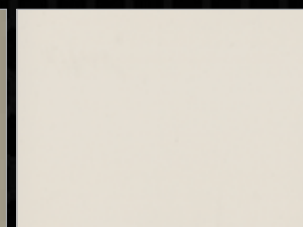
Sage Metallic



Bronze



Champagne



Cream White



White Flake



Burgundy



Red

Boats shown may show optional equipment.

PRIMARY VINYL



Graphite

Silver

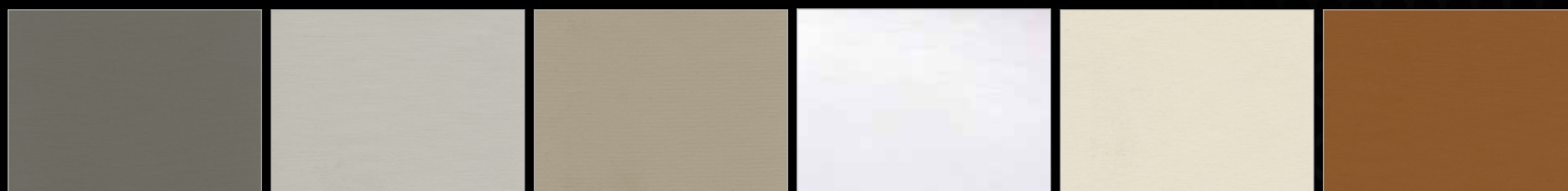
Buckskin

*Bright White
(Base 2 Vinyl Only)*

Cream White

Cognac

ULTRAFINE PRIMARY VINYL



*Koolfab Ultrafine
Graphite*

Ultrafine Silver

Ultrafine Buckskin

*Ultrafine Bright White
(Base 2 Vinyl Only)*

Ultrafine Cream White

*Koolfab Ultrafine
Cognac*

ACCENT VINYL



Neutra

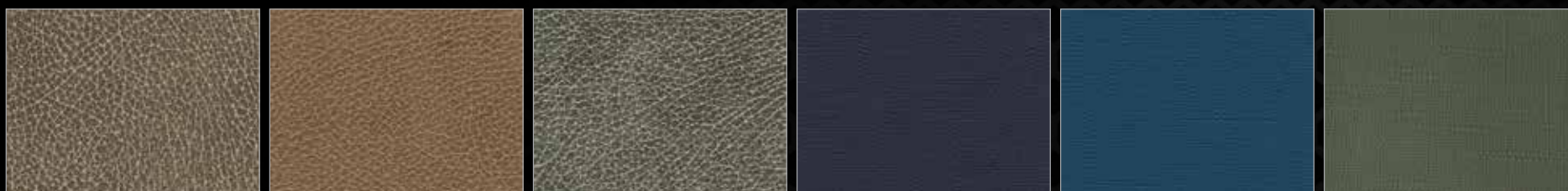
Topsail

Koolfab Charcoal

Koolfab Black

Burgundy

Red



Oak Barrel

Saddle

Stone

Indigo

Caribbean Blue

Sage



ADVENTURE I

Avalon is the only manufacturer who truly puts their products to the ultimate test! The Atlantic Ocean, the Pacific Ocean, the Gulf of Mexico, the Caribbean Sea, Lake Superior, Lake Michigan, the Mississippi... *need we say more?*



Baltimore to Key West - 2004



Key West to the Dry Tortugas - 2009



Los Angeles to Catalina Island to San Diego - 2014



Tampa to Cuba - 2017



Retracing the final voyage of the Edmund Fitzgerald on Lake Superior - 2018



Chicago to Mackinac Island - 2005



Ft. Lauderdale to Bimini Bahamas - 2006

Enjoy the details of all these great adventures at www.avalonpontoons.com

NMMA[®] CERTIFIED ✓ using ABYC[®] standards

The NMMA-Certified label on an Avalon pontoon boat lets you know it was built to meet, and often exceed, the industry's strictest quality and safety standards for critical components, such as electrical systems, powering, flotation, fuel systems, and navigation lights. Certified boats must also pass rigorous annual inspections from independent third-party inspectors. According to U.S. Coast Guard statistics, NMMA-Certified boats have been shown to be safer than non-certified boats.



A proud supporter of the
Travis Mills Foundation
foundation@travismills.org
"Never give up. Never quit."



www.facebook.com/AvalonPontoons
www.instagram.com/AvalonPontoons

Dimensions, capacities, ratings, and additional specifications plus complete warranty and service information are available from your Avalon dealer. Product illustrations and data within this catalog are based upon information available at the time of publication. Avalon reserves the right to make changes without notice or obligation. Ask your local Avalon dealer for the most current product specifications prior to purchase. Some of the equipment shown separately or on products illustrated in this catalog may be optional at extra cost. All Avalon boats meet or exceed the standards established by the ABYC and USCG flotation, fuel systems, ventilation, electrical, and safety.

PURE MICHIGAN[®]

OFFICIAL AVALON MERCHANDISE
www.attoonshop.com



Marine Industry
CSI
award
2012
Excellence in Customer Satisfaction

Avalon's superior innovation and customer satisfaction is recognized by the NMMA CSI AWARD for 2008 through 2022 and the Marine Industry 2012 and 2020 Innovation Awards!



903 Michigan Avenue, Alma, Michigan 48801
Toll Free: 800.334.2913 | 989.463.2112 | Fax: 989.463.8226
www.avalonpontoons.com