



**WIELAND MOTION**  
A DIVISION OF WIELAND DESIGNS, INC.

## BACK PANEL ADJUSTMENT AND REPLACEMENT INSTRUCTIONS

To adjust the back panel, all you will need is a prybar and a plastic or rubber mallet.

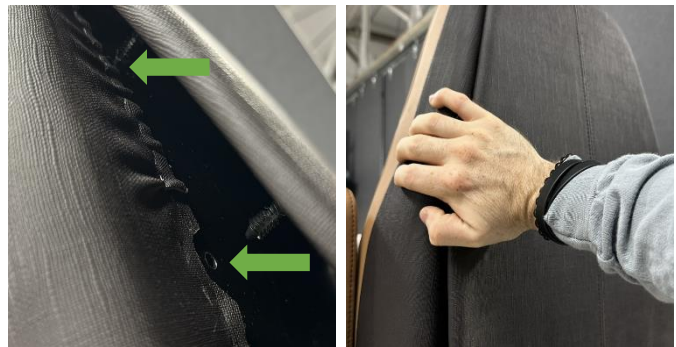
1. Start by carefully inserting the prybar at the bottom corner of the back panel.



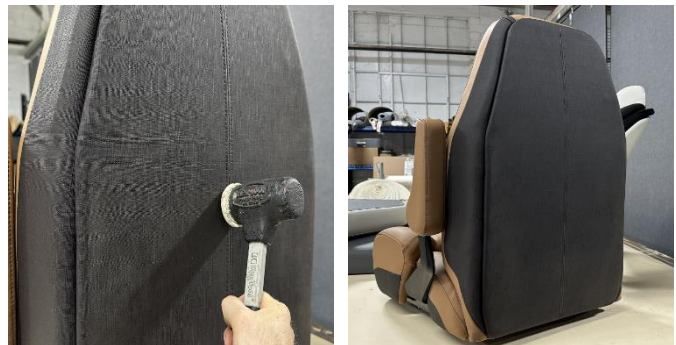
2. Do this all around the perimeter until all christmas trees have been popped out. There are 11 total.



3. There is a christmas tree at the center of the back panel. Insert the pry bar into the center and pry until it pops out of place.



4. To reinstall, start by aligning the christmas trees with their respective chamber. Push and insert only by hand.



5. Once all christmas trees have been set in place, use a plastic or rubber mallet to fully seat the back panel into place.