

Greetings!

Thank you for making us aware of the quality issue you have experienced with your chair. It is our desire to have quality product in the field and we have worked closely with our suppliers and production team to correct this quality concern. This replacement service kit will return your chair to working condition.

Provided in the service kit will be a new frame with an upholstered back and all new hardware. The fix takes less than 30-minutes to complete. All that is needed is to remove the slider, arms, and seat from the original frame and reinstall with the new hardware to the new frame.

If you see no issues with the gas cylinder on the original frame, remove this and keep as a backup/replacement part for future use.

Provided in the service kit are instructions on how to perform the replacement and the tools required.

If any questions arise, please reach out to our Marine Technician, Angel Garcia at [marinetech@wielanddesigns.com](mailto:marinetech@wielanddesigns.com) or (574)-250-5258.

Any other questions or concerns, feel free to reach out to myself, Lindsay Schneider at [lindsays@wielanddesigns.com](mailto:lindsays@wielanddesigns.com) or (574)-538-3560.

...



**Lindsay Schneider**

Marine Program Coordinator

O (574) 538-3560

M (260) 350-7520

901 E. Madison Street

Goshen, IN 46528

[www.wielanddesigns.com](http://www.wielanddesigns.com)

## Infinity Helm Field Fix

**Approximate Repair Time:** 15-25 minutes

**Service Kit Part #'s:**

**AVABEBRX – Standard High Back Seat**

020886 (5)  
017053 (11)  
011364 (5)  
020583 (6)  
017358 (4)  
002261 (4)

**AVABGBRX – Mid-Back Seat**

020886 (5)  
017053 (11)  
011364 (5)  
020583 (6)  
017358 (4)  
002261 (4)

**Required Tools:**

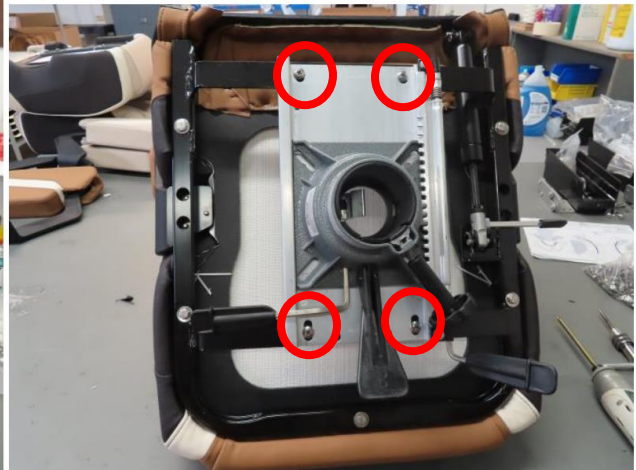
#3 Phillips bit  
7/16" nut driver  
Impact driver

**ALL NEW HARDWARE IS PROVIDED**

Apply a small amount of Ultra Tef-Gel (021281) to each screw's threads prior to installation

---

1. Detach the slider from the Helm unit by removing the hardware listed below:
  - (4) ¼"-20 X ¾ PH Truss MS SS Low Contour screws (017358)
  - (4) Washer, 1/4 Fender x 1.00" OD, SS (002261)



## Infinity Helm Field Fix

2. Detach the seat from the frame by removing the hardware listed below:
- (5) 1/4"-20 X 1 1/2" SST HX HD Full thread w/Patch bolts (020886)
  - (5) 1/4" ID x 5/8" OD SST flat washers (017053)
  - (5) Washer, 1/4" Flat, Nylon, White (011364)



3. After removing the seat, you now have access to the arm assemblies. Both will have to be detached from the frame. To do this, remove the following hardware:
- (6) 1/4"-20 X 1" SST Hex bolts full thread with patch (020583)
  - (6) 1/4" ID Flat washer, 5/8" OD SS (017053)



## Infinity Helm Field Fix

4. Grab the new helm frame with back upholstery. The new frame should look like the following images:



5. Verify the new frame has the gas spring installed as well as the Wieland Motion Badge shown below before continuing to the next steps:



## Infinity Helm Field Fix

6. Attach the RH and LH arm assemblies to the frame utilizing the hardware listed below:
- (6) ¼-20 X 1" SST Hex bolts full thread with patch (020583)
  - (6) ¼" ID Flat washer, 5/8" OD SS (0107053)



7. Install the standard seat using:
- (5) 1/4"-20 X 1 ½" SST HX HD Full thread w/Patch bolts (020886)
  - (5) ¼" ID x 5/8" OD SST flat washers (017053)
  - (5) Washer, 1/4" Flat, Nylon, White (011364)

Align the seat onto the frame, **hand starting the bolts**, ensuring that the nylon washers are in direct contact with the frame and the SST washers are between the nylon washers and the bolt heads. Then tighten them until snug. **USE IMPACT DRIVER ONLY ON THE LOWEST SETTING.** Bolts only need to be snug; washers should not bend under pressure.



## Infinity Helm Field Fix

8. Reattach the slider, 020682 Mainstay or 018856 Prestige, using:
- (4) ¼"-20 X ¾ PH Truss MS SS Low Contour screws (017358)
  - (4) Washer, 1/4 Fender x 1.00" OD, SS (002261)



\*\*Notes: Gas spring on original frame can be salvaged if in working condition as a backup/replacement part for future use.