

# VersiControl™ Quickstart Guide

[ MAR2020 ]

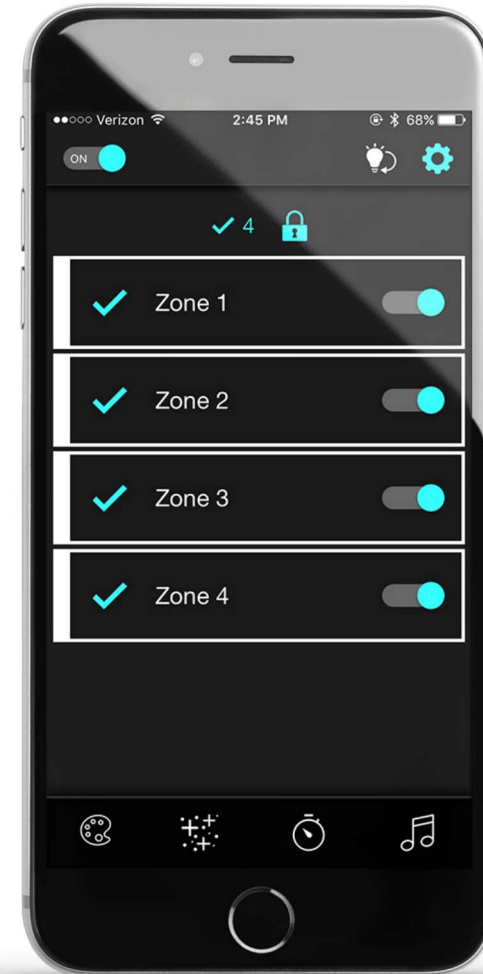
## How To Control Your VersiColor™ RGB & RGBW Lighting

### App Controller Quickstart

- App Home Screen Overview
- Settings
- Controlling Zones
- Changing Color
- Quick White Controls
- Color Special Effects
- Music-Beats Control
- On/Off Timer Controls

### Pad Controller Quickstart

- Pad Button Overview
- Zone Control Buttons
- Color Mode
- Fade Mode
- Brightness Mode
- Saving Settings



---

# Additional Resources

---



## DOWNLOAD THE APP

Search: ITC VersiControl



---

## VIDEO TUTORIALS

Located within the App's settings and online:  
<https://www.versicontrol.com/video-tutorials/>



---

## FREQUENTLY ASKED QUESTIONS

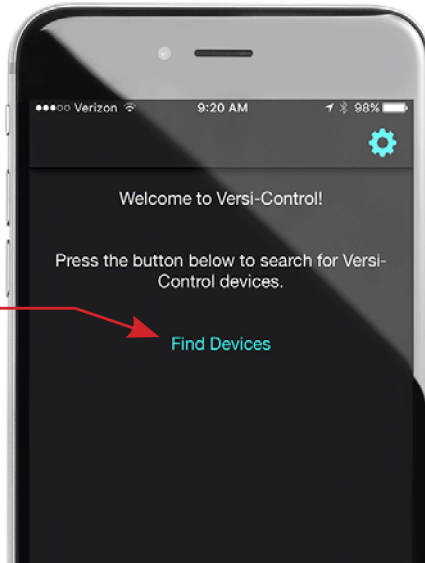
Located within the App's settings as well as:  
<https://www.versicontrol.com/faqs/>



# INITIAL SETUP - FINDING DEVICES

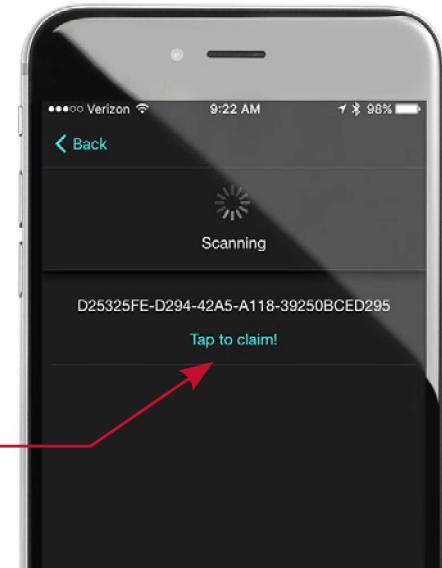
Upon starting the VersiControl App for the 1st time, you will encounter a series of set-up screens to find and connect to your control devices.

Press 'Find Devices' to initialize search



The app will begin scanning for on board devices and display the available devices once located.

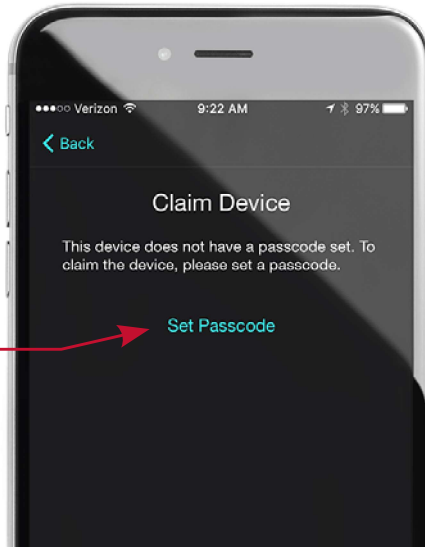
Press 'Tap to claim!' to connect app to the device.



During your initial set-up, you will be asked to set a passcode in order to claim the device.

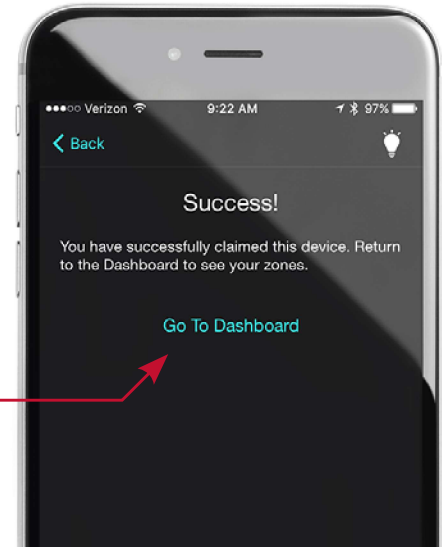
Press 'Set Passcode' to set up a passcode.

**NOTE:** Be sure to store the passcode in a secure place for future reference.



Once you have successfully set a passcode you will receive a Success! notification.

Press 'Go to Dashboard' to leave the initial set-up screen and move to the app dashboard.







# ZONE DASHBOARD OVERVIEW

## Main Power

Turns system on/off. When powered back on system returns to previous state

## All Zones Status Indicator

Indicates current status of all zones

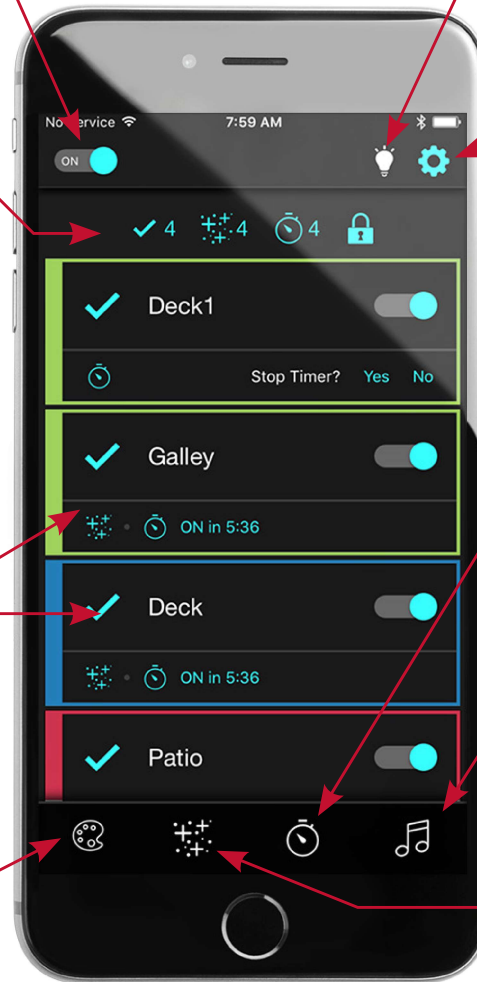
-  = No. of zones selected  
[ Example = 4 zones selected ]
-  = No. of zones in effects mode  
[ Example = 4 zones in effects mode ]
-  = No. of zones in timer mode  
[ Example = 4 zones in timer mode ]
-  = No. of zones in locked mode  
[ Example = no zones in locked mode ]

## Zone Control Bars

Controls each individual zone including: color, power, zone lock, timer, effects, and music-beats mode

## Color Selection Mode

Controls the selection of color for each zone. Includes camera mode and custom color.



## Quick White

Press once to turn all unlocked and active zones immediately white, press again to return all zones back to previous state

## Settings

Accesses system settings including: Help, Manage and Find Devices, About the app, and external web resources

## Timer Mode

Allows lights to be powered on and off via a set timer

## Music-Beats Mode

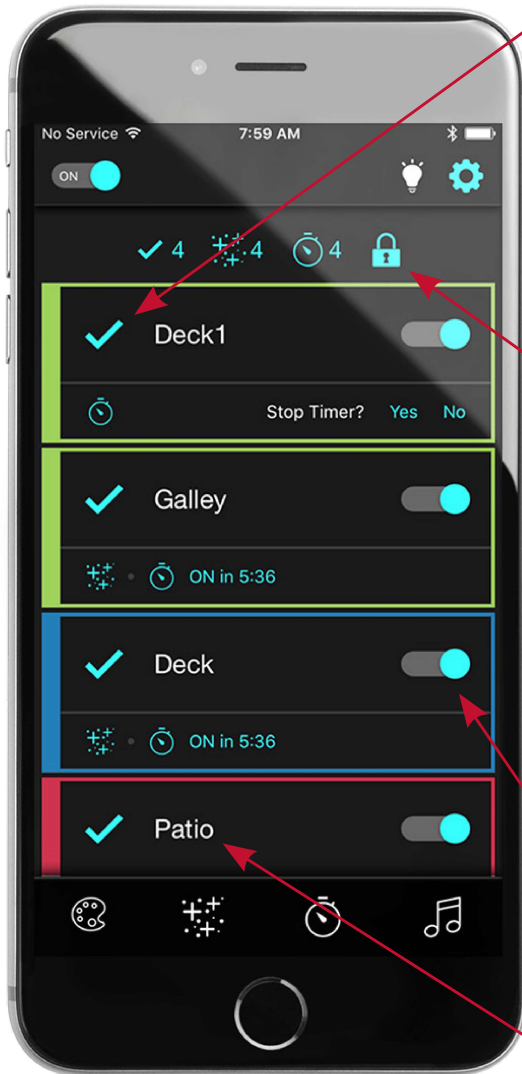
Allows light brightness to react to the beat of the music

## Special Effects Mode

Controls the selection of preset special color effects and allows for custom effects setup



# CONTROLLING ZONES



## Selecting Zone

Pressing the ✓ next to the zone name will select or deselect the zone to enable a color or mode change on selected zones. The ✓ will illuminate when the zone is selected and darken when the zone is deselected.

[ The example shows 4 zones selected. ]

## Locking Zones

Press the 🔒 symbol to move to the Edit Locks screen. On the Edit Locks screen press the 🔓 symbol to change from unlocked to locked on all desired zones.

All locked zones will be excluded from any color or mode changes until it is placed back in unlocked mode.

[ 🔒 = Locked   🔓 = Unlocked ]

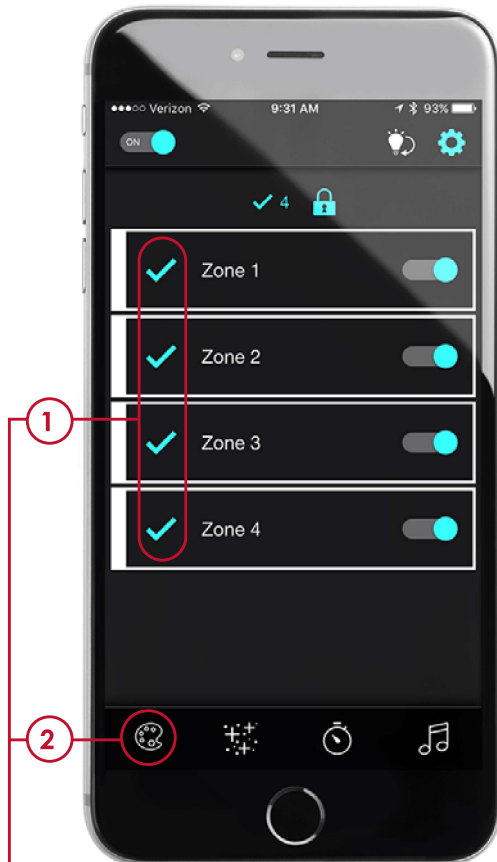
## Turn On/Off Individual Zone Power


Press the specific zone's power slider to turn on or off power to the zones individually

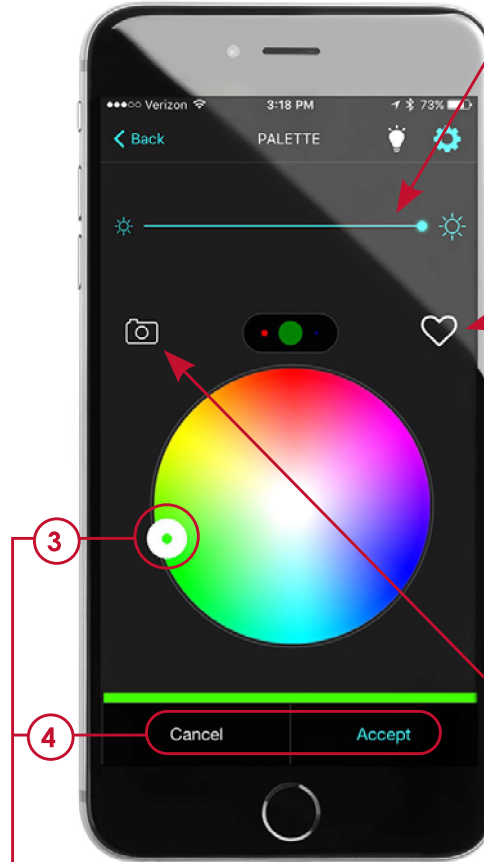
## Assign and Change Zone Name

Press and hold the zone name to customize or update the zone name.

# CHANGING COLOR - RGB



**1:** With all desired zones selected,  
**2:** Press the  symbol to move to the color palette screen to change light color to all the actively selected zones




**3:** Move the color selection circle around until the desired color displays inside the circle.  
**4:** Press 'Accept' to change the color, or 'Cancel' to abort and return to zone dashboard

## Brightness Adjustment

Slide to adjust and dim the brightness level of the light output

## Save Favorite Colors

Press the  symbol to open the favorites pallet, then press the '+' symbol to save as a favorite for quick future use.


## Camera Color Change

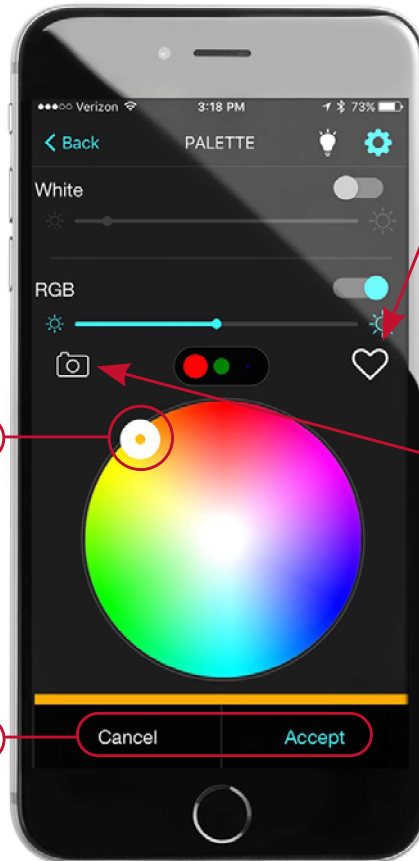
Press the  symbol to move into camera color capture mode to select your lights' color using your phone's built-in camera.

[ More on this feature on the next square ]

# CHANGING COLOR - RGBW




**1:** With all desired zones selected,  
**2:** Press the  symbol to move to the color palette screen to change light color to all the actively selected zones



**3:** Move the color selection circle around until the desired color displays inside the circle.  
**4:** Press 'Accept' to change the color, or 'Cancel' to abort and return to zone dashboard

## Save Favorite Colors

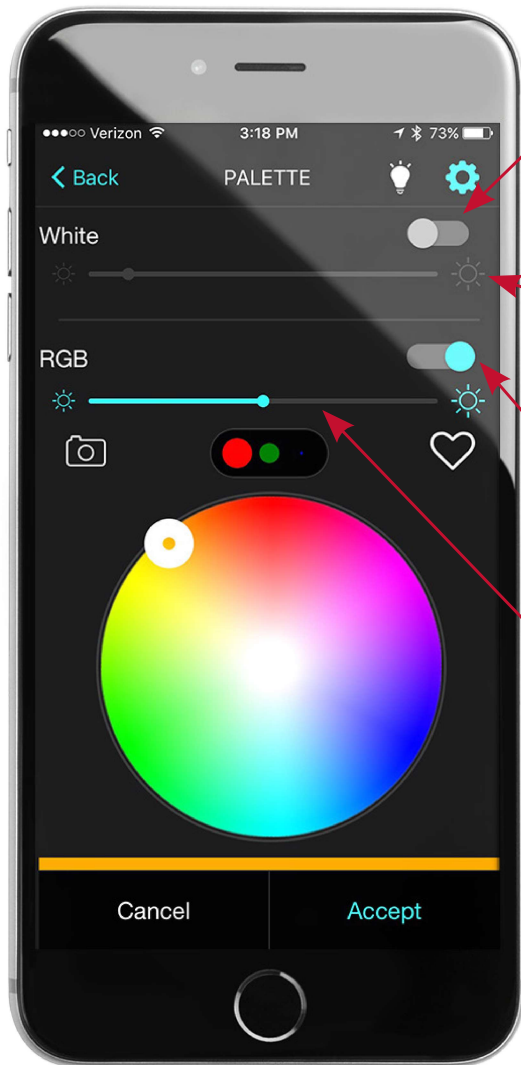
Press the  symbol to open the favorites pallet, then press the '+' symbol to save as a favorite for quick future use.

## Camera Color Change

Press the  symbol to move into camera color capture mode to select your lights' color using your phone's built-in camera.

[ More on this feature on the next square ]

# CHANGING COLOR - RGBW CONT.



## White On/Off

Turns white LED chips on/off.

## White Brightness Control

Slide to adjust and dim the brightness level of the white light output

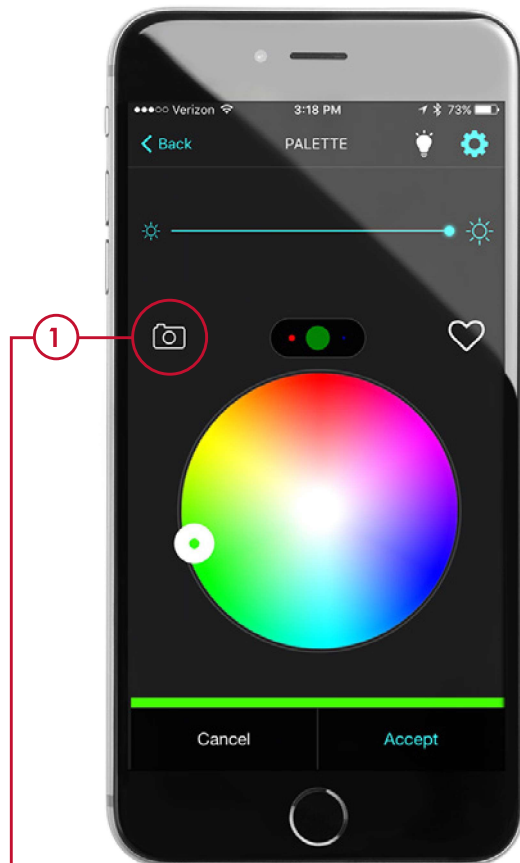
## RGB On/Off


Turns RGB LED chips on/off.

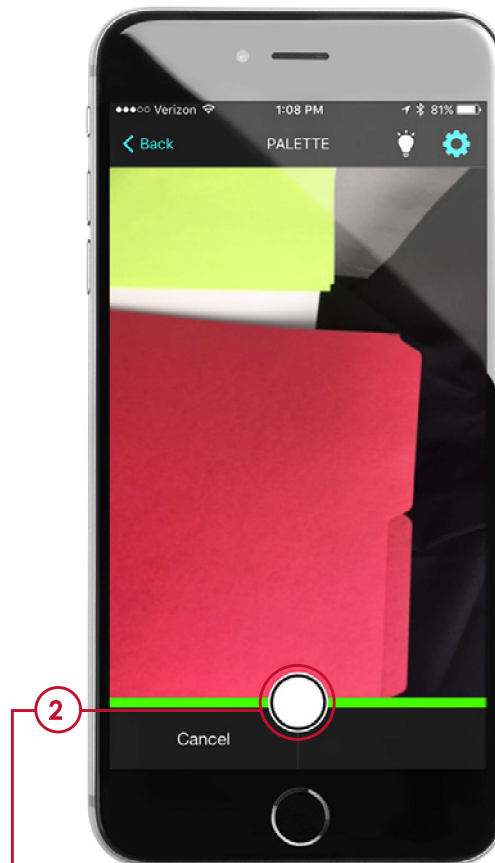
## RGB Brightness Control

Slide to adjust and dim the brightness level of the RGB light output

# SELECTING COLOR WITH CAMERA FEATURE - RGB

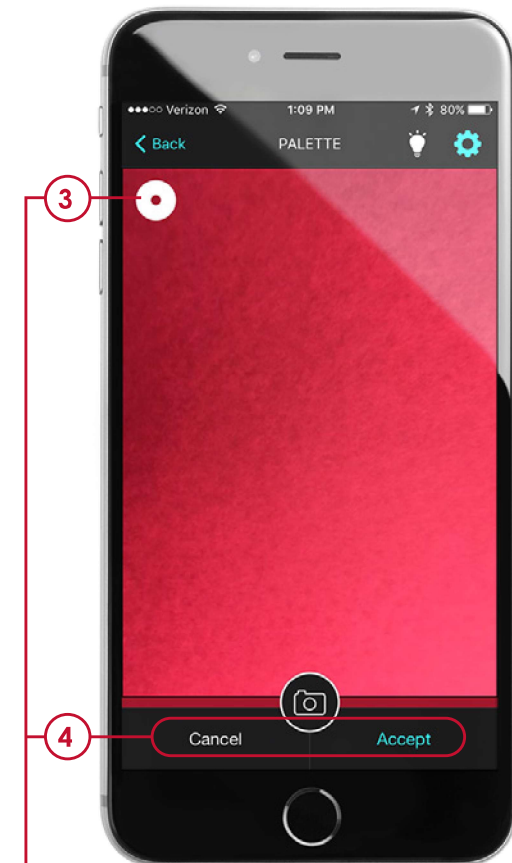


**1:** From the Palette screen, press the  symbol to use your phone's built-in camera to capture an image of a color to match to your lights.



**2:** On the image capture screen, zoom in on your desired color and press the capture button to take the picture.

Press cancel to abort and return to the palette screen.

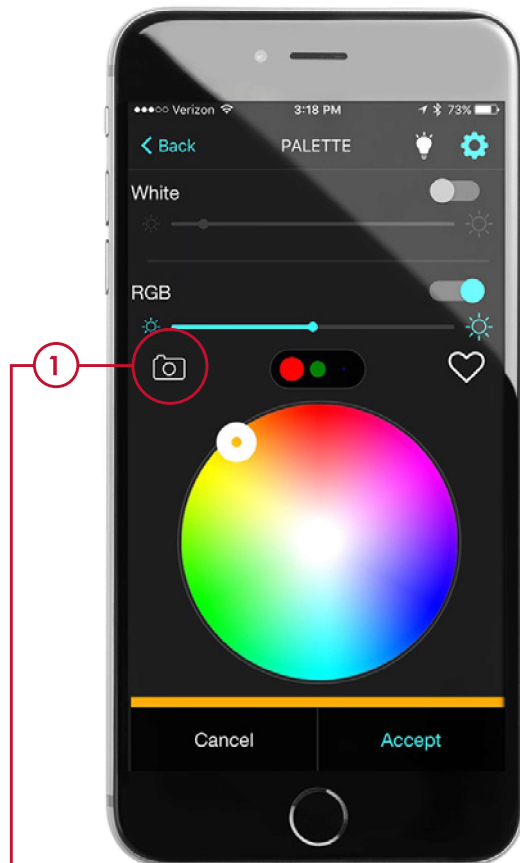



**3:** Slide the color selection circle around the image to choose the perfect color and **4:** press 'Accept' to change the light color of all the selected zones.

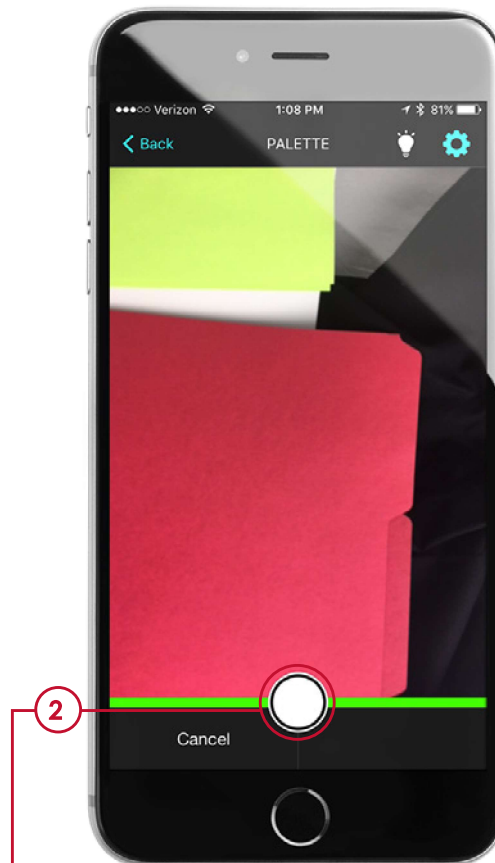
Press cancel to abort and return to the palette screen



# SELECTING COLOR WITH CAMERA FEATURE - RGBW

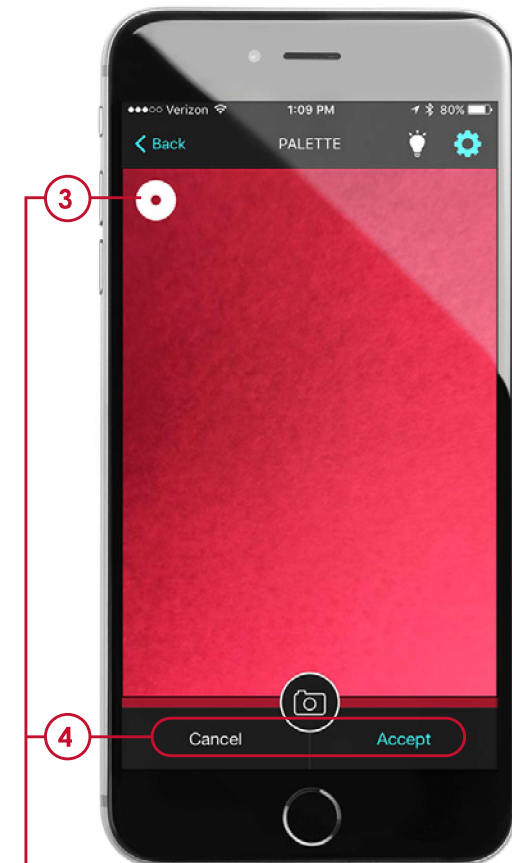


**1:** From the Palette screen, press the  symbol to use your phone's built-in camera to capture an image of a color to match to your lights.



**2:** On the image capture screen, zoom in on your desired color and press the capture button to take the picture.

Press cancel to abort and return to the palette screen.




**3:** Slide the color selection circle around the image to choose the perfect color and **4:** press 'Accept' to change the light color of all the selected zones.

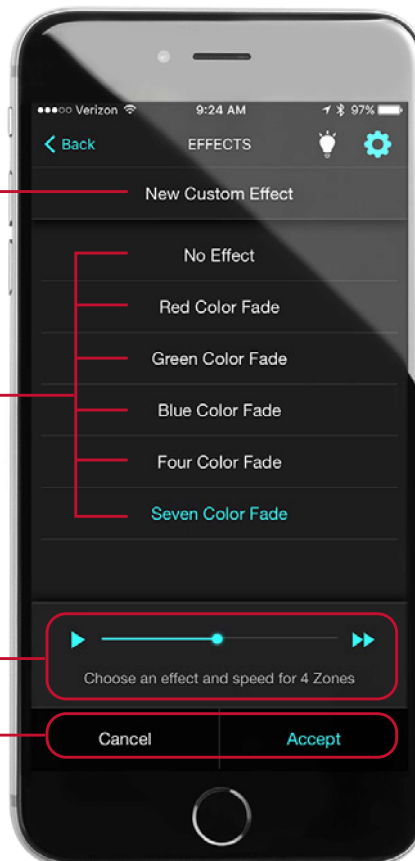
Press cancel to abort and return to the palette screen



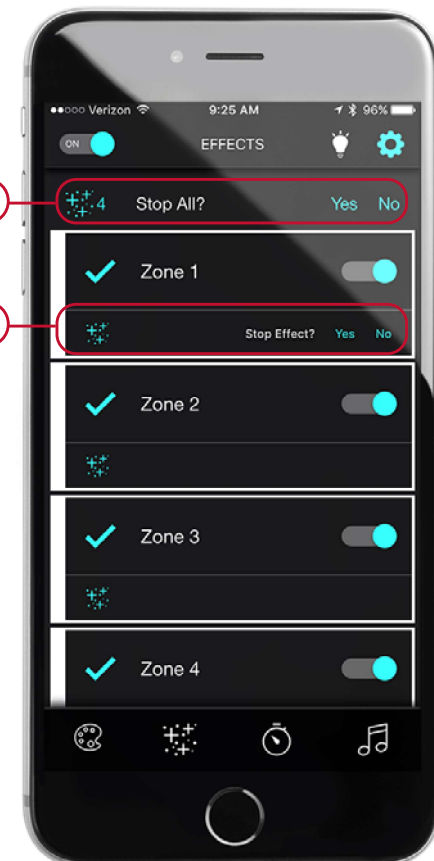
# SPECIAL EFFECTS MODE



**1:** With all desired zones selected, **2:** press the  symbol to move to the effects mode screen to add an effect to all the actively selected zones



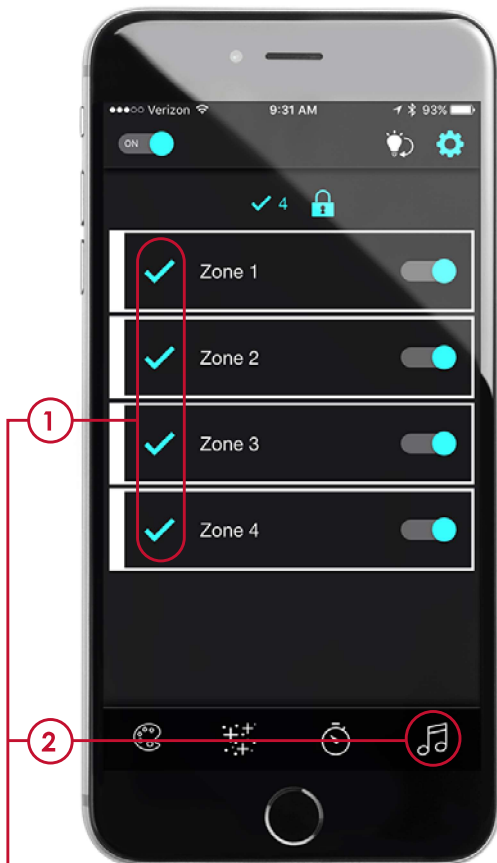
**3:** Select a preset effect or choose **4:** 'New Custom Effect' to create your own and assign a name to your custom effect  
**5:** Choose the speed of the effect, then **6:** press 'Accept' to enable the effect on all actively selected zones



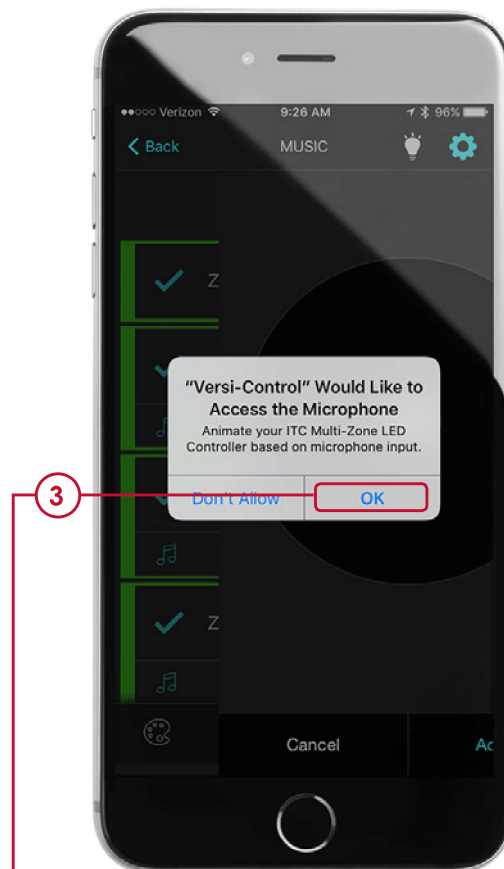
**7:** To stop all effects, tap the effects indicator in the status bar. Tap yes to stop all effects.

**8:** To stop effects individually, tap the effects indicator on the zone and tap yes to stop effect

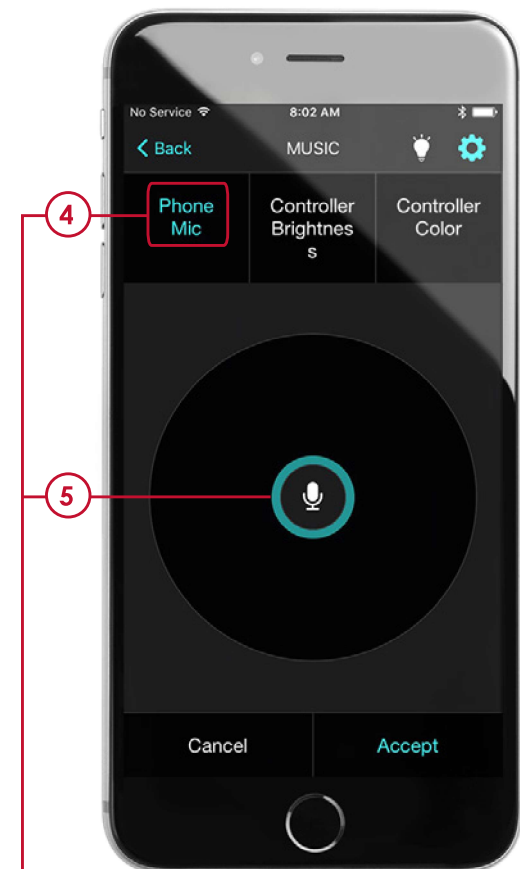
# MUSIC-BEATS CONTROLS



**1:** With all desired zones selected, **2:** press the 🎵 symbol to move to the music beats mode screen to enable your lights to react to the beat of the music

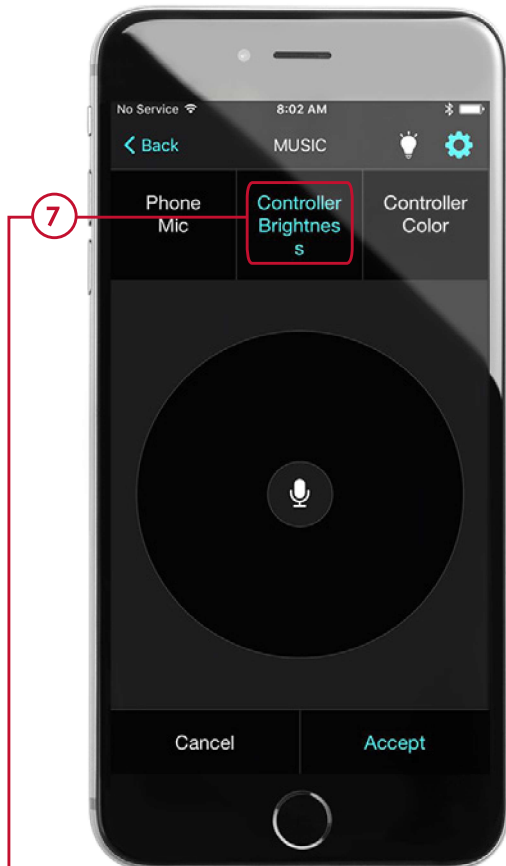


Upon selecting music beats mode for the first time, you will have to give permission to access your phone's microphone. **3:** Tap 'OK' to allow access to microphone input.

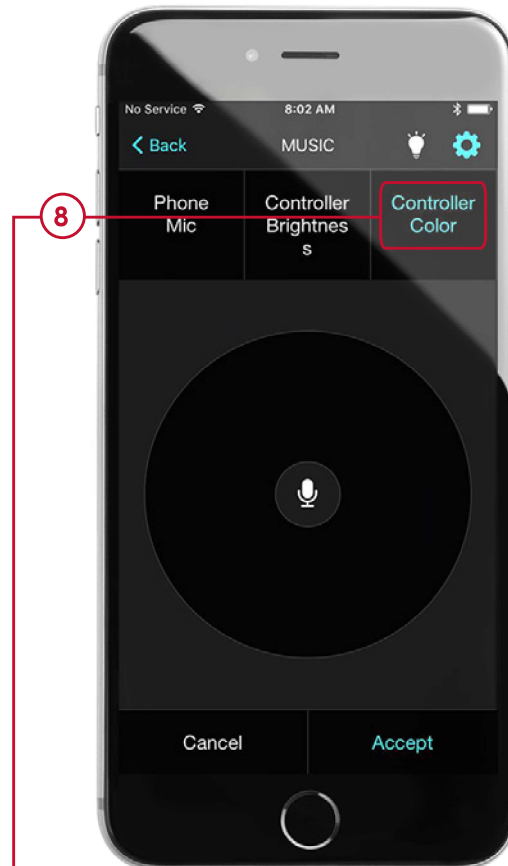


**5:** Select Phone Mic to enable your lights to change brightness based on the beat of the music through the phone mic. **6:** The beat indicator circle will react to the beat of the music.

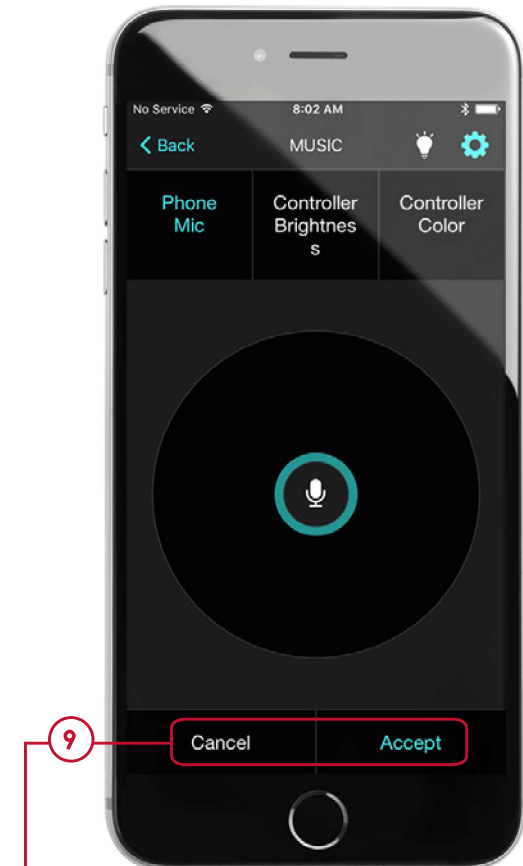
# MUSIC-BEATS CONTROLS



**7:** Select Controller Brightness to enable your lights to change brightness based on beat of the music.

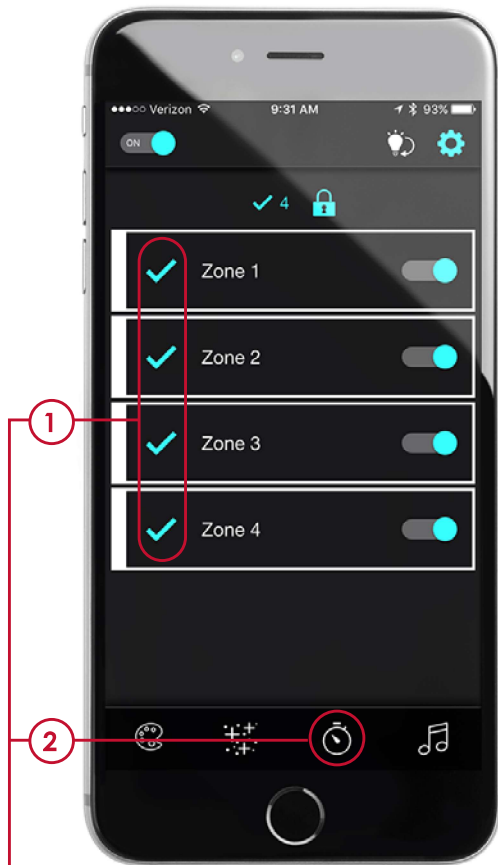


**8:** Select Controller Color to enable your lights to change color and brightness based on beat of the music.

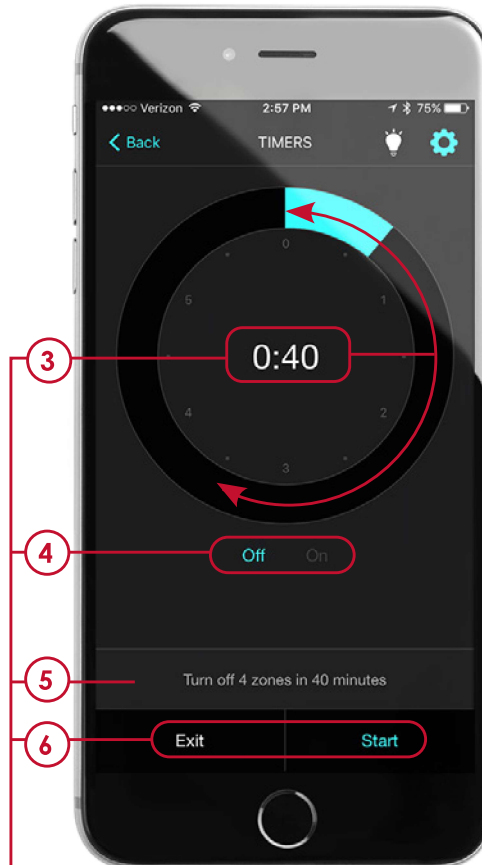


**9:** Tap 'Accept' to enable the beat mode selection or cancel to abort.

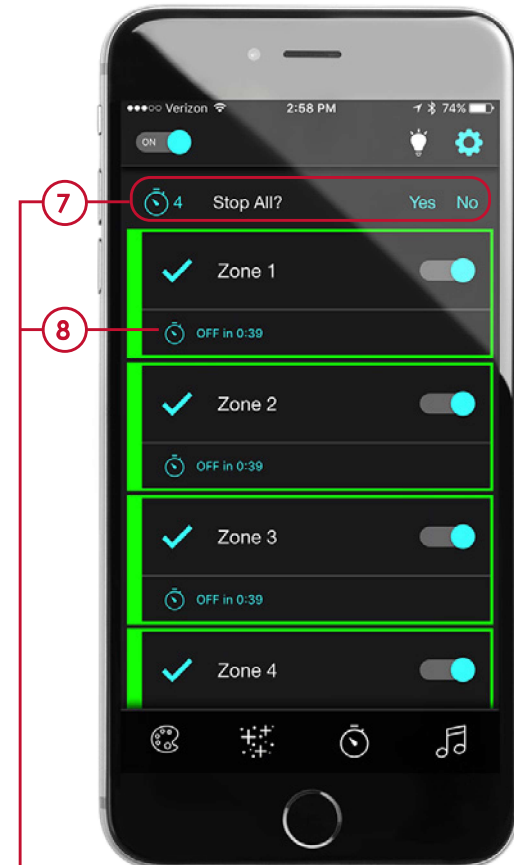
# CONTROLLING ON/OFF TIMER



**1:** With all desired zones selected, **2:** press the ⌚ symbol to move to the timer mode screen to set a Power On or Power Off Timer on your actively selected zones.



**3:** Rotate the clock slider to the desired time, **4:** choose to power on or off, **5:** confirm your selection, **6:** then choose start to enable the timer on each of the selected zones.



Once enabled, the timer countdown will display on each zone. **7:** All timers can be stopped together by tapping the timer symbol on the zone status bar.

**8:** Each individual zone timer can be stopped by tapping the zone specific timer.

**NOTE:** Once activated, the timer will remain active without the presence of phone until time expires

# PAD CONTROLLER OVERVIEW

## Color Indicator

- If adjusting colors, this will indicate the current color selected
- If Quick White button is pressed LED will turn white and flash

## Main Power

Turns system on/off and saves the current light settings

## Color Select Mode

Enables RGB color changes within currently selected zone

## Zone Select Buttons

Enables selection of zones 1- 4 to initiate a color or mode change within that zone

## Brightness Adjust Mode

Enables the ability to adjust the brightness of light output or the brightness of the pad itself

## Effects Mode

Enables seven color fade within the active zones

## Left & Right Buttons

[ Functionality depends on current mode ]

- **Color Mode:** Cycle through RGB Colors
- **Dim Mode:** Increase or decrease brightness of light
- **Fade Mode:** Increase or decrease fade speed

## Quick White Button

- One press turns all unlocked and active zones white
- Press again to return to previous state





# POWER/QUICK WHITE/ARROWS FUNCTION

## Main Power

- Once the power button is pressed the pad's back light LEDs located behind the arrow keys, the power button, and the quick white button will illuminate.
- All zones LEDs will illuminate based on their last state when powered off
- Powering down the switch will save the current light setting. The next power on will return system lights to its previous state.



## Quick White

- The first press of quick white will turn all unlocked and active zones to white
- The center color indicator will turn white and blink indicating quick white mode is active
  - When in Quick White mode, you will be unable to change any color, mode, or brightness until Quick White is deactivated
- Press the Quick White button again to deactivate Quick White and return to the previous state

## Arrow Key Operation

- The two arrow keys operate as follows within a mode:
  - ← decreases mode function
  - increases mode function
- **Color Mode:** Arrows will cycle through RGB colors

**Brightness Mode:** Arrows will increase/decrease the brightness of light output

**Effects Mode:** Arrows will increase/decrease the speed of the 7 color fade

- **Passcode Reset:** Press and hold both arrow keys together to reset the passcode. This function will also unlock any zone that was previously locked out by the phone app or controller.



# ZONE BUTTON CONTROLS

The zone buttons labeled 1 - 4 control the states of an individual zone. The LED behind each zone button indicates what state the zone is currently operating in: Off State, On state, and Adjust state

- **OFF STATE**

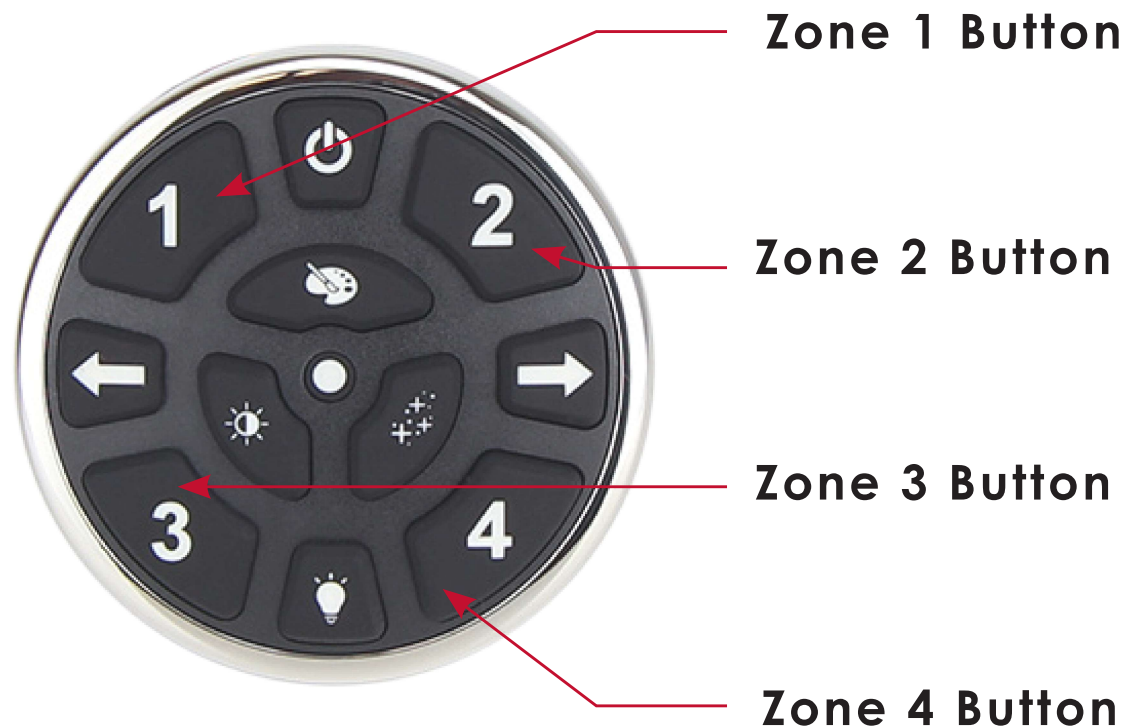
Indicator LED behind the zone number is off and zone is off. All lights connected to that zone are powered off

- **ON STATE**

Indicator LED behind the zone number is on and solid. The zone is powered on and the lights are turned on in the selected zone

- **ADJUST STATE**

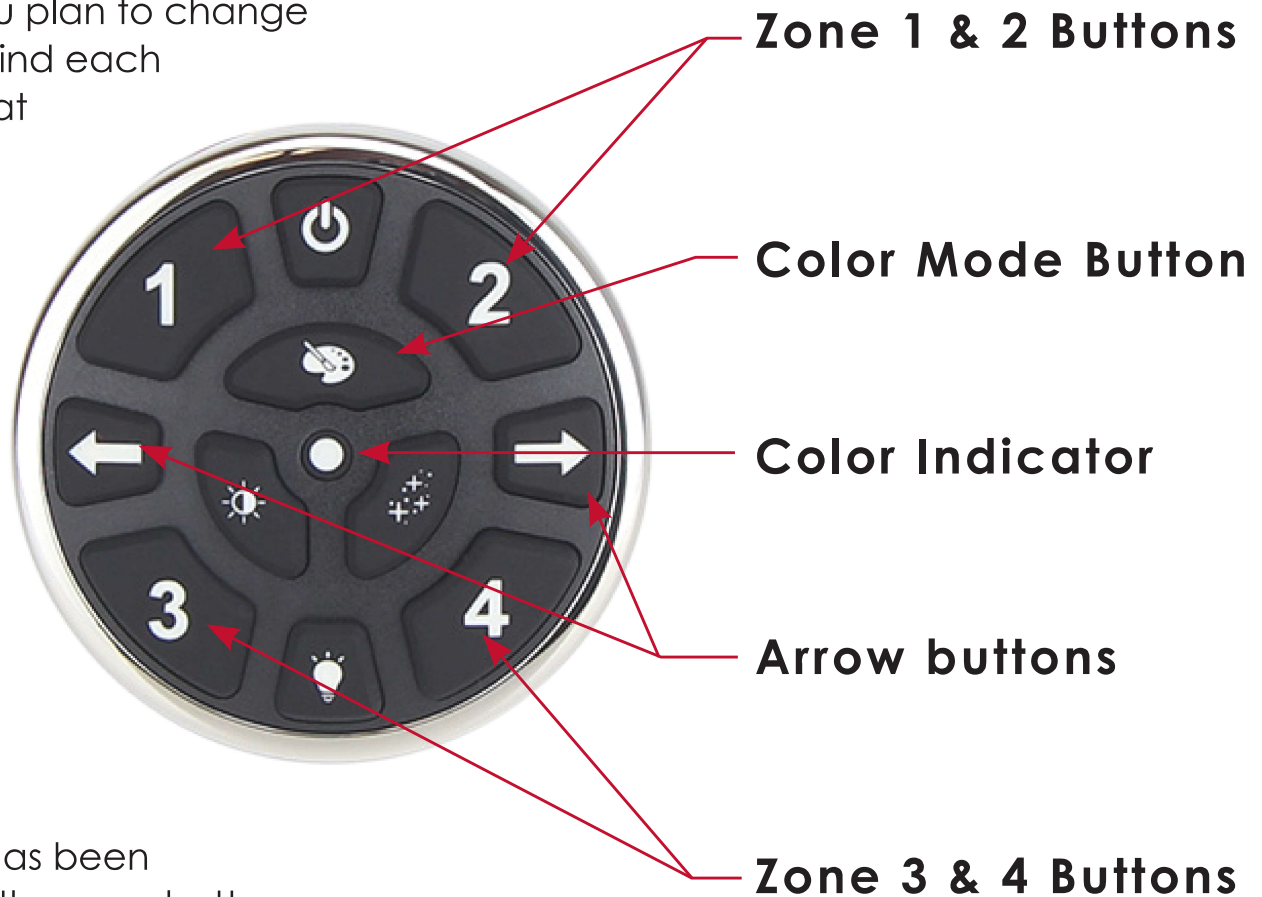
Indicator LED behind the zone number is blinking and the zone is in adjust mode. Selecting one of the 3 mode buttons ( Color, Effects, Brightness ) will place the zone into that mode. ( There is a 30 second timeout if no adjustments are made )



# CHANGING COLOR

## Changing Color in Selected Zones

1. Press the zones in which you plan to change the LED color. The LED behind each zone will blink indicating that zone is in adjust mode
2. Press the Color Mode button to put the keypad in color adjust mode
3. Press the ← → buttons to cycle through the available RGB color options. There are 21 possible color selections using the controller pad
4. The center color indicator will change to display the selected color
5. Once a desired LED color has been determined, press each of the zone buttons that are currently in adjust mode again to end adjust mode



# EFFECTS MODE CONTROLS

## Controlling Zone Effects

1. Press the zones in which you plan to enable the LED color change fade effect. The LED behind each zone will blink indicating that zone is in adjust mode
2. Press the Effects Mode button to put the keypad in effects adjustment mode
3. Press the ← → buttons to decrease or increase the speed of the seven color fade effect
4. The effect fades between seven colors: yellow, white, cyan, blue, red, purple, green
5. Once a desired LED fade speed has been determined, press each of the zone buttons that are currently in adjust mode again to end adjust mode



**Zone 1 & 2 Buttons**

**Color Indicator**

**Effects Mode Button**

**Arrow buttons**

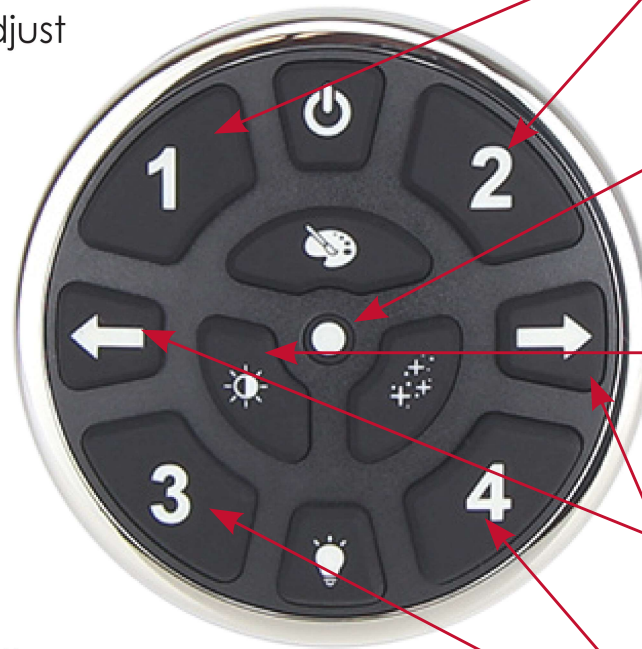
**Zone 3 & 4 Buttons**

**Note:** The center color indicator will not change color

# BRIGHTNESS CONTROLS

## Controlling Light Brightness

1. Press the zones in which you plan to adjust the LED light brightness. The LED behind each zone will blink indicating that zone is in adjust mode
2. Press the Brightness Mode button to put the keypad in brightness adjust mode
3. Press the ← → buttons to decrease or increase the brightness of the light output
4. Once a desired LED brightness has been determined, press each of the zone buttons that are currently in adjust mode again to end adjust mode



**Zone 1 & 2 Buttons**

**Color Indicator**

**Brightness Mode Button**

**Arrow buttons**

**Zone 3 & 4 Buttons**

**Note:** To adjust the brightness of the pad itself, press the brightness adjust mode button (without any zones selected) and use the arrows to adjust the pad's brightness as desired.