



SIMPLY. CLEARLY. BETTER.



# HELIX<sup>®</sup> SERIES

## Operations Summary Guide

---

- ▶ **SAFETY INFORMATION!** You must read the *Important Information about your Humminbird® Product* insert (included with your control head) before proceeding with this operations summary guide.
- ▶ **FEATURES:** A transducer is required to enable sonar, and a GPS fix is required to enable navigation. Your control head may not have all the features described in this guide. Also, the illustrations may not look exactly like the screens on your control head, but your unit will operate in a similar way. See our Web site at [humminbird.com](http://humminbird.com) for compatibility and purchasing information.
- ▶ **SD OR MICROSD CARDS:** Your control head may be compatible with either an SD card or a microSD card. Please see your control head operations manual for compatibility details.
- ▶ **OPERATIONS MANUALS:** The complete operations manuals for your control head and accessories are available on our Web site at [humminbird.com](http://humminbird.com). Also, see *Manage your Humminbird: Use Manuals on your Device* for more information.

ChartSelect®, CoastMaster™, Down Imaging®, Fish ID+™, HELIX®, Humminbird®, LakeMaster®, Side Imaging®, and SwitchFire® are trademarked by or registered trademarks of Johnson Outdoors Marine Electronics, Inc.

Adobe, Acrobat, Adobe PDF, and Reader are either registered trademarks or trademarks of Adobe Systems Incorporated in the United States and/or other countries.

The *Bluetooth*® word mark and logos are registered trademarks owned by the Bluetooth SIG, Inc. and any use of such marks by Johnson Outdoors, Inc. is under license. Other trademarks and trade names are those of their respective owners.

microSD and SD are trademarks or registered trademarks of SD-3C, LLC in the United States, other countries or both.

Navionics® is a registered trademark of Navionics S.p.A.

# Table of Contents

---

Key Functions Overview .....	1
Menu Overview .....	2
Getting Started .....	4
Setting up the Control Head .....	5
Views .....	8
Sonar .....	13
Side Imaging .....	17
Down Imaging .....	23
Navigation .....	27
Manage your Humminbird .....	33
Contact Humminbird .....	36

# KEY FUNCTIONS Overview

---



**POWER/LIGHT key:** Press once to power on the control head. During operation, press once to use Sonar, Light, Background, and Standby menus. Press and hold to power off the control head.

---



**ZOOM In/Out keys:** Press once to adjust the zoom range in Sonar Zoom View, the sensitivity in sonar views (Sonar, DI, SI), and the chart scale in Chart Views.

**Active Cursor:** Press once to zoom in or out of the active cursor area in Side Imaging® and Down Imaging® Views.

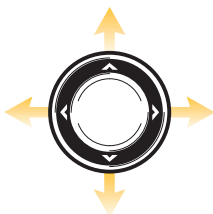
---



**VIEW key:** Press once to display the next view in the View Rotation (see *View Rotation Overview*).

Press and hold to open the Views X-Press Menu.

---



**CURSOR CONTROL key:** Press once OR press and hold any arrow on the key to freeze the display and move the active cursor in all Sonar and Chart Views.

Press any arrow on the key to browse the menu system, select a menu, and change or activate menu settings (see *Menu Overview*).

---



**MENU key:** Press once to open an X-Press Menu.

Press twice to open the Main Menu (see *Menu Overview*).

---



**CHECK/INFO key:** Press once to open the Chart Info submenu in Chart View.

Press once to switch frequencies in sonar views (if available).

**Active Cursor:** Press once to display chart information in Chart View.

---



**MARK key:** Press once to mark a waypoint at the boat's position.

**Active Cursor:** Press twice to mark a waypoint at the cursor position.

Press and hold to save a screen snapshot to the installed SD or microSD card.

---



**GOTO/MOB key:** Press once to display saved navigation data.

**Active Cursor:** Press twice to mark and start navigation towards a waypoint.

**Man Overboard (MOB):** Press and hold to activate Man Overboard. See your control head operations manual for more information about this feature.

---



**EXIT key:** Press once to close a menu, exit active cursor mode, or turn off an alarm. Press once to display the previous view in the view rotation (see *View Rotation Overview*).

---



**VIEW SHORTCUT key:** Press and hold to save a shortcut to the on-screen view.

Press once to display the view saved to the key (see *View Rotation Overview*).

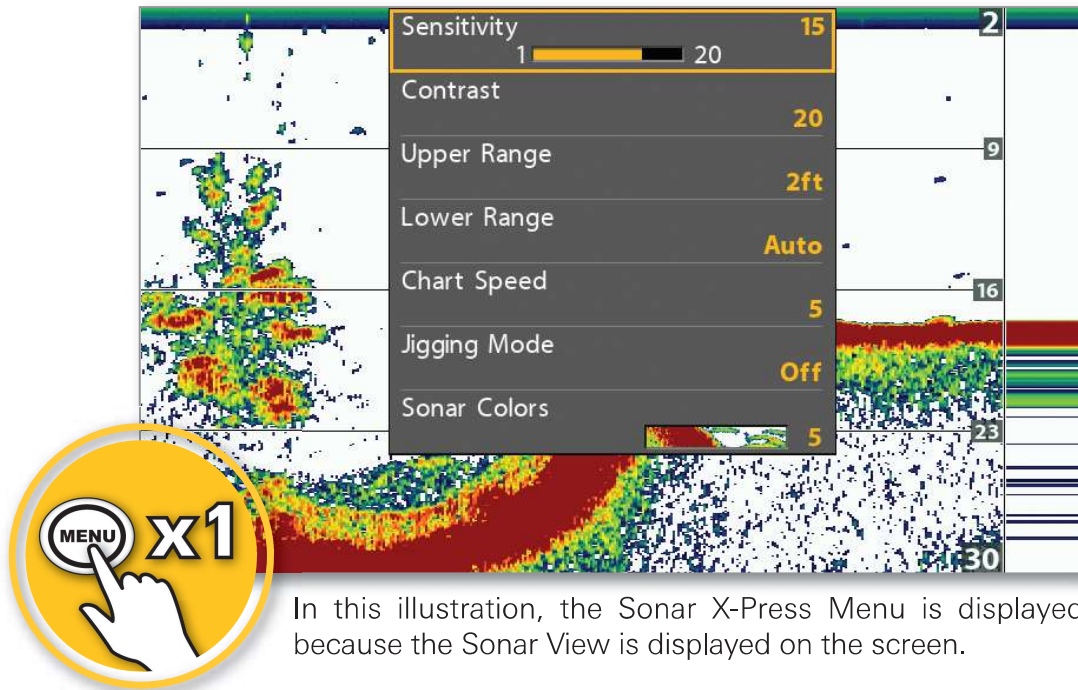
---

# MENU Overview

## ► Open an X-Press Menu

X-Press Menus display menu options that are related to the view on the screen and the current operation mode (such as navigation).

### Sonar X-Press Menu

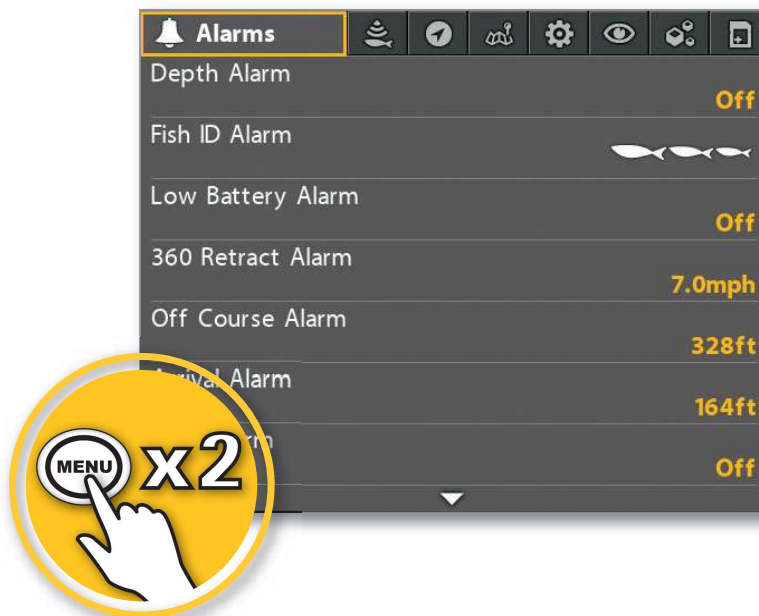


In this illustration, the Sonar X-Press Menu is displayed because the Sonar View is displayed on the screen.

## ► Open the Main Menu

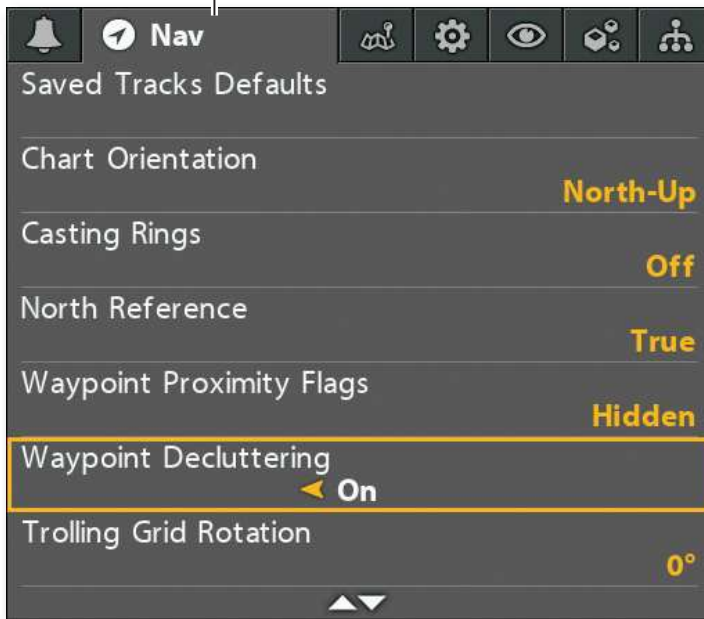
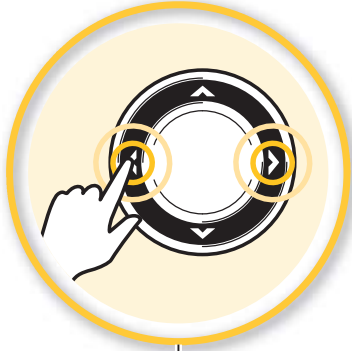
The Main Menu is divided into tabbed categories (Alarms, Sonar, Chart, etc.). The available tabs will vary by model. See your control head operations manual for more details.

### Main Menu



## ▶ Select a Menu and Change the Setting

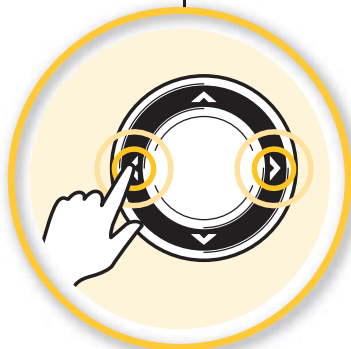
Select a Tab



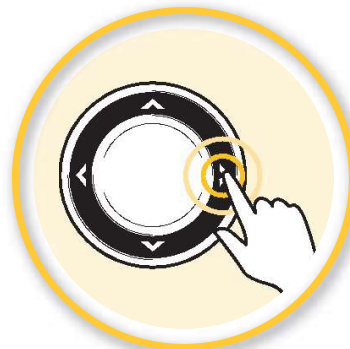
Select a Menu



Change a Menu Setting



Start an Action or Open a Submenu



# Getting **STARTED**

## ▶ **Power On/Off**

**ON: Press Once**



**OFF: Press and Hold**



## ▶ **Select the Start-Up Mode**

**Press the MENU key once while the control head is powering on.**

**On the Water:** If a transducer is connected to the control head, **Normal** mode will be selected automatically. If a transducer is not connected, select Normal, and press the RIGHT Cursor key.

**Review System Connections:** Select **System Status** and then press the VIEW key until Accessory Test View is displayed on-screen. During Normal mode, open the Views X-Press Menu > System > Accessory Test.

### Accessory Test View

Accessory Test	
360 Imaging	UNCONNECTED
GPS	CONNECTED
i-Pilot	UNCONNECTED
NMEA2K Gateway	CONNECTED
Radar	CONNECTED
Remote	UNCONNECTED
Remote Dongle	UNCONNECTED
Speed	UNCONNECTED
Temperature	UNCONNECTED

**Review System Connections:** If a connected accessory is shown as unconnected, confirm the cable or network connections.



**NOTE:** If the control head is on a network, see your accessory manual for more connection information.

# SETTING UP the Control Head

---

Your control head settings should be changed based on the area you are fishing, water conditions, bottom, and weather conditions. It is also important to set up system alarms. Some of the menus in this section are provided in the Quick Setup Menu the first time you power on the unit.

## ▶ **Set the Menu System to Normal or Advanced**

**Main Menu > Setup tab > User Mode**

- Select **Normal** to see greater simplicity and fewer menu choices.
- Select **Advanced** to see all the menus available in the menu system.

## ▶ **Set the Language**

**Main Menu > Setup tab > Language**

The available languages are determined by your control head model.



**WARNING!** Do NOT enable Asian Mode if you do not require Asian languages. Before you select Asian Mode, contact Humminbird Technical Support for important information.

## ▶ **Set the Maximum Depth**

**Main Menu (Advanced) > Sonar tab > Max Depth**

Set the maximum depth of the body of water.

- Select **Auto** for the control head to acquire bottom readings as needed (within the capabilities of the unit).
- Select **the body of water depth** so the control head will not attempt to acquire sonar data below that depth, allowing more detail to be shown on the screen.



**NOTE:** Side Imaging units default to the Side Imaging range setting if the SI Range is set deeper than Max Depth. (Side Imaging X-Press Menu > SI Range)

## ▶ **Select the Water Type**

**Main Menu (Advanced) > Sonar tab > Water Type**

Water Type configures your unit for operation in fresh or salt water. In salt water, you can also choose the shallow or deep setting. Water Type affects the accuracy of deep water depth readings.

- **If the depth is more than 330 ft (100 m), select Salt (deep).**



## ▶ **Select an Accessory Transducer (optional)**

**Main Menu > Sonar tab > Connected Transducer**

The control head will automatically select the transducer that was included with your control head. If a compatible accessory transducer is connected to the control head, select it from the Connected Transducer menu, so the related menus and views are added to the system.

## ▶ **Select the Units of Measurement**

**Main Menu > Setup tab > Units - Depth, Units - Distance, etc.**  
(G3/G3N and older models)

**Main Menu > Data Sources tab > Units > Depth, Distance, etc.**  
(G4N models)

Select the units of measurement format for your control head.

## ▶ **Turn On/Off Sounds**

**Main Menu > Setup tab > Sound Control**

If you are using alarms, but don't want key sounds, it is important to select Alarms Only to receive an audio alert when an alarm is triggered.

## ▶ **Adjust the Backlight and Background**

**Press the POWER/LIGHT key during operation.**

- **Adjust the Backlight:** Select Light.
- **Change the Background:** Select Background.

## ▶ **Pair a Phone with the Control Head**

If you have a *Bluetooth*-supported control head, you can pair a phone with it using *Bluetooth* wireless technology.

- 1** Select the Main Menu > Accessories tab.
- 2** Select Phone Bluetooth > Connect New Phone. Press the RIGHT Cursor key.

Follow the on-screen prompts to start the pairing process.

- 3** When the phone name displays in the menu, select it. Press the RIGHT Cursor key.

- 4** When prompted, tap Pair on your phone.

In your phone Settings menu, turn on Show Notifications.

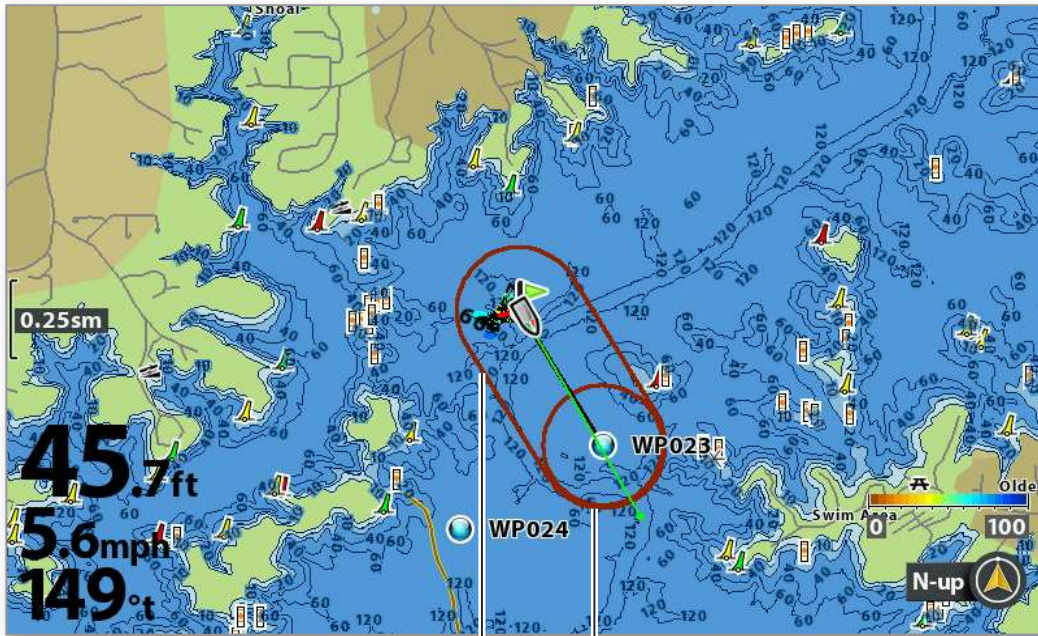
## ▶ Set Alarms

### Main Menu > Alarms tab

Sonar and Navigation alarms are described briefly here. See your control head operations manual for more details about the variety of alarm options.

**When an alarm is turned on**, an alert will sound or display on the control head to indicate the threshold (setting) has been exceeded. **When an alarm is triggered**, you can silence it by pressing any key on the control head.

### Chart View Displaying Off Course Limits and Arrival Circle



#### Off Course Limits

If the boat travels beyond the set threshold, the alarm will be triggered.

#### Arrival Circle

When the boat reaches the arrival circle, the alarm will be triggered.

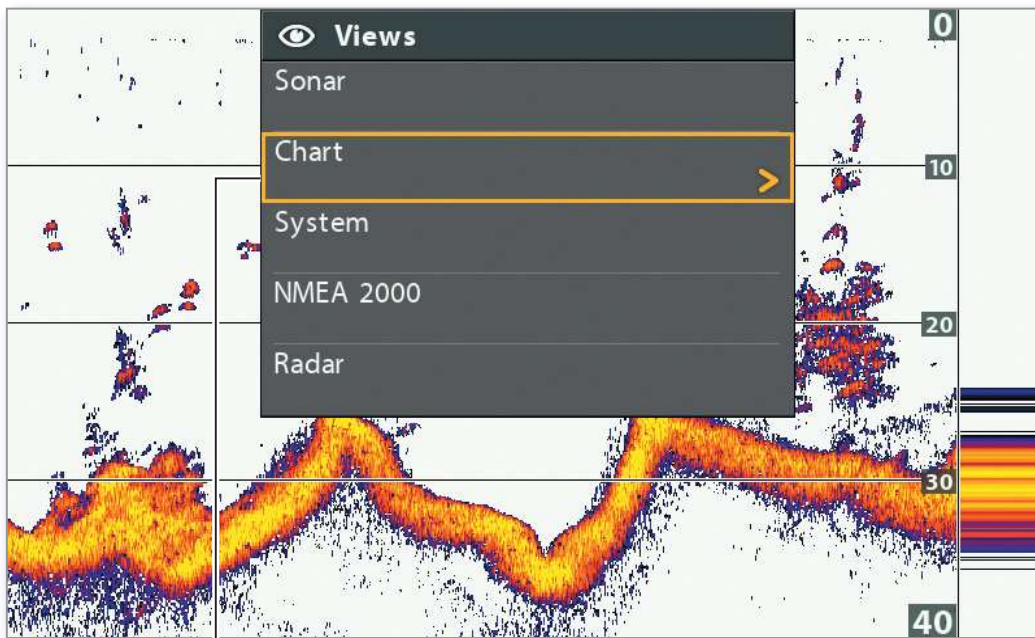
- **Depth Alarm** is triggered when the depth becomes equal to or less than the menu setting.
- **Low Battery Alarm** is triggered when the input battery voltage is equal to or less than the menu setting. The battery must be connected to the unit.
- **Off Course Alarm** sets how far the boat can move off course during navigation before an alarm will be triggered.
- **Arrival Alarm** sets how close the boat must be to the destination waypoint before the alarm will be triggered.
- **Drift Alarm** sets how far the boat can move from its anchored position outside the drift alarm perimeter before an alarm will be triggered.

# VIEW ROTATION Overview

## ► Change the On-Screen View

Use the Views X-Press Menu to quickly display a view.

Views X-Press Menu



Select a view category, then select the view you want to display.



OR



Press and Hold to Open  
the Views X-Press Menu

Next View:  
Press Once

Previous View:  
Press Once

## ► Save View Shortcuts

You can program the VIEW SHORTCUT keys to display a saved view immediately. You can save one view on each key.

**SAVE: Press and Hold**

- 1 With the view you want to save displayed on-screen, press and hold a VIEW SHORTCUT key for several seconds.



## ▶ Use Combo Views

**X-Press Menu > Active Pane**

**X-Press Menu > Split Position**

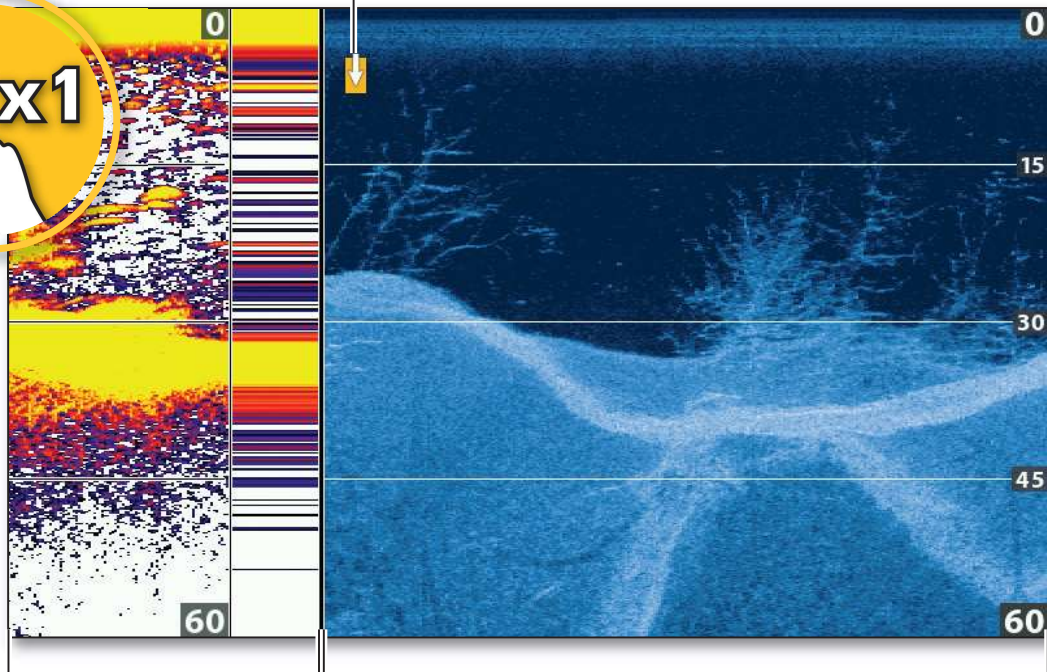
Combo Views display two views (or more) on the screen at the same time. To change the settings, select menus or actions, or change the size of either view, you must select the view as the Active Pane from the X-Press menu.

### Sonar/Down Imaging Combo View

**Open the  
X-Press Menu**



↓ indicates the selected pane (Active Pane)



**Split Position**  
adjusts pane size

**Split Position**  
adjusts pane size

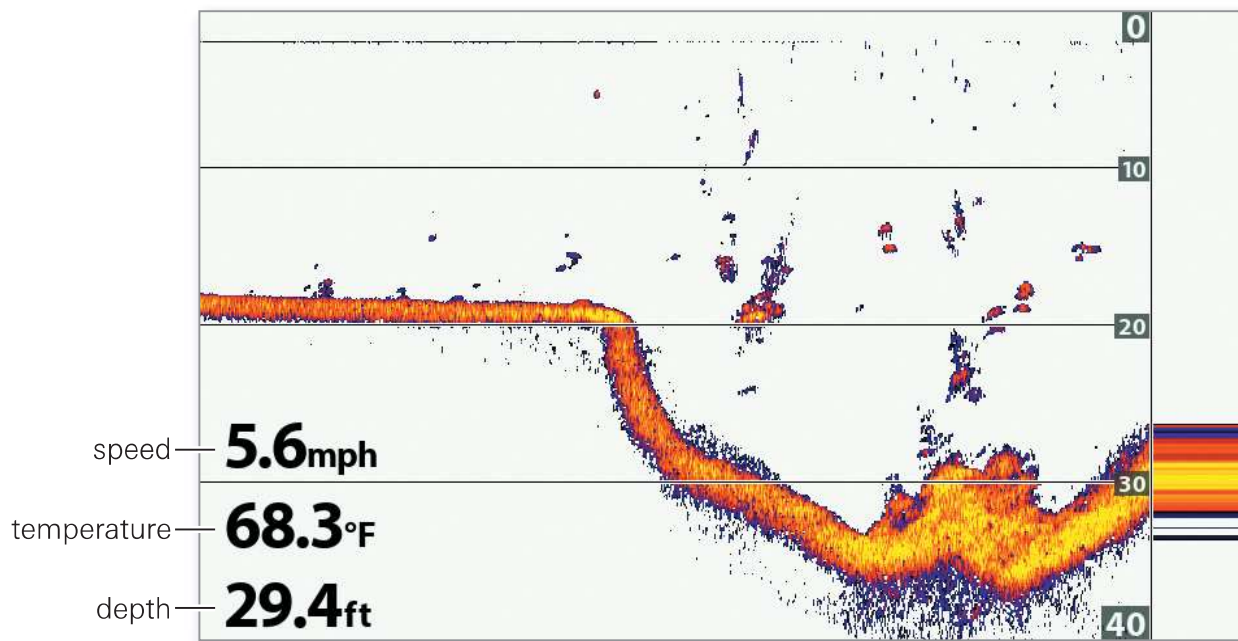
## ► Display Digital Readouts

### Main Menu (Advanced) > Setup tab > Digital Readouts

Digital Readout data can be displayed on-screen as an overlay or in data boxes. The format and readouts you choose will be applied to all views.

- Select **Overlay** to display preset digital readouts as an overlay on the view.
- Select **Boxes** to display digital readouts in boxes on the view. You can select the readouts to be displayed in each box (see *Select Digital Readouts*).
- Select **Off** to hide the digital readouts.

Sonar View with Digital Readouts Set to Overlay



## ▶ Select Digital Readouts

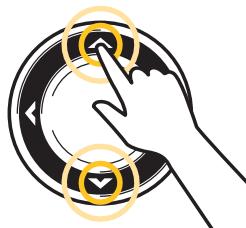
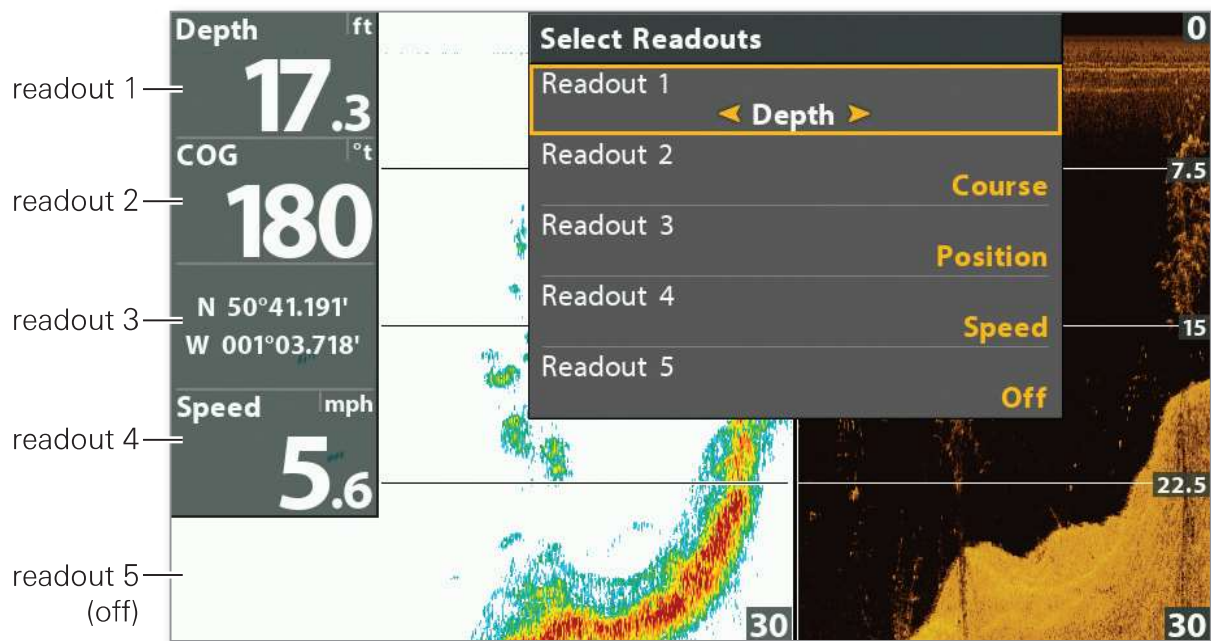
**Main Menu (Advanced) > Setup tab > Select Readouts OR Edit Data Boxes**

**Main Menu (Advanced) > Setup tab > Select Nav Readouts OR Edit Navigation Data Boxes**

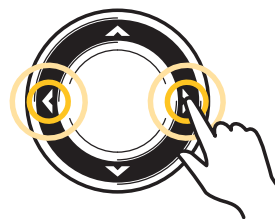
If you have Digital Readouts set to Boxes, you can select the data that will be displayed in each box.

- Use the **Select Readouts** (G3/G3N and older models) or **Edit Data Boxes** (G4N models) menu to set your standard digital readouts.
- Use the **Select Nav Readouts** (G3/G3N and older models) or **Edit Navigation Data Boxes** (G4N models) menu to set the digital readouts that will be displayed during navigation.

### Select Readouts Menu



Select a Readout Position



Select a Readout

## **Understand the Digital Readouts**

See below for examples of digital readouts available in the Select Readouts and Select Nav Readouts menus. The available digital readouts are determined by the installed equipment and the selected sources on the network.

---

<b>Bearing</b>	The direction to a destination waypoint measured in degrees from north.
<b>COG</b>	<b>Course Over Ground</b> is the direction the boat is traveling measured in degrees from North. When the COG is equal to Bearing, the boat is said to be on course and will arrive at the destination in the most efficient manner.
<b>Depth</b>	The depth of the water from the transducer or digital depth sensor to the bottom. This measurement includes the depth offset setting.
<b>DMG</b>	<b>Distance Made Good</b> is the straight line distance actually traveled between the start position to the current boat position.
<b>DTG</b>	<b>Distance To Go</b> is the distance between the boat position and the next waypoint on the route.
<b>ETA</b>	<b>Estimated Time of Arrival</b> to the next waypoint on the route.
<b>Position</b>	The latitude and longitude coordinates of the boat position based on the GPS receiver installation location.
<b>Speed</b>	The measurement of the boat's progress across a given distance based on the speed measurement provided by the GPS.
<b>Temp</b>	The detected water temperature by the transducer's internal temperature probe or an accessory temperature sensor.
<b>Timer</b>	The digital readout for the timer set in the Alarms tab. See your control head operations manual for details.
<b>Triplog</b>	The elapsed time since the triplog was last reset, the distance traveled since last reset, and the average speed during timed interval.
<b>TTG</b>	<b>Time To Go</b> is the estimated time required to reach the next waypoint on the route.
<b>Voltage</b>	Power supplied to the control head.
<b>Water Speed</b>	The speed of water as it flows past the boat (optional-purchase speed wheel required).
<b>XTE</b>	<b>Cross Track Error</b> is the straight-line distance of the boat from the intended route. XTE measures how far the boat is off course.

---

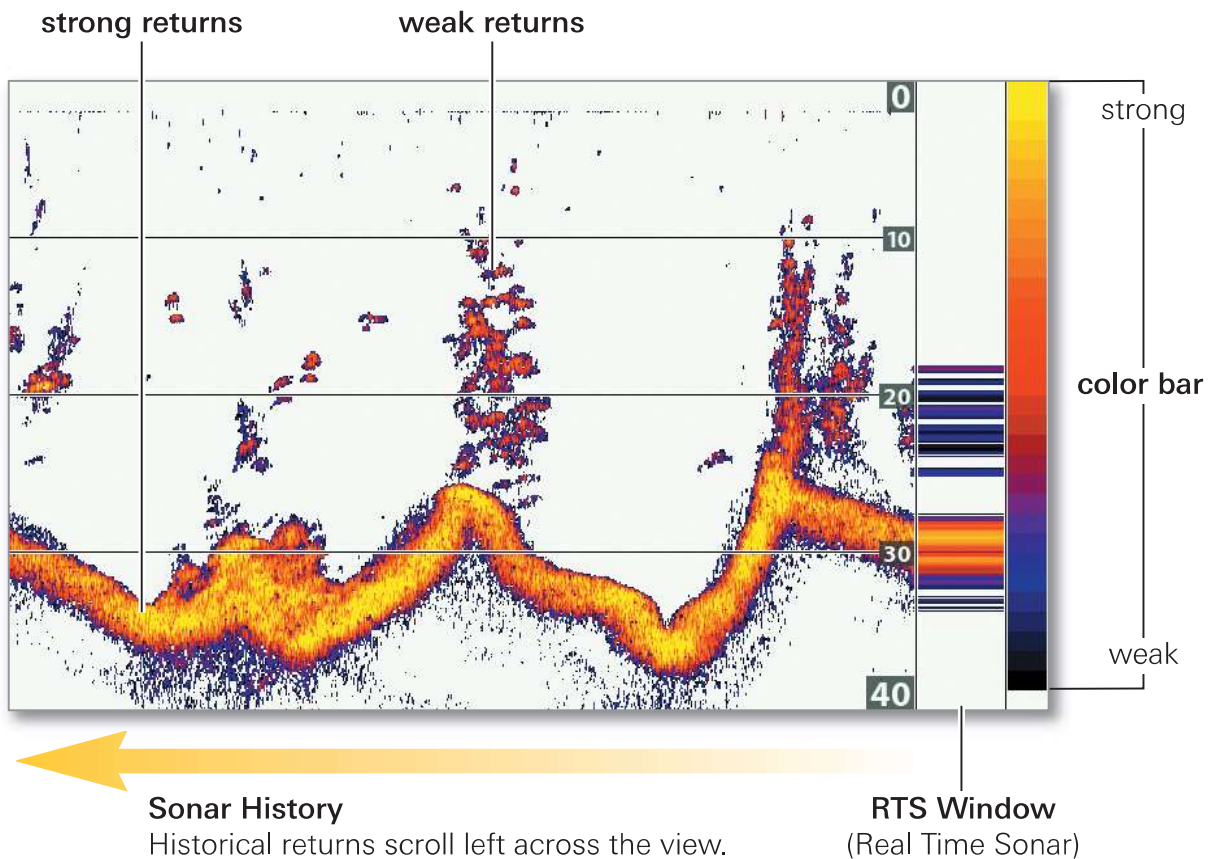
# SONAR

## Interpretation and Display Settings

You can use the settings included with your control head, or you can customize the Sonar display.

The Sonar View displays the return intensity based on the Sonar Colors and Bottom View menu settings. You can also choose to turn on/off fish symbols (Fish ID+™), change the 2D SwitchFire® mode, adjust sensitivity, and more.

### Sonar View: Sonar Colors Palette 1



- **Weak Returns** could be vegetation or small fish.
- **Strong Returns** could be compacted sediment, rocks, tree limbs, or other structure.

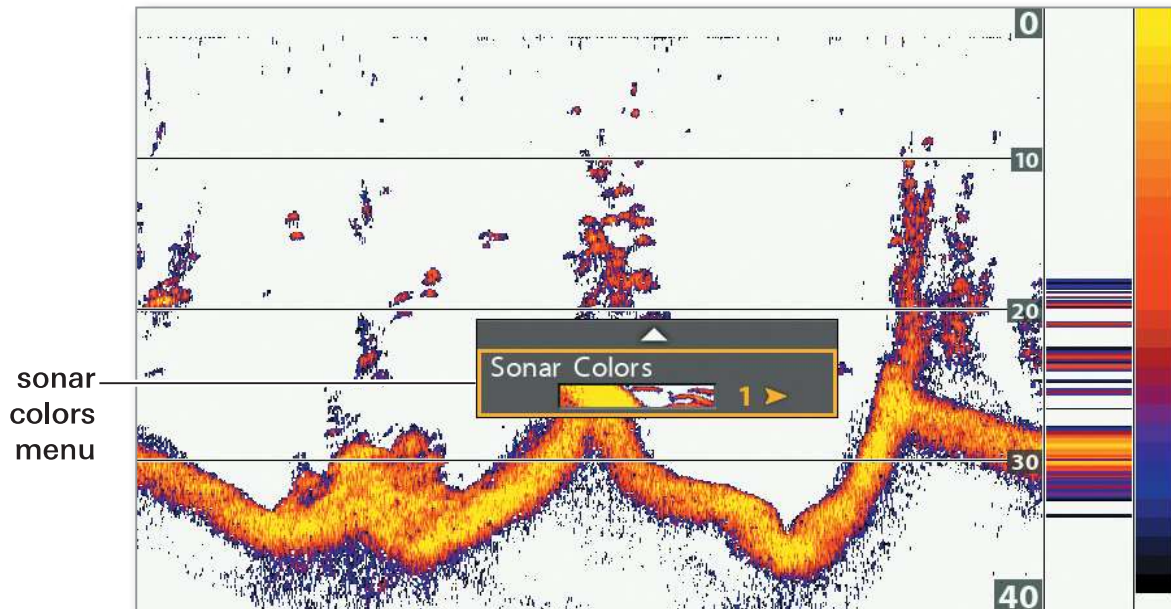


## ► Change the Color Palette

### Sonar X-Press Menu > Sonar Colors

The palette you choose will be applied to the Sonar View, Sonar Zoom View, Split Sonar View, and Sonar Combo Views.

#### Changing the Color Palette in Sonar View

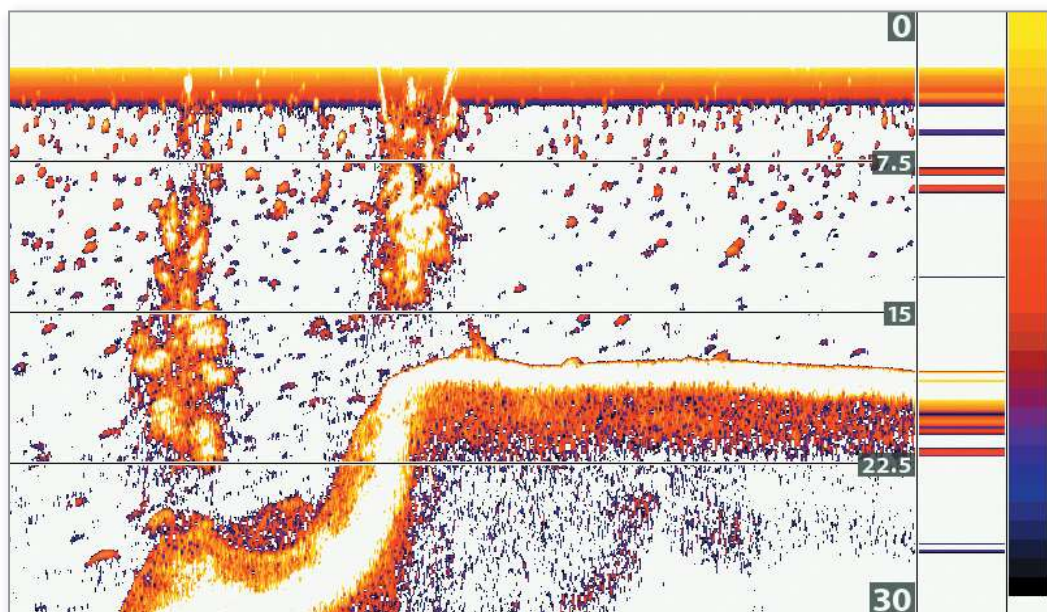


## ► Select the Bottom View Display

### Main Menu > Sonar tab > Bottom View

Select the method used to represent bottom and structure on the display.

#### Sonar View with Bottom View Set to WhiteLine



- **WhiteLine** highlights the strongest sonar returns in white.
- **Structure ID** represents the strongest returns as specified by the selected color palette.

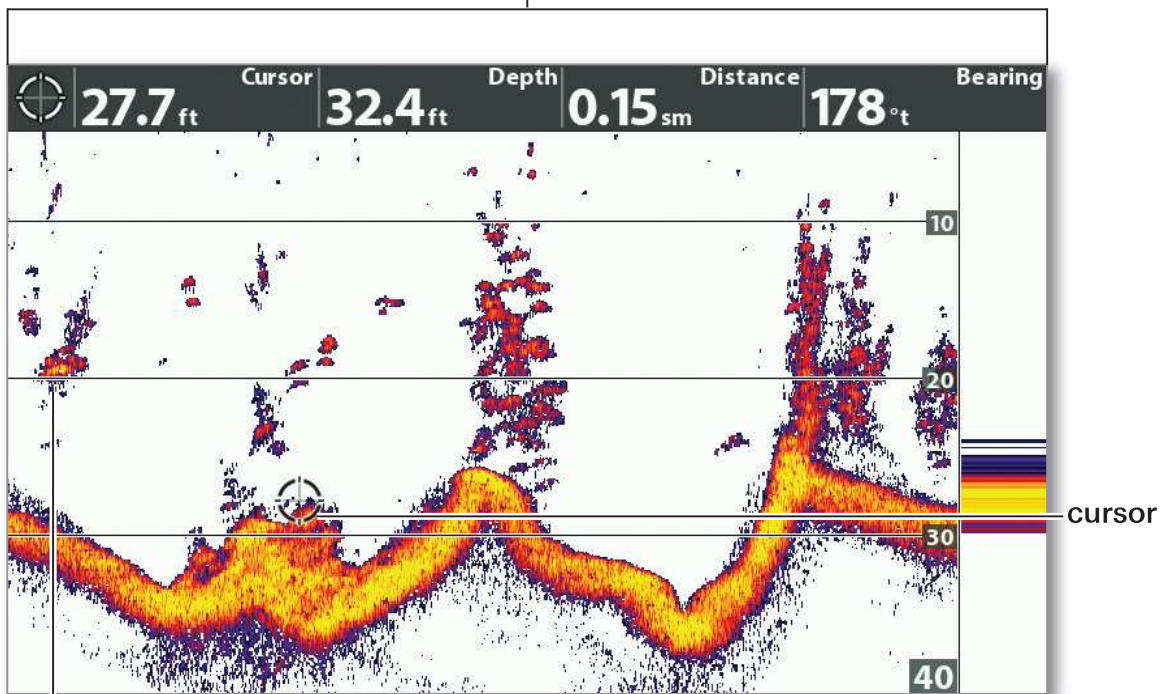
# SONAR on the Go ▶▶▶

## ▶ Adjust Display Settings and Freeze the Display

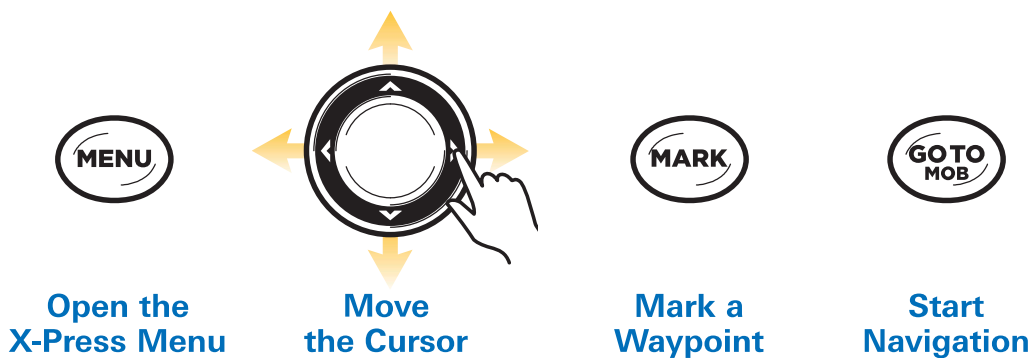
Use the Sonar X-Press Menu to see more detail on the view or filter the information you don't want to see. Move the cursor to freeze the display, review sonar history, and mark waypoints (GPS fix required).

Sonar View with Active Cursor

cursor digital readouts



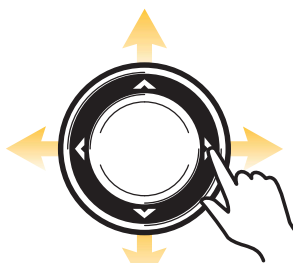
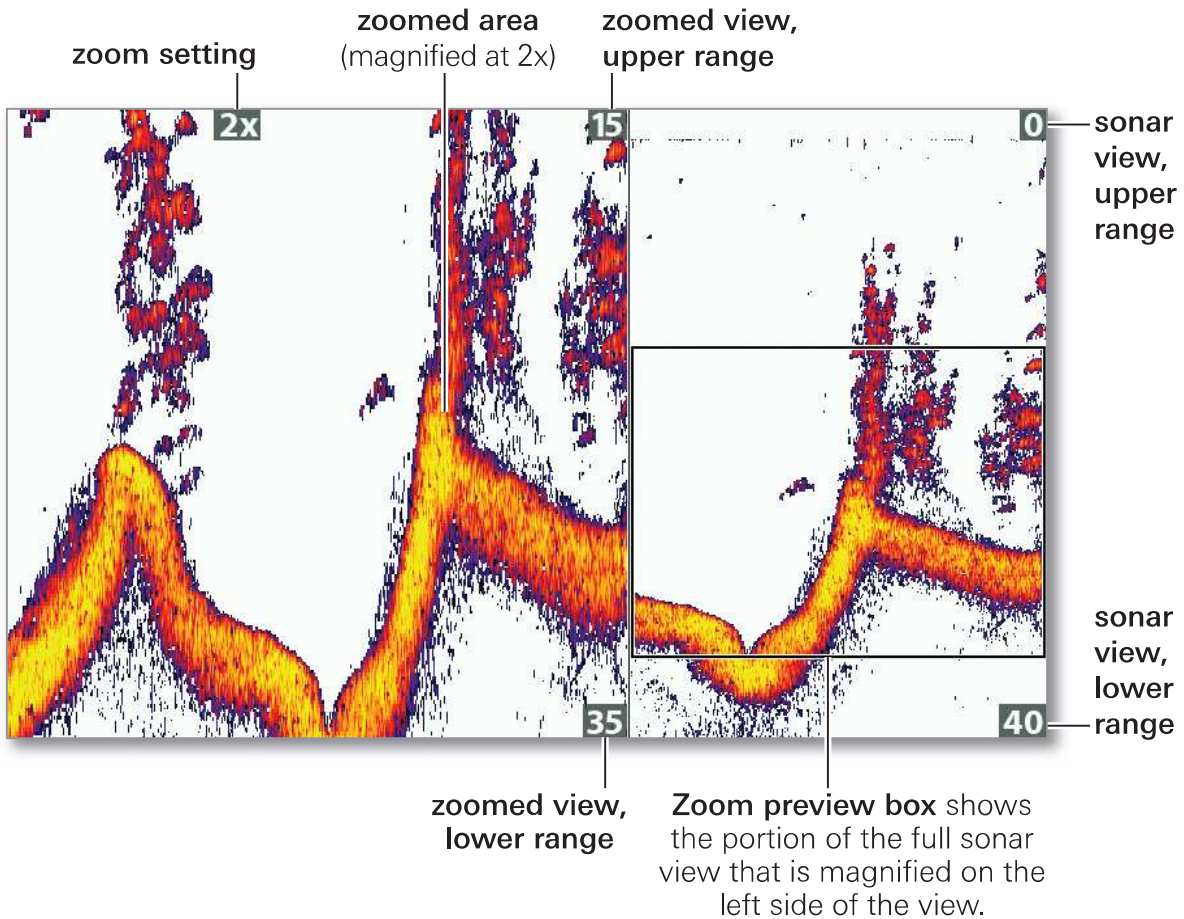
Sensitivity on the Sonar X-Press Menu can be adjusted to display more or less sonar returns on the screen.



## ► Magnify Bottom Sonar Returns

Sonar Zoom View provides a magnified view of the bottom and structure. If the control head has GPS reception, you can also mark waypoints and start navigation.

### Using the Sonar Zoom View



Move  
the Cursor



Zoom In



Zoom Out



Mark a  
Waypoint



Start  
Navigation



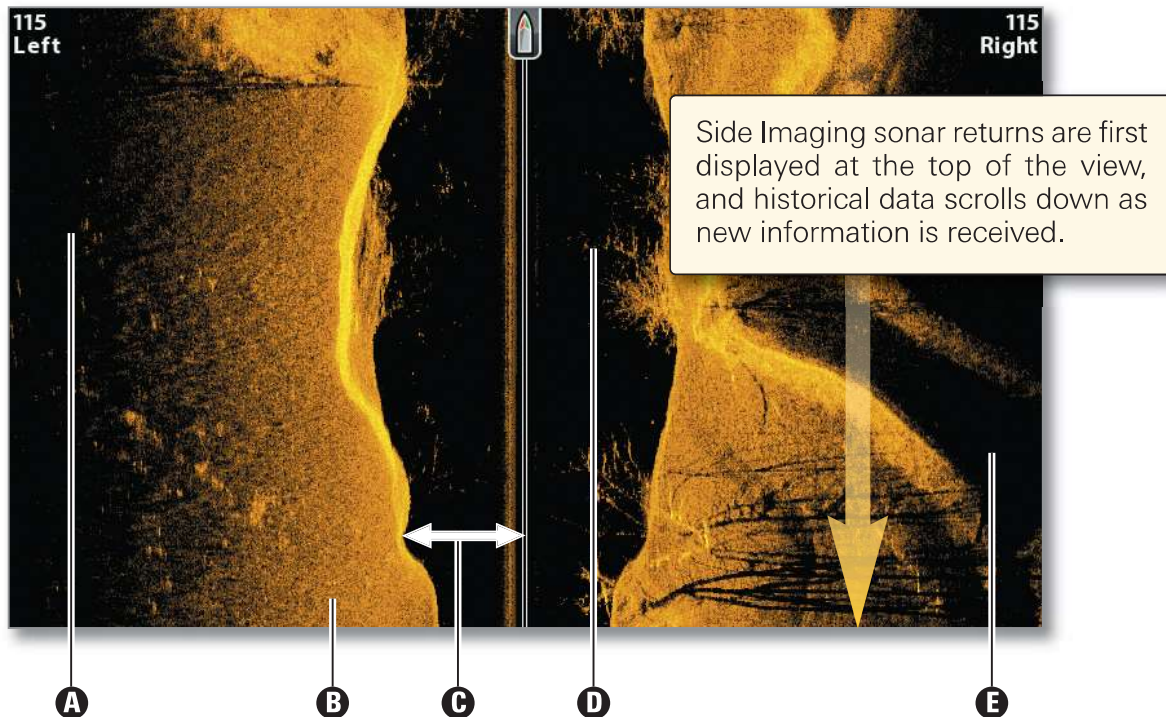
**NOTE:** If your unit does not have ZOOM keys, open the Sonar X-Press Menu (Advanced) > Zoom Level to adjust the magnification.

# SIDE IMAGING

## Interpreting the Display

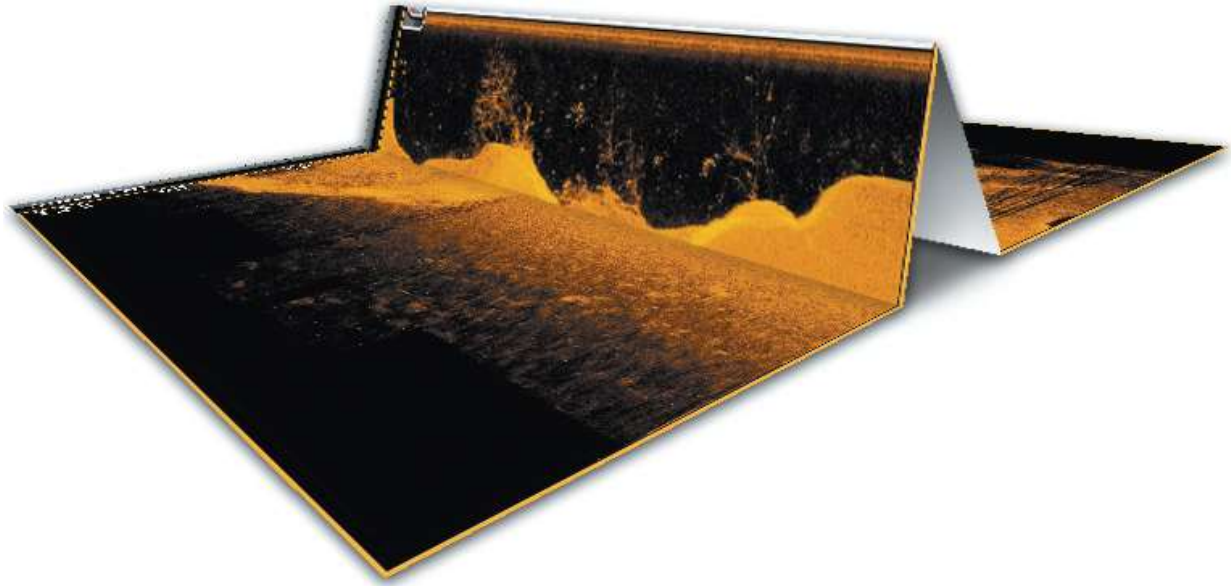
Side Imaging beams “illuminate” the bottom contour, structure, and fish. The side beam coverage is very thin from front to back, yet very wide from top to bottom. The bottom composition determines the intensity of the sonar return, and upward slopes that face the transducer reflect sonar better than downward slopes that face away from the transducer.

### Interpreting the Side Imaging View



- A Shadows:** The longer the shadow, the taller the object. Fish also cast shadows, and their distance from the bottom can be interpreted by their shadow.
- B Light Shades** represent denser terrain (possibly compacted sediment, timber, rocks) or rising terrain.
- C Water Column** shows the relative depth of the water under the boat at any given time. Variations in the width of the water column show variations in the distance to the bottom as the boat passes over. See the illustrations *Interpreting the Side Imaging View*.
- D White Streaks or Clouds** may represent fish on the display.
- E Dark Shades** represent soft returns (possibly sand or mud) or descending terrain.

## Interpreting the Side Imaging View



To visualize how Side Imaging works, the Side Imaging View illustration can be folded down the middle and then folded again at the lowest point of the water column. The raised area reveals the water column with its relative depth of the water under the boat. In the Side Imaging View, variations in the width of the water column show variations in the distance to the bottom as the boat passes over.

### **For Best Side Imaging Performance**

- Boat speed: 2 to 6 mph
- Straight line navigation
- Minimum turning time and wave turbulence

See your control head operations manual for more information about the Side Imaging beams and how to interpret the Side Imaging display.

# SIDE IMAGING Display Settings

You can use the default settings included with your control head, or you can customize the Side Imaging display.

## ► Change the Color Palette

[Side Imaging X-Press Menu > SI Colors](#)

Select the color palette to use for the Side Imaging Views.

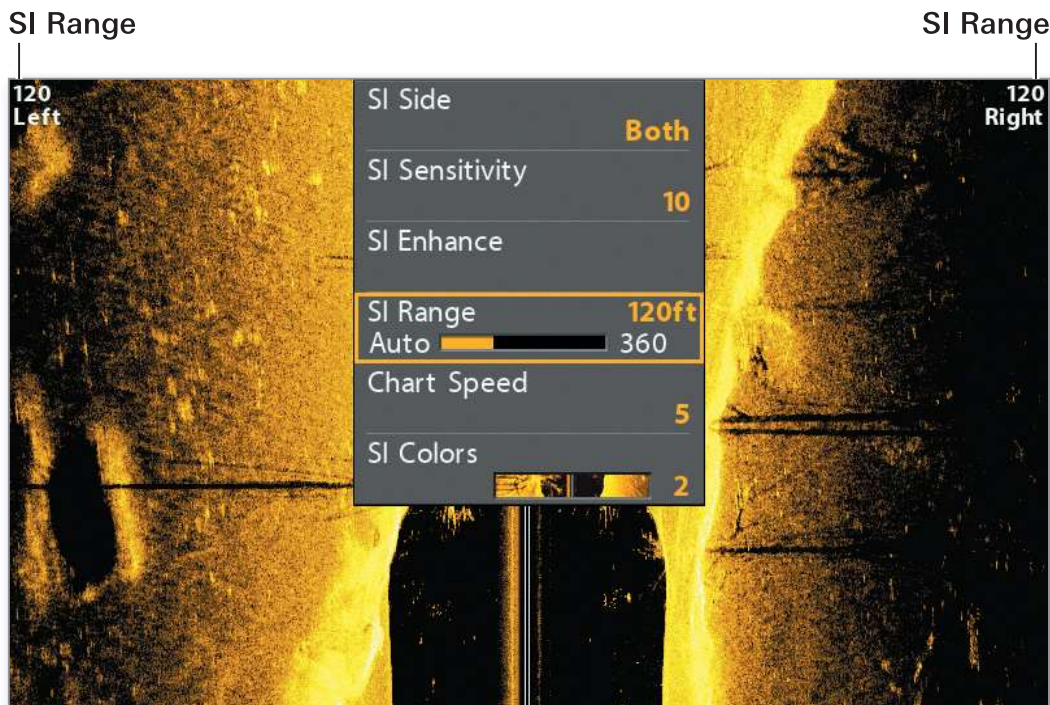
## ► Adjust the Side Imaging Range

[Side Imaging X-Press Menu > SI Range](#)

SI Range sets the deepest range that will be displayed by the Side Imaging View.

- **Auto:** The range will automatically adjust to follow the bottom.
- **Manual:** Select a low range setting to focus on a shorter distance of the water column and show greater detail on the screen. Select a higher range setting to view farther into the water and see an overview of details on the screen.

Adjusting the SI Range

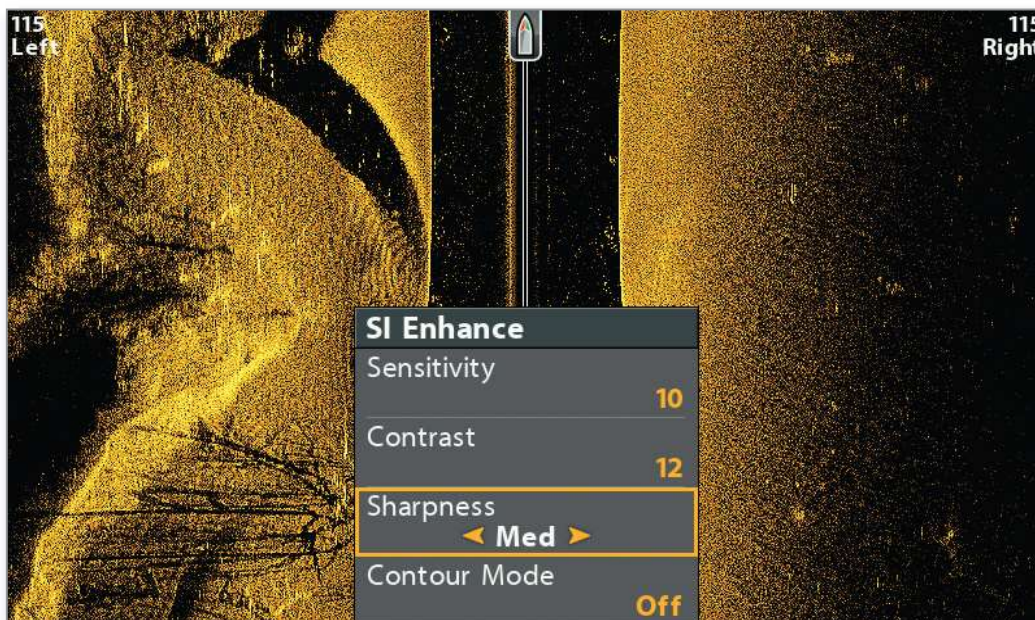


## ▶ Enhance the Side Imaging View

### Side Imaging X-Press Menu > SI Enhance

The SI Enhance dialog box allows you to adjust your Side Imaging View in four categories: Sensitivity, Contrast, Sharpness, and Contour Mode.

#### SI Enhance Menu

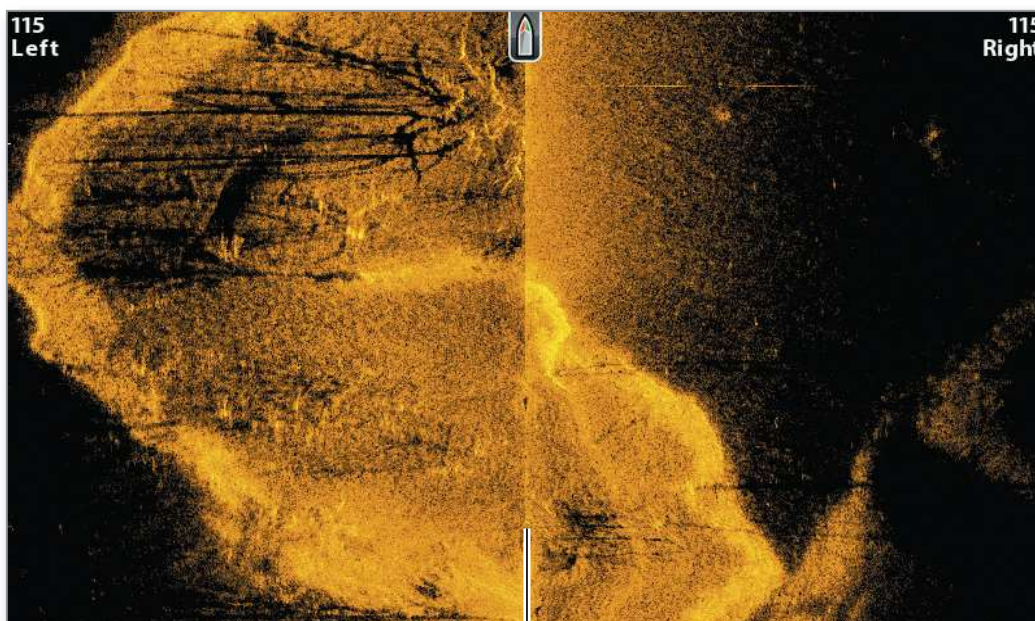


## ▶ Display or Hide the Water Column

### Side Imaging X-Press Menu > SI Enhance > Contour Mode

Contour Mode controls how the water column is displayed in the Side Imaging View. The location of a target on the view is influenced by the Contour Mode setting.

#### Side Imaging View with Contour Mode On



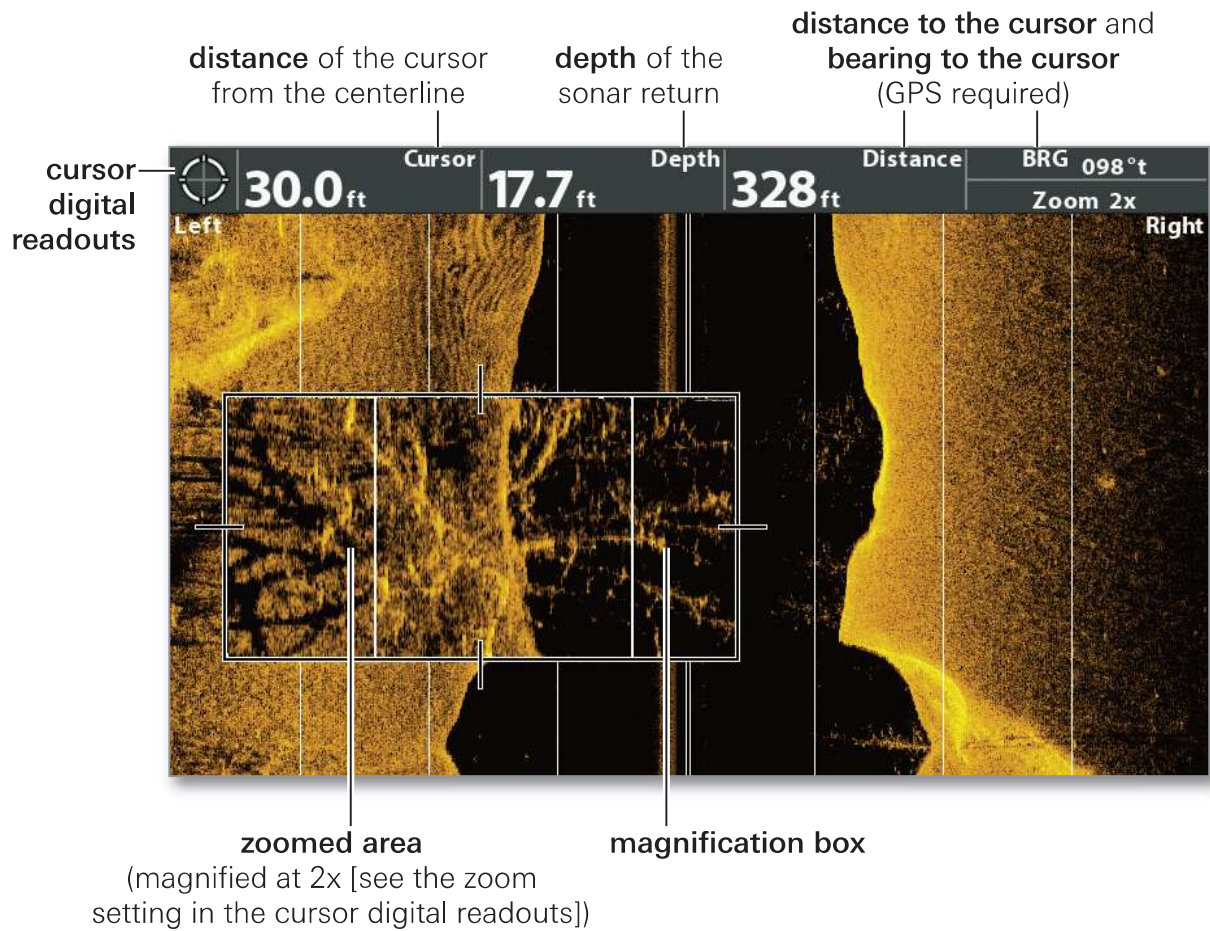
The water column is removed.

# SIDE IMAGING on the Go ▶▶▶

## ▶ Freeze the Display and Magnify Selected Returns

Use the Cursor Control key to activate the cursor, freeze the display, and move the cursor over a sonar return.

### Using ZOOM on the Side Imaging View



The diagram shows five control buttons arranged horizontally. From left to right: 1. A circular button with a hand icon pointing to a central point and four arrows pointing outwards, labeled 'Activate the Cursor & Freeze the Display'. 2. A circular button with a plus sign (+), labeled 'Zoom In'. 3. A circular button with a minus sign (-), labeled 'Zoom Out'. 4. A circular button with the word 'MARK' inside, labeled 'Mark a Waypoint'. 5. A circular button with the words 'GOTO MOB' inside, labeled 'Start Navigation'.

Activate the Cursor & Freeze the Display

Zoom In

Zoom Out

Mark a Waypoint

Start Navigation




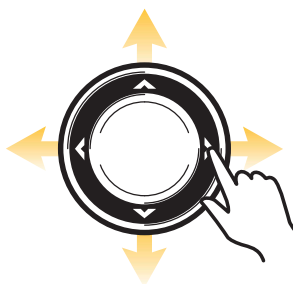
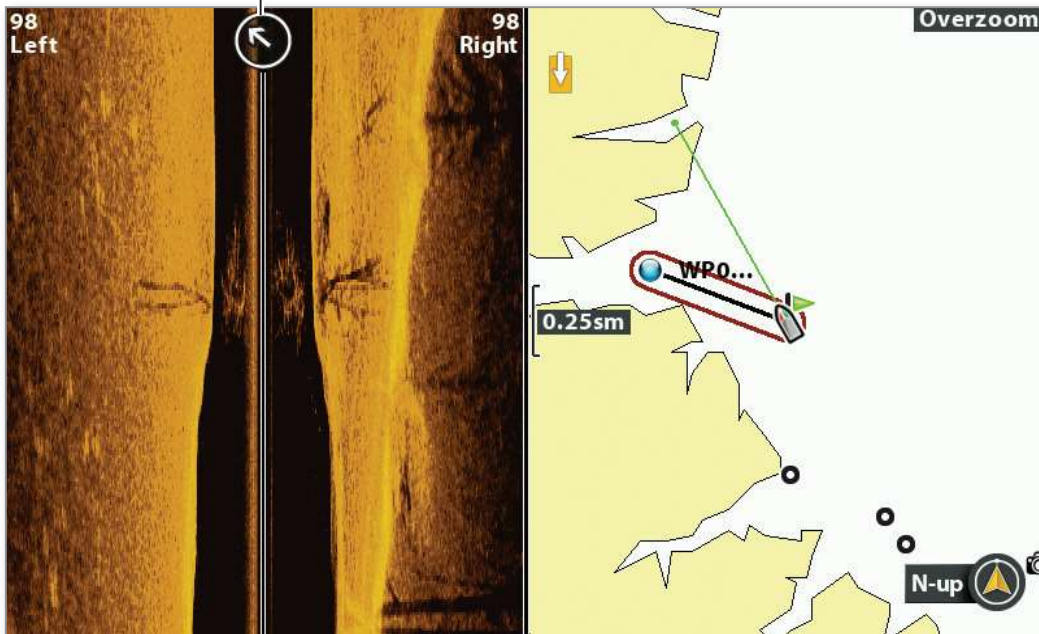
## ▶ Turn On SI Navigation

Main Menu > Nav tab > SI Navigation

SI Navigation controls how the boat icon is displayed in Side Imaging Views. **If SI Navigation is turned on**, an arrow icon indicates the direction the boat needs to turn to reach the next waypoint during navigation. **If SI Navigation is turned off**, the boat icon will not change during navigation.

### Chart/Side Imaging Combo View with SI Navigation On (with built-in Contour XD)

 The **arrow** will point the direction that you need to steer your boat in order to reach the waypoint.



Move  
the Cursor



Zoom In



Zoom Out



Mark a  
Waypoint



Start  
Navigation

# DOWN IMAGING

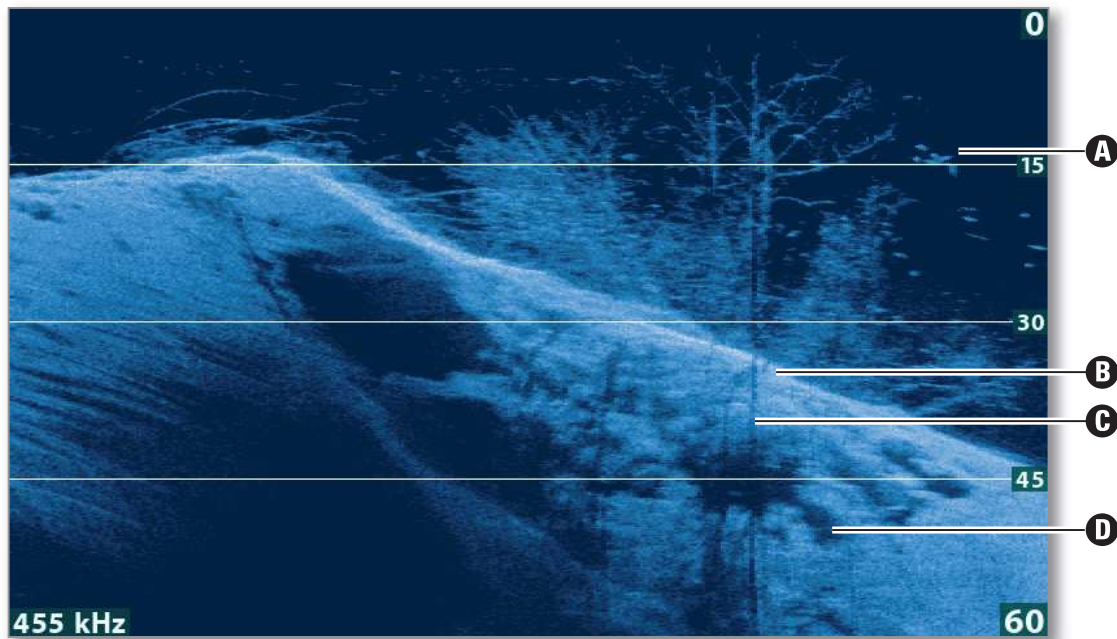
## Interpreting the Display

---

Down Imaging beams “illuminate” the bottom contour, structure, and fish. The razor-thin, high-definition profiling beams produce the detailed sonar data that you see on the display.

Use the light and dark parts of the display to interpret the objects under your boat as follows:

### Interpreting the Down Imaging View



#### Sonar History

Historical returns scroll left across the view.

- A** **White Streaks or Clouds** may represent fish on the display.
- B** **Light Shades** represent denser terrain (possibly compacted sediment, timber, rocks) or rising terrain.
- C** **Shadow**
- D** **Dark Shades** represent soft returns (possibly sand or mud) or descending terrain.

# DOWN IMAGING Display Settings

## ► Change the Color Palette

[Down Imaging X-Press Menu > DI Colors](#)

Select the color palette to use for all Down Imaging Views.

## ► Display or Hide Depth Lines

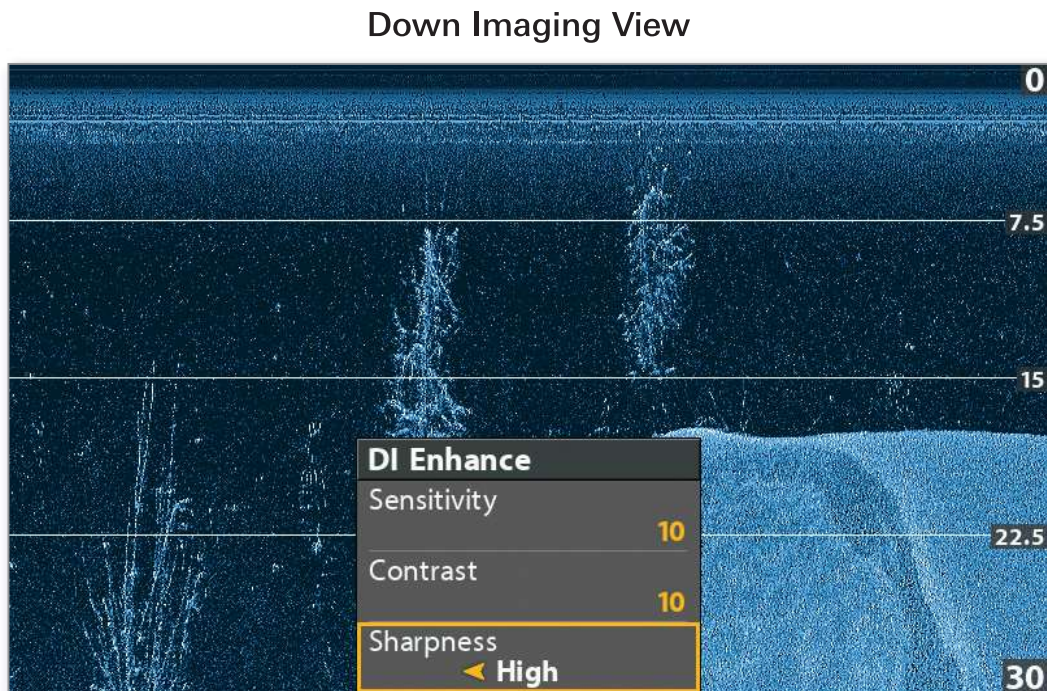
[Main Menu \(Advanced\) > Sonar tab > Depth Lines](#)

Turn Depth Lines On to display the incremental marks between the upper and lower depth range. Turning Depth Lines On will also affect the Sonar Views.

## ► Enhance the Down Imaging View

[Down Imaging X-Press Menu > DI Enhance](#)

The DI Enhance dialog box allows you to adjust your Down Imaging View in three categories: Sensitivity, Contrast, and Sharpness.



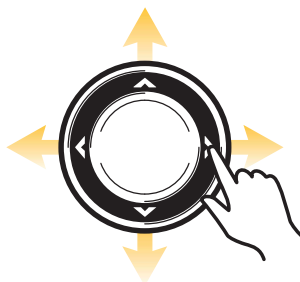
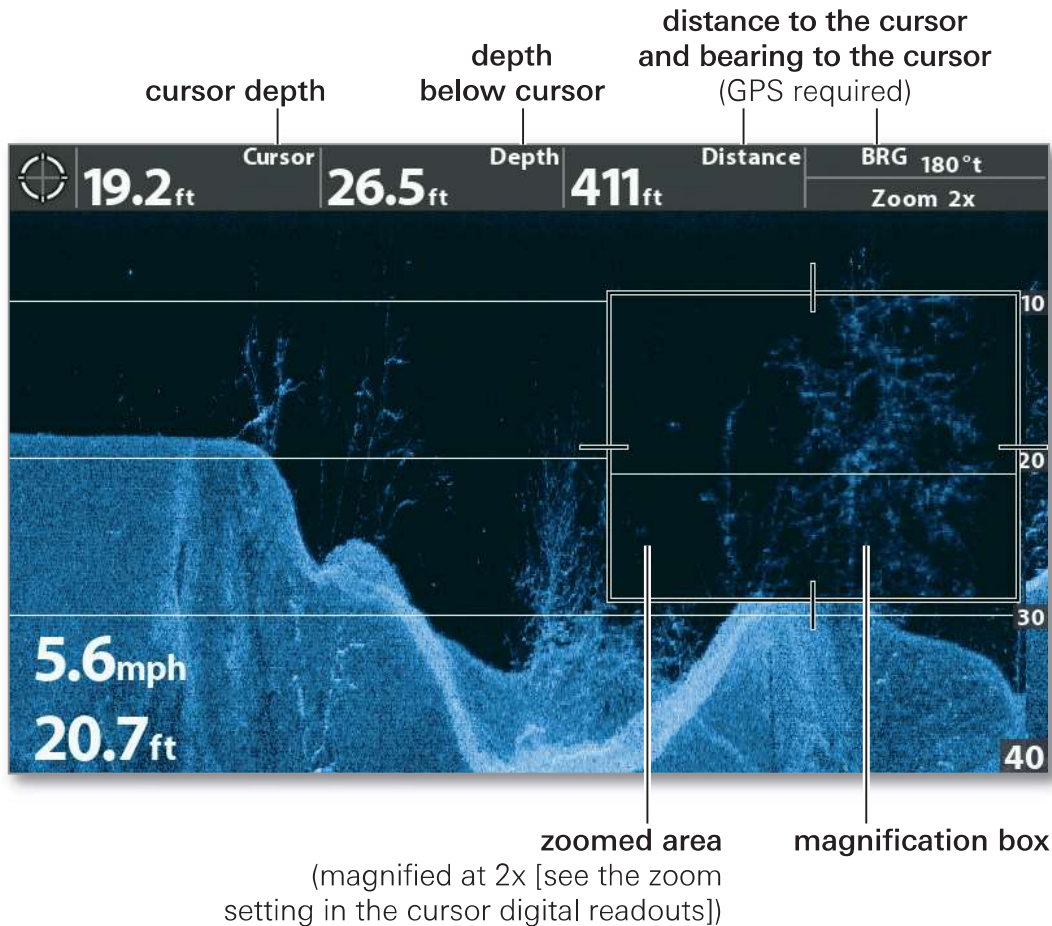
The Sharpness setting makes the sonar returns appear more defined.

# DOWN IMAGING on the Go ▶▶▶

## ▶ Freeze the Display and Magnify Selected Returns

Use the Cursor Control key to activate the cursor, freeze the display, and move the cursor over a sonar return.

### Using ZOOM on the Down Imaging View



**Activate the Cursor & Freeze the Display**



**Zoom In**



**Zoom Out**



**Mark a Waypoint**



**Start Navigation**



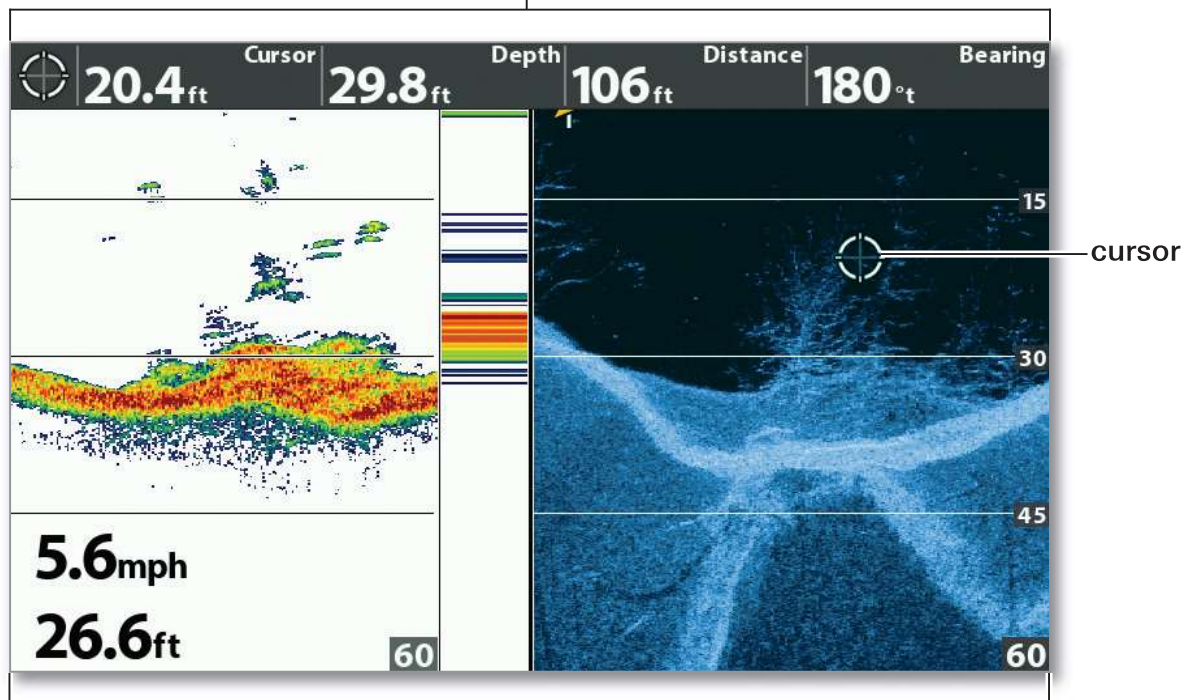
**NOTE:** If your unit does not have ZOOM keys, move the cursor, and open the Down Imaging X-Press Menu (Advanced) > DI Zoom to adjust the magnification.

## ► Use the Down Imaging Combo Views

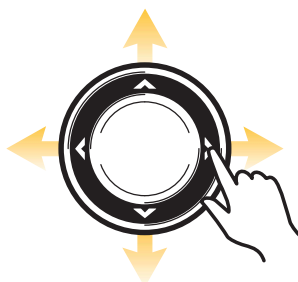
In the Down Imaging/Sonar Combo View, you can compare Down Imaging with traditional Sonar. Use the Cursor Control key to move the cursor over a sonar return, and the +ZOOM key to magnify the return.

### Sonar/Down Imaging Combo View with Active Cursor

Cursor digital readouts show the cursor's depth and related position information (GPS required).



Use the Combo View to compare sonar returns.



Activate and Move the Cursor



Zoom In



Zoom Out



Mark a Waypoint



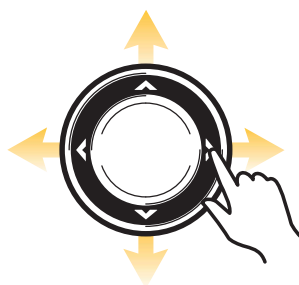
Start Navigation

# CHART Display Overview

HELIX GPS models allow you to mark waypoints, create routes, and start navigation. A GPS fix is required for all chart and navigation features.

You can also use the Waypoint Management dialog box to create new waypoints and routes from scratch, as well as manage your navigation data (see *Navigation: Waypoint Management Dialog Box*). See your control head operations manual for more information.

Chart View with Built-In Humminbird Basemap



Activate and Move the Cursor



Zoom In



Zoom Out

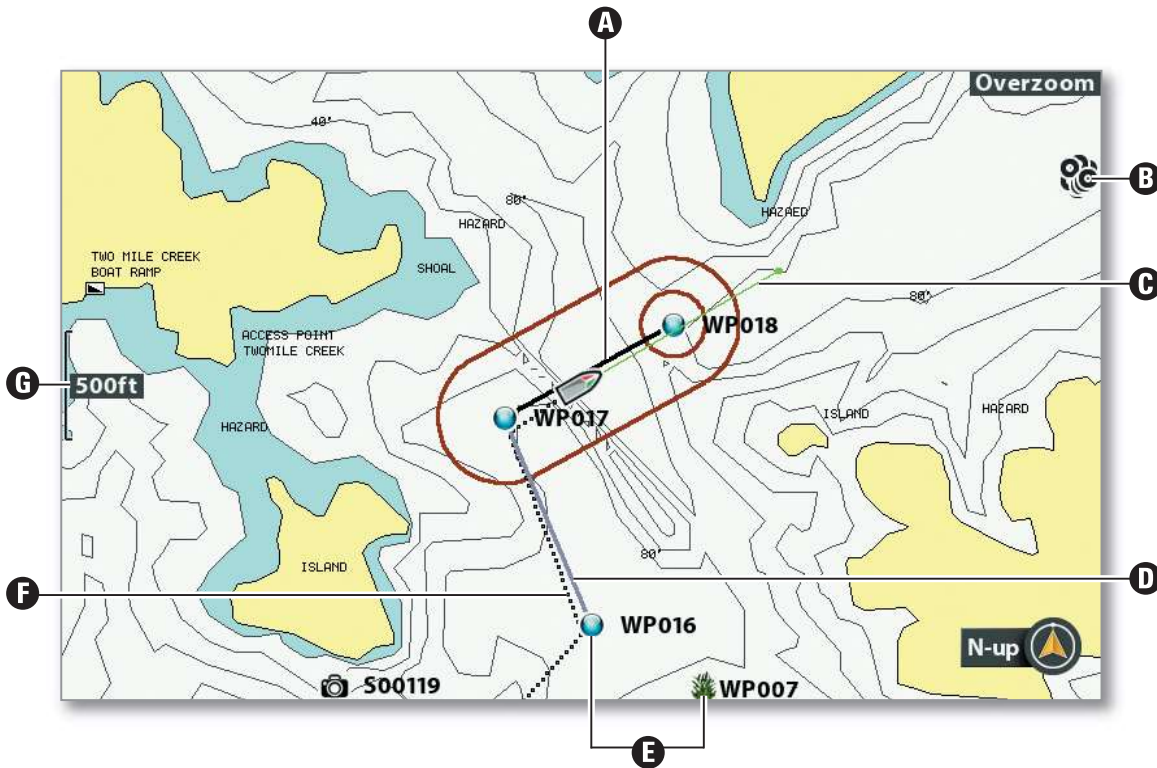


Mark a Waypoint



Start Navigation

## Navigating a Route in Chart View (with built-in Contour XD)



- A Current Route Leg (Black):** The projected path between each waypoint in a route.
- B Decluttered Waypoint Icons:** To see a Decluttered Waypoint at full size, use the Cursor Control key to move the cursor onto a decluttered waypoint icon.
- C Course Projection Line (Green):** The current direction the boat is traveling, measured in degrees from North.
- D Completed Route Leg (Light Gray):** The completed path of travel on the route.
- E Waypoint Icons:** Waypoints are saved positions that mark areas of interest or navigation points. To view more information about a waypoint, select it and press the CHECK/INFO key.
- F Track:** The Current Track shows the position history since the unit was powered up as a breadcrumb trail of trackpoints. You can clear the Current Track or save it at any time (see *Navigation: Chart on the Go*).
- G Map Scale**



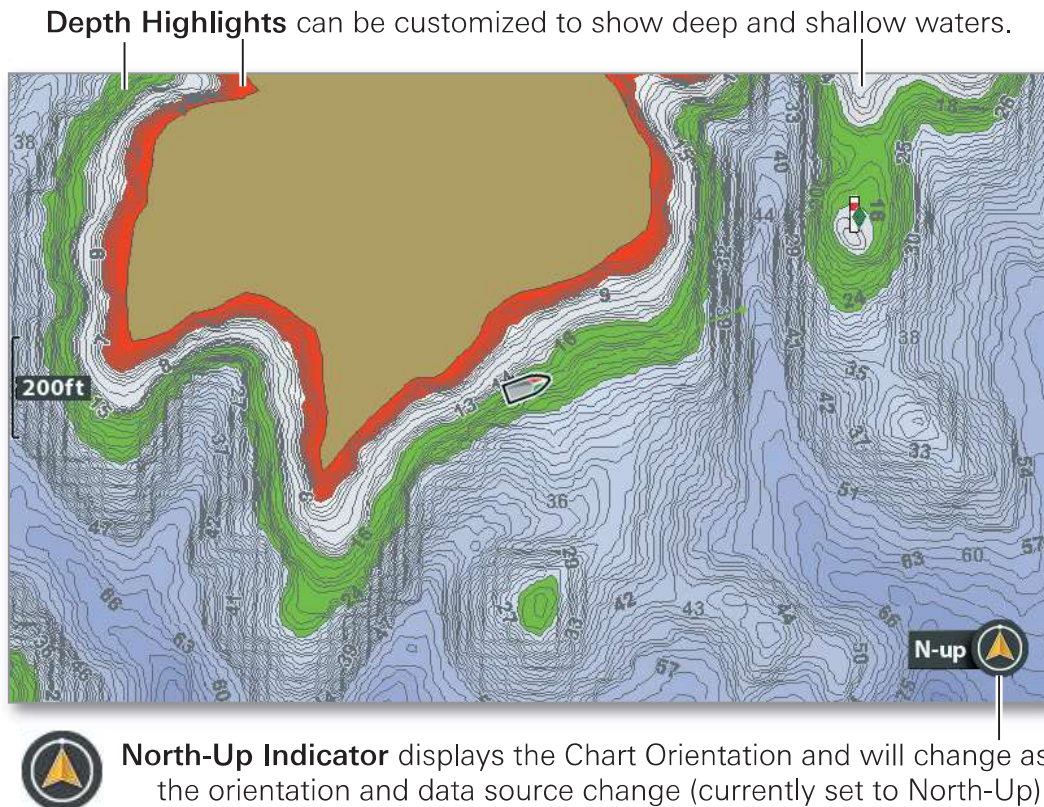
When the boat is stationary, it is drawn as a circle.



When the boat is in motion, it changes to a boat shape, pointed in the direction of motion (see *Set the Chart Orientation*).

# CHART VIEW Display Settings

## Chart View with Humminbird LakeMaster



### ▶ Add Maps to the Control Head

#### Main Menu > Chart tab > Map Source

In addition to the built-in maps, you can install a compatible Humminbird LakeMaster®, Humminbird CoastMaster™, Humminbird ChartSelect® (see [chartselect.humminbird.com](http://chartselect.humminbird.com)), or Navionics chart card for additional chart information. When you install an SD or microSD chart card in the card slot, the map source will change automatically. To change the map source manually, use the Map Source menu.

### ▶ Set the Chart Orientation

#### Main Menu > Chart tab > Chart Orientation

Chart Orientation allows you to select how the Chart Views are displayed. The North-Up Indicator works with this feature also (see the above illustration).

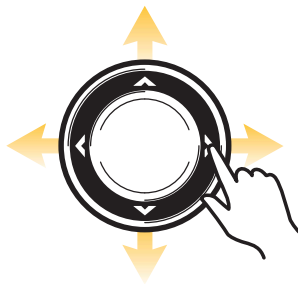
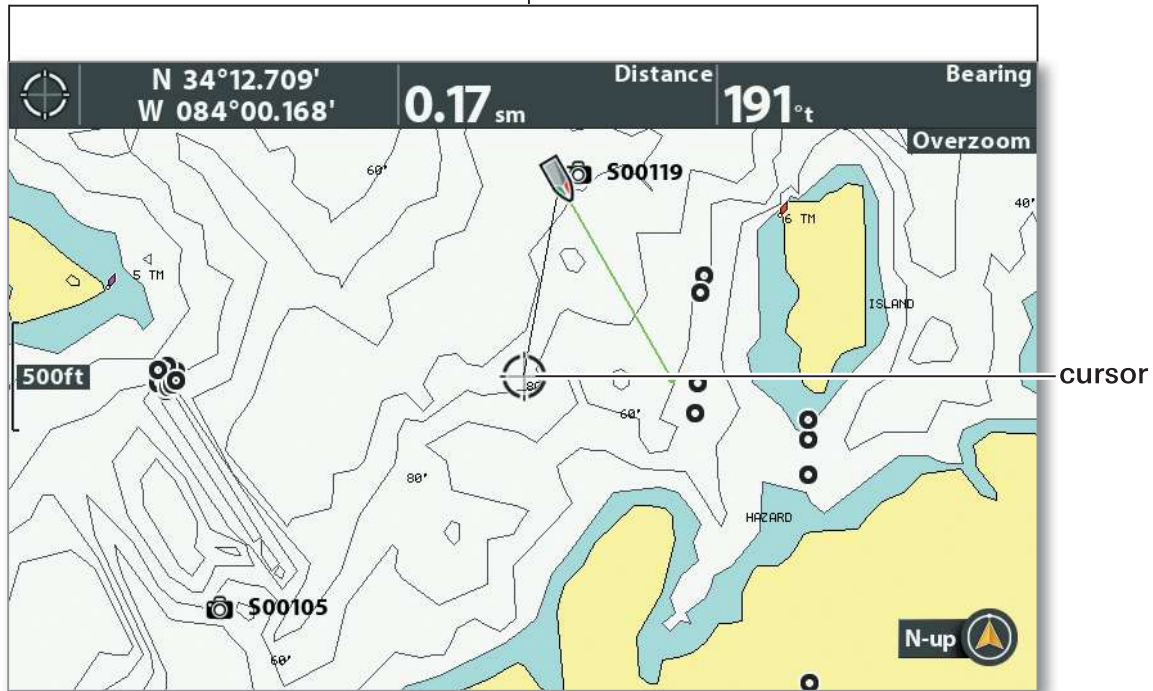
- **North-Up:** True North is shown at the top of the view. Objects located to the north of the boat are drawn above the boat.
- **Head-Up:** The boat's current heading points up, and the chart rotates around the boat icon so that it always points up on the view.
- **Course-Up:** During navigation, the projected course is shown at the top of the view. If not navigating, the last known projected course is shown.



# CHART on the Go ▶▶▶

## Chart View with Active Cursor

cursor digital readouts



Activate and Move the Cursor



Zoom In



Zoom Out



Mark a Waypoint



Start Navigation

## ▶ Mark a Man Overboard (MOB) Waypoint

Press and hold the GOTO/MOB key.

As soon as you know that you have a man overboard (MOB), activate MOB navigation to maximize the chances for a successful rescue. The MOB waypoint indicates the point at which your man went overboard and the relation of the boat to that point. See your control head operations manual for details about this feature.

Press and Hold

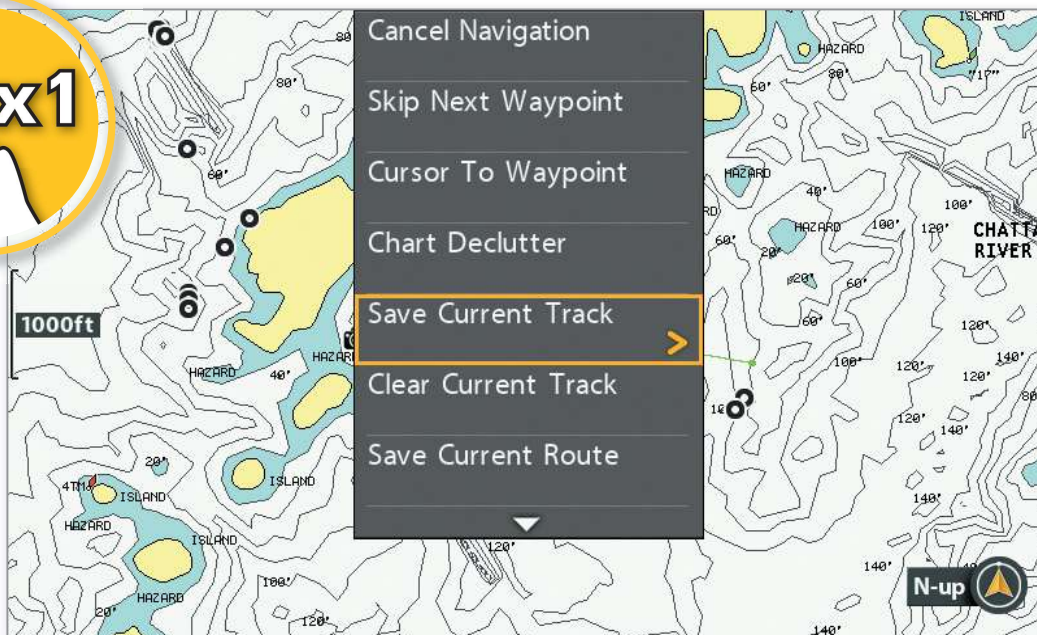


# CHART X-Press Menu

Open  
X-Press Menu



Chart X-Press Menu



Use the **Chart X-Press Menu** to save the current track and route, as well as cancel navigation.

## ▶ **Save the Current Track**

**Chart X-Press Menu > Save Current Track**

It is important to save the current track before powering off the control head.

## ▶ **Save the Current Route**

**Chart X-Press Menu > Save Current Route**

## ▶ **Cancel Navigation**

**Chart X-Press Menu > Cancel Navigation**

## ▶ **Clear the Current Track**

**Chart X-Press Menu > Clear Current Track**

# Waypoint Management Dialog Box

Route, track, and waypoint names, as well as other details, can be edited from the Waypoint Management dialog box. See your control head operations manual for more information.

Open the Waypoint Management Dialog Box:  
**Main Menu > Nav tab > Waypoints, Routes, Tracks**

Waypoint Management Dialog Box



## ▶ Edit a Waypoint

**Select a Saved Waypoint**

**Select Edit > Waypoint Name (WP#), Icon, Visibility, etc.**

**Waypoint Name:** Use the Cursor Control key to set the fields in the dialog box. Press the CHECK/INFO key to save.

## ▶ Create a New Waypoint

**Options > New > New Waypoint**

Use the Cursor Control key to set the fields in the dialog box.

## ▶ Start Navigation on a Saved Route

**Select a Saved Route**

**Select Travel > Forward OR Travel > Reverse**


## ▶ Edit the Track Name

**Select a Saved Track > Edit**

Use the Cursor Control key to set the fields in the dialog box.

# MANAGE your Humminbird

---

 **WARNING!** Humminbird is not responsible for the loss of data files (waypoints, routes, tracks, groups, snapshots, recordings, etc.) that may occur due to direct or indirect damage to the unit's hardware or software. It is important to back up your control head's data files periodically. Data files should also be saved to your PC before restoring the unit's defaults or updating the software. See your control head operations manual.

## ▶ Register your Humminbird

Register your Humminbird product and sign up to receive the latest Humminbird news, including software updates and new product announcements.


- 1 Go to our Web site at **humminbird.com**, and click Support > Register Your Product.
- 2 Follow the on-screen instructions to register your Humminbird product.

## ▶ Use Manuals on your Device

Download Humminbird manuals to your mobile device or PC.

- 1 **Mobile:** Download the free Adobe Acrobat Reader app to your mobile device.  
**PC:** Download the free Adobe Acrobat Reader software from <http://get.adobe.com/reader/> to your PC, and install it on your PC.
- 2 Go to our Web site at **humminbird.com**, and click Support > Manuals.
- 3 Select the PDF for your control head model or accessory, and save it to your device.
- 4 **Mobile:** Open the Adobe Acrobat Reader app. Open the Humminbird manual.  
**PC:** Open Adobe Acrobat Reader. Open the Humminbird manual.

## ▶ Manage Navigation Data

 **WARNING!** DO NOT import navigation data from unknown sources into your Humminbird unit without first converting the data to the correct format using HumminbirdPC. Importing corrupted data can cause the unit to malfunction, which can result in lost navigation data.

- **Import and export navigation data on the control head** using an SD or microSD card. See your control head operations manual for complete details.

- **Use HumminbirdPC** to organize your waypoints, routes, tracks, and groups on your personal computer. Visit our Web site at [humminbird.com](http://humminbird.com) to download the latest version of HumminbirdPC.

## ▶ **Conserve Power Used by the Control Head**

- 1** Press the POWER/LIGHT key.
- 2 Start Standby Mode:** Select Standby. Press the RIGHT Cursor key.  
**Dim the Backlight:** Select Light. Press the LEFT Cursor key repeatedly.
- 3 Turn off Standby Mode:** Press the POWER key.

## ▶ **Update the Control Head Software** (with an SD or microSD card)

For complete details about the software update process, see your control head operations manual.

- 1** Insert a formatted SD card (or microSD card with adapter) into the slot on your PC.
- 2** Go to our Web site at [humminbird.com](http://humminbird.com) and click Support > Software Updates.
- 3 To update your control head software,** click the series name for your control head model (HELIX, SOLIX, etc.) under Fish Finders.  
**To update accessory software,** click the product name under Accessories & Mapping.
- 4** Select your model number or product name.
- 5** Read the software description, requirements, and the instructions fully before proceeding with the software update.
- 6** Click **Download**.
- 7** Follow the on-screen prompts to save the software file to the SD or microSD card.
- 8** Power on the control head.
- 9** Install the SD or microSD card with the software file into the control head card slot. The control head will recognize the new software and run through a series of prompts to confirm the software installation.

# Notes ▶▶▶

# Contact Humminbird Technical Support

---

Contact Humminbird Technical Support in any of the following ways:

▶ Toll Free: **(800) 633-1468**  
International: **(334) 687-6613**  
E-mail: **service@humminbird.com**

▶ Shipping: **Humminbird**  
**Service Department**  
**678 Humminbird Lane**  
**Eufaula, AL 36027 USA**

---

Our Web site, **humminbird.com**, offers in-depth information about all things Humminbird, along with technical support, product manuals, software updates, and a robust FAQ section.

For more great content, visit:



Facebook.com/HumminbirdElectronics



Twitter.com (@humminbirdfish)



Instagram.com/humminbirdfishing



YouTube.com/humminbirdtv